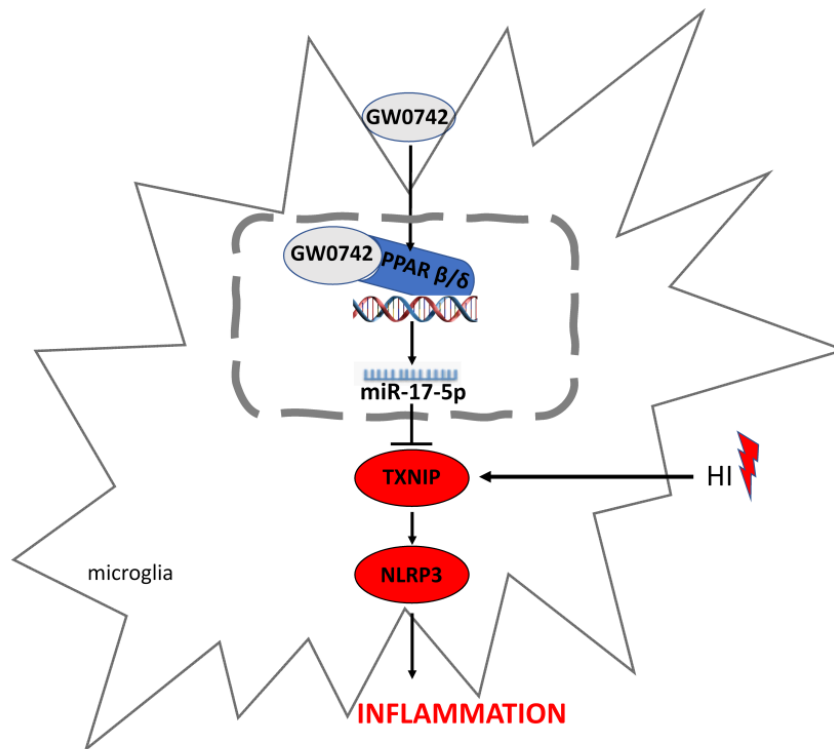
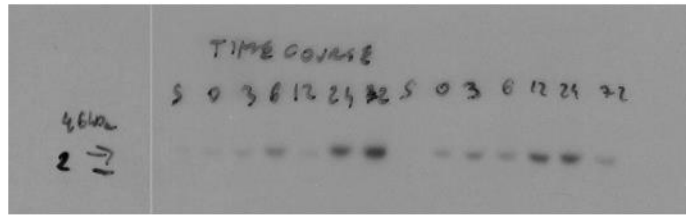


## Supplementary information

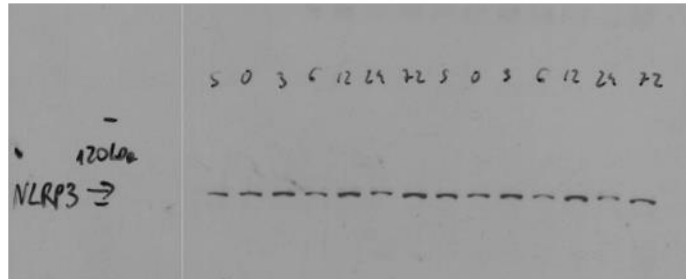


SUPPLEMENTARY FIGURE 1. Illustration of proposed mechanism.

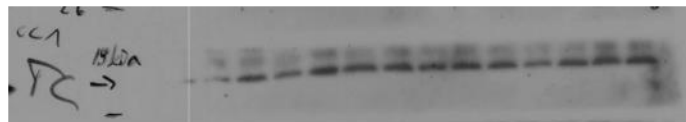
TXNIP  
46 kDa



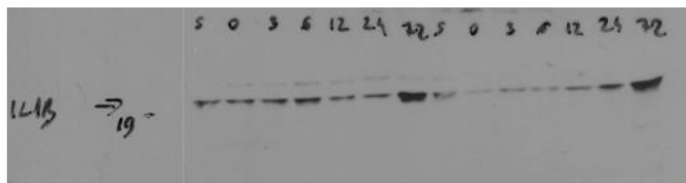
NLRP3  
120 kDa



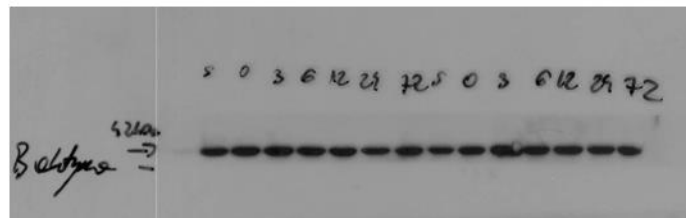
Cleaved  
caspase-1  
20 kDa



IL-1 $\beta$   
20 kDa

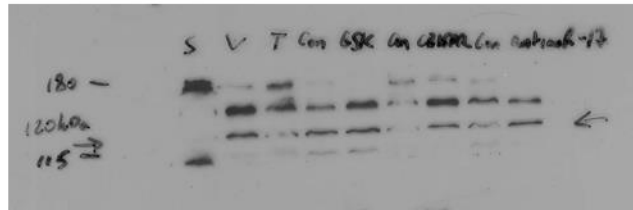


$\beta$ -actin  
42 kDa

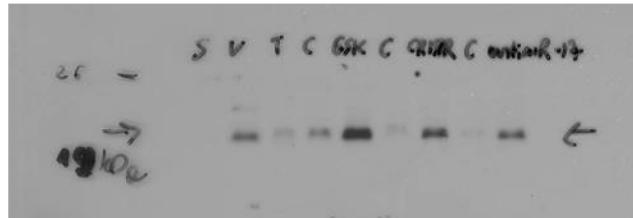


SUPPLEMENTARY FIGURE 2. Western blot membranes for time-course experiment shown in Fig.1.

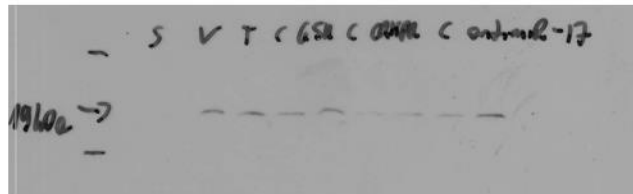
NLRP3  
120 kDa



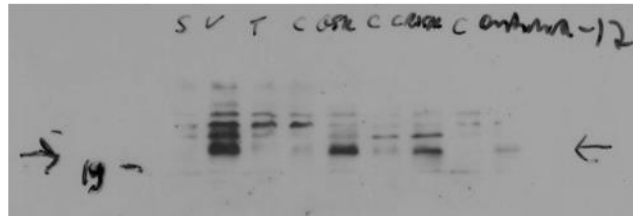
Cleaved  
caspase-1  
20 kDa



IL-1 $\beta$   
20 kDa



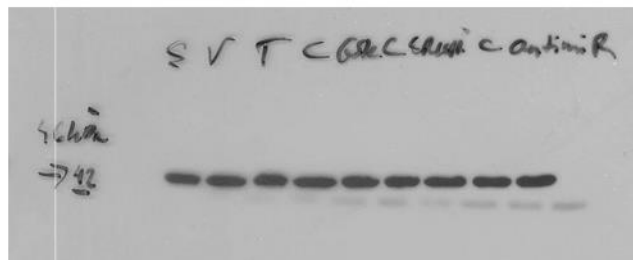
TNF- $\alpha$   
26 kDa



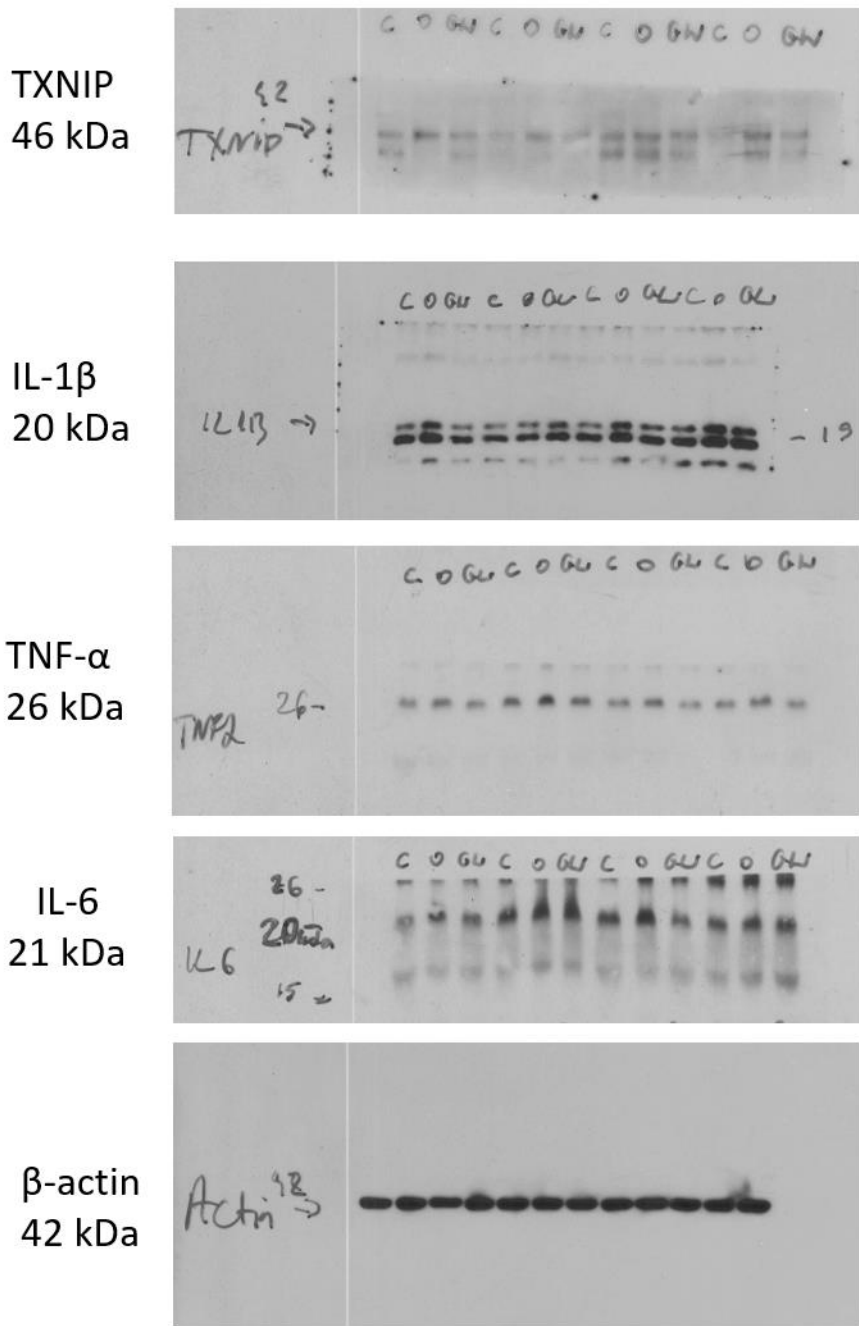
IL-6  
21 kDa



$\beta$ -actin  
42 kDa



SUPPLEMENTARY FIGURE 3. Western blot membranes for mechanism study experiment shown in Fig.5.



SUPPLEMENTARY FIGURE 4. Western blot membranes for PC12 cell culture experiment shown in figure 6.