

Supporting Information

Microstructural deformation observed by Mueller Polarimetry during traction assay on myocardium samples

Nicole Tueni^{1,2,+}, Jérémy Vizet^{3,+}, Martin Genet^{1,2}, Angelo Pierangelo³, Jean-Marc Allain^{1,2,}*

*Corresponding Author: angelo.pierangelo@polytechnique.edu ;

jean-marc.allain@polytechnique.edu

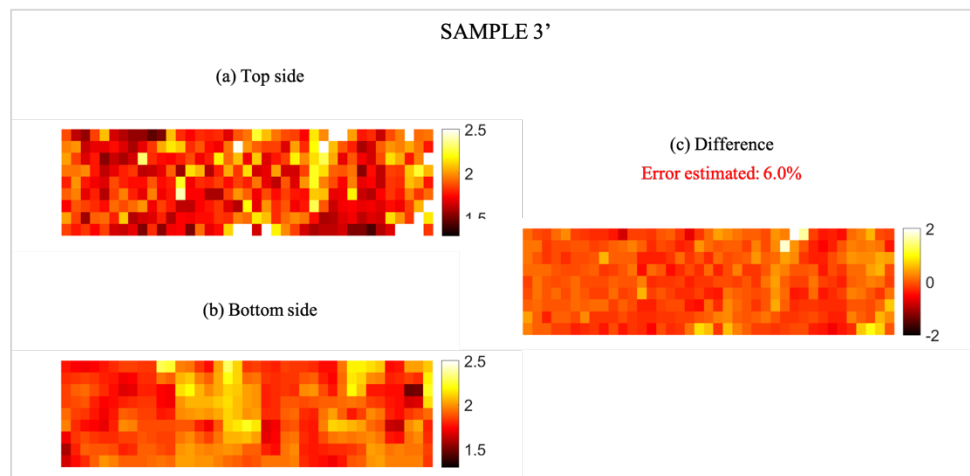
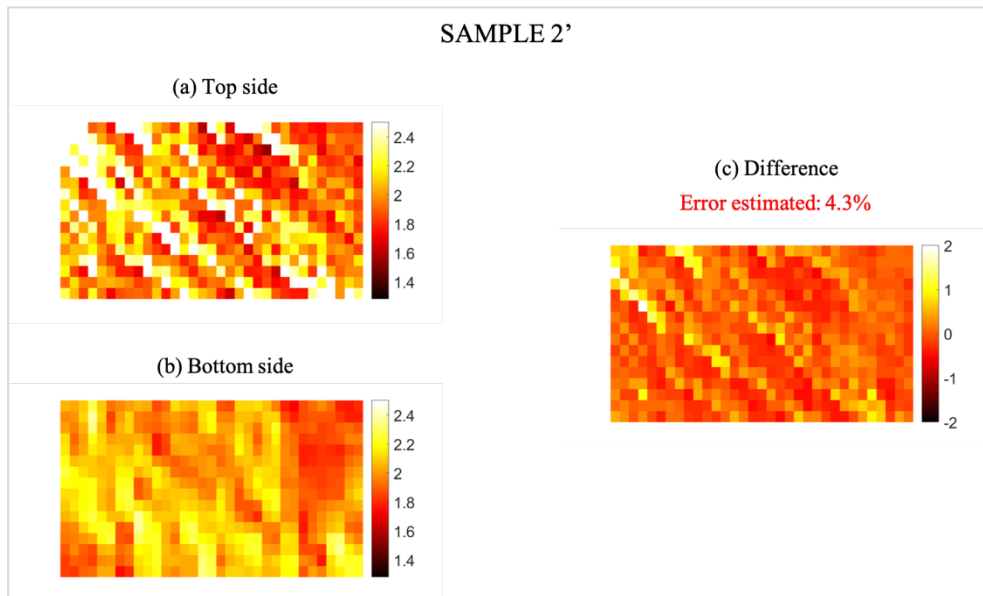
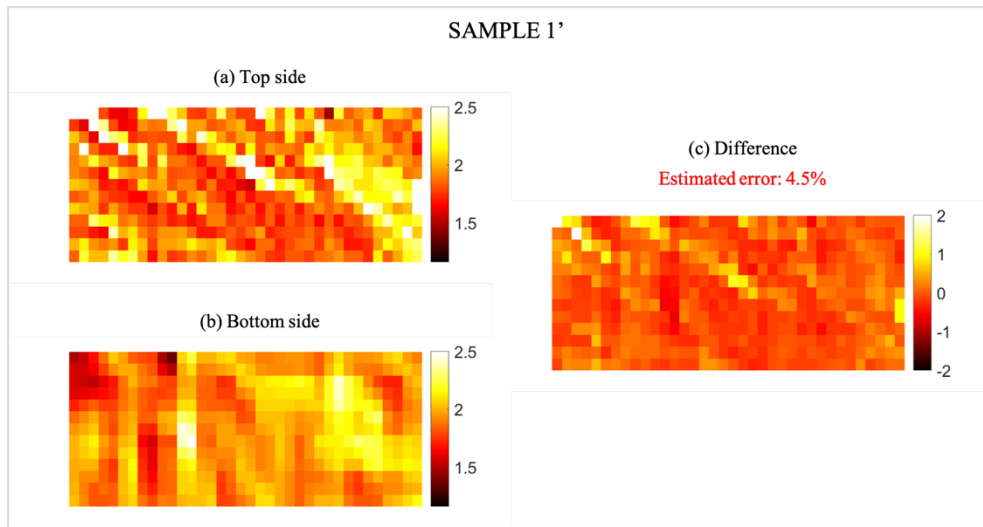
+These authors contributed equally to this work.

¹ LMS, CNRS, École Polytechnique, Institut Polytechnique de Paris, Palaiseau, France

² Inria, Palaiseau, France

³ LPICM, CNRS, École Polytechnique, Institut Polytechnique de Paris, Palaiseau, France

Supplementary figure 1:



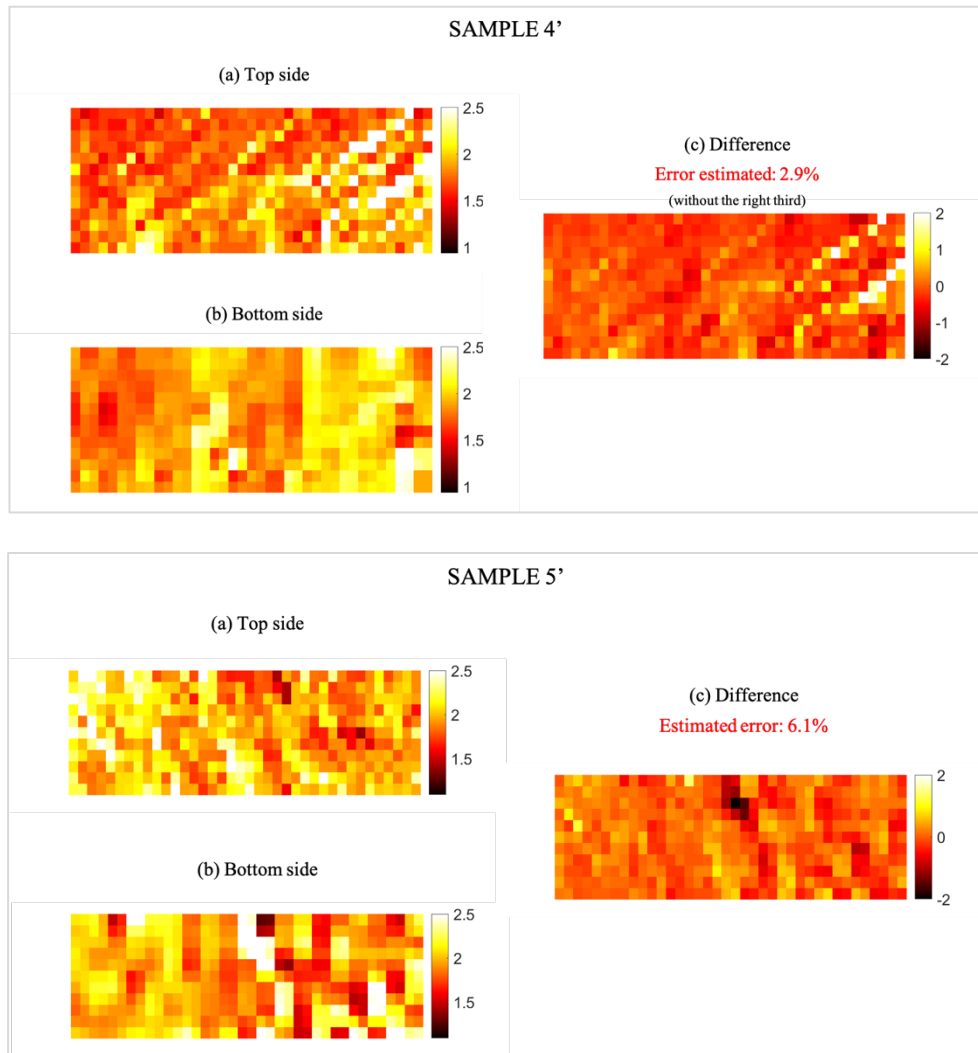
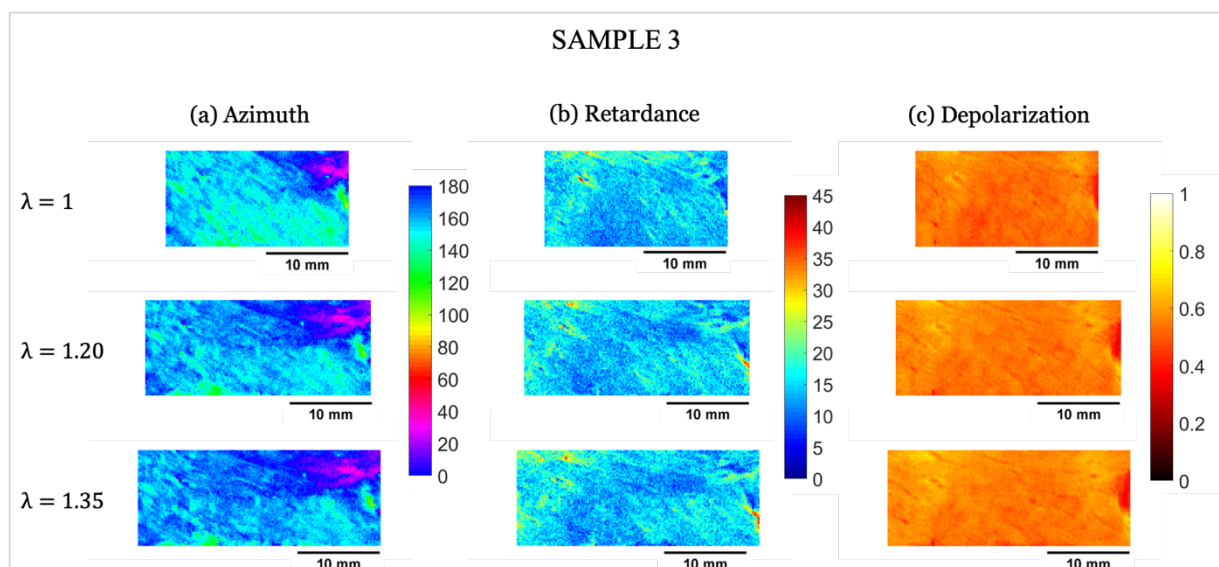
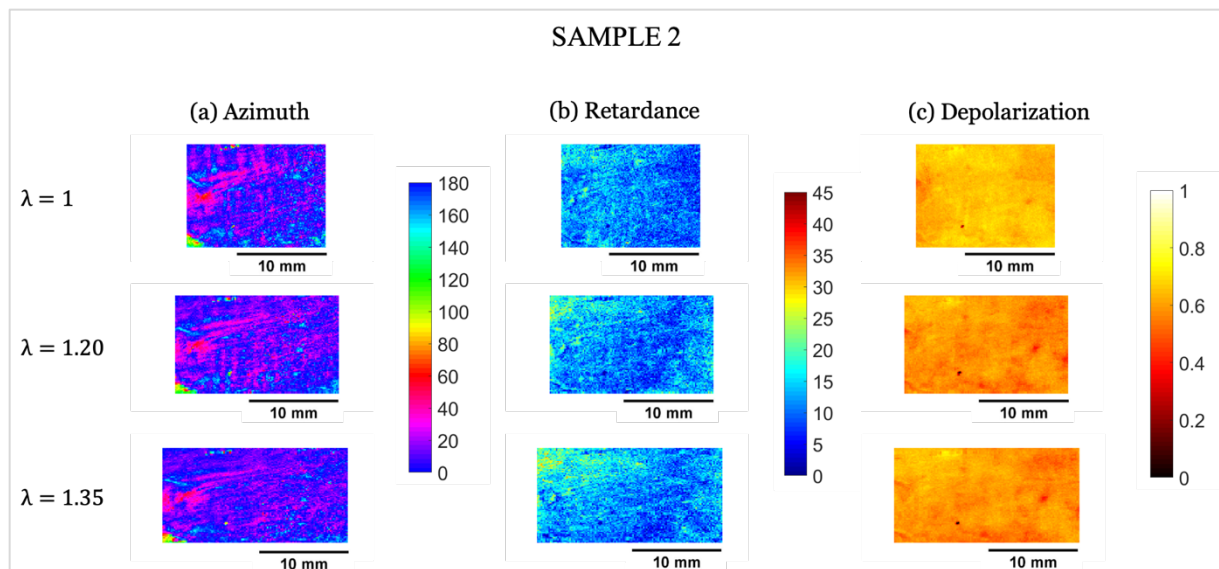
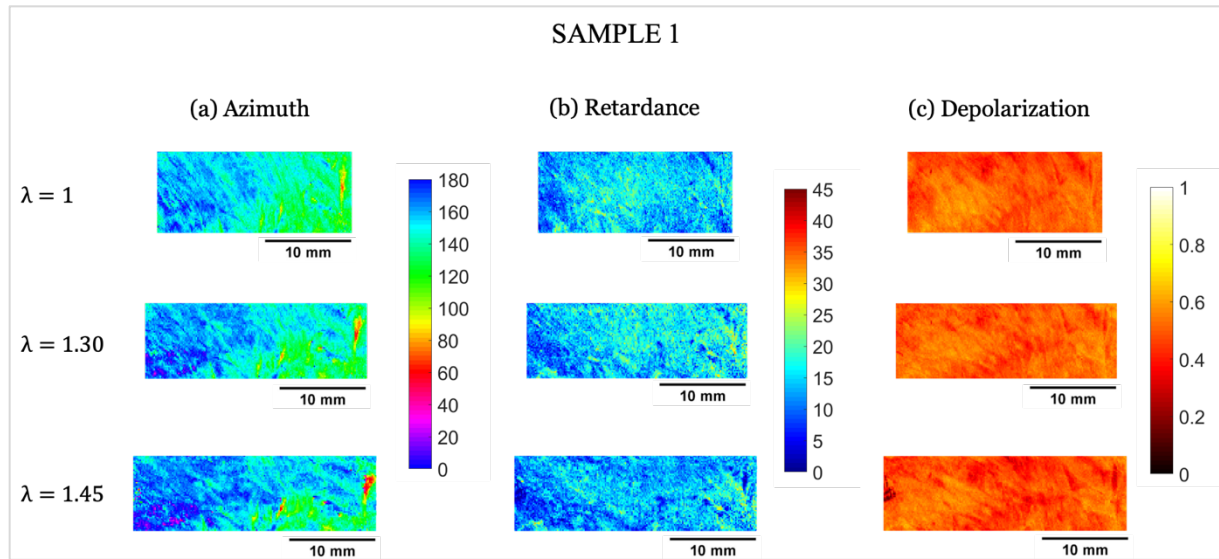
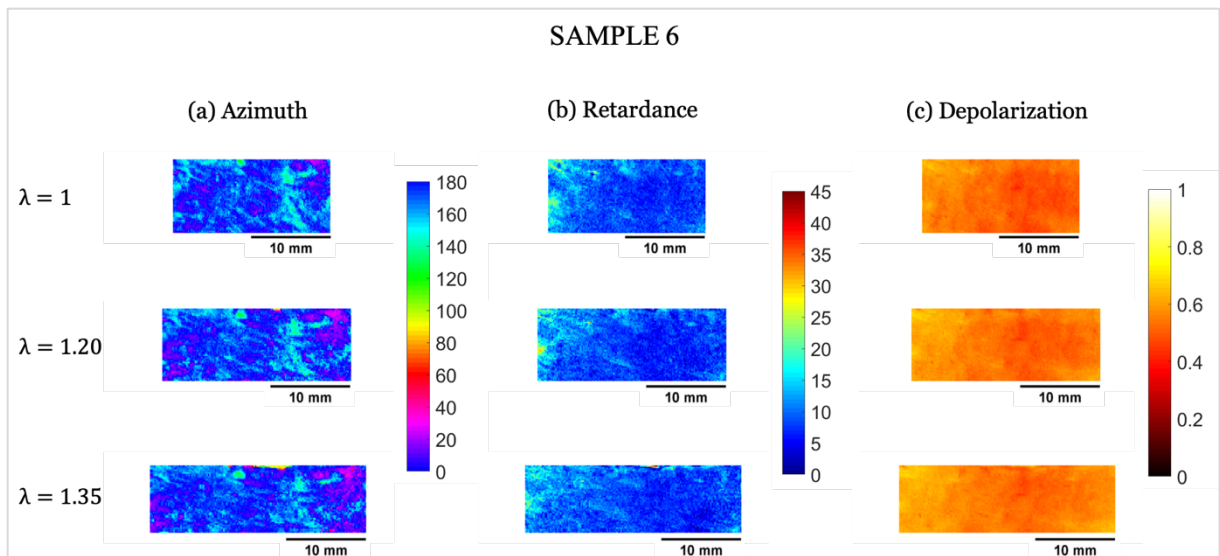
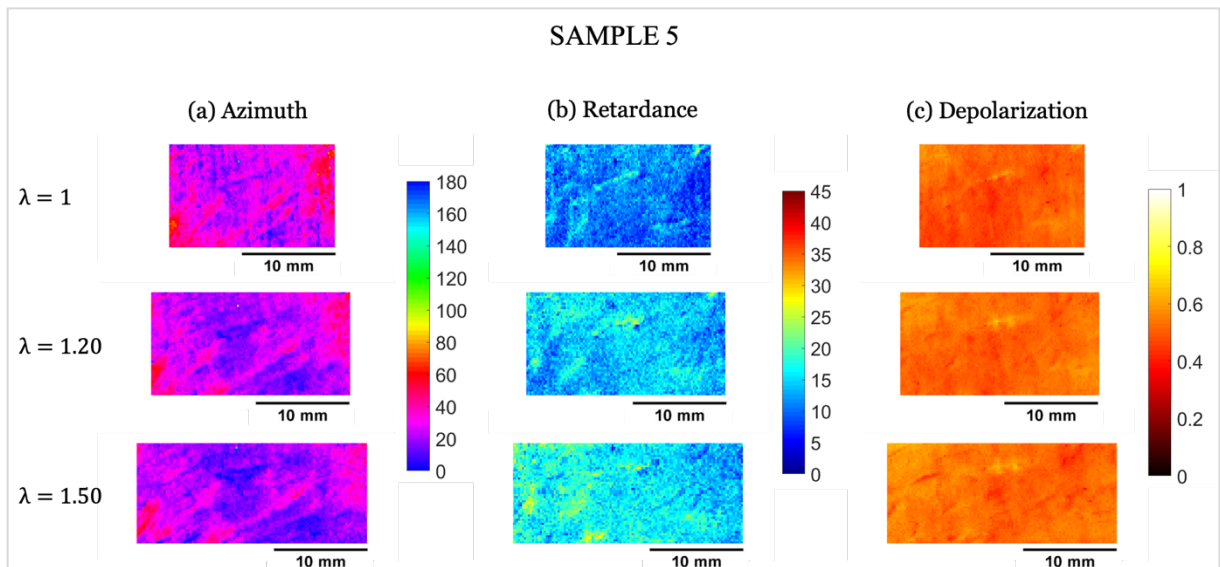
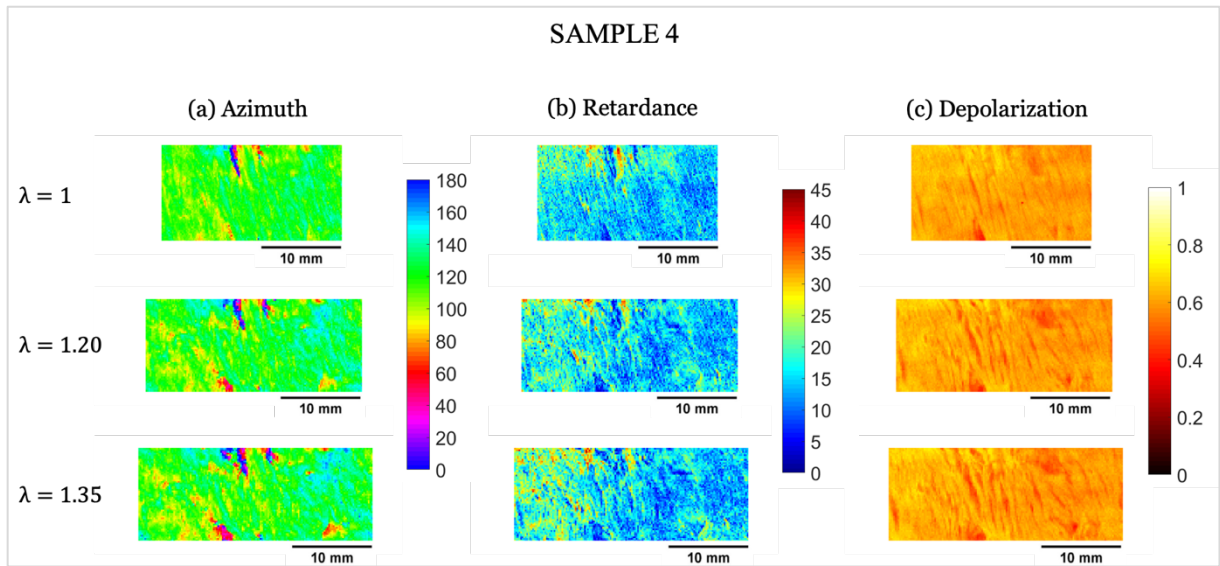


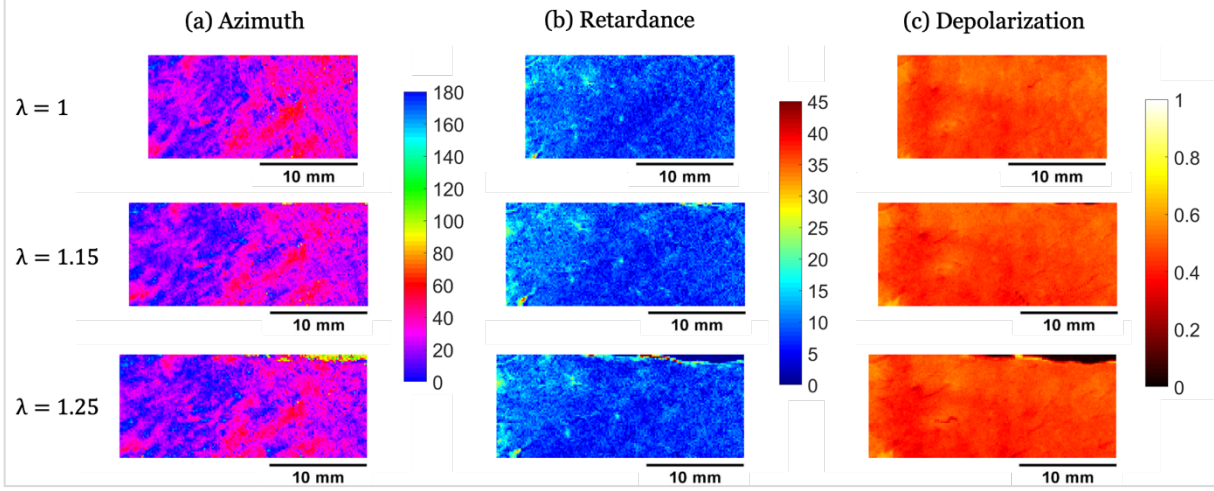
Figure S1. Comparison of the stretch measured by DIC on both sides of the same sample. (a) top and (b) bottom measures of each sample. (c) Difference $C_{top} - C_{bottom}$ of the two measures, as well as the estimation of error on the stretch based on the standard deviation of this difference.

Supplementary figure 2:

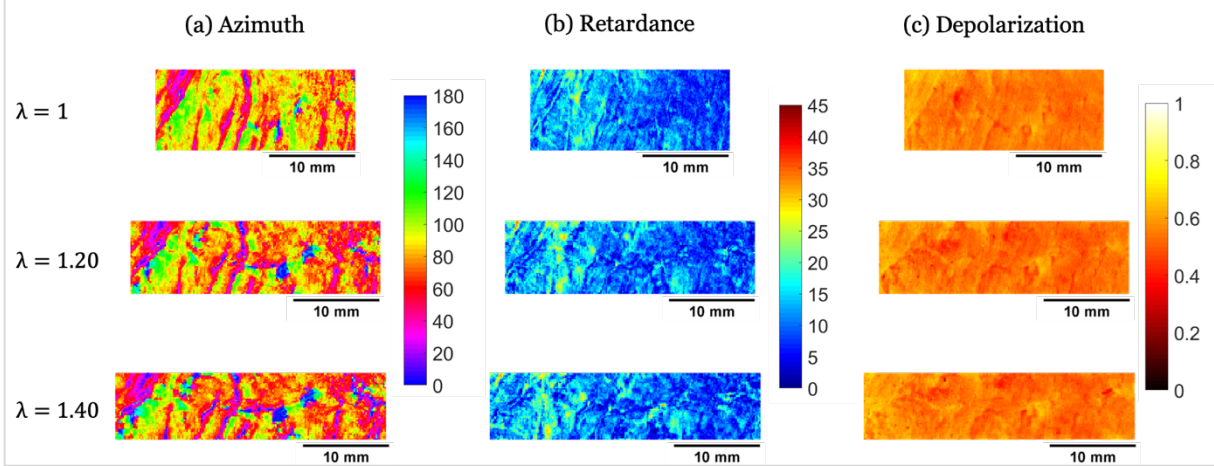




SAMPLE 7



SAMPLE 8



SAMPLE 9

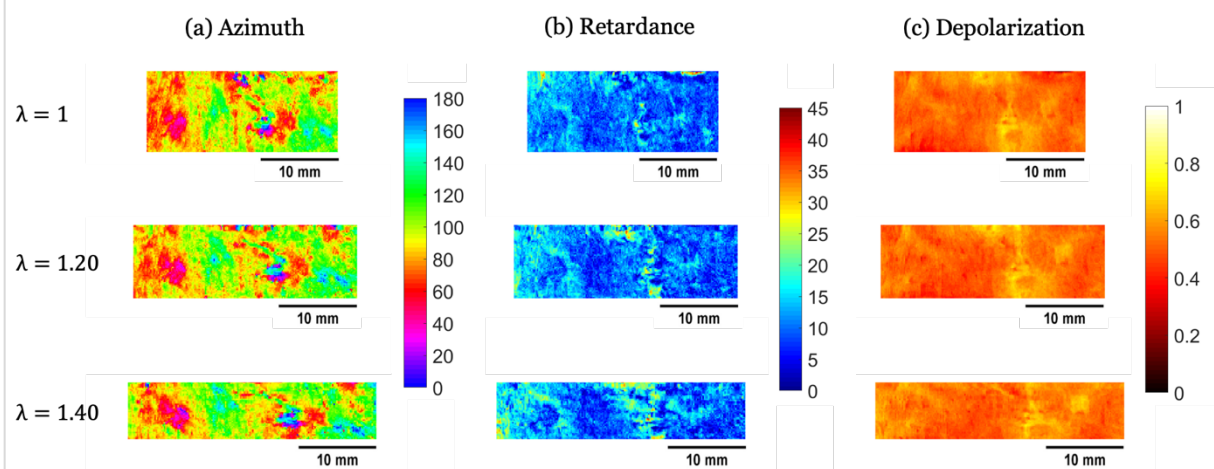
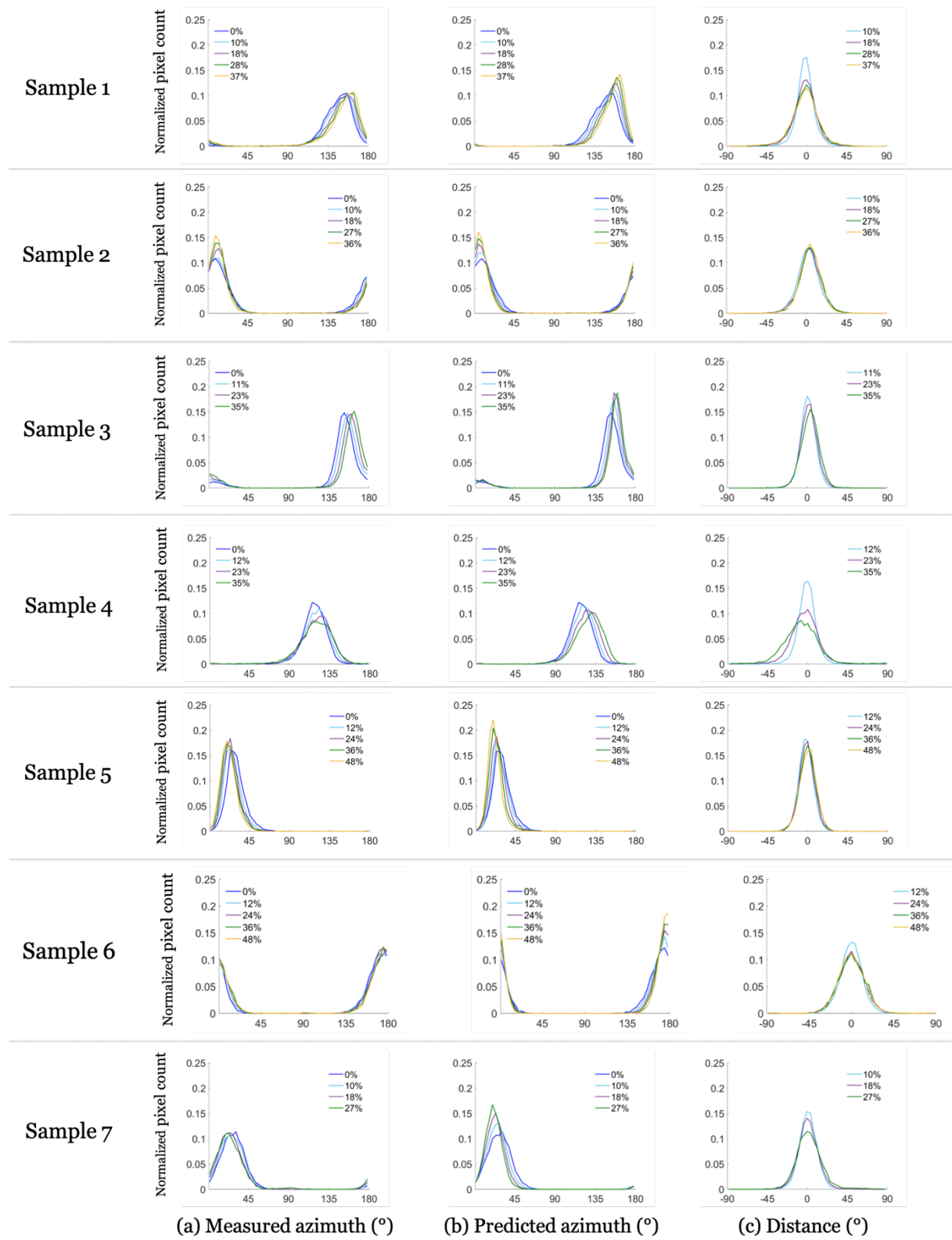


Figure S2. Maps of the Mueller polarimetry parameters (a - Azimuth (in $^{\circ}$), b - Retardance (in $^{\circ}$), c - Depolarization) measured at the different imposed stretches (indicated on the left), for all the samples.

Supplementary figure 3:



(a) Measured azimuth (°)

(b) Predicted azimuth (°)

(c) Distance (°)

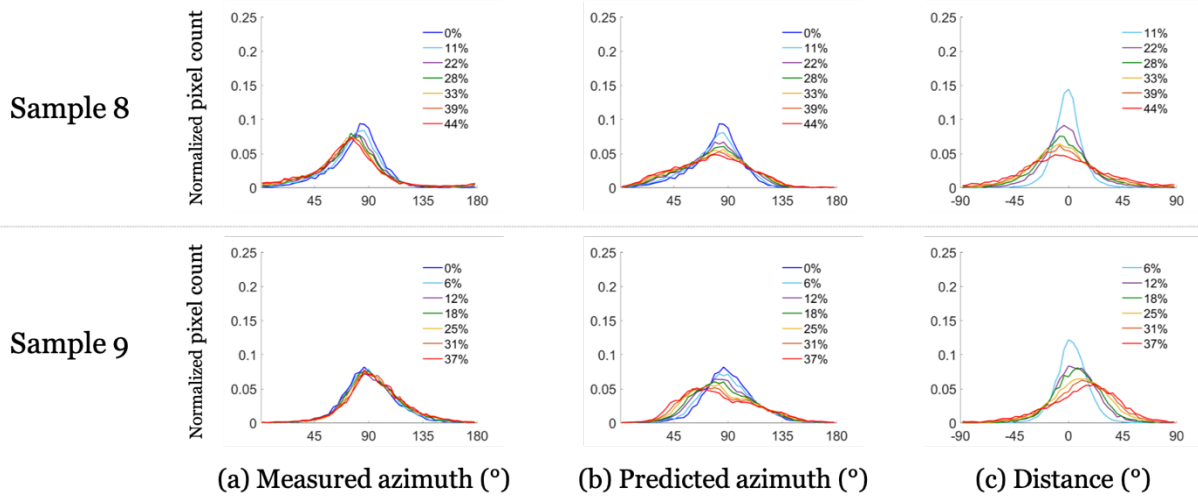


Figure S3. Histogram of the polarimetric parameters at different stretch level for each sample. a - Measured azimuth, b - Predicted azimuth, and c - Angular difference between measured and predicted azimuth distributions for each sample. The predicted distributions are obtained using the affine assumption.