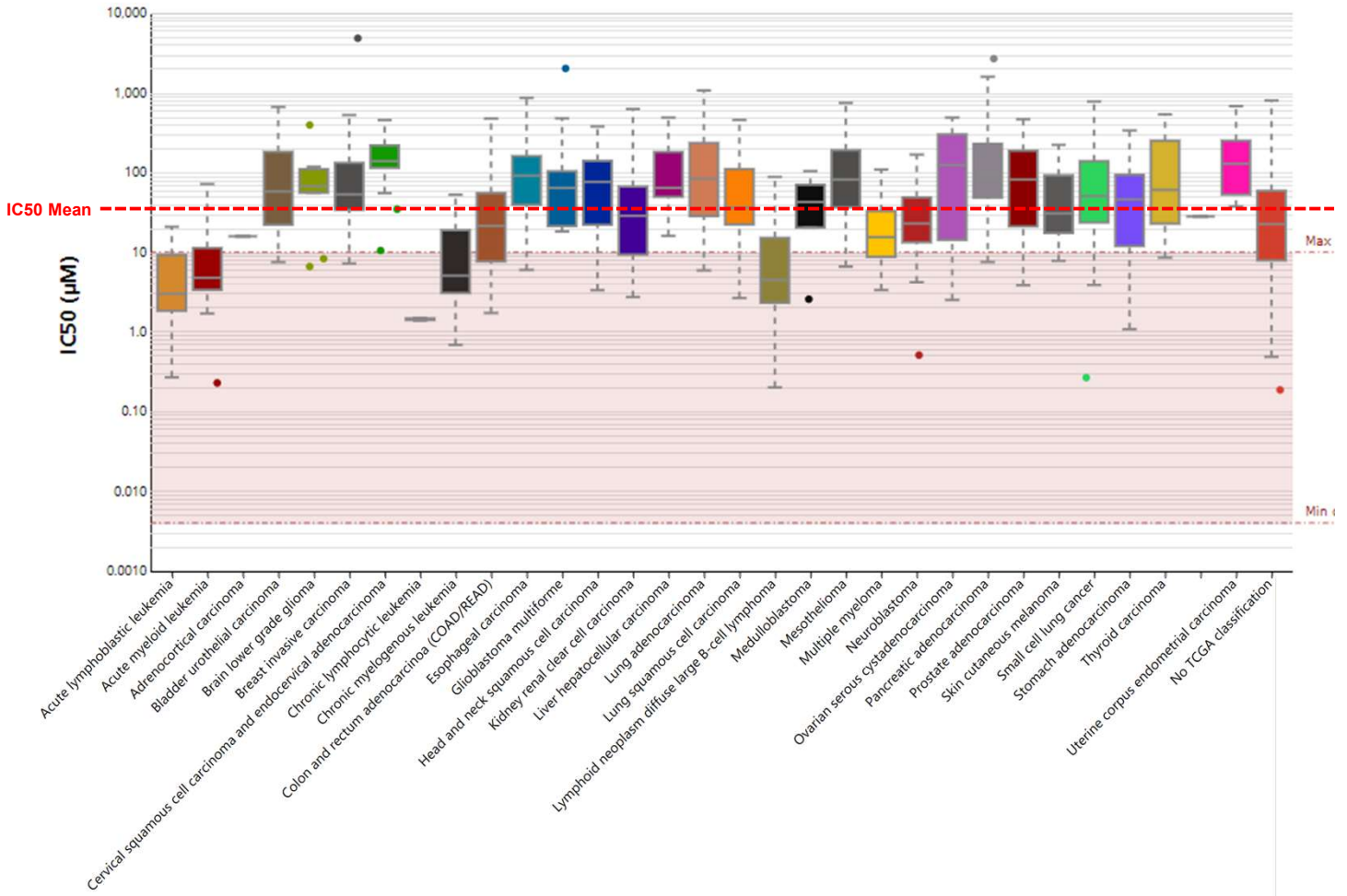


Supplementary Figure S1

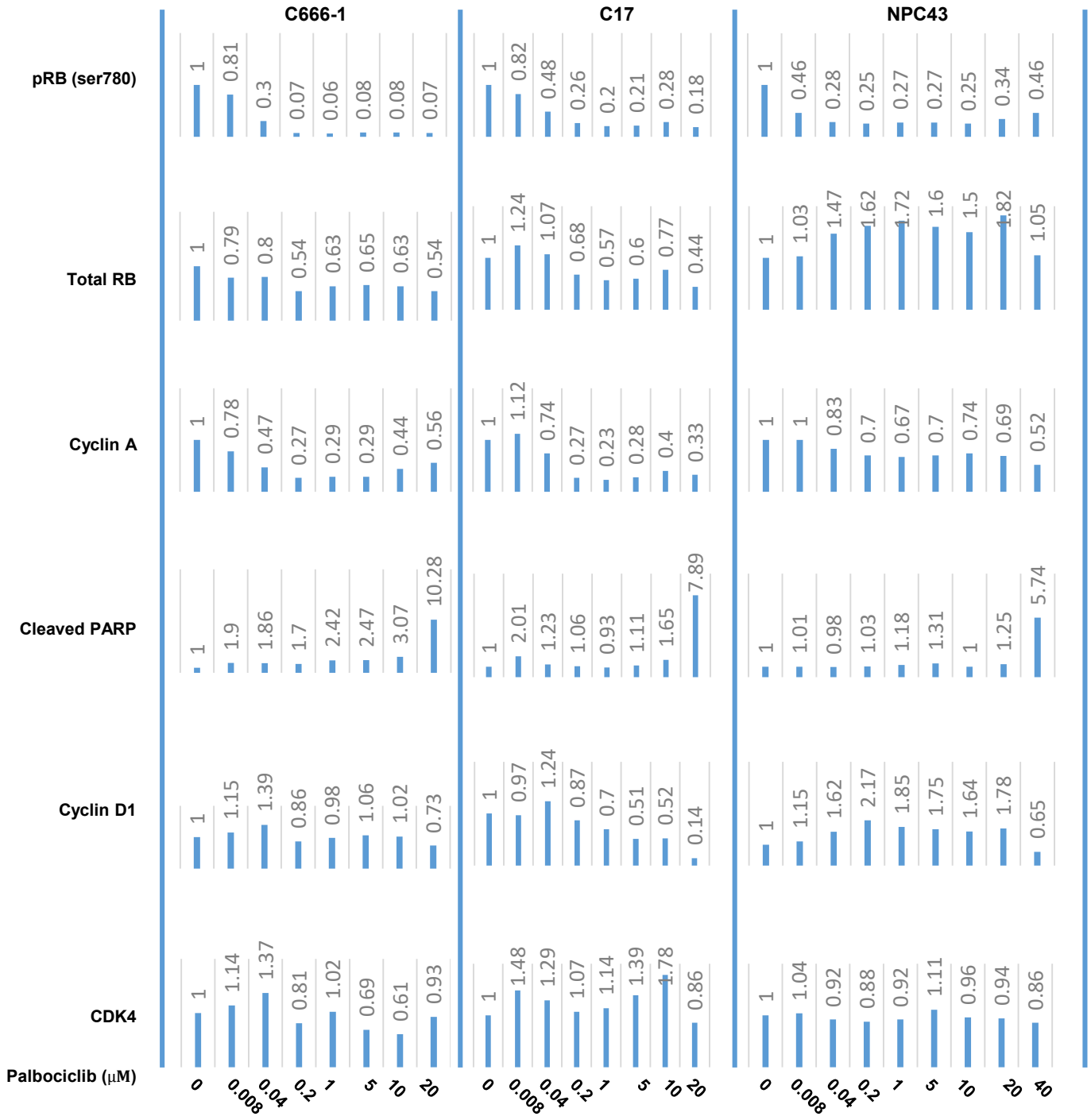
A

IC50 of palbociclib in different types of cancer

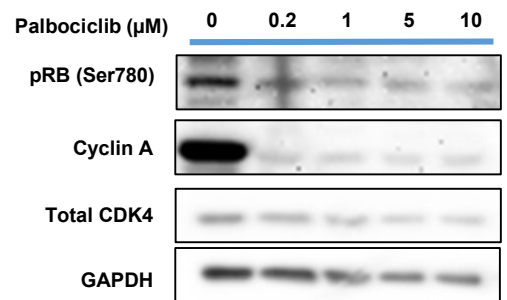
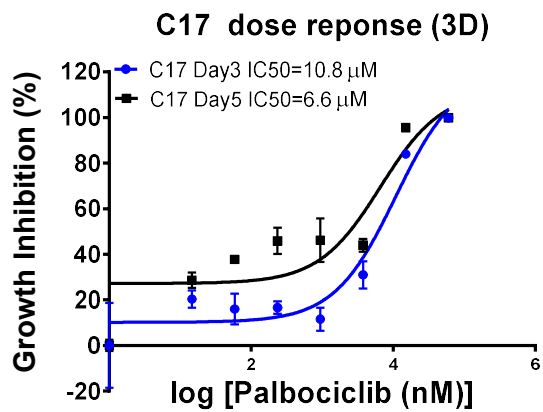
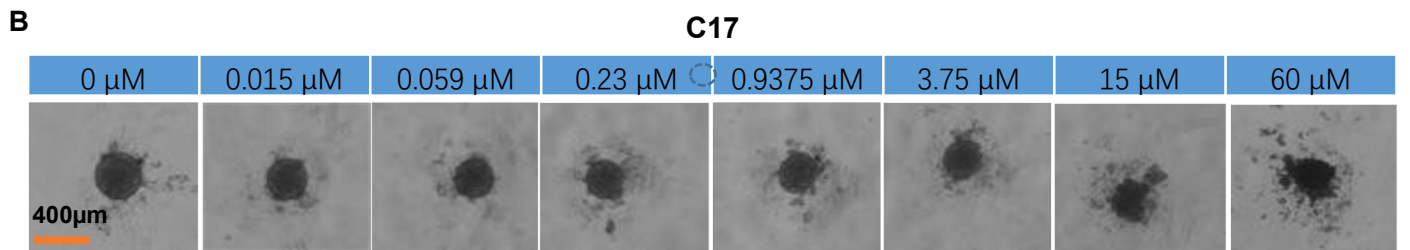
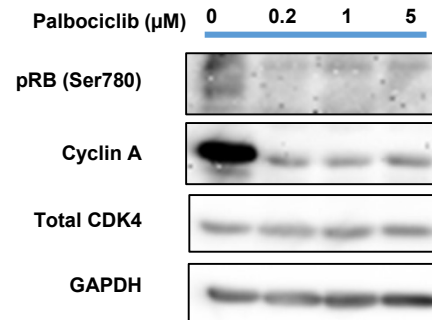
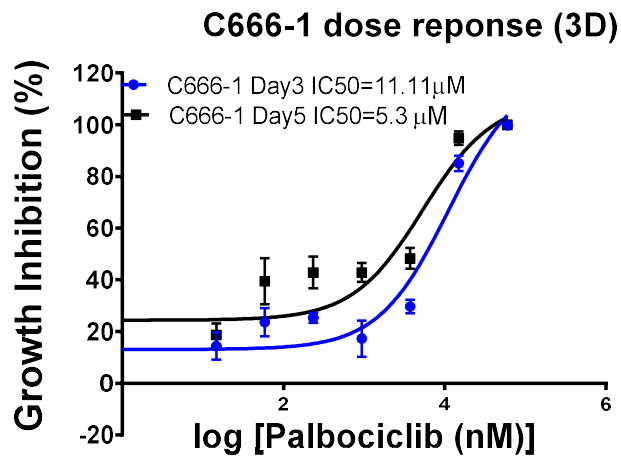
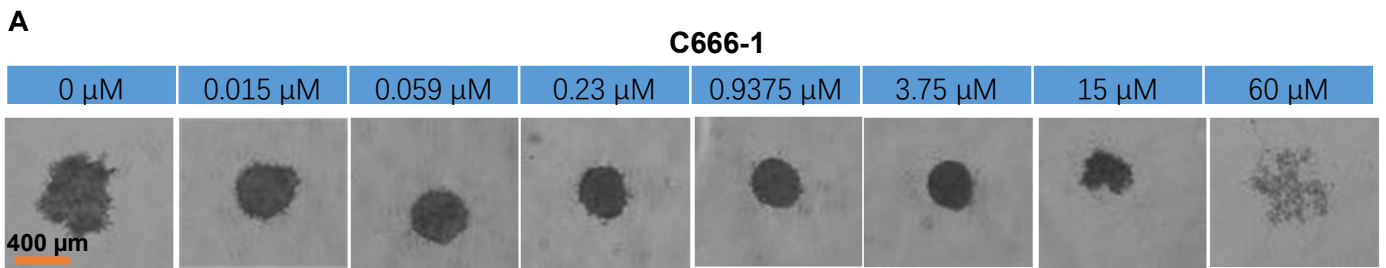


	PAN cancer	Head and Neck Cancer	Nasopharyngeal Carcinoma		
Cell Line	770 cell line	26 cell line	C666-1	C17	NPC43
IC50 (µM) (Day3)	35.7	49.2	22.36	20.23	24.63

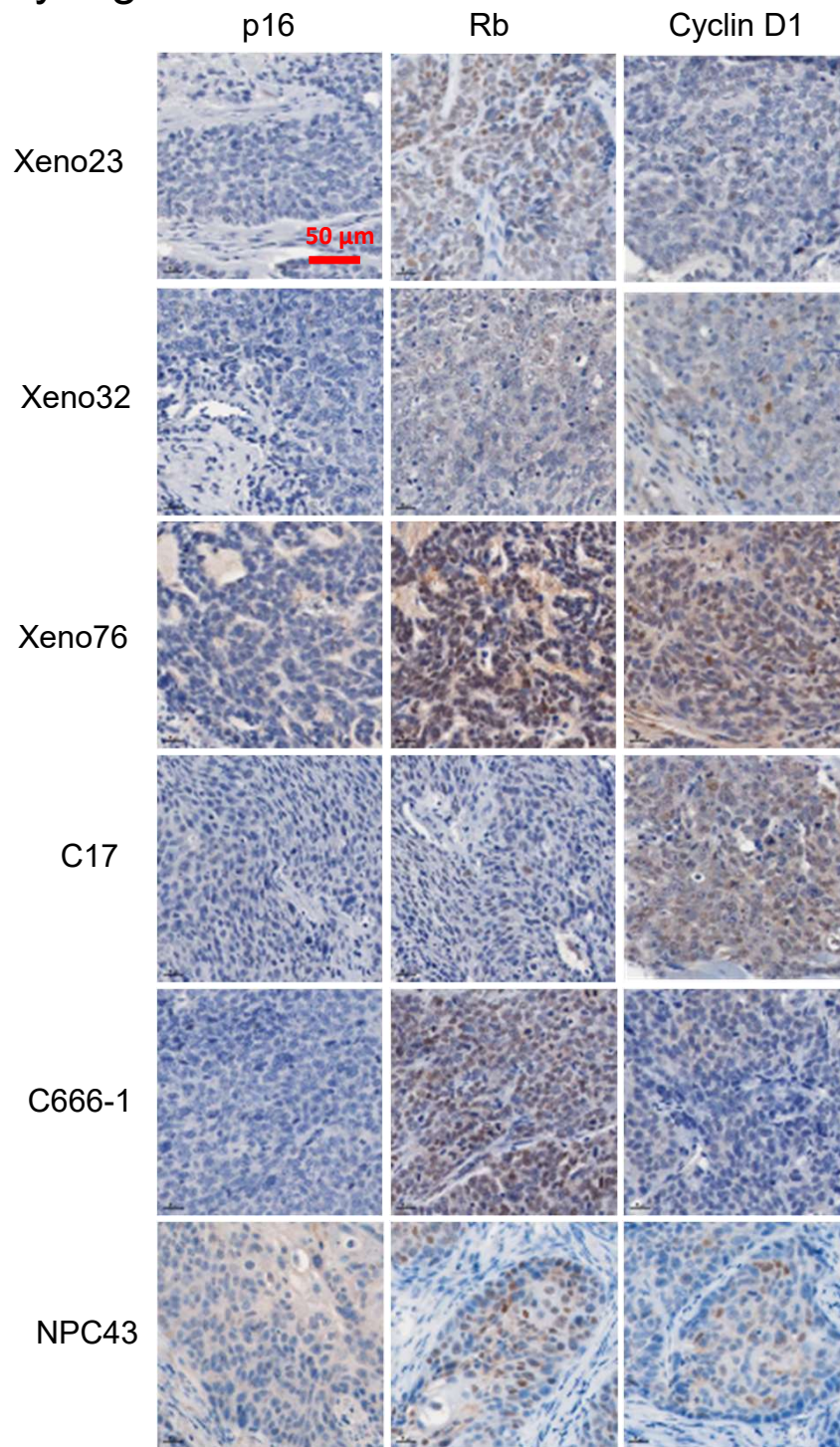
Supplementary Figure S2



Supplementary Figure S3

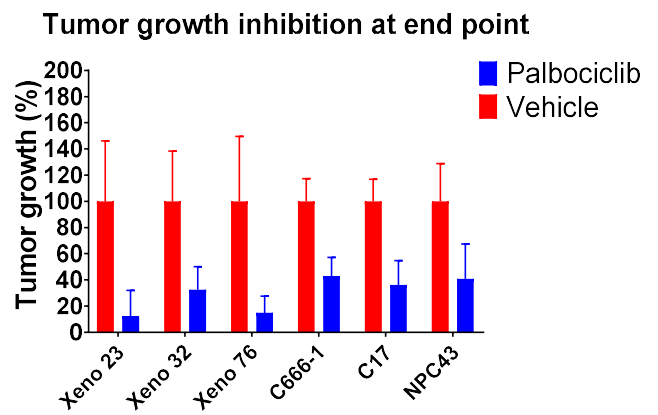
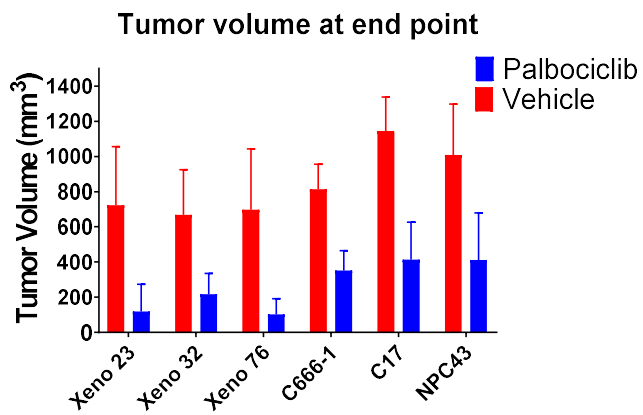
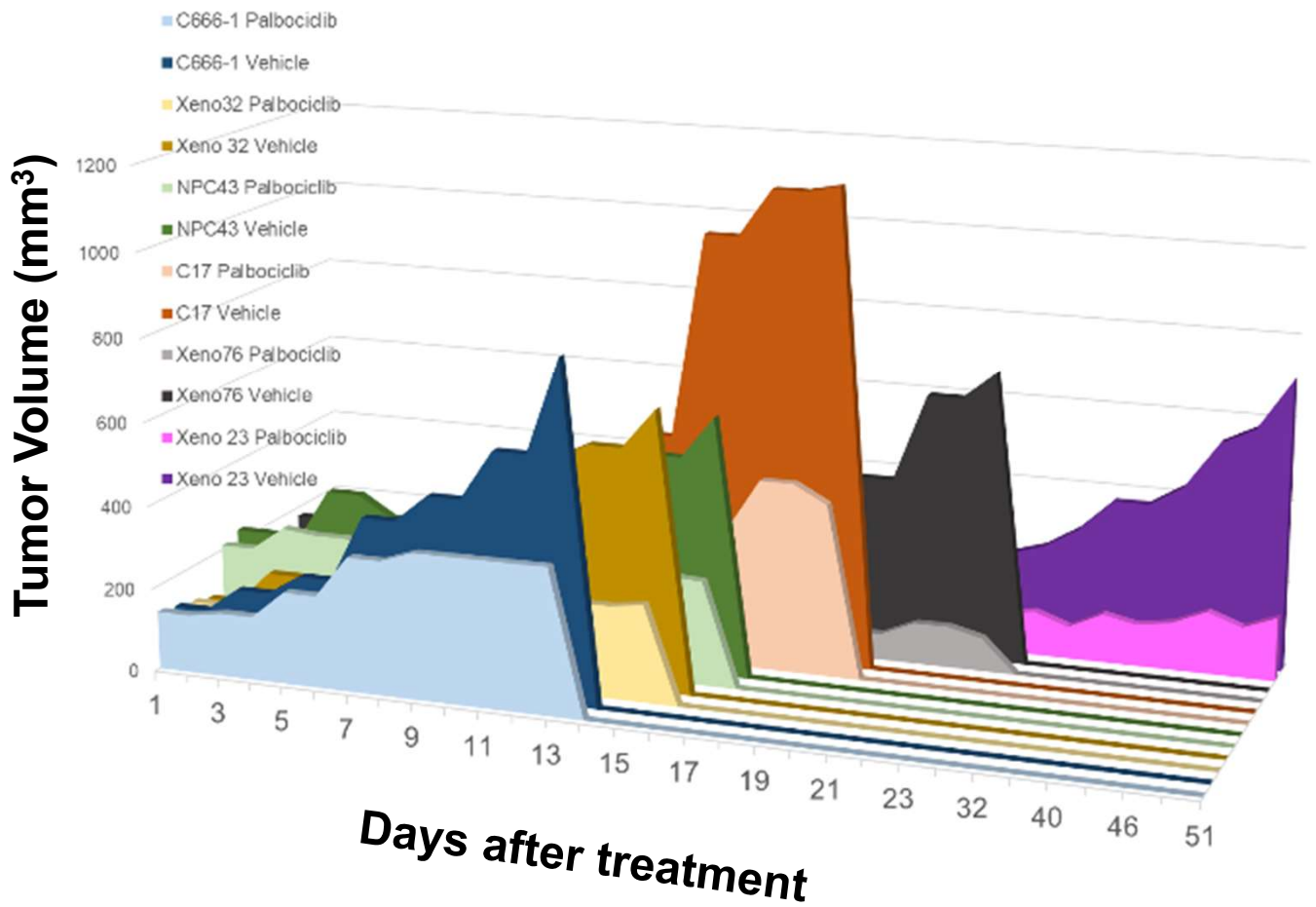


Supplementary Figure S4

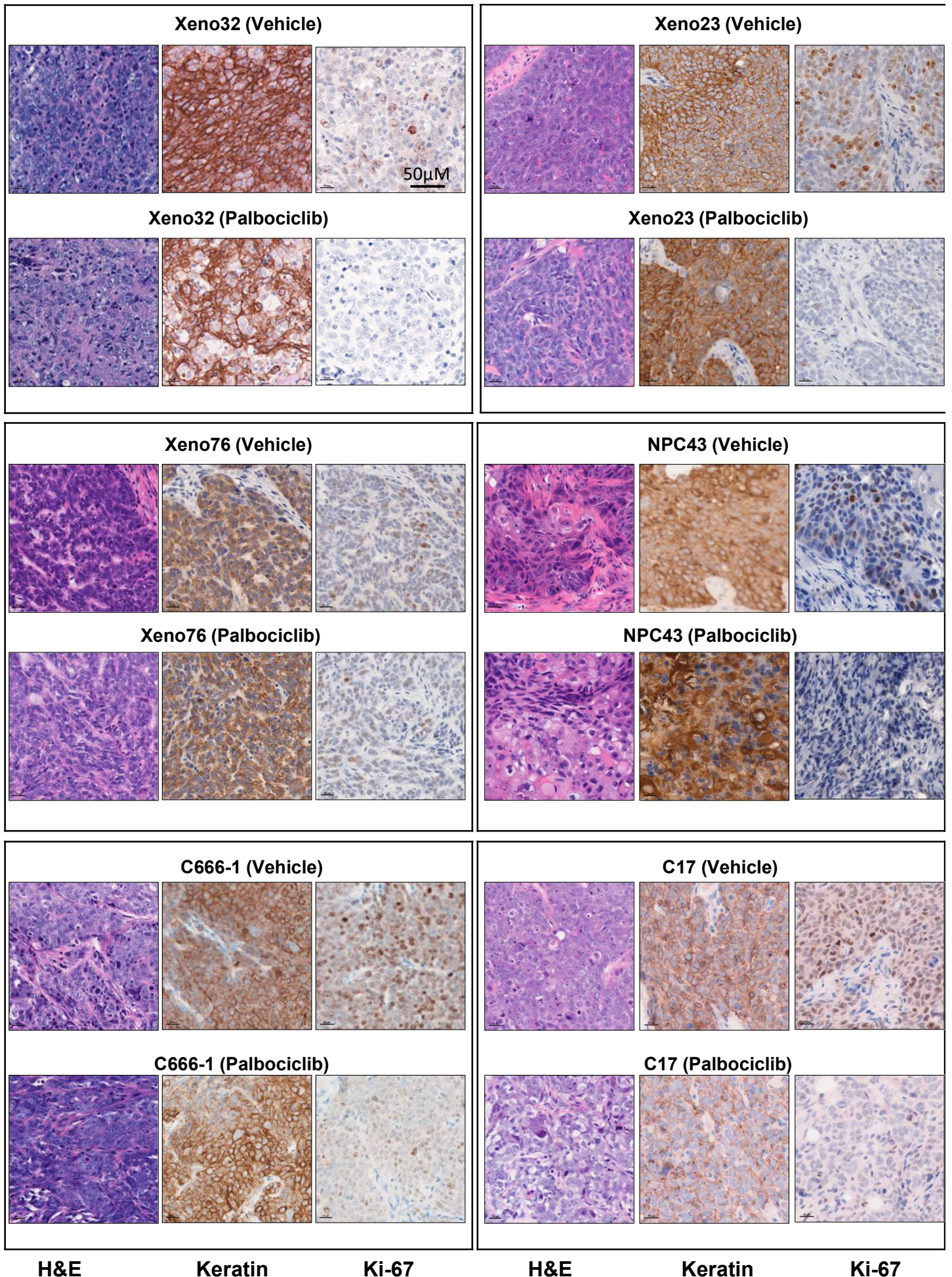


	p16	Rb	Cyclin D1
Xeno23	—	++	+
Xeno32	—	+	+
Xeno76	—	+++	+++
C17	—	+	+++
C666-1	—	+++	+
NPC43	—	++	++

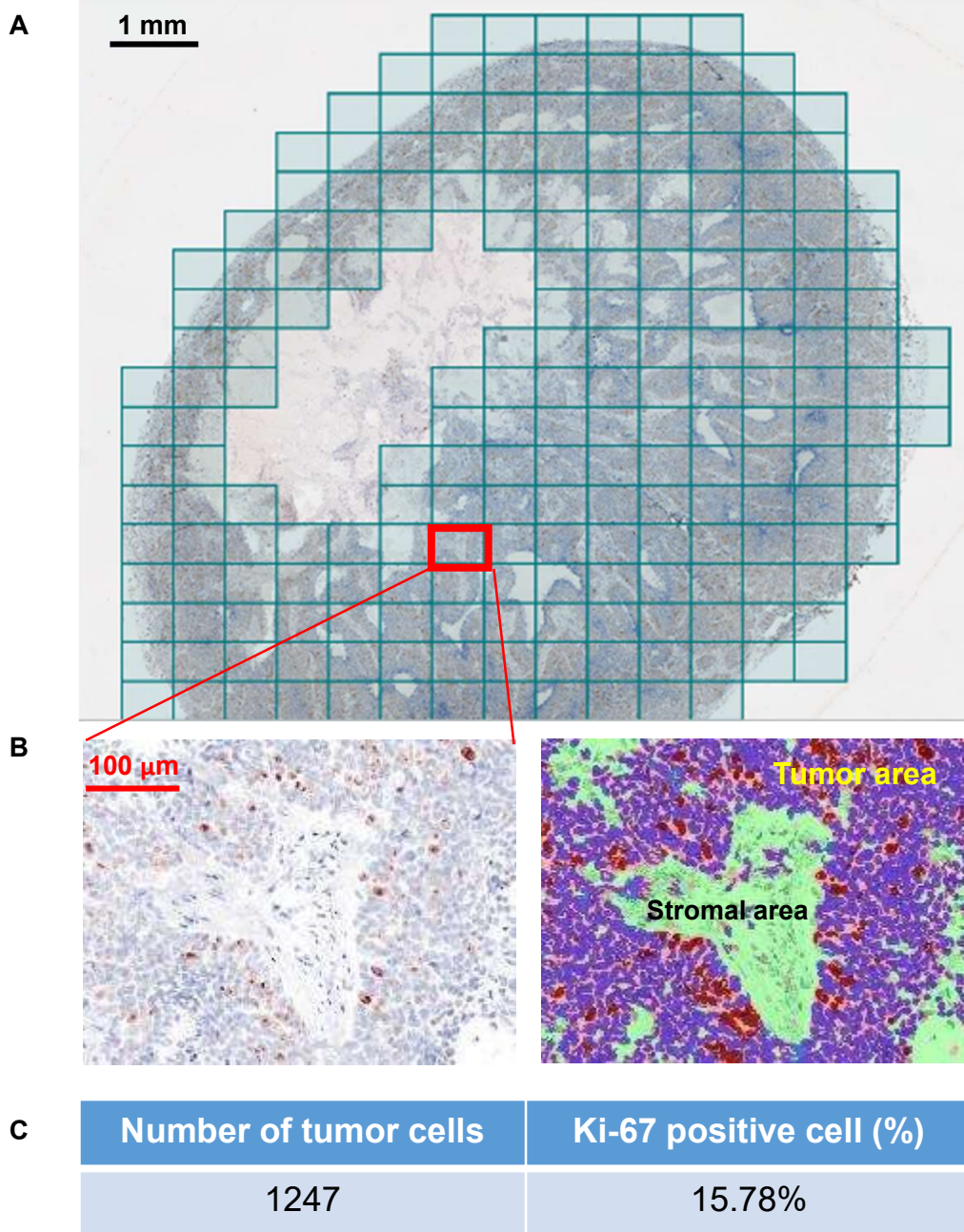
Supplementary Figure S5



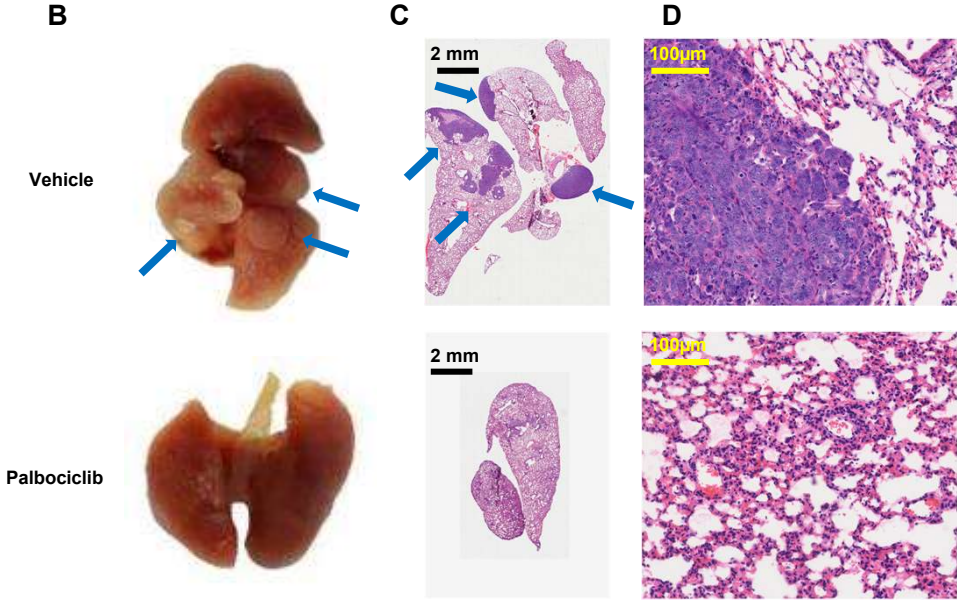
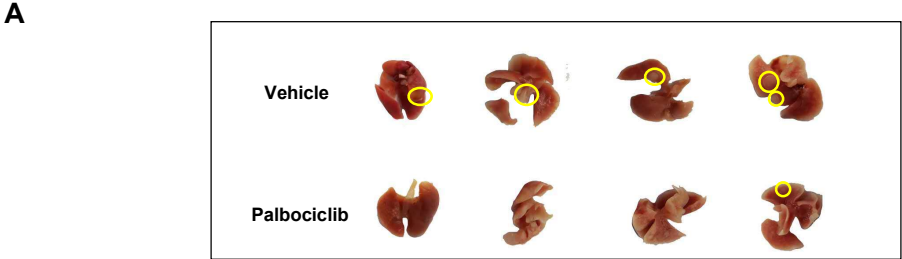
Supplementary Figure S6



Supplementary Figure S7



Supplementary Figure S8



Supplementary Figure S9

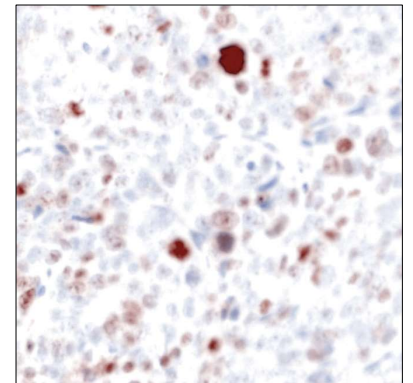
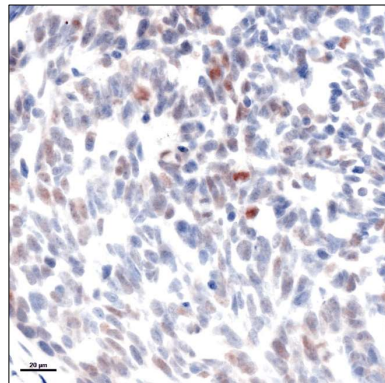
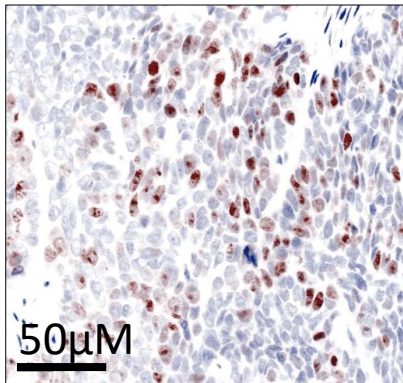
Ki-67

Xeno23

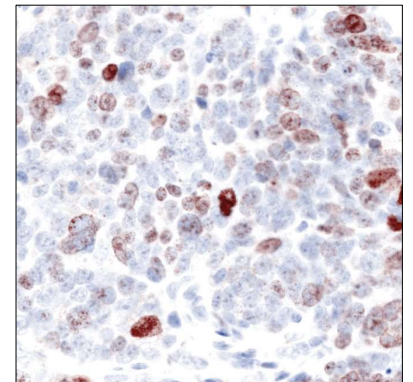
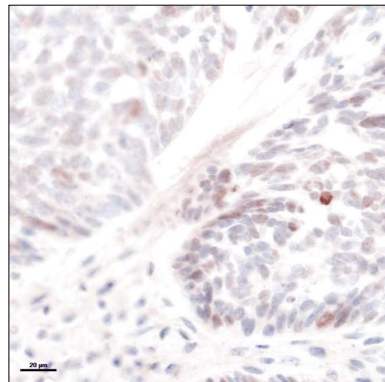
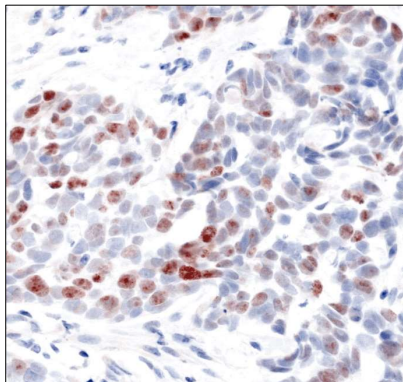
Xeno 76

C666-1

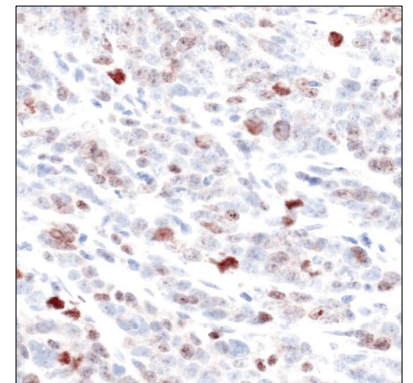
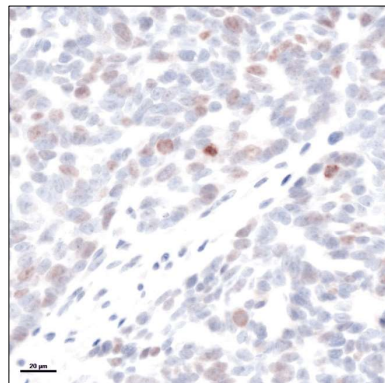
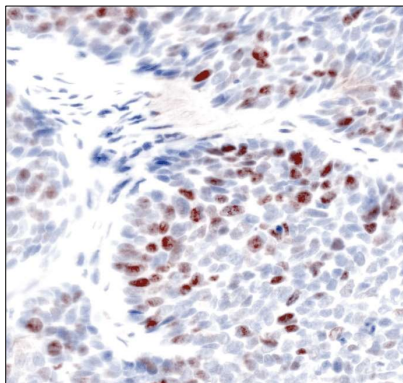
Vehicle



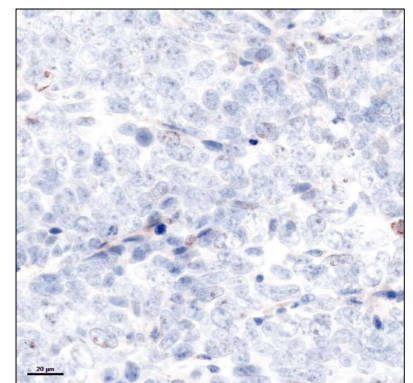
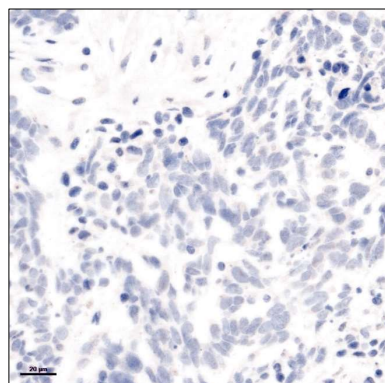
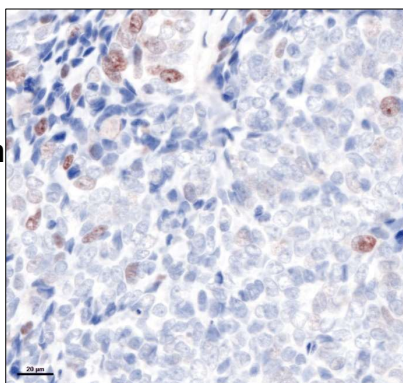
Palbociclib



SAHA



Combination

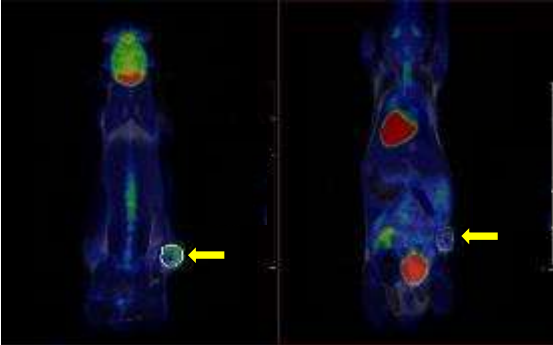


Supplementary Figure S10

Xeno23

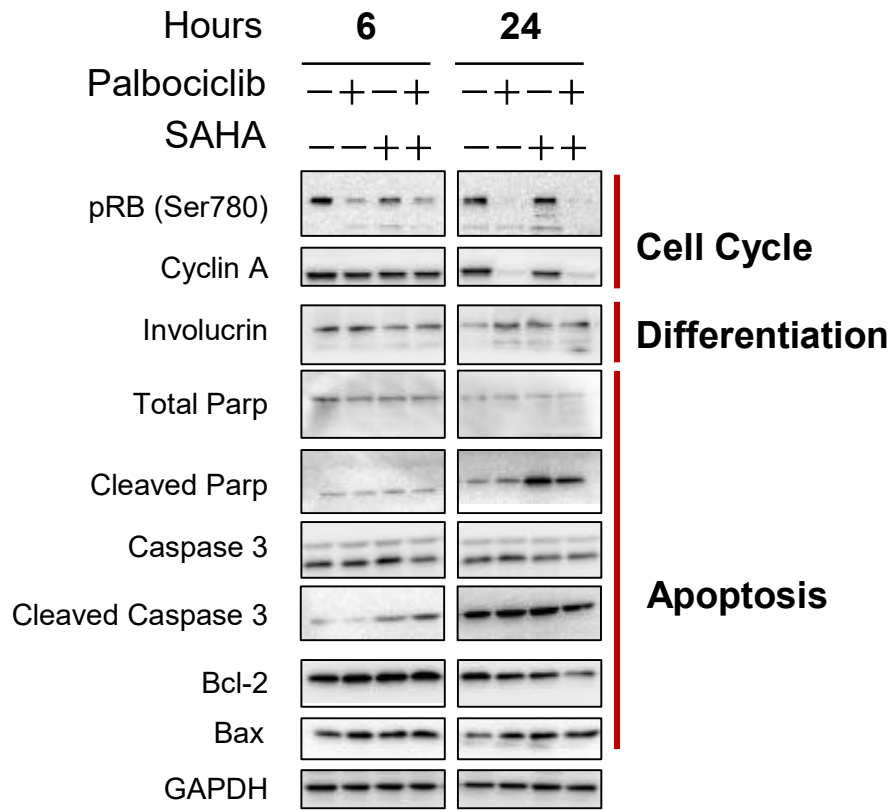
Vehicle

Combination

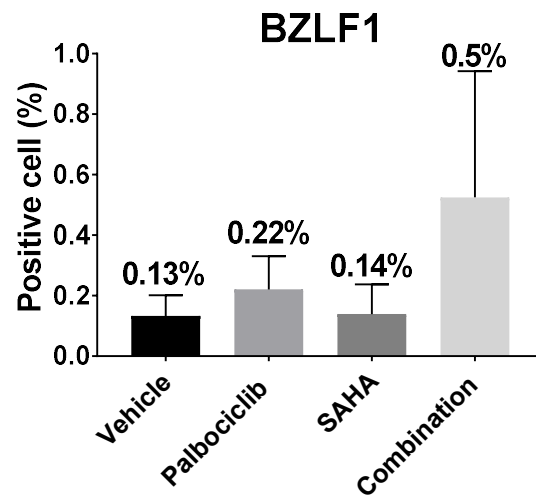
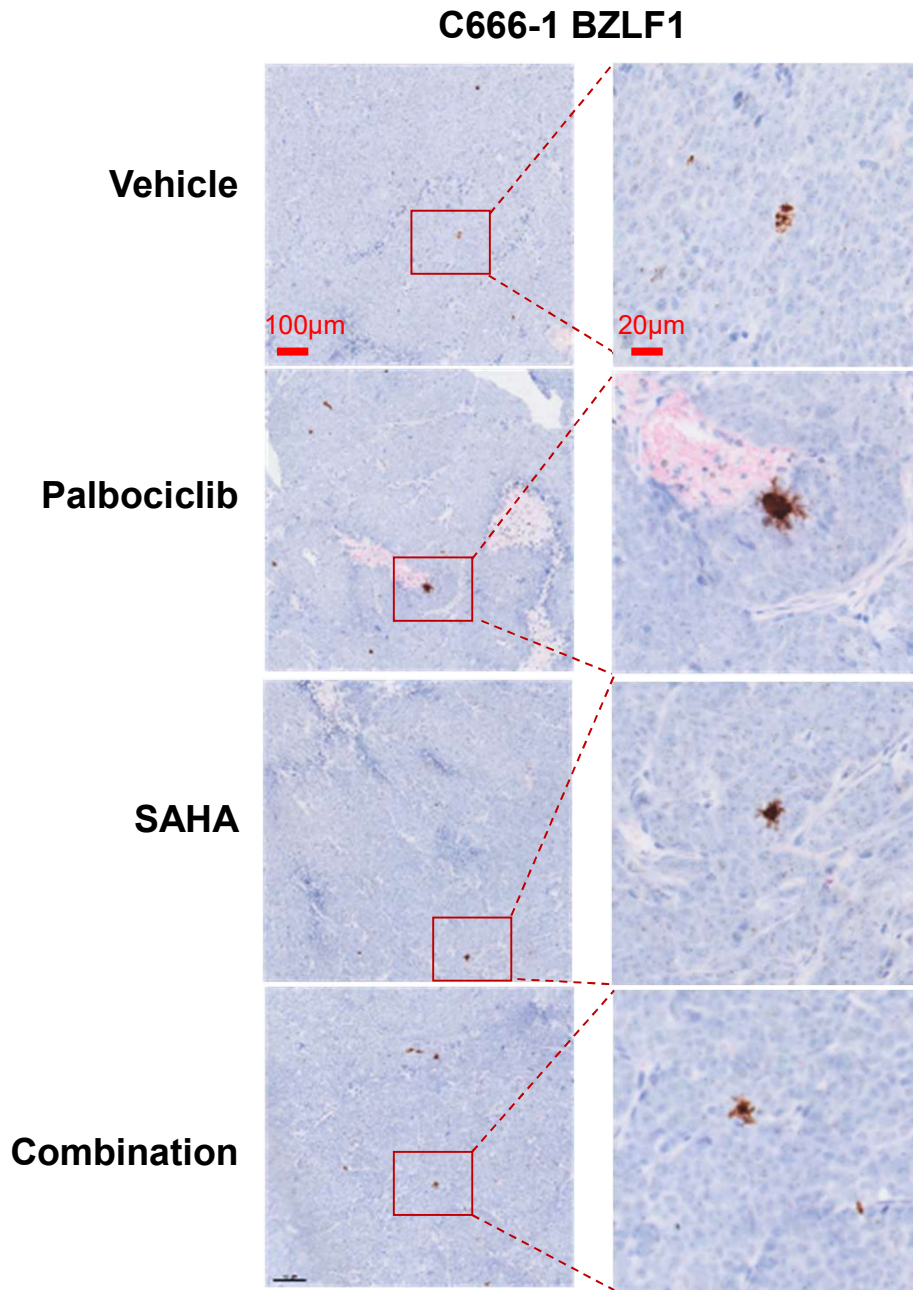


Xeno23	SUV mean (Normalized by liver metabolism)
Vehicle	0.76
PD+SAHA	0.09

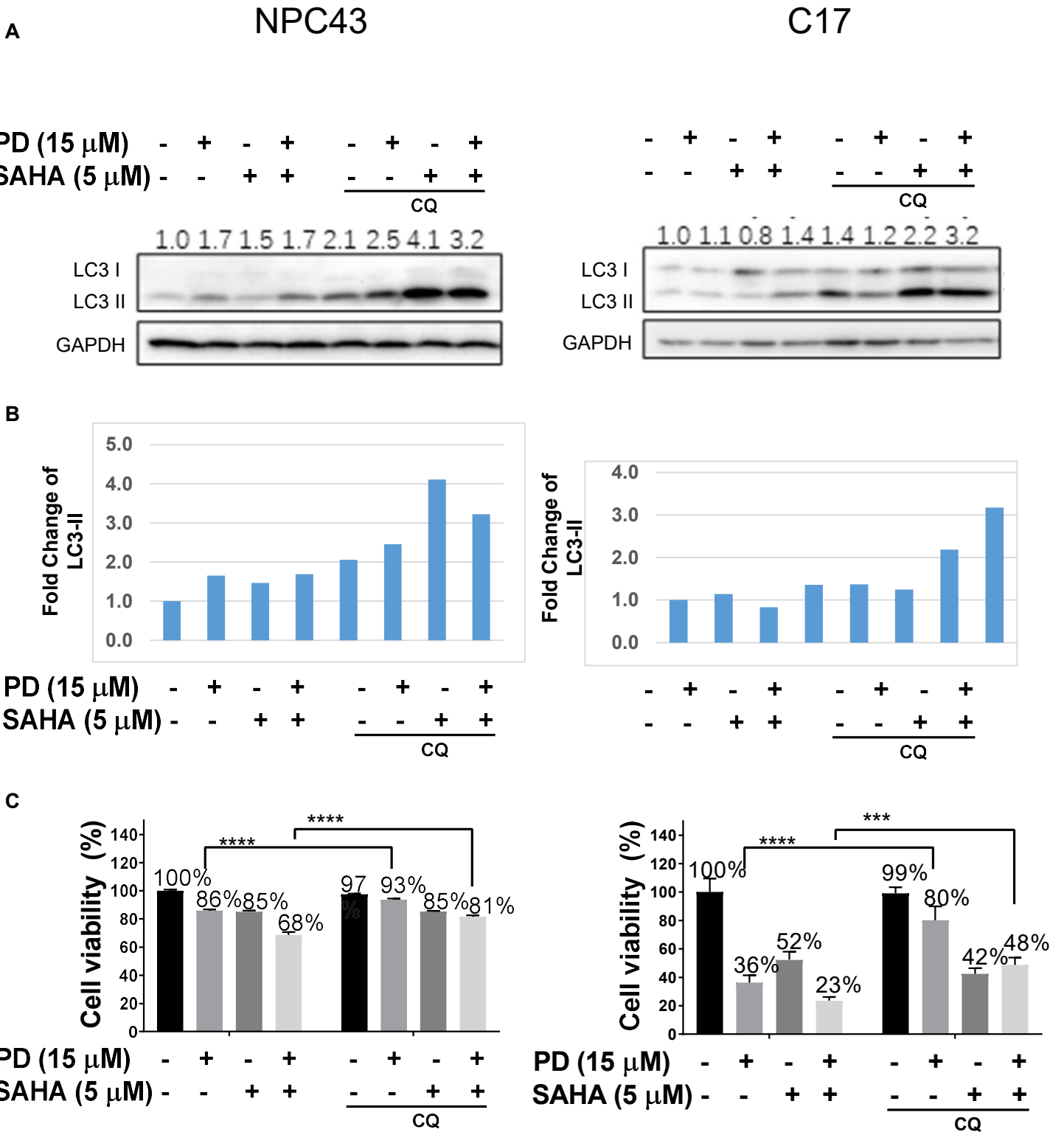
Supplementary Figure S11



Supplementary Figure S12

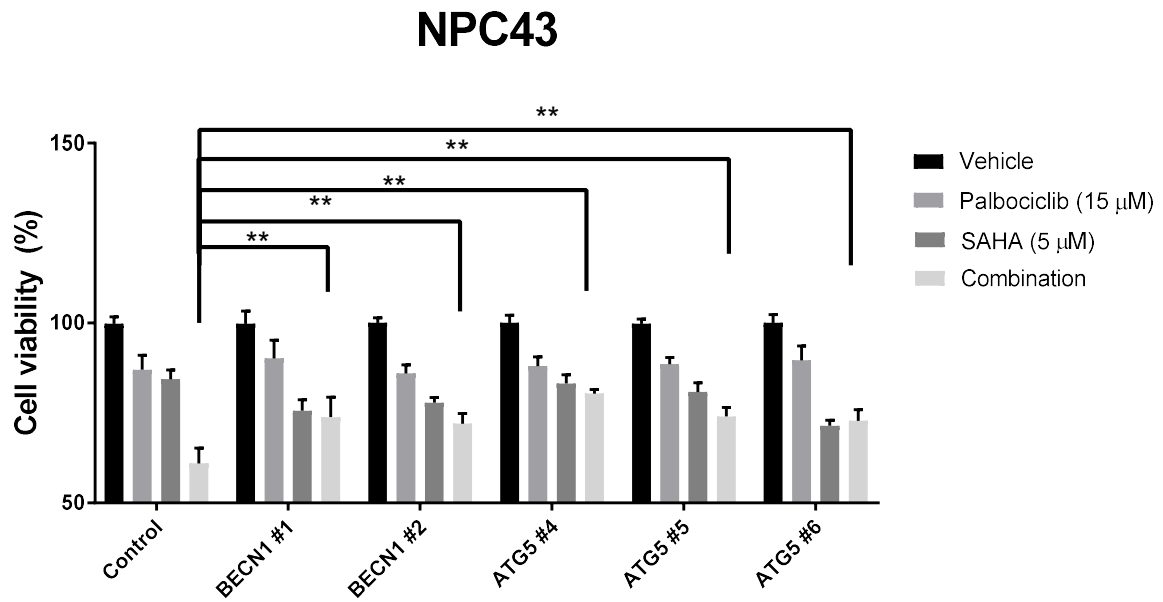


Supplementary Figure S13

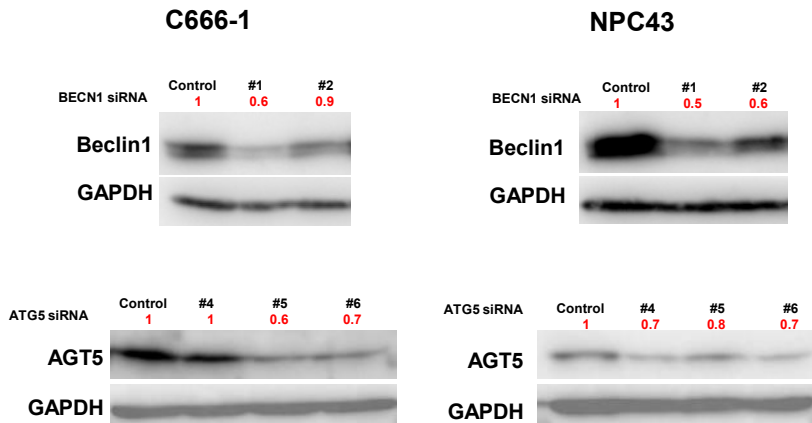


Supplementary Figure S14

A

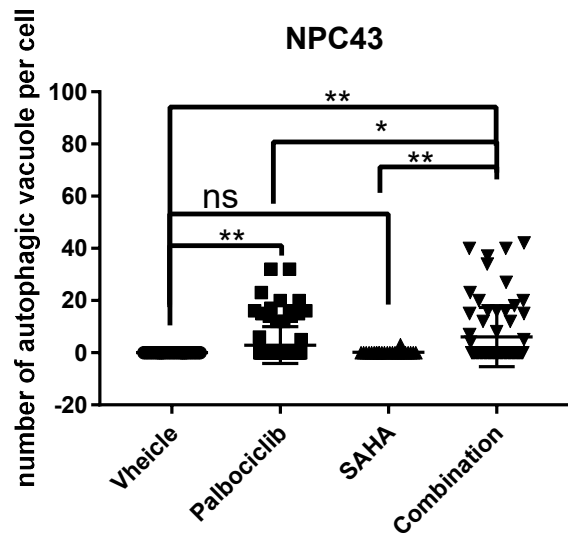
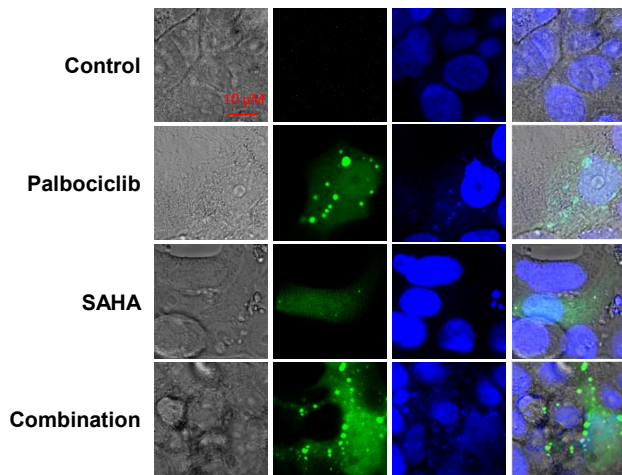


B

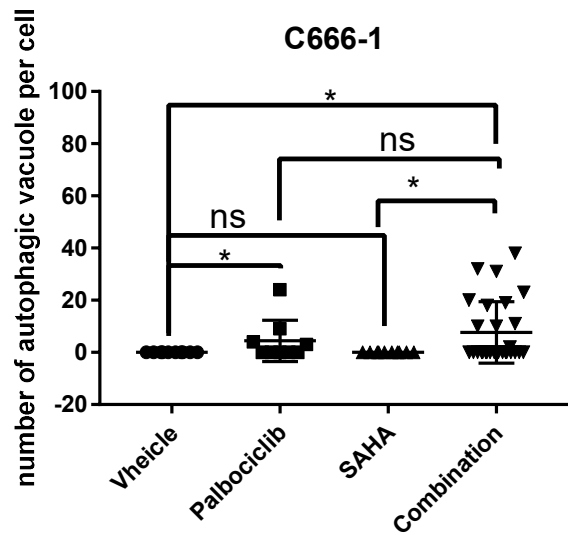
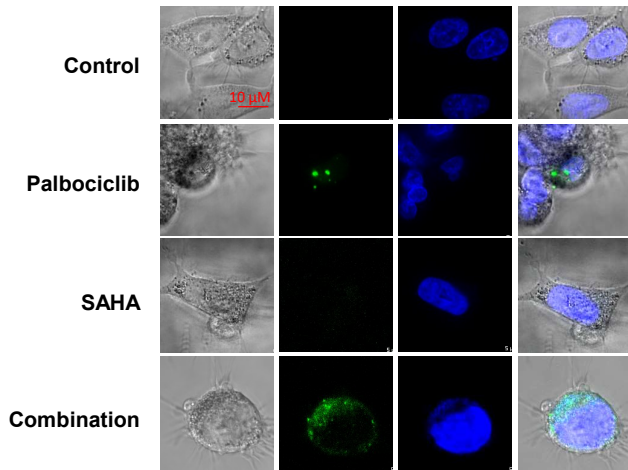


Supplementary Figure S15

NPC43



C666-1



C17

