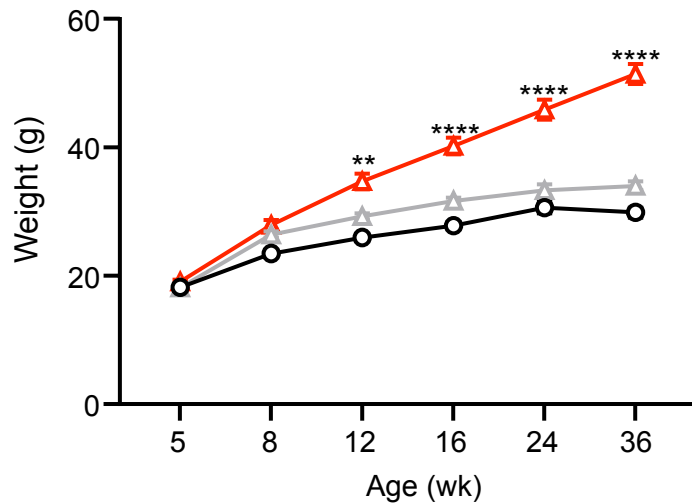
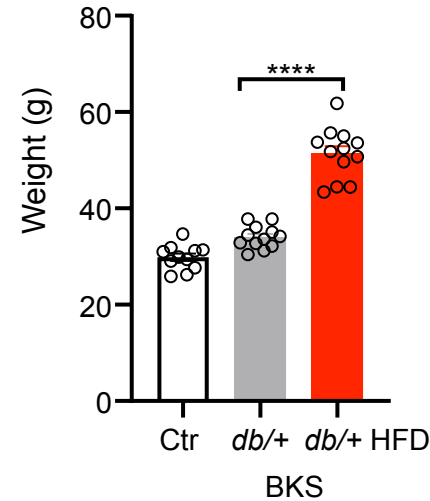


Supplementary Figure 1

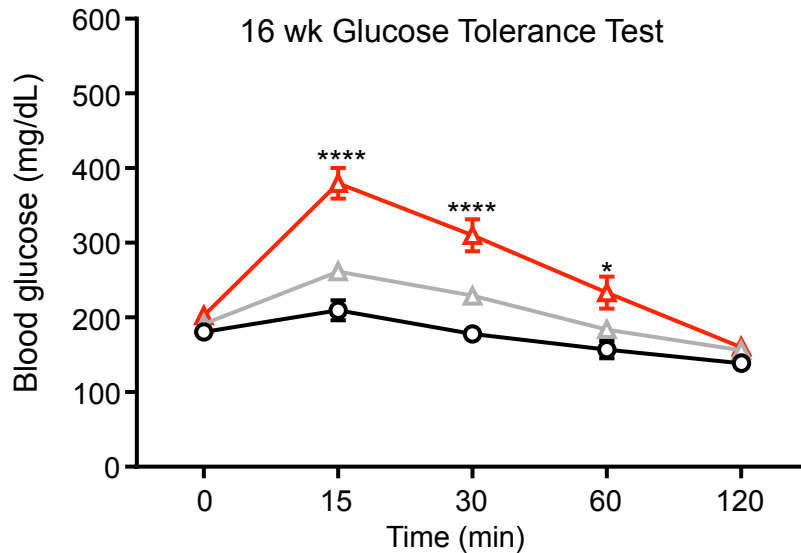
A



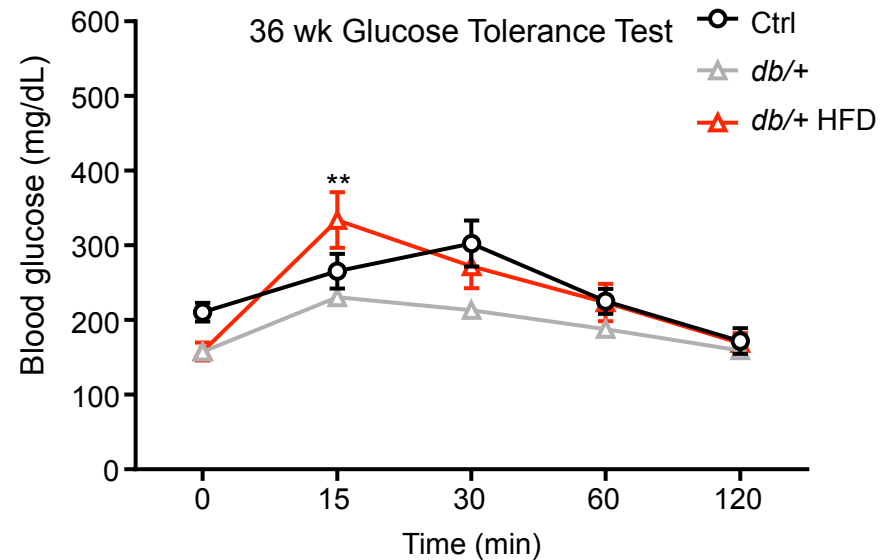
B



C



D



Supplementary Fig. 1. *db/+* mice fed a HFD gain weight and display impaired glucose tolerance. (A-D) Longitudinal body weight measurement (A), terminal body weight measurement (B), glucose tolerance test at 16 weeks (C), and at 36 weeks (D) in *db/+* mice placed on HFD (*db/+* HFD), control (*db/+*) and WT control (Ctr) mice; n = 11-12 mice per group; *P < 0.05, **P < 0.01, ***P < 0.001, ****P < 0.0001 vs. *db/+*; by one-way ANOVA. Data are expressed as the mean ± s.e.m.