

Supplemental Digital Content:

Delirium Incidence, Duration and Severity in Critically Ill Patients with COVID-19

Table of Contents

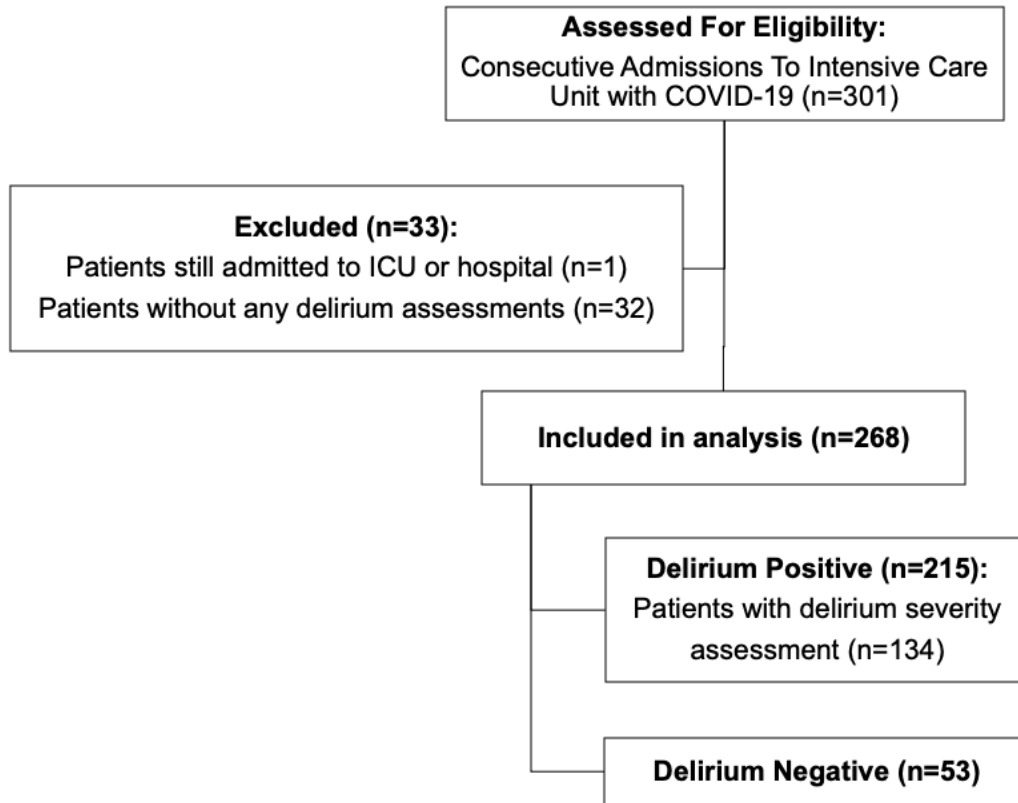
eFigure 1. Flow Diagram of Patients Screened for Inclusion

eTable 1. Laboratory Values and Hemodynamic Characteristics

eFigure 2. Daily Rates of Patient's Discharge Status

eTable 2. Delirium Rates and Clinical Outcomes During 2009-2010

eFigure 1. Flow Diagram of Patients with COVID-19 Screened For Inclusion in the Cohort

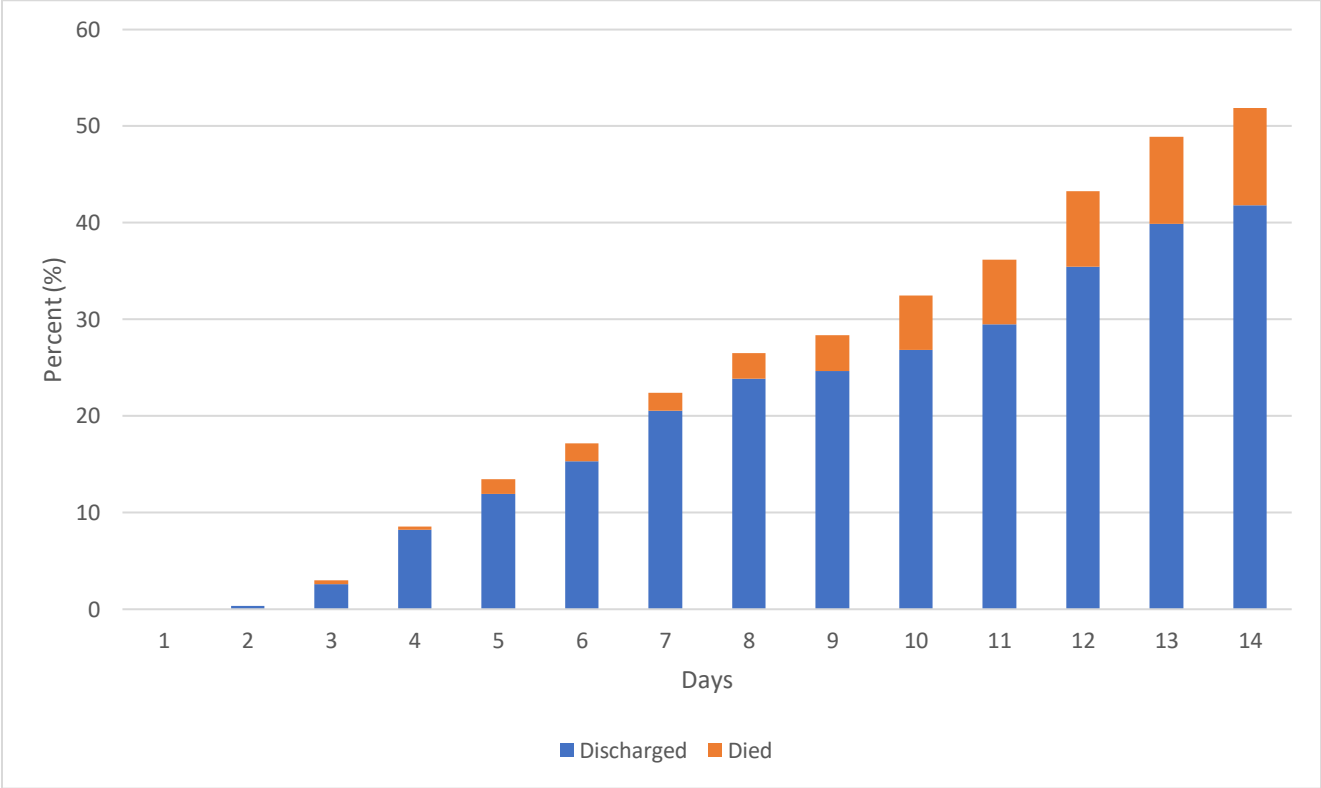


eTable 1. Laboratory Values and Hemodynamic Characteristics of Patients Admitted with Novel Coronavirus to the Intensive Care Unit^a

Variable	Total (n=268)	Delirium Positive (n=215)	Delirium Negative (n=53)	P value
All ICU Patients				
Sodium mmol/L, median (IQR)	137.0 (135.0-140.0)	137.0 (135.0-140.0)	137.0 (135.0-140.0)	0.449
Hematocrit %, median (IQR)	37.0 (32.0-41.0)	36.6 (31.8-40.0)	38.8 (35.8-42.5)	0.004
Platelet count x10 ³ , median (IQR)	213.5 (151.0-268.0)	209.5 (147.0-260.0)	228.0 (182.5-284.0)	0.128
Creatinine mg/dl, median (IQR)	1.1 (0.8-1.9)	1.1 (0.8-2.0)	1.0 (0.8-1.5)	0.092
pH, median (IQR)	7.35 (7.29-7.40)	7.35 (7.28-7.39)	7.40 (7.31-7.44)	0.020
Mean Arterial Pressure mmHg, median (IQR)	102.0 (90.0-115.0)	102.0 (89.5-117.0)	102.0 (91.0-114.0)	0.968

^aData presented is from laboratory values, arterial blood gas results, vitals, and other components of the electronic medical record (first 24 hours of intensive care unit admission).

eFigure 2. Daily Rates of Patient's Discharge Status (Discharge from intensive care unit or death)



eTable 2. Delirium rates and clinical outcomes for patients admitted to the intensive care unit during the 2009-2010 Influenza Pandemic.

Outcomes	2010 (n=383)^a
Delirium Incidence and Subtypes	
Delirium incidence ^b (%)	22.7
Hypoactive delirium ^c (%)	19.3
Hyperactive delirium ^c (%)	3.4
Coma and Level of Consciousness	
Coma ^d (%)	24.0
Level of consciousness at ICU admission by average RASS score ^e – median IQR	-0.3 (-2, 0)
Diagnoses^f	
Acute Respiratory failure (%)	26.6
Acute renal failure (%)	29.5
Trauma (%)	15.9
Hypoalbuminemia	26.6
Clinical Outcomes	
Underwent invasive mechanical ventilation (%)	36.0
Hospital mortality (%)	3.4
Medication Orders^g	
Benzodiazepines (%)	20.4
Opioids (%)	66.3

^an: Unique patient admissions. ^bPatients with delirium by positive CAM-ICU at any time during the follow up period (at first assessment or during subsequent screenings in the intensive care unit); ^cDelirium subtypes determined based on first positive delirium screening. ^dComa defined by RASS score -4 or -5. ^eRASS: Richmond Agitation-Sedation Scale. ^fDiagnoses extracted from the medical record. ^gMedication orders indicate the percentage of patients with active orders.