

Supplementary Materials

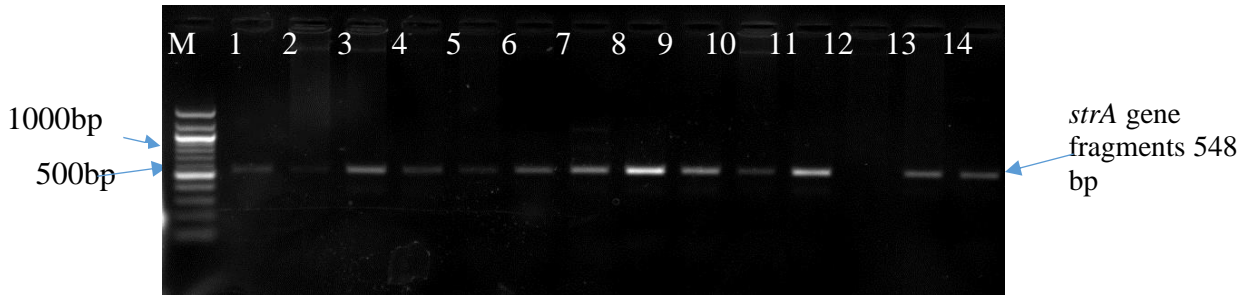


Figure S1: Representative agarose gel image of the *strA* gene products. Lane M: 100bp DNA ladder; Lanes 1-11 and 13-14: *strA* positive gene fragments and Lane 12: negative control.

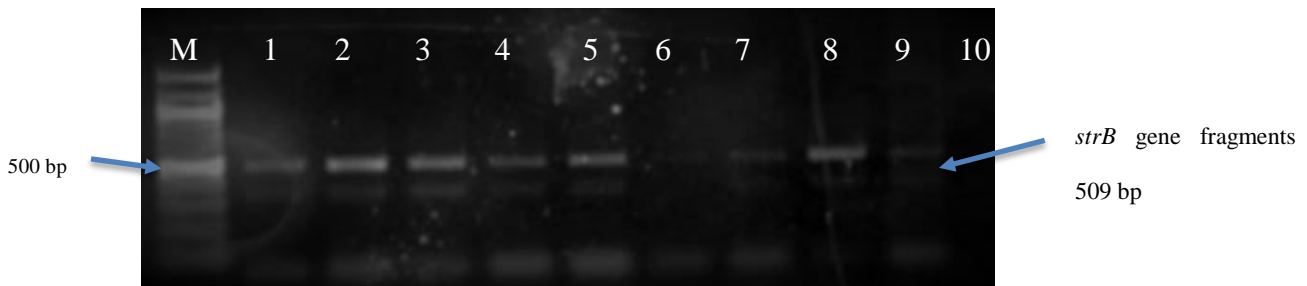


Figure S2: Representative agarose gel of *strB* gene fragments amplified from isolates. Lane M: 100bp DNA ladder; Lanes 1-5, 7-9: *strB* positive fragments, and Lane 10: negative control.

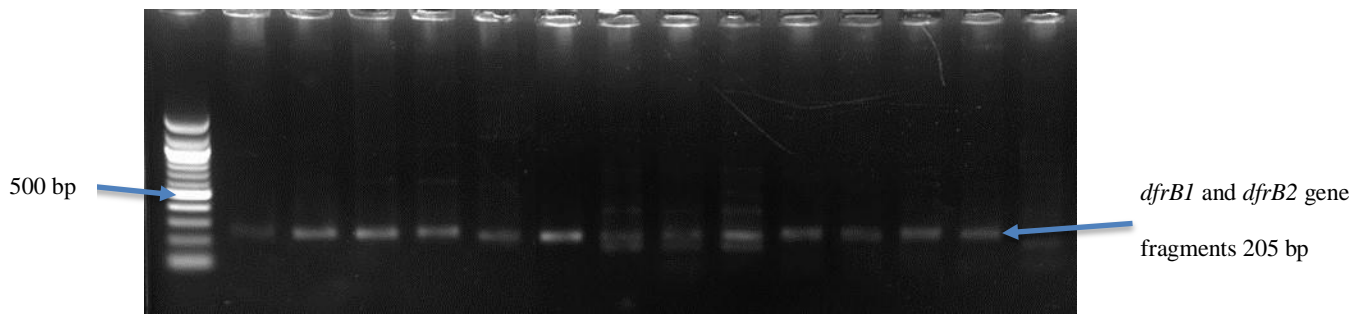


Figure S3: An agarose gel image of the *dfrB1* and *dfrB2* gene fragments amplified from isolates. Lane M:100 base pairs DNA ladder; Lanes 1-13: *dfrB1* and *dfrB2* positive gene fragments; Lane 14: negative control.

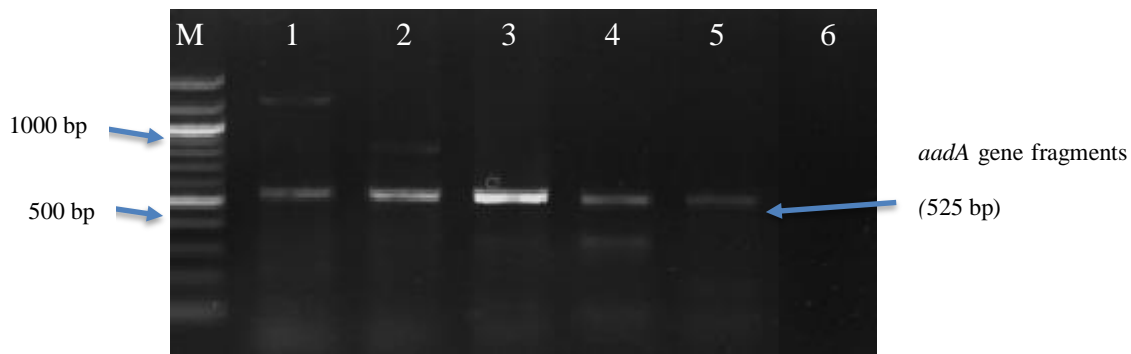


Figure S4: An image depicting a 1.3% (w/v) agarose gel of the *aadA* gene fragments amplified from MDR isolates. Lane M: 100bp DNA ladder; Lanes 1-5: *aadA* gene fragments of representative isolates and Lane 6: negative control.