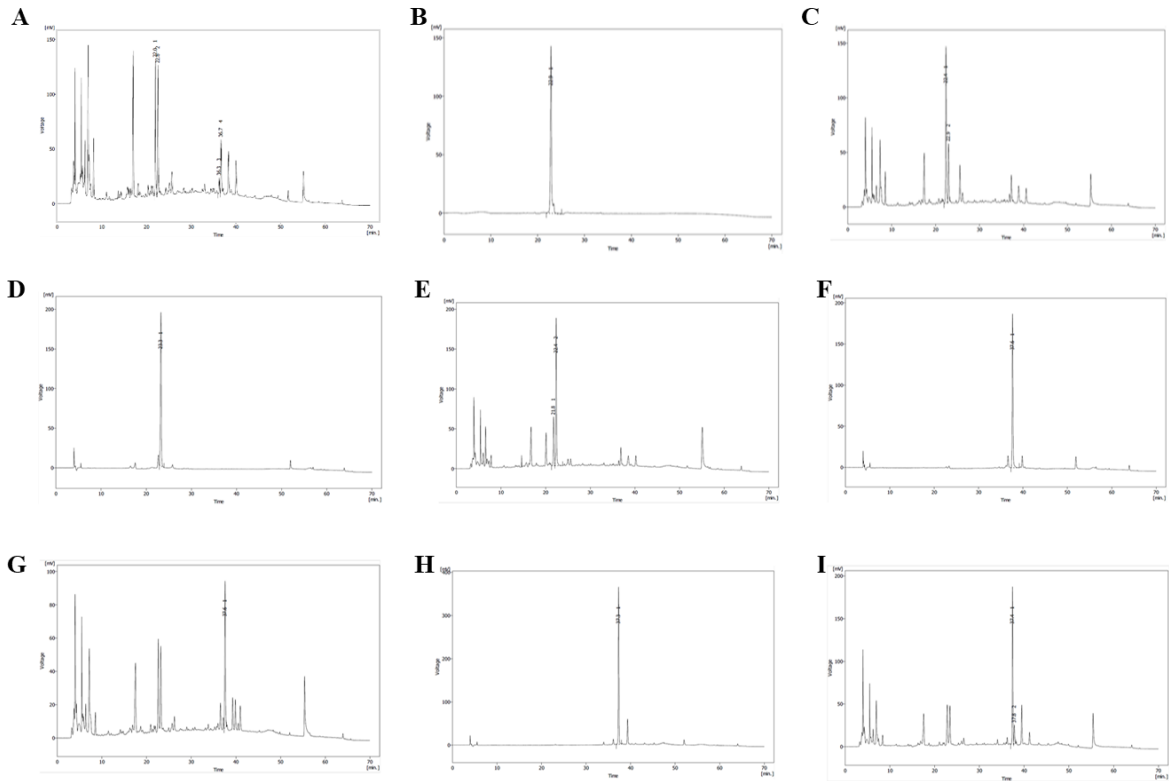
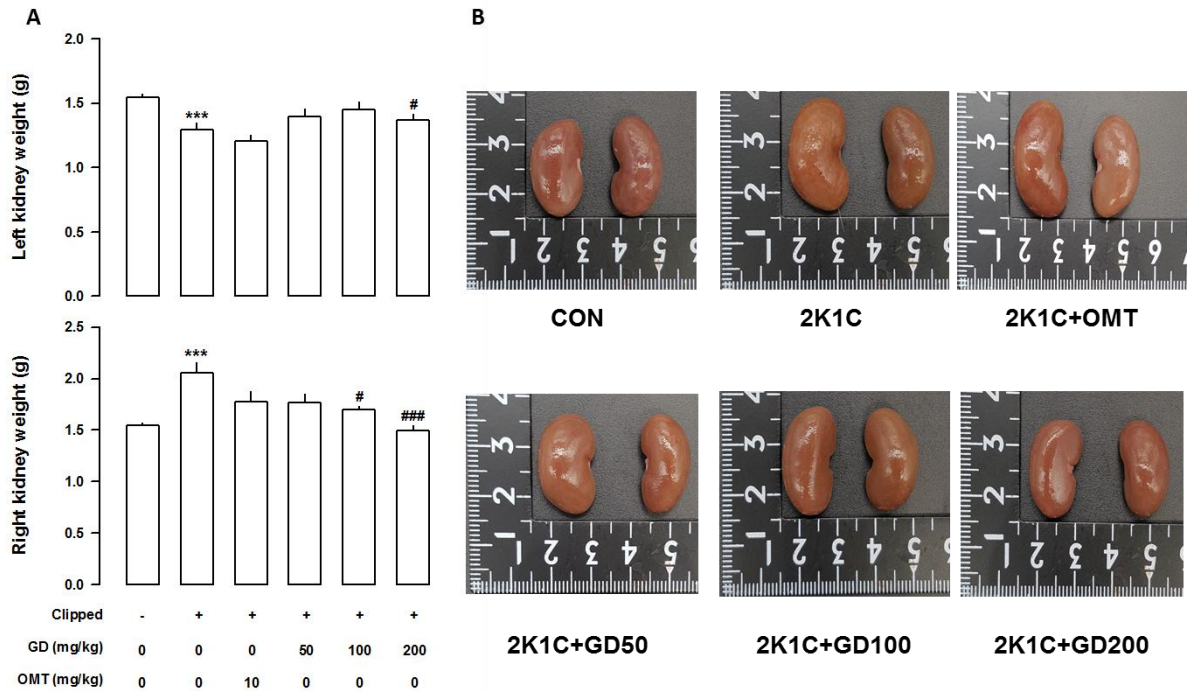


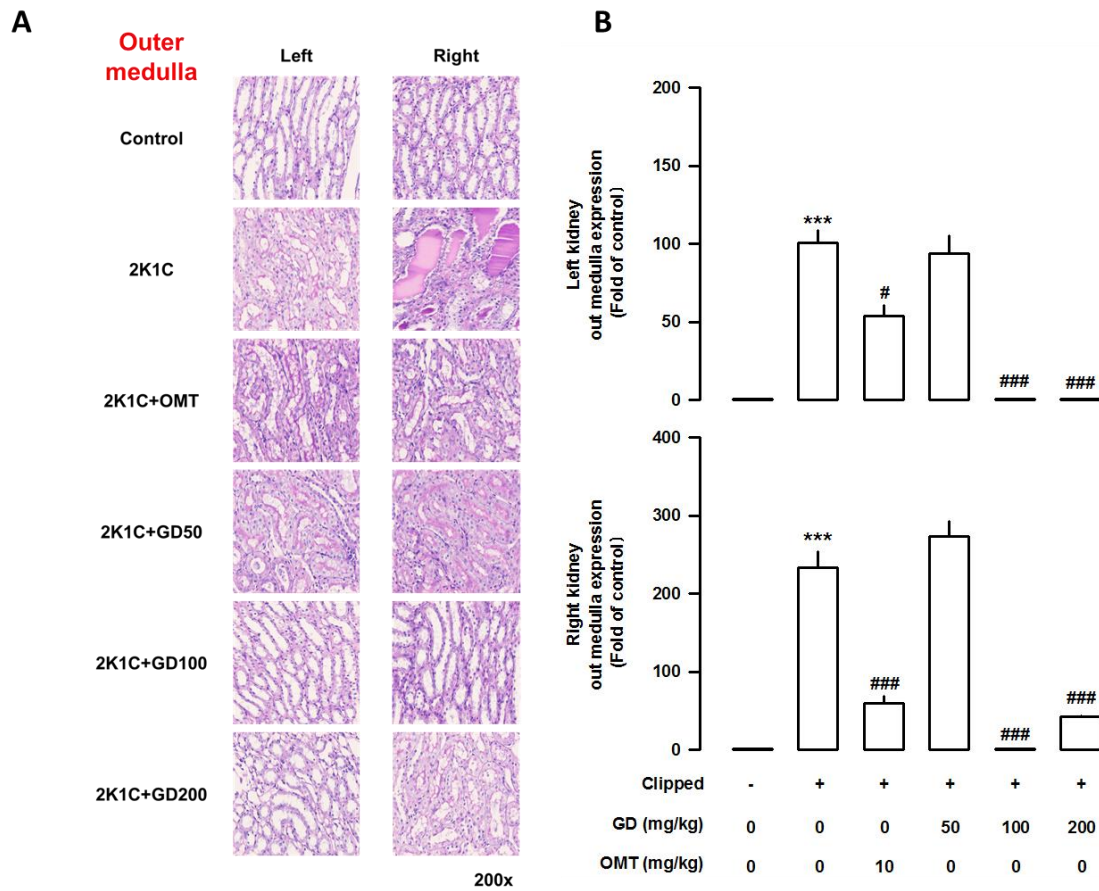
Supplementary Materials.



Supplementary Figure 1: High-performance liquid chromatography (HPLC) chromatograms of *Gynura divaricata* (L.) DC (GD). (A) GDa; (B) GDB2-3; (C) GDB2-3 with GDa; (D) GDB2-4; (E) GDB2-4 with GDa; (F) GDB4-1; (G) GDB4-1 with GDa; (H) GDB4-4; (I) GDB4-4 with GDa.



**Supplementary Figure 2: Effects of *Gynura divaricata* (L.) DC (GD) on kidney weight and shape.** (A) Effect of GD on the left and right kidney weight; (B) Kidney size. Each value shows the mean  $\pm$  standard error ( $n = 10$  per group). \*\*\*  $p < 0.001$ , vs. CONT and #  $p < 0.05$ , ###  $p < 0.0001$  vs. 2K1C.



**Supplementary Figure 3: Effects of *Gynura divaricata* (L.) DC (GD) on kidney outer medullar fibrosis.** (A) Periodic acid-Schiff staining of the kidney in the outer medulla (magnification  $\times 200$ ); (B) Quantitative assessments, representing the results of five independent experiments. The values are expressed as the mean  $\pm$  standard error ( $n = 5$  per group). \*\*\*  $p < 0.001$ , vs. CONT and #  $p < 0.05$ , ###  $p < 0.0001$  vs. 2K1C.

**Supplementary Table 1.**  $EC_{50}$  and  $E_{max}$  values for ACh, SNP, and ANP-induced relaxation of GD treatment in 2K1C rats.

	ACh		SNP		ANP	
	$E_{max}$ (%)	$\log EC_{50}$ (M)	$E_{max}$ (%)	$\log EC_{50}$ (M)	$E_{max}$ (%)	$\log EC_{50}$ (M)
cont	93.70 $\pm$ 2.83	-8.81 $\pm$ 0.05	91.34 $\pm$ 0.54	-8.99 $\pm$ 0.03	80.60 $\pm$ 2.00	-8.44 $\pm$ 0.28
2K1C	59.61 $\pm$ 2.22***	-7.79 $\pm$ 0.09*	77.72 $\pm$ 3.77**	-8.14 $\pm$ 0.07*	54.64 $\pm$ 7.28**	-8.00 $\pm$ 0.31*
2K1C+OMT	92.22 $\pm$ 3.79##	-8.45 $\pm$ 0.17#	97.72 $\pm$ 1.52###	-8.88 $\pm$ 0.02#	88.91 $\pm$ 2.71###	-8.69 $\pm$ 0.06#
2K1C+GD50	76.45 $\pm$ 3.46	-8.09 $\pm$ 0.07	84.71 $\pm$ 2.76	-8.66 $\pm$ 0.05	72.85 $\pm$ 4.49#	-8.51 $\pm$ 0.08#
2K1C+GD100	86.28 $\pm$ 3.12##	-8.12 $\pm$ 0.08	90.96 $\pm$ 2.88#	-8.84 $\pm$ 0.03#	80.09 $\pm$ 4.17##	-9.36 $\pm$ 0.10#
2K1C+GD200	92.72 $\pm$ 4.08##	-9.03 $\pm$ 0.14#	88.74 $\pm$ 2.43#	-8.94 $\pm$ 0.03#	76.41 $\pm$ 4.07#	-9.36 $\pm$ 0.09#

EC<sub>50</sub> and E<sub>max</sub> values of ACh, SNP, and ANP were calculated of the relaxation-response curves to GD treatment in 2K1C rats. Values are means ±SE of 6 experiments for EC<sub>50</sub> and E<sub>max</sub>. \*p < 0.01, \*\*p < 0.01 \*\*\*p < 0.01 vs. Cont.; # p < 0.05, ##p < 0.01, and ### p < 0.001 vs. 2K1C.