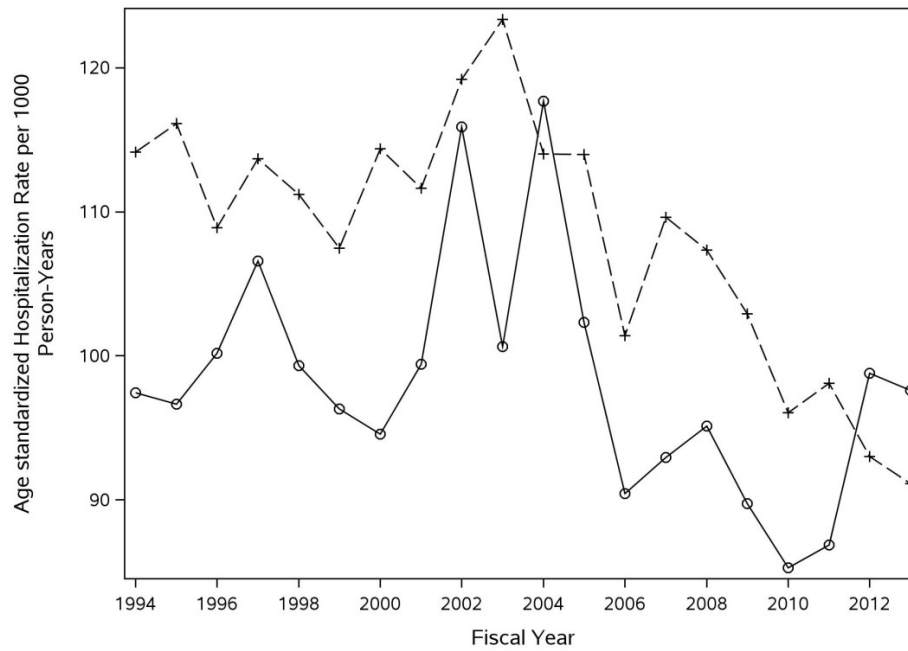


**SUPPLEMENTAL MATERIAL**

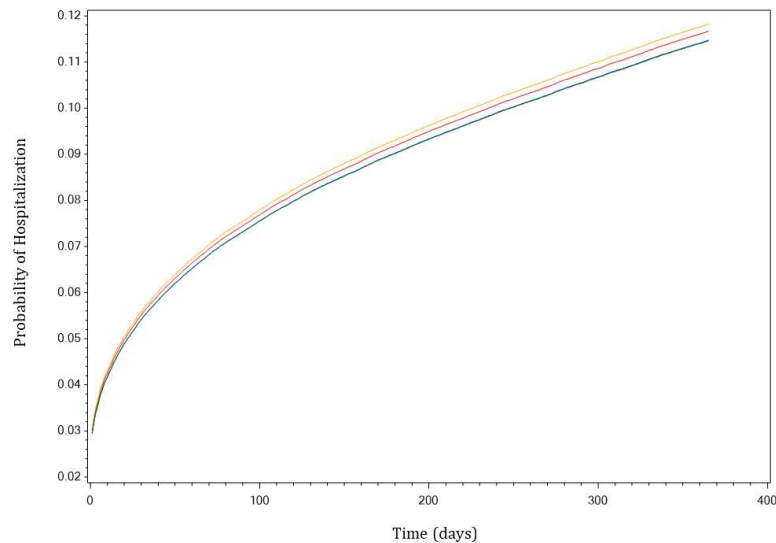
Figure 1. Sex-specific temporal trends in heart failure hospitalizations within one year of ambulatory heart failure diagnosis. Hospitalization rates were directly standardized by age using the 1991 Canadian population aged  $\geq 40$  years as the reference population and expressed per 1000 person-years.

**Legend:** The solid line represents trends in women. The dotted line represents trends in men.



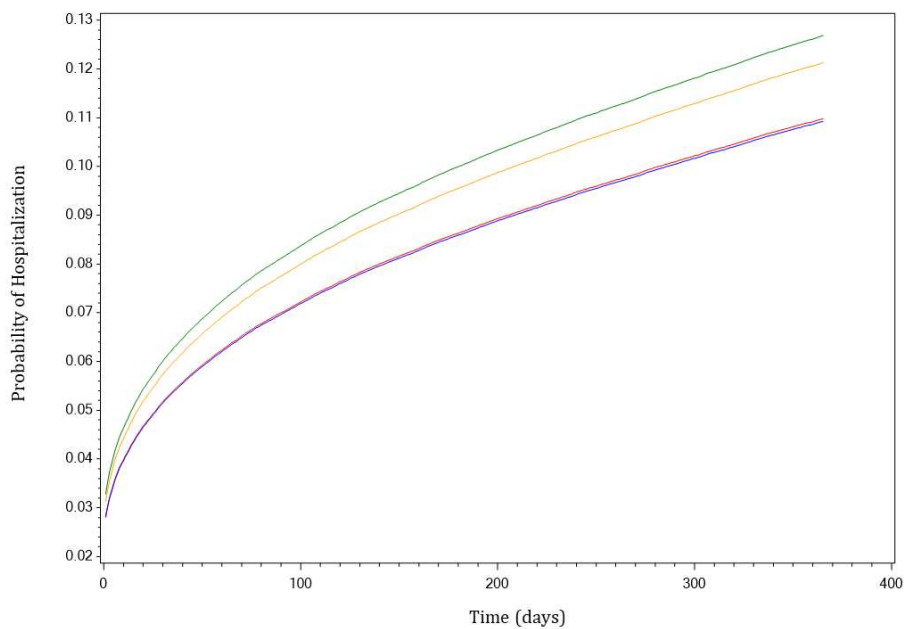
eFigure 2a. Stacked cumulative incidence curves representing temporal trends of heart failure hospitalization within one year of diagnosis in men.

**Legend:** The red line represents cumulative incidence of hospitalization in the historical cohort (1994-1998). The blue line represents hospitalizations in the 1999-2003 cohort. The orange line represents hospitalizations in the 2004-2008 cohort. The green line (which is nearly superimposed on the blue line) represents hospitalizations in the modern cohort (2009-2013).



eFigure 2b. Stacked cumulative incidence curves representing temporal trends of heart failure hospitalization within one year of diagnosis in women.

**Legend:** The red line represents cumulative incidence of hospitalization in the historical cohort (1994-1993). The blue line represents hospitalizations in the 1999-2003 cohort. The orange line represents hospitalizations in the 2004-2008 cohort. The green line represents hospitalizations in the modern cohort (2009-2013).



eTable 1. Crude and age standardized incidence rates of ambulatory heart failure per 100,000 population.

Year	Sex	HF Cases	Denominator	Incidence Rate		95% CI	
				Crude	Standardized	Lower	Upper
1994	Female	10123	2544992	397.76	368.95	361.74	376.27
	Male	8998	2290949	392.76	480.63	470.55	490.88
1995	Female	9502	2615417	363.31	335.99	329.21	342.88
	Male	8622	2359605	365.40	445.26	435.73	454.95
1996	Female	9312	2686591	346.61	319.55	313.03	326.18
	Male	8621	2430438	354.71	430.39	421.20	439.74
1997	Female	9518	2753376	345.68	319.39	312.93	325.94
	Male	8939	2497920	357.86	433.52	424.43	442.76
1998	Female	9221	2815590	327.50	303.76	297.52	310.10
	Male	8727	2560459	340.84	411.86	403.12	420.74
1999	Female	9158	2880244	317.96	294.91	288.82	301.09
	Male	8810	2624357	335.70	403.94	395.42	412.61
2000	Female	8921	2948815	302.53	279.98	274.11	285.94
	Male	8548	2693918	317.31	382.41	374.22	390.74
2001	Female	8466	3018031	280.51	258.26	252.69	263.91
	Male	8132	2763947	294.22	351.15	343.46	358.98
2002	Female	8403	3088112	272.11	249.62	244.21	255.11
	Male	8441	2835687	297.67	353.43	345.83	361.16
2003	Female	8242	3159200	260.89	237.25	232.05	242.53
	Male	8177	2908486	281.14	333.06	325.78	340.45
2004	Female	8082	3226254	250.51	227.56	222.51	232.70
	Male	8101	2976603	272.16	320.70	313.67	327.86
2005	Female	8283	3286052	252.07	229.05	224.02	234.17
	Male	8588	3037995	282.69	328.77	321.77	335.87
2006	Female	8107	3340543	242.69	220.03	215.14	225.01
	Male	8774	3091317	283.83	323.41	316.60	330.32
2007	Female	7993	3388916	235.86	211.27	206.53	216.09
	Male	8929	3136755	284.66	318.62	311.98	325.36
2008	Female	8578	3437633	249.53	222.31	217.49	227.21
	Male	9306	3182320	292.43	322.03	315.46	328.71
2009	Female	8433	3486229	241.89	213.46	208.78	218.22
	Male	9312	3225967	288.66	313.38	306.98	319.87
2010	Female	8366	3534061	236.72	208.36	203.77	213.03
	Male	9262	3269161	283.31	301.92	295.75	308.19
2011	Female	8424	3578607	235.40	201.79	197.35	206.31
	Male	9292	3308050	280.89	294.17	288.17	300.26
2012	Female	8526	3618133	235.65	199.93	195.55	204.39
	Male	9585	3341596	286.84	293.47	287.58	299.45
2013	Female	8997	3653530	246.25	205.83	201.43	210.30
	Male	10510	3369203	311.94	312.82	306.82	318.90

HF, heart failure; CI, confidence interval

eTable 2. Temporal trends of one-year mortality rates in men and women with incident heart failure.

<b>Time Cohort</b>	<b>Sex</b>	<b>Number of Deaths</b>	<b>Number of Incident HF Cases</b>	<b>Crude Rate (%)</b>	<b>Age-Standardized Rate (%; 95% CI)</b>
<b>April 1994-March 1999</b>	F	8319	47676	17.5	10.1 (9.5-10.8)
	M	8238	43907	18.8	11.4 (10.8-11.9)
<b>April 1999-March 2004</b>	F	7572	43190	17.5	9.9 (9.3-10.6)
	M	7365	42108	17.5	10.4 (9.9-10.8)
<b>April 2004-March 2009</b>	F	7148	41043	17.4	9.5 (9.0-10.1)
	M	7322	43698	16.8	9.8 (9.4-10.2)
<b>April 2009-March 2014</b>	F	7156	42746	16.8	8.6 (8.1-9.0)
	M	7138	47961	14.9	8.2 (7.9-8.6)

HF, heart failure; CI, confidence interval

eTable 3. Crude and age-standardized one-year mortality rates following ambulatory heart failure diagnosis. Rates are expressed per 1000 population.

Year	Sex	Deaths	Incident HF Cases	Mortality Rate		95% CI	
				Crude	Standardized	Lower	Upper
1994	Female	1733	10123	171.19	104.40	90.54	119.78
	Male	1710	8998	190.04	123.00	110.57	136.45
1995	Female	1629	9502	171.44	94.64	82.33	108.27
	Male	1578	8622	183.02	109.23	97.89	121.53
1996	Female	1679	9312	180.30	111.88	95.19	130.64
	Male	1643	8621	190.58	112.37	101.72	123.83
1997	Female	1674	9518	175.88	90.24	78.73	102.95
	Male	1741	8939	194.76	116.99	105.34	129.56
1998	Female	1604	9221	173.95	105.45	92.82	119.32
	Male	1566	8727	179.44	105.22	94.57	116.74
1999	Female	1527	9158	166.74	90.75	78.76	104.04
	Male	1522	8810	172.76	103.32	93.50	113.88
2000	Female	1556	8921	174.42	106.23	92.32	121.65
	Male	1489	8548	174.19	100.59	90.80	111.15
2001	Female	1473	8466	173.99	91.60	79.23	105.34
	Male	1364	8132	167.73	103.48	92.72	115.15
2002	Female	1504	8403	178.98	105.15	91.98	119.68
	Male	1511	8441	179.01	105.70	96.26	115.82
2003	Female	1512	8242	183.45	104.88	90.32	121.12
	Male	1479	8177	180.87	105.10	94.47	116.60
2004	Female	1468	8082	181.64	94.64	82.57	107.97
	Male	1486	8101	183.43	105.57	95.67	116.22
2005	Female	1445	8283	174.45	96.12	83.52	110.08
	Male	1454	8588	169.31	98.53	88.69	109.16
2006	Female	1395	8107	172.07	98.75	86.46	112.30
	Male	1459	8774	166.29	99.06	89.97	108.82
2007	Female	1384	7993	173.15	92.81	81.59	105.15
	Male	1475	8929	165.19	93.86	85.68	102.61
2008	Female	1456	8578	169.74	92.93	82.04	104.86
	Male	1448	9306	155.60	94.08	85.56	103.21
2009	Female	1464	8433	173.60	89.43	79.65	100.09
	Male	1461	9312	156.89	88.17	80.01	96.95
2010	Female	1373	8366	164.12	86.81	76.58	98.03
	Male	1396	9262	150.72	81.93	74.92	89.43
2011	Female	1418	8424	168.33	81.54	71.43	92.68
	Male	1381	9292	148.62	82.13	74.91	89.87
2012	Female	1404	8526	164.67	85.48	75.84	96.01
	Male	1377	9585	143.66	76.53	69.60	83.97
2013	Female	1497	8997	166.39	84.84	75.24	95.32
	Male	1523	10510	144.91	82.99	75.34	91.22

CI, confidence interval

eTable 4. Crude and age standardized one-year heart failure hospitalization rates in patients who were diagnosed with heart failure in an ambulatory setting between 1994-2013. Rate is expressed per 1000 person years.

Year	Sex	Heart Failure		Hospitalization Rate		95% CI	
		Hospitalizations	Denominator	Crude	Standardized	Lower	Upper
1994	Female	1105	8417.52	131.27	97.43	83.29	113.28
	Male	1108	7325.60	151.25	114.15	101.01	128.52
1995	Female	1067	7860.78	135.74	96.64	83.94	110.71
	Male	1001	7065.84	141.67	116.14	100.74	133.23
1996	Female	1065	7632.79	139.53	100.19	85.97	116.09
	Male	1015	7022.96	144.53	108.91	96.08	122.98
1997	Female	1028	7859.13	130.80	106.59	90.03	125.30
	Male	1082	7232.55	149.60	113.69	100.95	127.59
1998	Female	1006	7603.66	132.30	99.32	85.96	114.16
	Male	963	7180.72	134.11	111.22	97.10	126.82
1999	Female	983	7607.15	129.22	96.32	82.75	111.47
	Male	936	7305.04	128.13	107.48	95.17	120.95
2000	Female	917	7402.64	123.87	94.57	80.28	110.67
	Male	994	7033.00	141.33	114.37	101.66	128.24
2001	Female	903	6997.61	129.04	99.40	84.75	115.86
	Male	901	6711.51	134.25	111.64	97.95	126.71
2002	Female	937	6838.58	137.02	115.90	100.22	133.33
	Male	1007	6854.11	146.92	119.20	106.86	132.57
2003	Female	994	6645.28	149.58	100.66	86.86	116.02
	Male	1016	6629.94	153.24	123.36	110.31	137.54
2004	Female	1002	6508.80	153.95	117.67	101.49	135.69
	Male	993	6504.80	152.66	114.02	102.01	127.06
2005	Female	962	6775.02	141.99	102.34	88.21	118.09
	Male	1026	7052.13	145.49	113.98	101.59	127.48
2006	Female	982	6565.14	149.58	90.43	78.78	103.32
	Male	989	7237.69	136.65	101.40	90.93	112.73
2007	Female	987	6493.03	152.01	92.95	81.45	105.61
	Male	1069	7307.83	146.28	109.62	98.84	121.25
2008	Female	1046	6963.90	150.20	95.11	83.30	108.13
	Male	1097	7646.02	143.47	107.36	97.12	118.38
2009	Female	1021	6841.22	149.24	89.74	79.39	101.06
	Male	1085	7697.71	140.95	102.92	92.38	114.34
2010	Female	1042	6799.72	153.24	85.28	75.41	96.08
	Male	1078	7694.92	140.09	96.05	86.94	105.86
2011	Female	1061	6842.81	155.05	86.86	76.87	97.78
	Male	1038	7754.49	133.86	98.10	87.99	109.06
2012	Female	1137	6895.19	164.90	98.80	87.24	111.46
	Male	1097	8017.47	136.83	93.00	84.28	102.37
2013	Female	1159	7269.34	159.44	97.59	86.03	110.27
	Male	1205	8772.03	137.37	91.14	82.26	100.71

CI, confidence interval