

Article

# Change in age at diagnosis of oropharyngeal cancer in the United States, 1975-2016

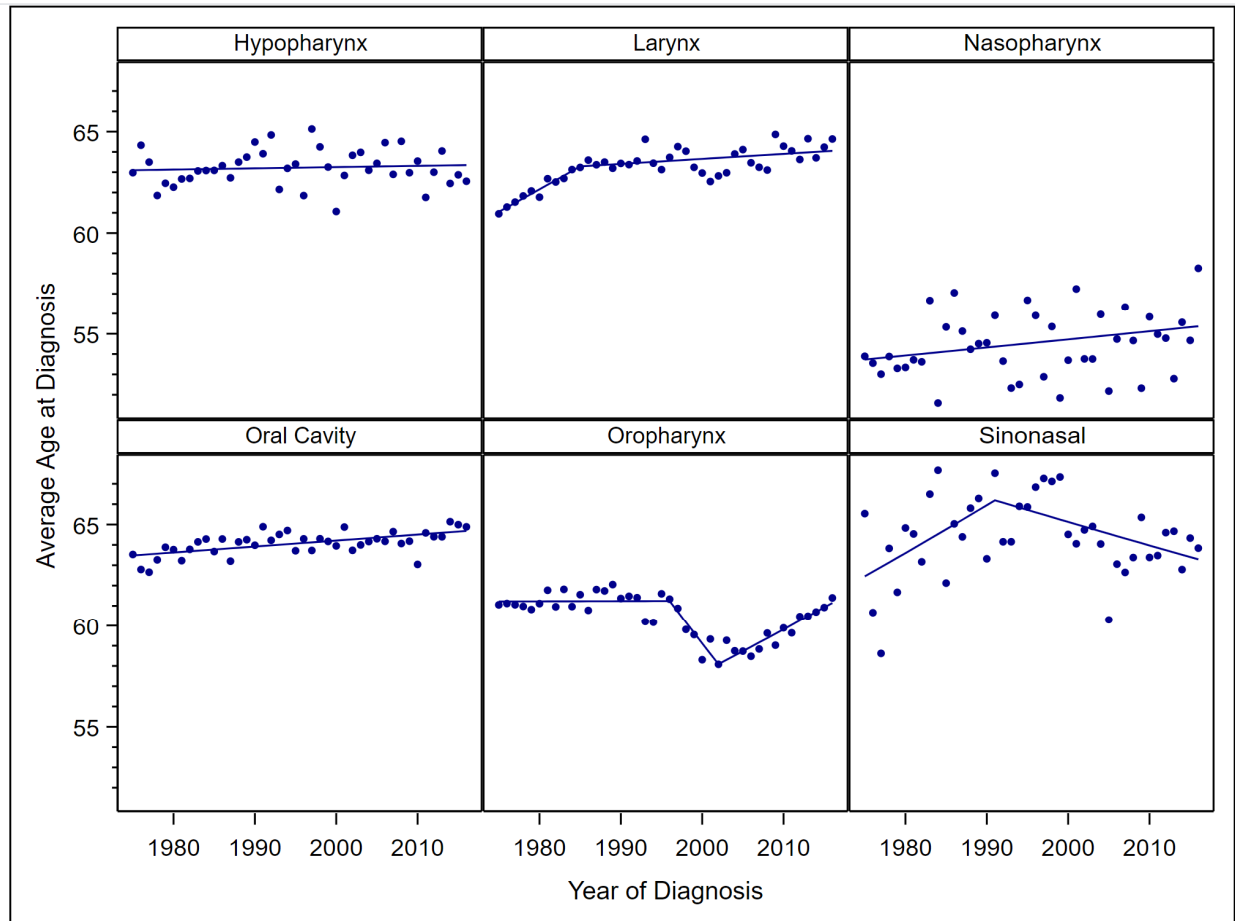
Brittany J Cline,<sup>\*</sup> Matthew C Simpson, Matthew Gropler, Aleksandr R Bukatko, Eric Adjei Boakye, Kahee A Mohammed and Nosayaba Osazuwa-Peters

## Supplementary Information

**Table S1.** Annual percentage changes and average annual percentage changes average age at diagnosis from 1975–2016 by head and neck anatomic subsites.

Characteristics	<i>n</i> (%)	Mean Age at Diagnosis (SD)	<i>p</i> -value	Year range	APC (95% CI)	Average APC from 1975–2016 (95% CI)
Site			< 0.01			
Hypopharynx	7044 (5.9)	63.2 (10.4)		1975–2016	0.01 (−0.03, 0.05)	0.01 (−0.03, 0.05)
Larynx	33768 (28.4)	63.2 (10.9)		1975–1985 1985–2016	0.36 (0.21, 0.52) 0.04 (0.01, 0.07)	0.12 (0.08, 0.16)
Nasopharynx	4163 (3.5)	54.4 (15.1)		1975–2016	0.07 (0.00, 0.15)	0.07 (0.00, 0.15)
Oral Cavity	39178 (33.0)	64.1 (13.8)		1975–2016	0.05 (0.03, 0.06)	0.05 (0.03, 0.06)
Oropharynx	31702 (26.7)	60.3 (10.8)		1975–1996 1996–2002 2002–2016	0.00 (−0.06, 0.07) −0.88 (−1.43, −0.32) 0.37 (0.28, 0.45)	0.00 (−0.09, 0.09)
Sinonasal	2955 (2.5)	64.4 (13.5)		1975–1991 1991–2016	0.36 (0.06, 0.67) −0.18 (−0.33, −0.02)	0.03 (−0.11, 0.18)

Note: API/AIAN = Asian/Pacific Islander/American Indian/Alaska Native; APC = Annual Percentage Change.



**Figure S1.** Observed average age at diagnosis by year and Joinpoint regression models by head and neck anatomic subsite.

**Publisher’s Note:** MDPI stays neutral with regard to jurisdictional claims in published maps and institutional affiliations.



© 2020 by the authors. Licensee MDPI, Basel, Switzerland. This article is an open access article distributed under the terms and conditions of the Creative Commons Attribution (CC BY) license (<http://creativecommons.org/licenses/by/4.0/>).