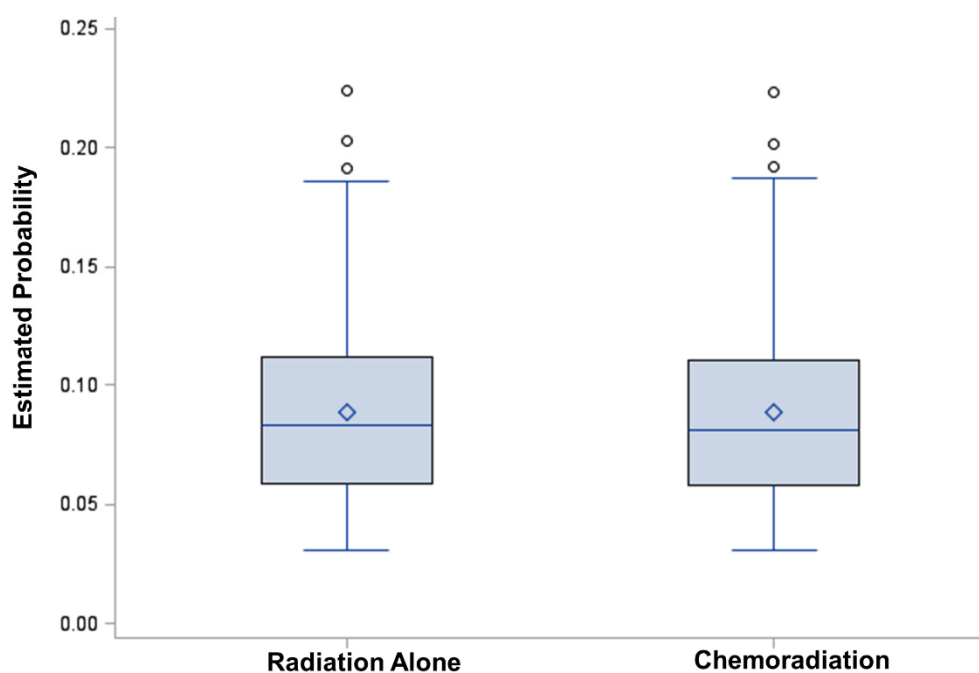


Article

# Stage I Squamous Cell Carcinoma of the Anus: Is Radiation Therapy Alone Sufficient Treatment?

Eric Miller, Ansel Nalin, Dayssy Diaz Pardo, Andrea Arnett, Laith Abushahin, Syed Husain, Ning Jin, Terence Williams, and Jose Bazan

Supplementary Materials:

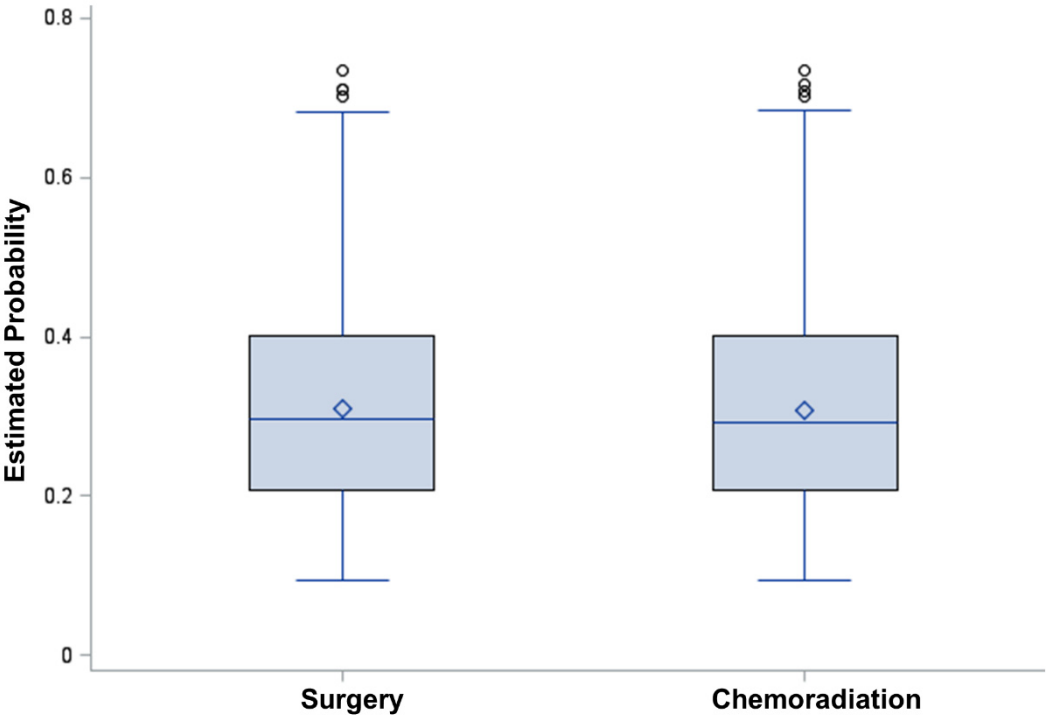


**Figure 1.** Distribution of propensity scores in the chemoradiation and radiation therapy alone cohorts.

**Table 1.** Patient characteristics and standardized-differences in the propensity-matched cohort of chemoradiation and radiation therapy alone.

<b>Characteristic</b>	<b>Chemoradiation (N=287) Number (%)</b>	<b>Radiation therapy alone (N=287) Number (%)</b>	<b>Standardized- differences</b>
<b>Age (years)</b>			
<50	58 (20.2)	59 (20.6)	0.0522
50-59	73 (25.4)	68 (23.7)	
60-69	60 (20.9)	65 (22.6)	
≥70	96 (33.5)	95 (33.1)	
<b>Gender</b>			0.0145
Female	183 (63.8)	181 (63.1)	
Male	104 (36.2)	106 (36.9)	
<b>Race</b>			0.0886
White	259 (90.2)	251 (87.5)	
Non-white	28 (9.8)	36 (12.5)	
<b>Charlson-Deyo score</b>			0.0385
0	236 (82.2)	232 (80.8)	
1	27 (9.4)	30 (10.5)	
2-3	24 (8.4)	25 (8.7)	
<b>Median income</b>			0.0073
≥\$46,000	100 (34.8)	101 (35.2)	
<\$46,000	187 (65.2)	186 (64.8)	
<b>Distance to facility, mi. (SD)</b>	16.8 (162.9)	19.8 (38.5)	0.0629
<b>Facility type</b>			0.0229
Academic	84 (29.3)	87 (30.3)	
Non-academic	203 (70.7)	200 (69.7)	
<b>Tumor Size</b>			0.0425
≤1 cm	73 (25.4)	77 (26.8)	
>1-2 cm	127 (44.3)	128 (44.6)	
Unknown Size	87 (30.3)	82 (28.6)	

mi.: miles. SD: standard deviation.

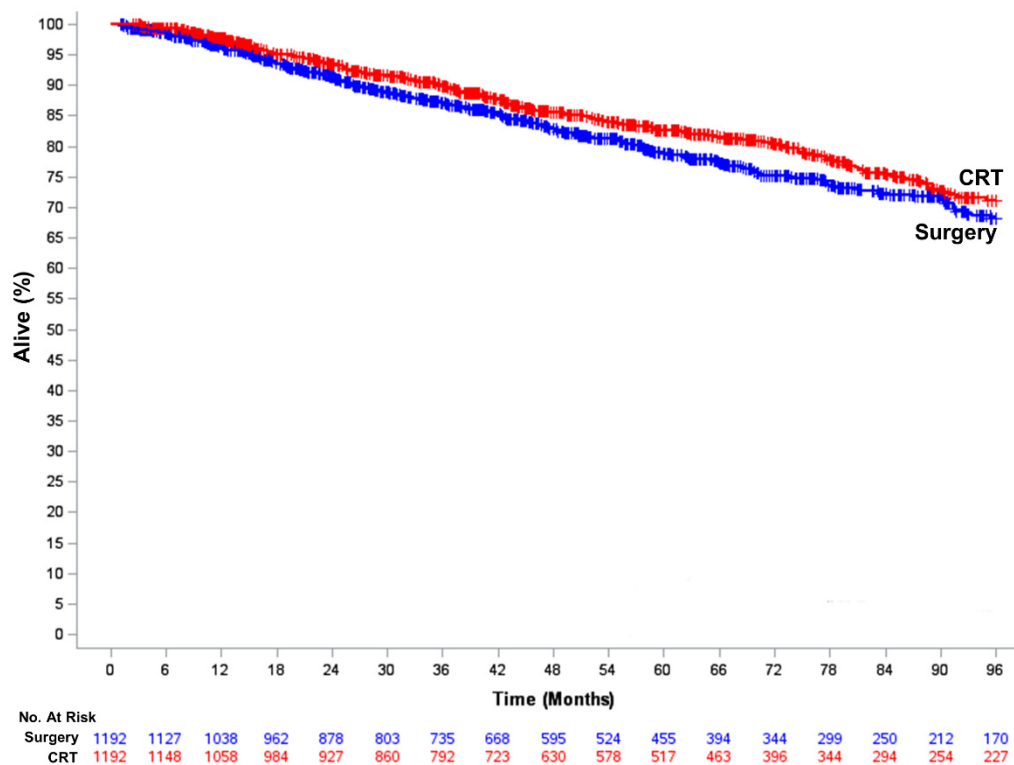


**Figure 2.** Distribution of propensity scores in the chemoradiation and the wide local excision (surgery) alone cohorts.

**Table 2.** Patient characteristics and standardized-differences in the propensity-matched cohort of chemoradiation and wide local excision.

<b>Characteristic</b>	<b>Chemoradiation (N=1192) Number (%)</b>	<b>Surgery alone (N=1192) Number (%)</b>	<b>Standardized- differences</b>
<b>Age (years)</b>			
<50	318 (26.7)	304 (25.5)	0.0413
50-59	343 (28.8)	349 (29.3)	
60-69	232 (19.5)	223 (18.7)	
≥70	299 (25.0)	316 (26.5)	
<b>Gender</b>			0.0254
Female	672 (56.4)	687 (57.6)	
Male	457 (43.6)	505 (42.4)	
<b>Race</b>			0.0119
White	1022 (85.7)	1017 (85.3)	
Non-white	107 (14.3)	175 (14.7)	
<b>Charlson-Deyo score</b>			0.0390
0	943 (79.1)	938 (78.7)	
1	132 (11.1)	145 (12.2)	
2-3	117 (9.8)	109 (9.1)	
<b>Median income</b>			0.0102
≥\$46,000	492 (41.3)	498 (41.8)	
<\$46,000	700 (58.7)	694 (58.2)	
<b>Distance to facility, mi. (SD)</b>	23.3 (106.3)	22.0 (79.4)	0.0046
<b>Facility type</b>			0.0265
Academic	401 (33.6)	416 (34.9)	
Non-academic	791 (66.4)	776 (65.1)	

mi.: miles. SD: standard deviation.



**Figure 3.** Overall survival of propensity score-matched patients treated with definitive chemoradiation compared to those receiving wide local excision (surgery) alone. Curves represent actual survival as estimated by the Kaplan-Meier method.