

Supplementary Figures and Tables

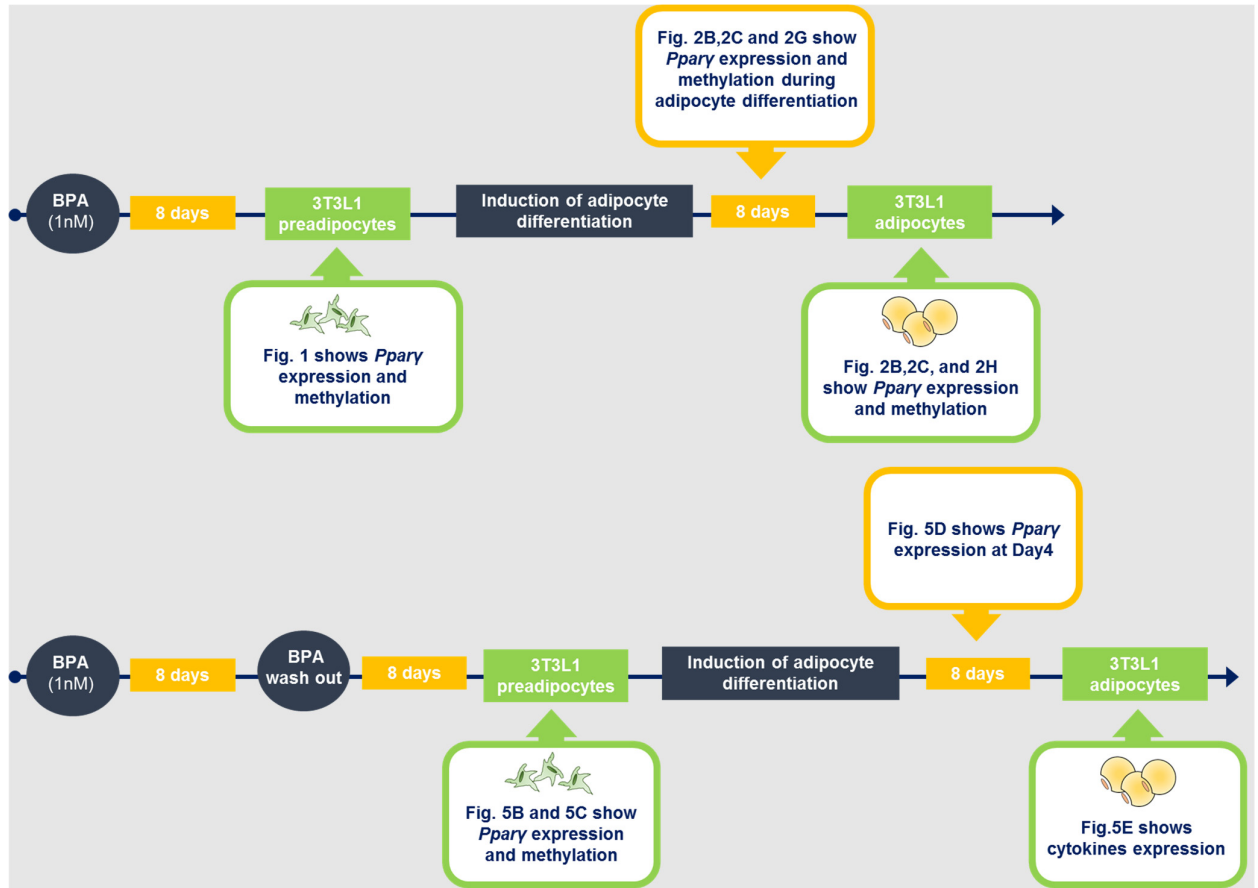
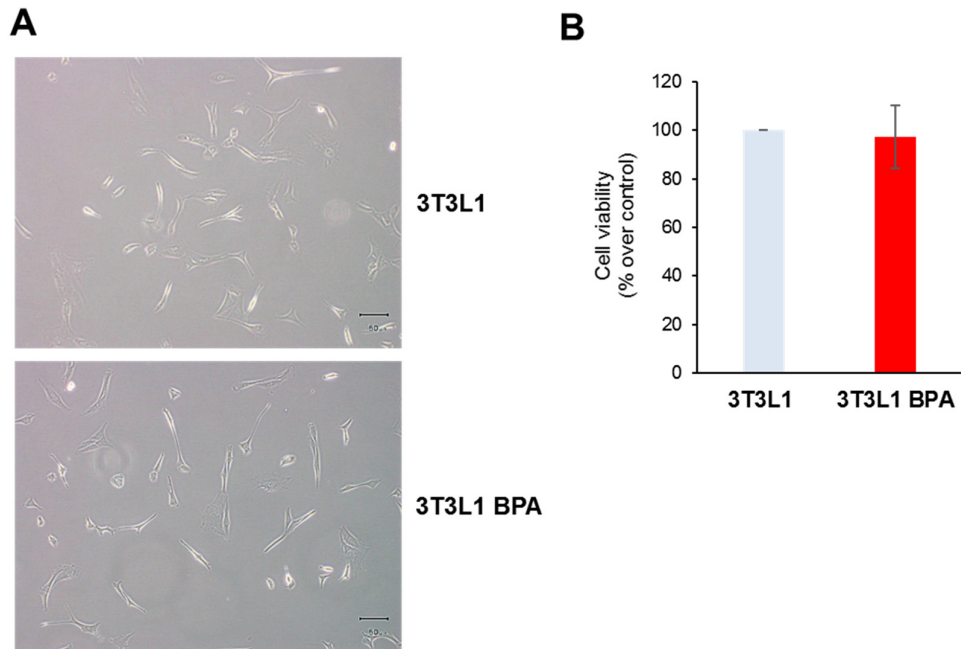
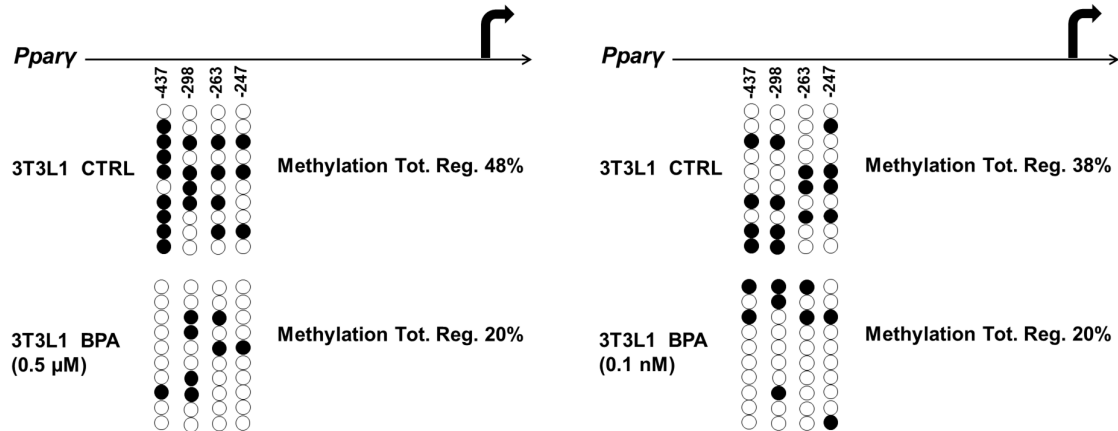


Figure S1. A schematic flowchart of the experimental design and treatments.



**Figure S2.** Cell morphology and cell viability of the *3T3L1* exposed to BPA. (A) Representative microphotographs of the *3T3L1* cells pretreated with 1 nM BPA or vehicle for 8 days. 10X magnification; scale bars, 50 $\mu$ m. (B) Cell viability was assessed by the MTT assay. The percentage of survival was calculated as the absorbance ratio of treated to untreated cells. The data presented are the mean  $\pm$  SD from three replicate wells, replicated three times.



**Figure S3.** BPA exposure effects on DNA methylation of the *Ppar $\gamma$*  promoter in *3T3L1* preadipocytes. Bisulfite sequencing analysis for DNA methylation assessment of the *Ppar $\gamma$*  promoter in *3T3L1* cells exposed to BPA (0.5  $\mu$ M and 0.1 nM).

**Table S1.** A list of 27 predicted microRNAs targeting the 3'-UTR of *Ppar $\gamma$*  gene obtained from the miRDB and Targetscan online databases.

microRNAs Targeting <i>Ppar<math>\gamma</math></i> Gene
mmu-miR-27b-3p, mmu-miR-669k-3p, mmu-miR-27a-3p, mmu-miR-669h-3p, mmu-miR-130c, mmu-miR-130a-3p, mmu-miR-6341, mmu-miR-301b-3p, mmu-miR-301a-3p, mmu-miR-130b-3p, mmu-miR-721, mmu-miR-6389, mmu-miR-6986-3p, mmu-miR-7236-5p, mmu-miR-5624-5p, mmu-miR-3473g, mmu-miR-673-5p, mmu-miR-6985-3p, mmu-miR-128-3p, mmu-miR-340-5p, mmu-miR-6539, mmu-miR-590-3p, mmu-miR-338-5p, mmu-miR-335-3p, mmu-miR-6951-3p, mmu-miR-7116-3p, mmu-miR-760-5p