

Supplemental material

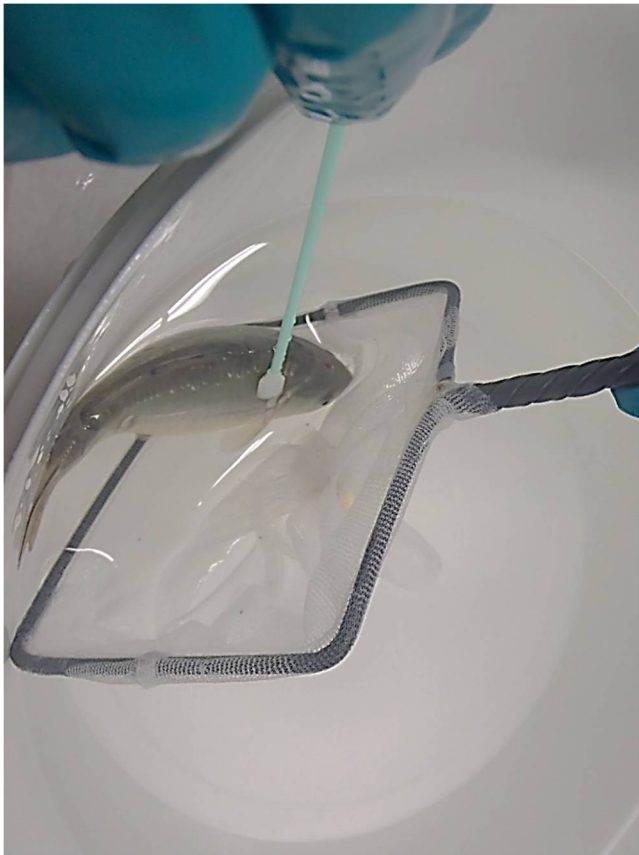


Figure S1. Example of common carp skin swabbing procedure.

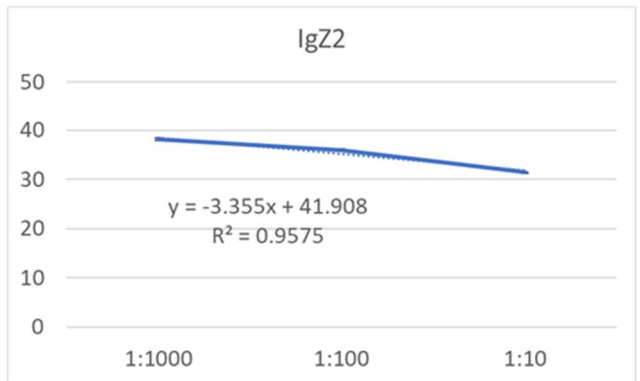
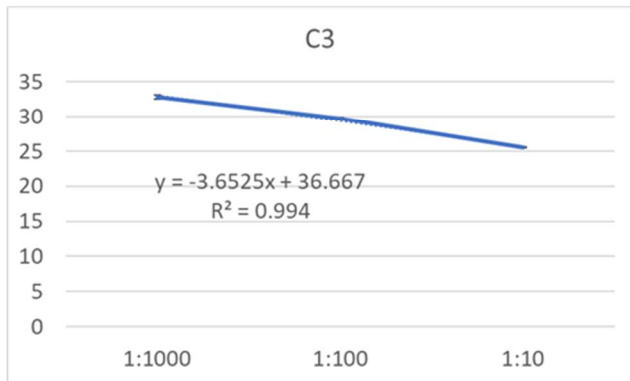
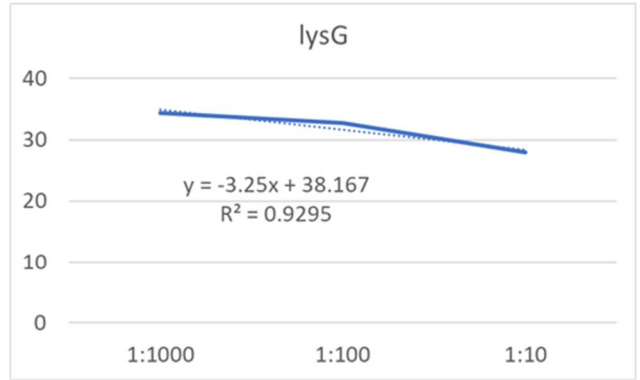
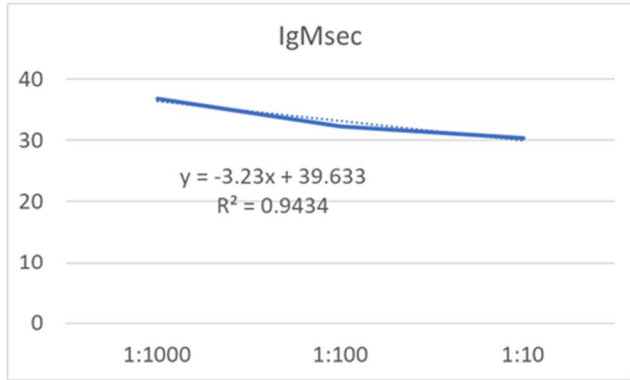
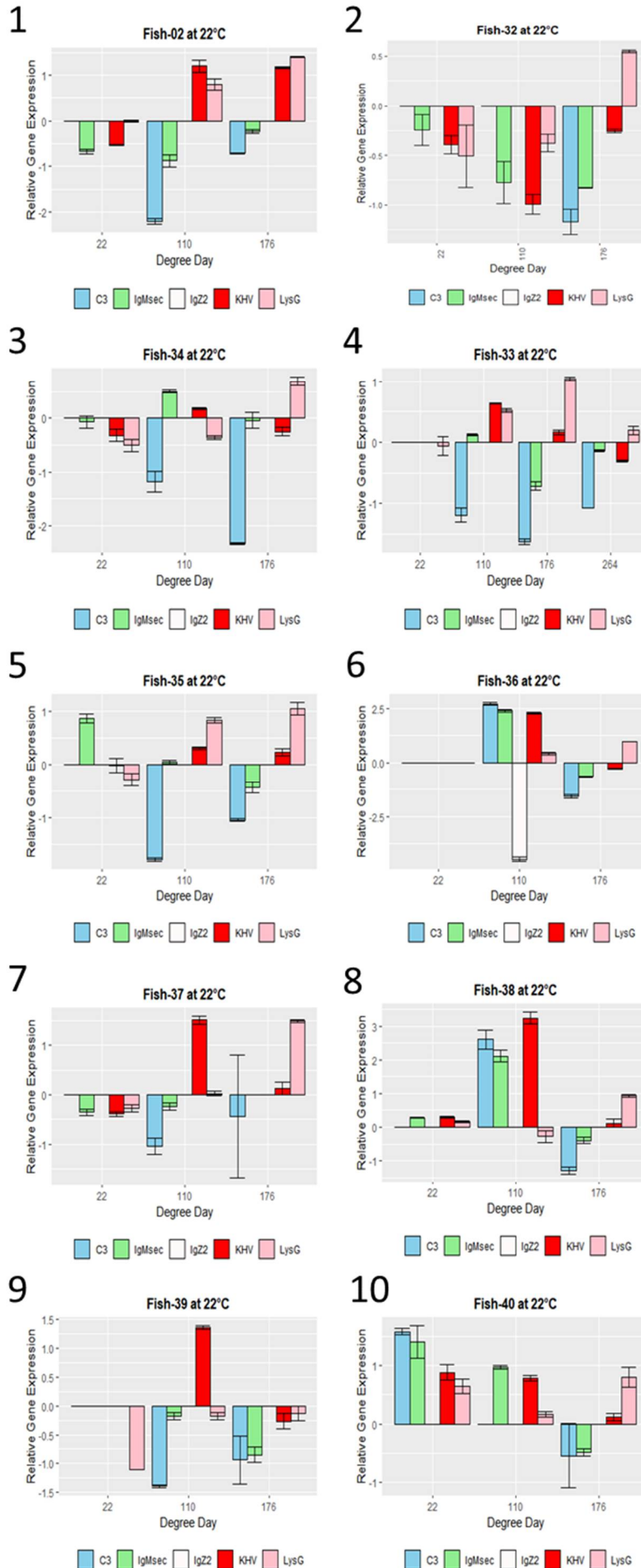
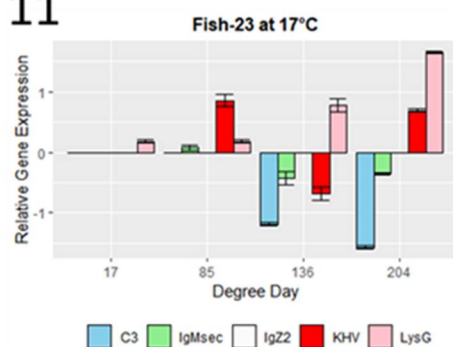


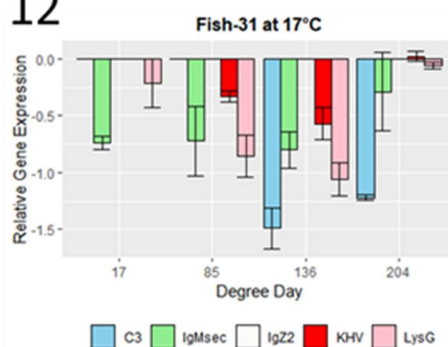
Figure S2. Taqman qPCR efficiency curves. Positive cDNA dilutions 1:10. 1:100 and 1:1000.



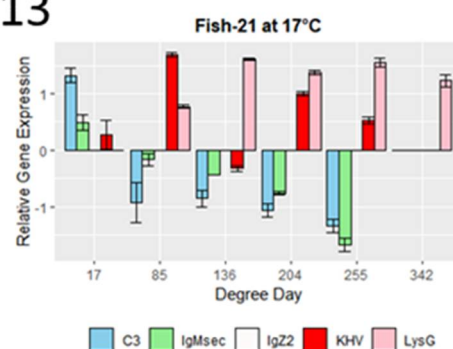
11



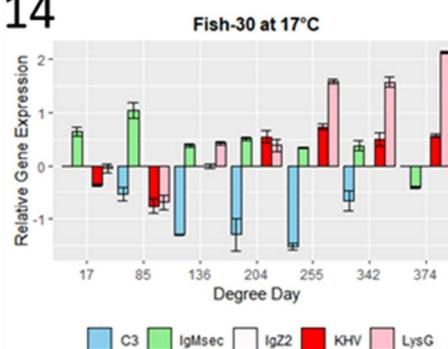
12



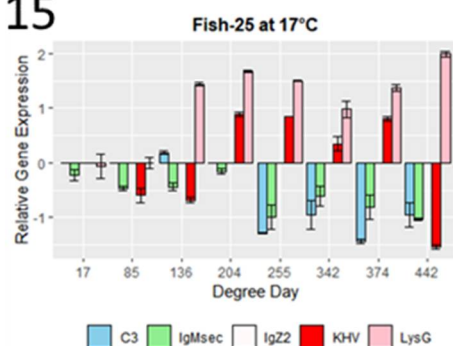
13



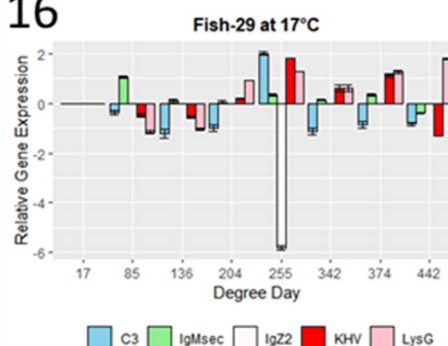
14



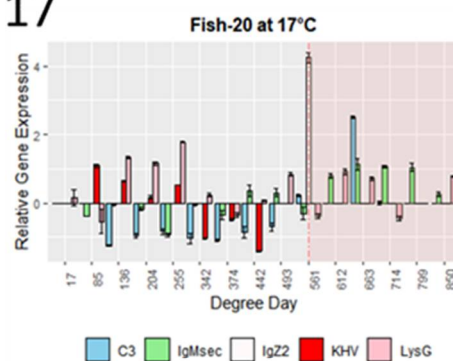
15



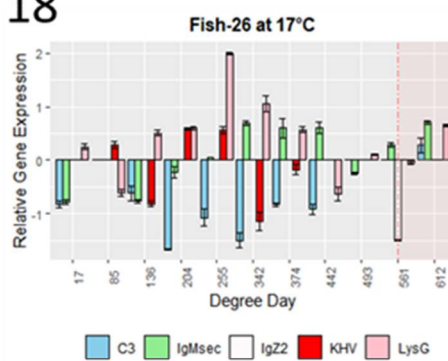
16



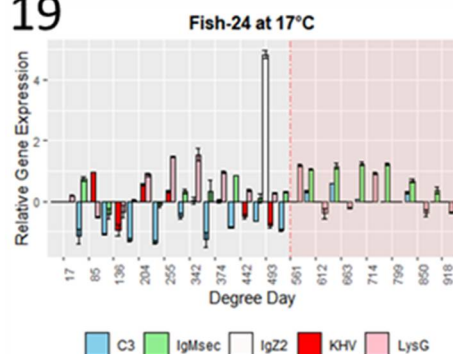
17



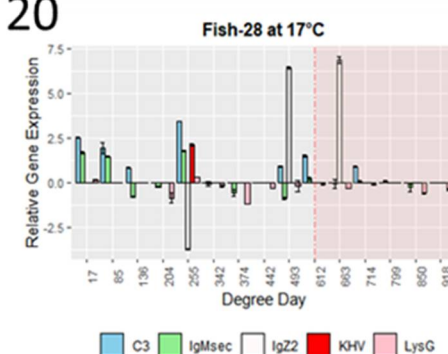
18



19



20



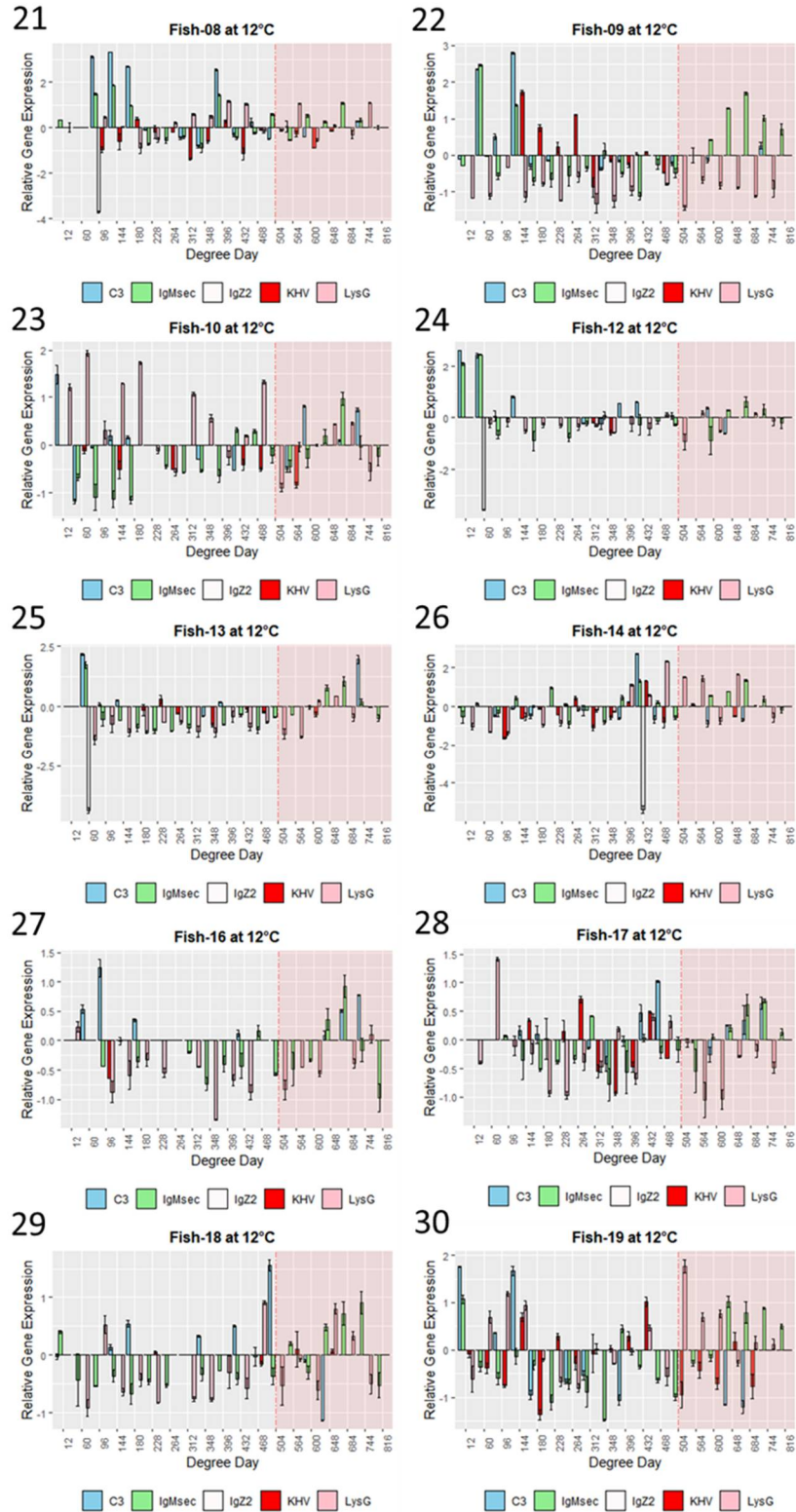


Figure S3. Relative gene expression over time in common carp skin swabs exposed to koi herpesvirus (KHV). Sampling days were expressed as degree days (DD) to compare groups at different temperatures (12, 17, and 22 °C). *C3*: complement *c3-h1*; *IgMsec*: immunoglobulin M heavy chain secretory protein; *IgZ2*: immunoglobulin Z subclass 2 heavy chain; *KHV*: *KHV orf90*; *lysG*: *Lysozyme g*. Graphs from 1 to 10: fish infected at 22°C; graphs from 11 to 20: fish infected at 17°C and survivors exposed to heat stress at 500 DD; graphs from 21 to 30: fish infected at 12°C and survivors exposed to heat stress at 500 DD. Heat stress indicates an increase in temperature to 22°C.

