

Automatic Grading of Individual Knee Osteoarthritis Features in Plain Radiographs using Deep Convolutional Neural Networks

Aleksei Tiulpin^{1,2,3,*} and Simo Saarakkala^{1,2}

¹Research Unit of Medical Imaging, Physics and Technology, University of Oulu, Oulu, Finland.

²Department of Diagnostic Radiology, Oulu University Hospital, Oulu, Finland

³Ailean Technologies Oy, Oulu, Finland

*aleksei.tiulpin@oulu.fi

Supplementary data

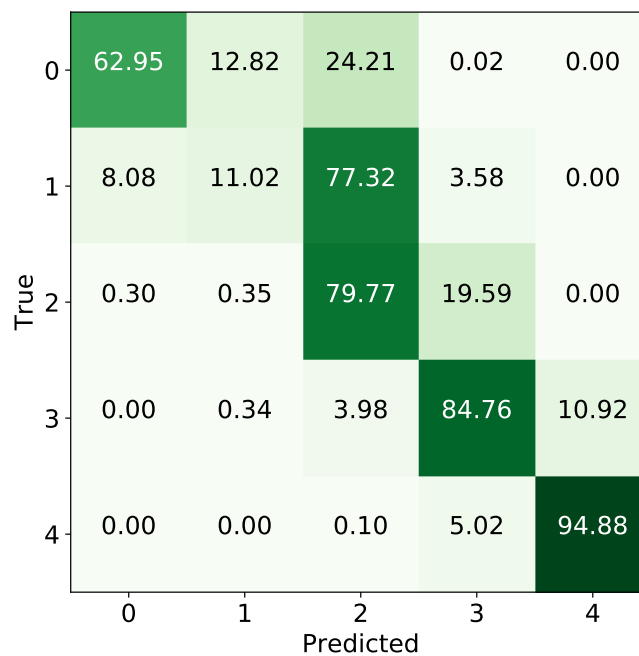


Figure S1. Confusion matrix for Kellgren-Lawrence (KL) grading. The numbers indicate percentages.

Table S1. Cross-validation results (out of fold): balanced accuracy (%) for each of the trained tasks on out-of-fold sample (OAI dataset). Best results task-wise are highlighted in bold. We selected two best models for through evaluation: SE-Resnet-50[†] and SE-ResNext50-32x4d[‡]. We trained these models from scratch (*) and also with transfer learning, but w/o the KL-grade (**). Finally, in the last row, we demonstrate the results for the ensembling of these models. L and M indicate lateral and medial compartments, FO and TO indicate femoral and tibial osteophytes and JSN indicates joint space narrowing, respectively. KL indicates the Kellgren-Lawrence grade.

Backbone	KL	FO		TO		JSN	
		L	M	L	M	L	M
Resnet-18	67.32	53.19	61.08	60.37	62.38	75.74	77.92
Resnet-34	66.93	50.91	60.11	61.86	62.13	73.66	79.09
Resnet-50	66.99	52.35	62.57	61.93	64.40	73.42	78.95
SE-Resnet-50 [†]	67.77	53.96	62.54	63.22	65.24	76.13	78.22
SE-ResNext50-32x4d [‡]	67.08	55.37	63.31	64.55	65.14	75.05	78.65
SE-Resnet-50*	65.07	48.58	54.64	56.14	56.44	75.86	78.56
SE-ResNext50-32x4d*	64.31	49.25	55.11	56.04	56.76	75.58	78.89
SE-Resnet-50**	-	54.97	63.28	64.00	64.17	73.39	79.65
SE-ResNext50-32x4d**	-	55.40	63.84	66.26	65.00	74.81	78.90
Ensemble ^{†‡}	68.01	55.15	63.86	64.83	65.70	76.73	79.03

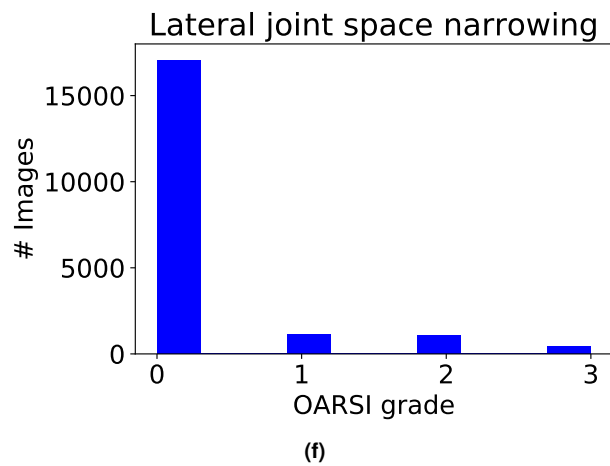
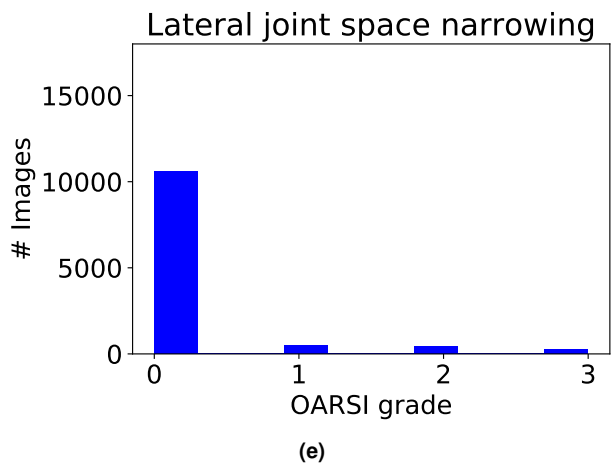
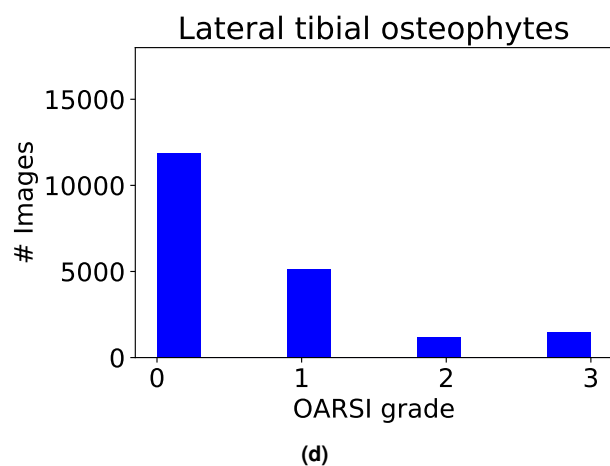
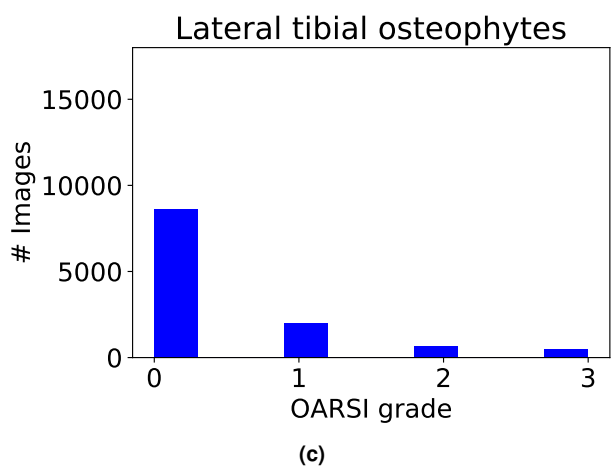
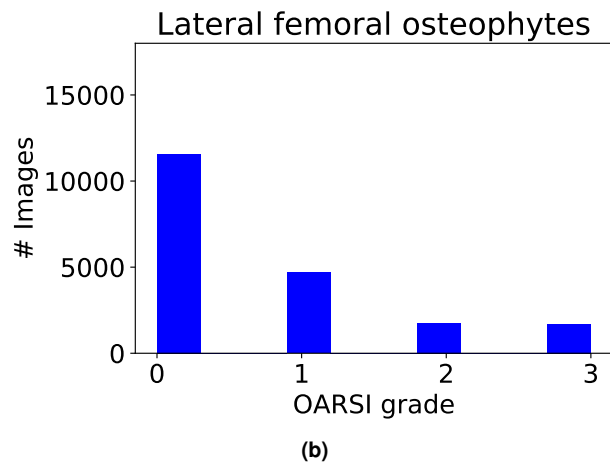
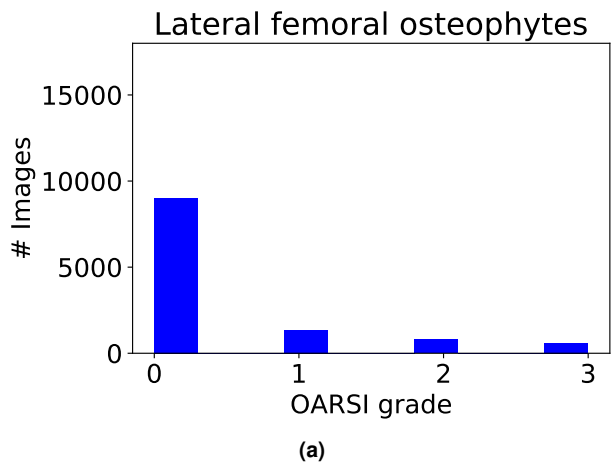


Figure S2. Visual representation of lateral OARSI grades distributions in MOST (S2a, S2c, S2e) and OAI (S2b, S2d, S2f) datasets.

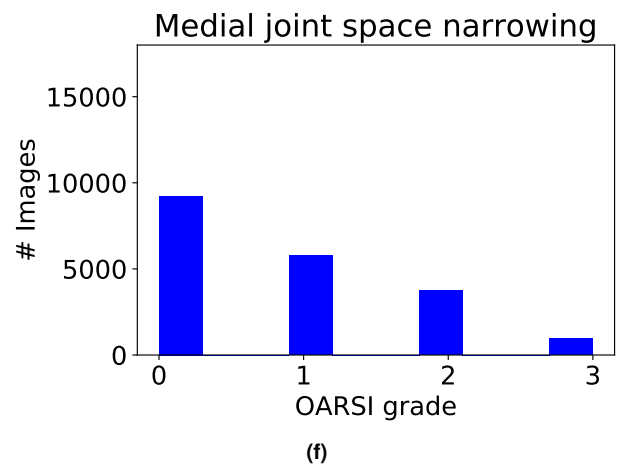
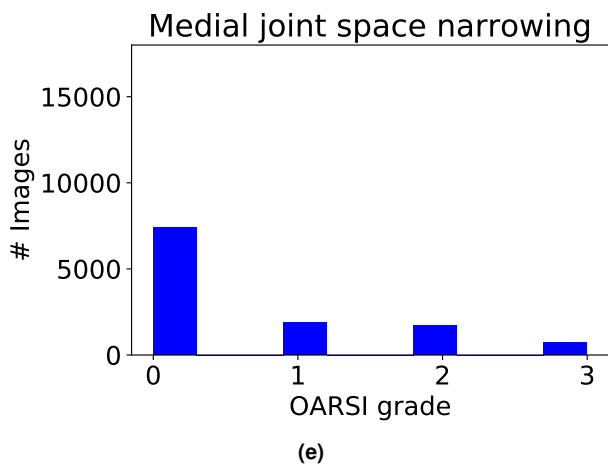
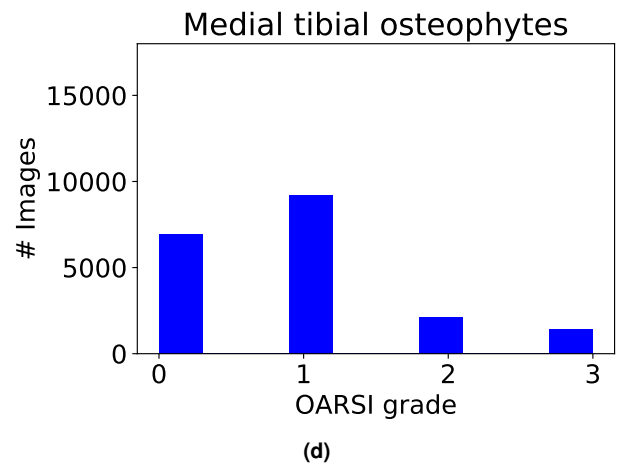
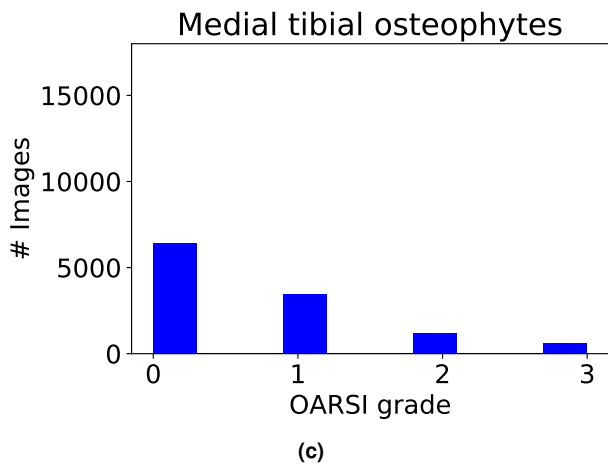
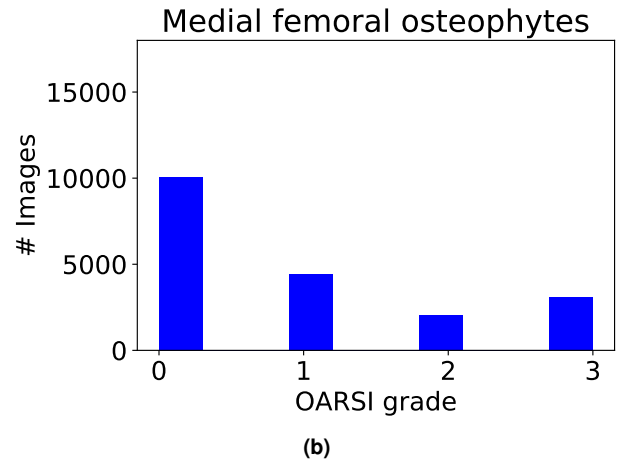
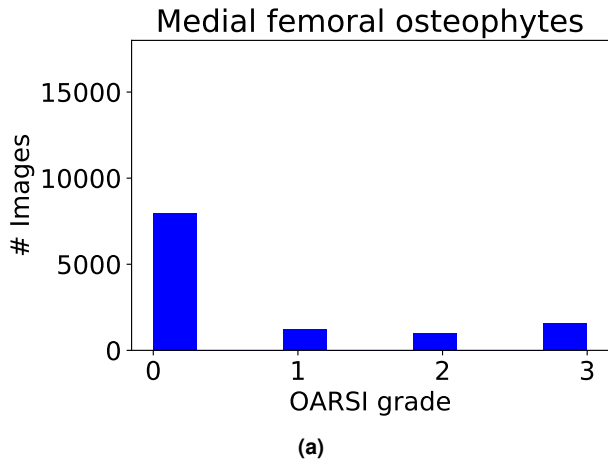


Figure S3. Visual representation of lateral OARSI grades distributions in MOST (S3a, S3c, S3e) and OAI (S3b, S3d, S3f) datasets.