

Supplementary Materials:

Modulation of de novo Lipogenesis Improves Response to Enzalutamide Treatment in Prostate Cancer

Mohamed Amine Lounis, Benjamin Péant, Kim Leclerc-Desaulniers, Dwaipayan Ganguli, Caroline Daneault, Matthieu Ruiz, Amina Zoubeidi, Anne-Marie Mes-Masson and Fred Saad

Table S1. List of primary antibodies.

Name	Cat Number	Isotype	Company	Dilution
SCD1	Ab39969	Rabbit IgG	Abcam	1:1000
PERK	#5683	Rabbit IgG	Cell signaling	1:1000
CHOP	#2895	Mouse IgG	Cell signaling	1:1000
IRE α	#3294	Rabbit IgG	Cell signaling	1:1000
Cleaved PARP	#5625	Rabbit IgG	Cell signaling	1:1000
pPDK1 (ser241)	#3438	Rabbit IgG	Cell signaling	1:1000
PDK1 (D4Q4D)	#13037	Rabbit IgG	Cell signaling	1:1000
pAKT (ser473)	#4060	Rabbit IgG	Cell signaling	1:1000
AKT	#3685	Rabbit IgG	Cell signaling	1:1000
β -ACTIN	ab8226	Mouse IgG	Abcam	1:5000

Table S2. List of primers.

Name	Forward Sequence	Reverse Sequence
SREBF1	5'-GCCCTGTAAACGACCACTG-3'	5'-CAGCGAGTCTGCCTTGATG-3'
ACC	5'-ATGTCTGGCTTGACCTAGTA-3'	5'-CCCCAAAGCGAGTAACAAATTCT-3'
FASN	5'-AAGGACCTGTCTAGGTTTGATGC-3'	5'-TGGCTTCATAGGTGACTTCCA-3'
SCD	5'-TCTAGCTCCTATACCACCACCA-3'	5'-TCGTCTCCAACCTATCTCCTCC-3'
ELVOL6	5'-AACGAGCAAAGTTTGAAGTGG-3'	5'-TCGAAGAGCACCGAATATACTGA-3'
ATF4	5'-ATGACCGAAATGAGCTTCCTG-3'	5'-GCTGGAGAACCCATGAGG-3'
ATF3	5'-CCTCTGCGCTGGAATCAGTC-3'	5'-TCTTTCTCGTCGCCTCTTTT-3'
GRP78	5'-CATCACGCCCTCCTATGTCG-3'	5'-CGTCAAAGACCGTGTCTCG-3'
XBP1	5'-CCCTCCAGAACATCTCCCAT-3'	5'-ACATGACTGGGTCCAAGTTGT-3'
CHOP	5'-GGAAACAGAGTGGTCATTCCC-3'	5'-CTGCTTGAGCCGTTCACTTC-3'
β -Actin	5'-CATGTACGTTGCTATCCAGGC-3'	5'-CTCCTTAATGTCACGCACGAT-3'

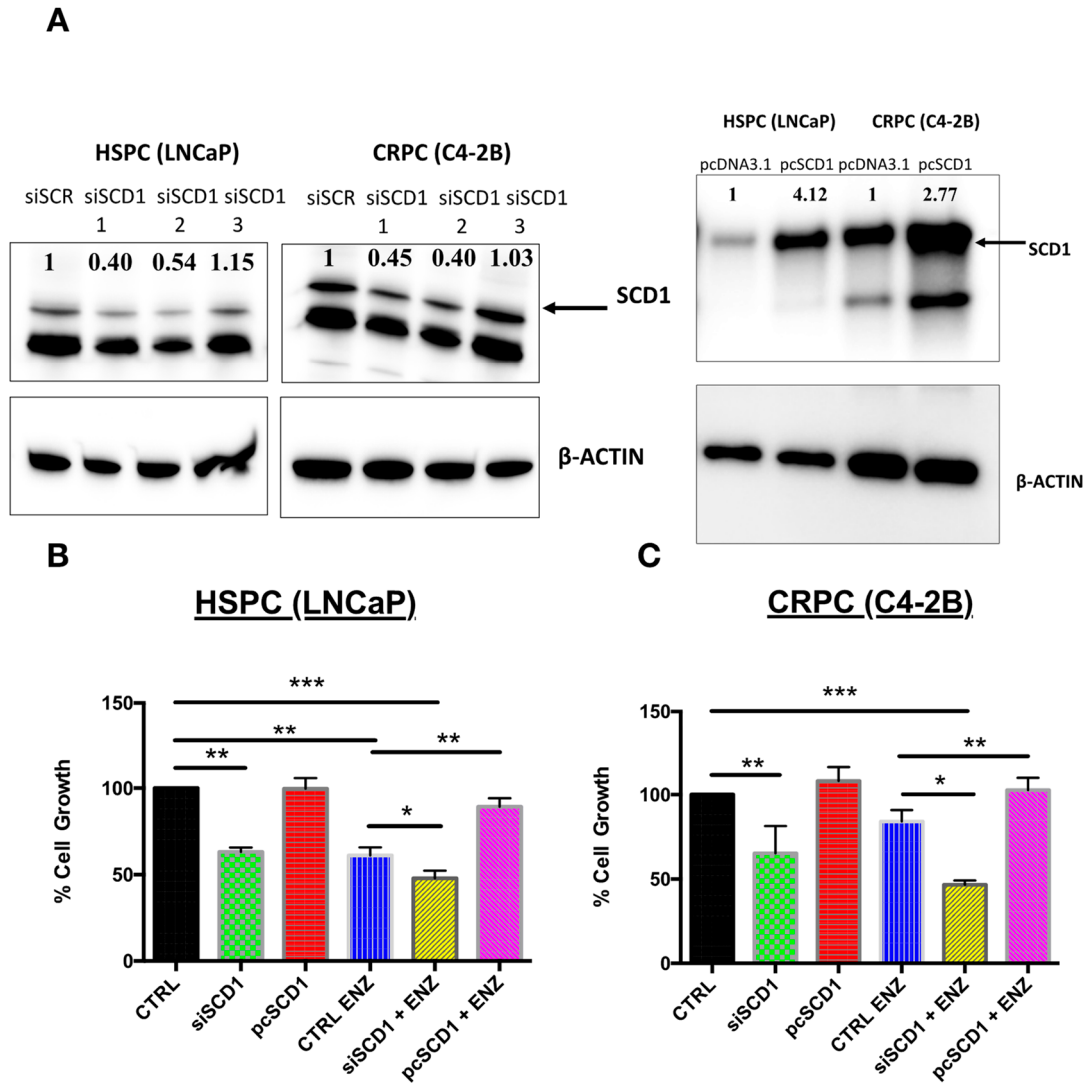


Figure S1. Inhibition of SCD1 using siRNA in combination with ENZ affects significantly the proliferation of PC cells. (A) Western blot analyses of SCD1 protein from HSPC (LNCaP) and CRPC (C4-2B) cells transfected with SCD1 siRNAs (siSCD1), siSramble, (Left panel) and with pcDNA SCD1 (pcSCD1) or pcDNA vector (Right panel). Proliferation of LNCaP (B) and C4-2B (C) cells transfected with SCD1 (siSCD1), siSramble, pcDNA SCD1 (pcSCD1) or pcDNA vector in absence or in presence of 10 μ M ENZ after 3 days of treatment. Data represent the mean \pm SD of three independent experiments. Data were analyzed using the one-way ANOVA test. * $p < 0.05$, ** $p < 0.01$, and *** $p < 0.001$.

Figure 2D

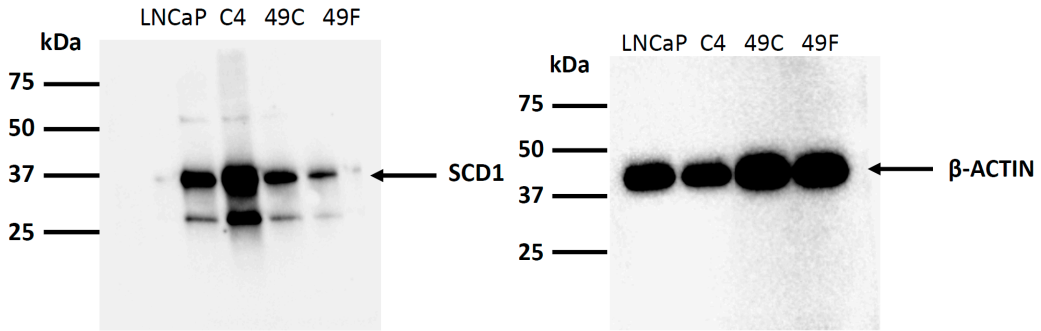


Figure 3D

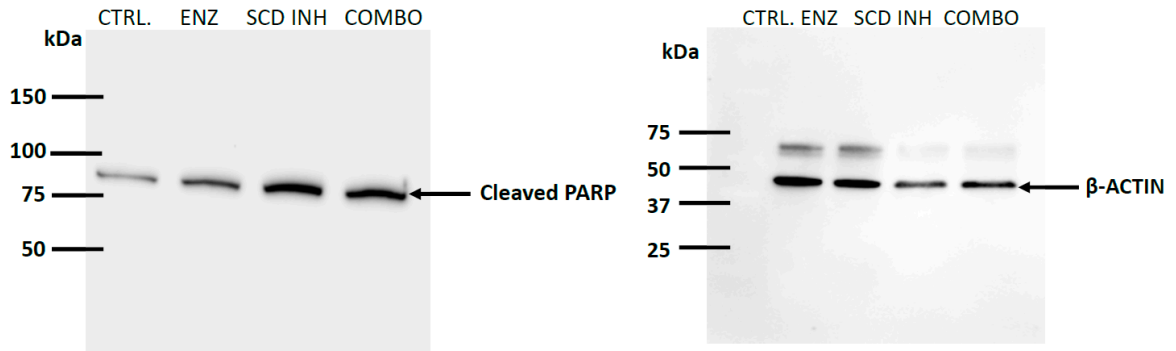


Figure 3E

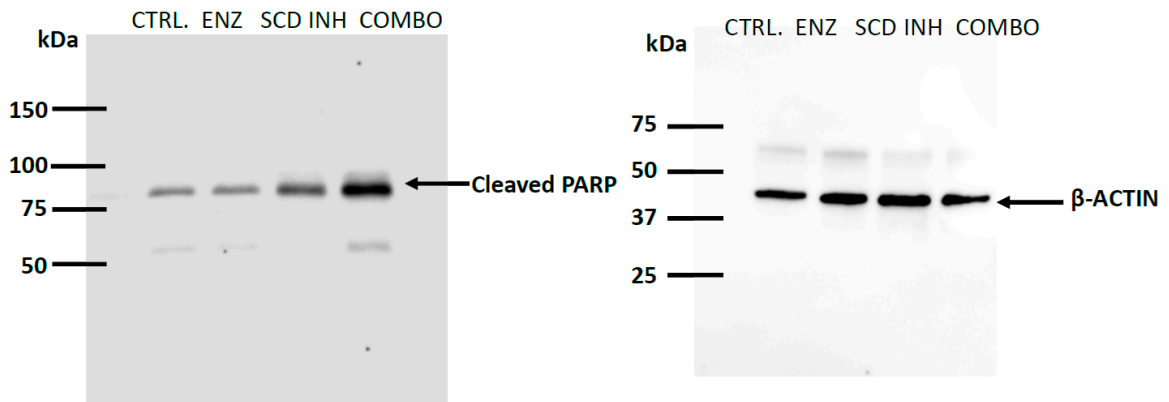


Figure S1

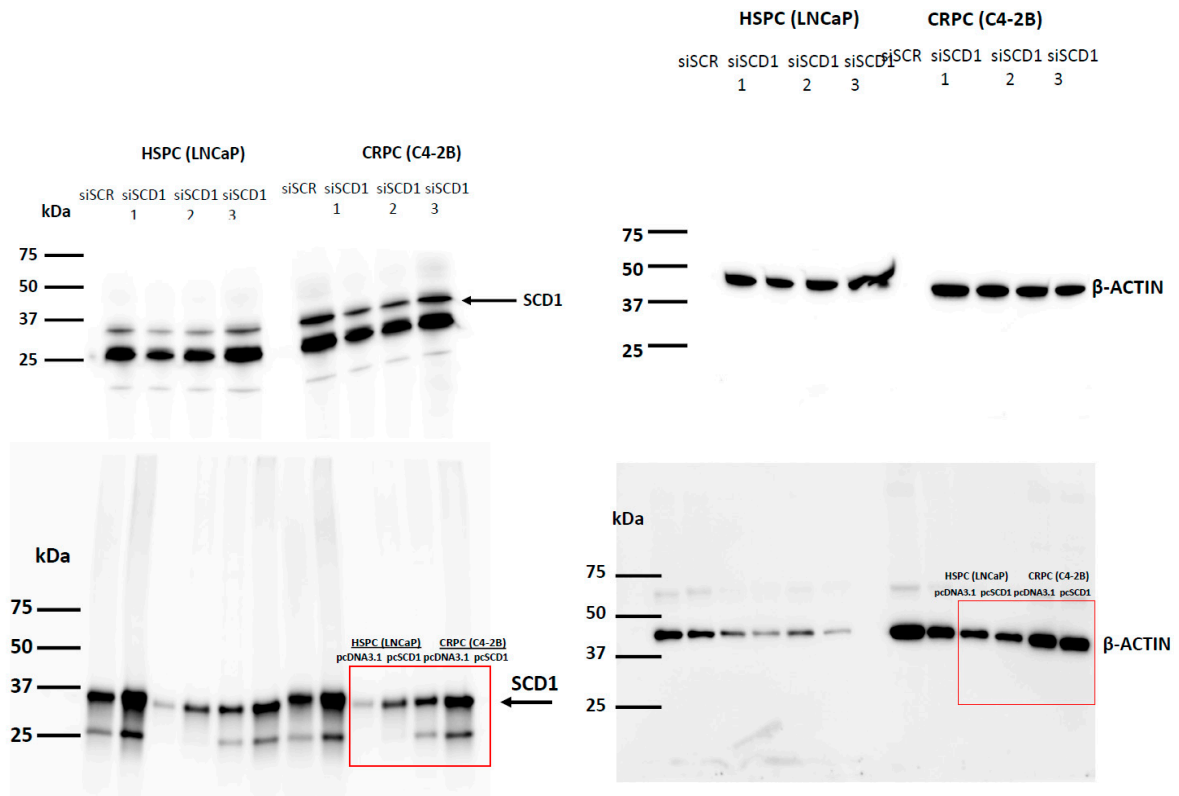


Figure 4A

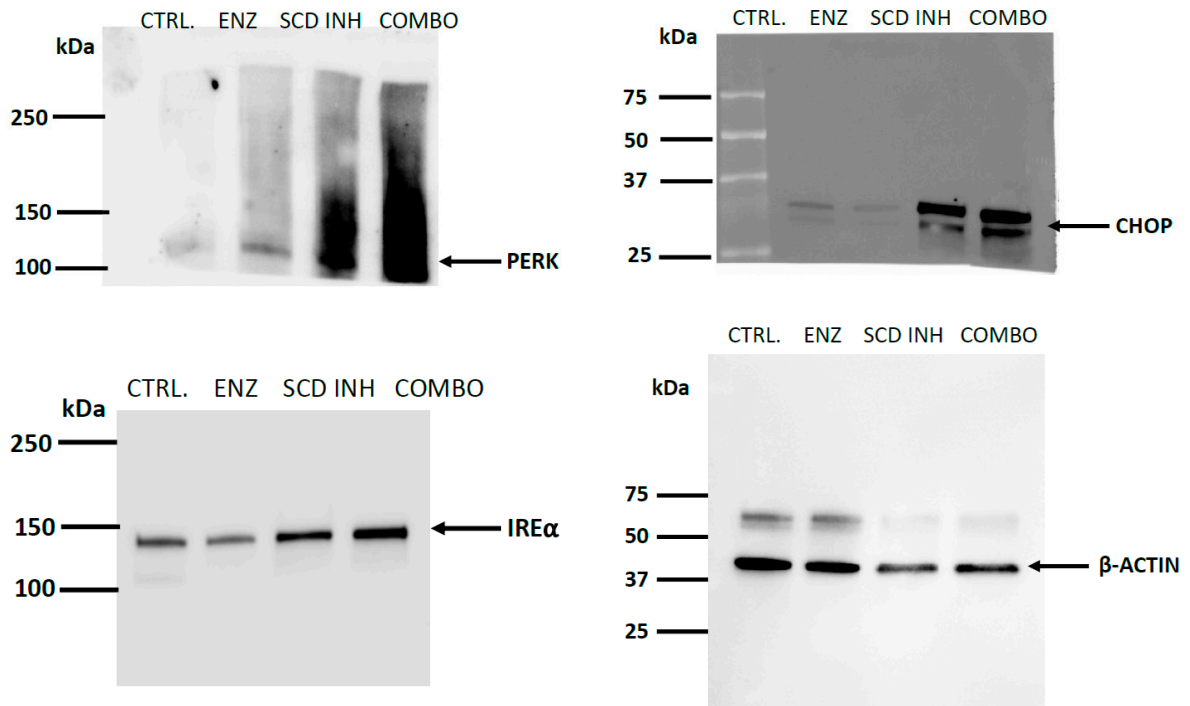


Figure 4B

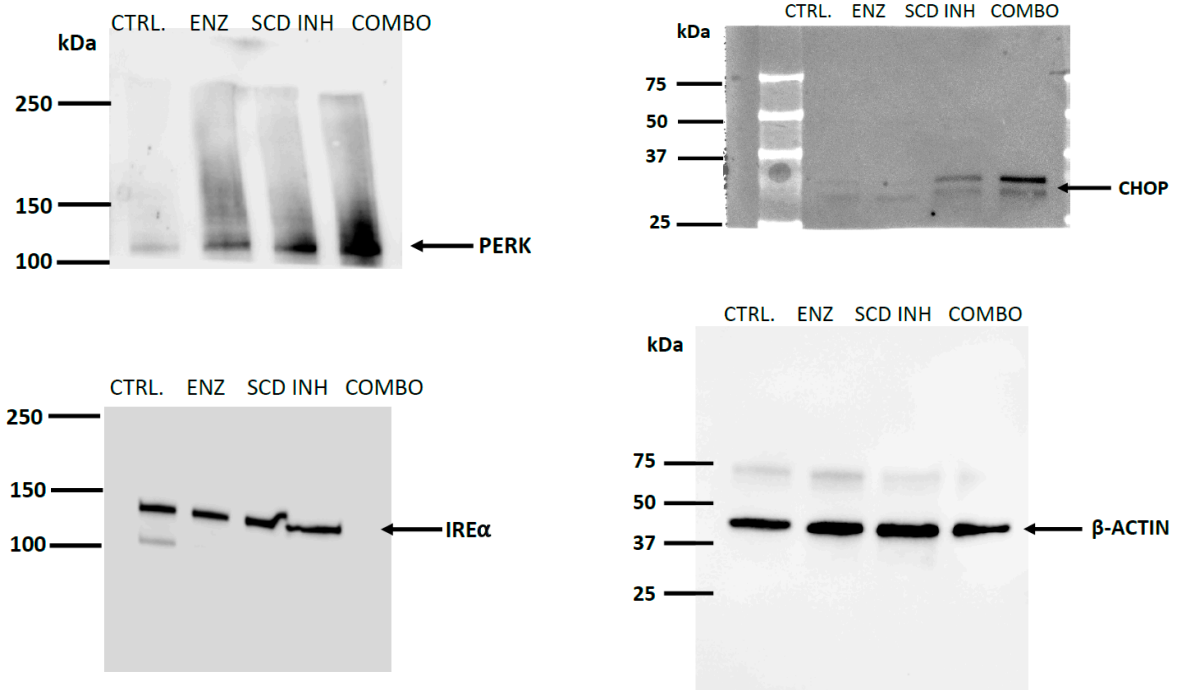


Figure 5A-B

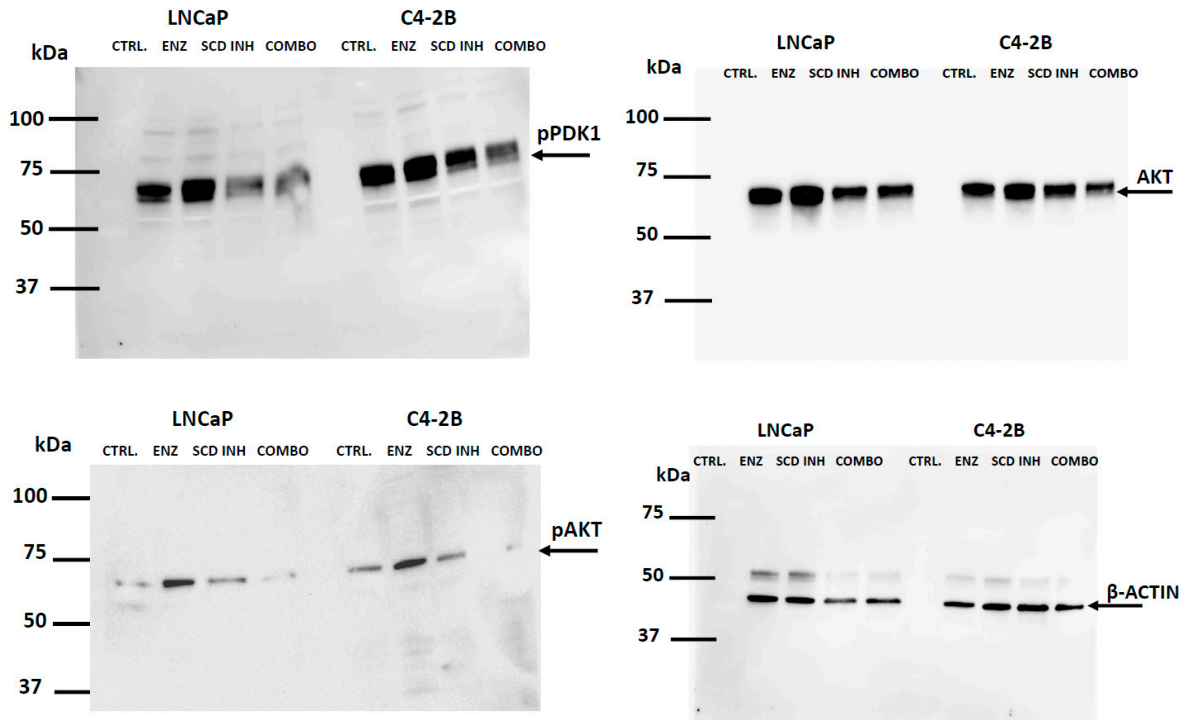


Figure 5C

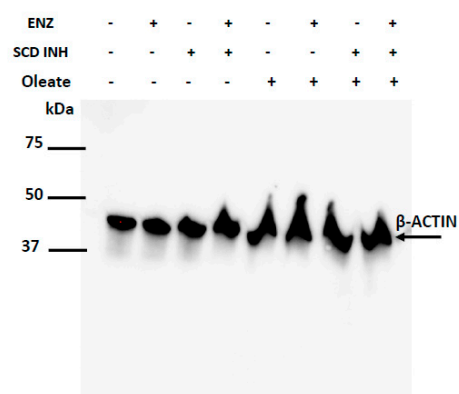
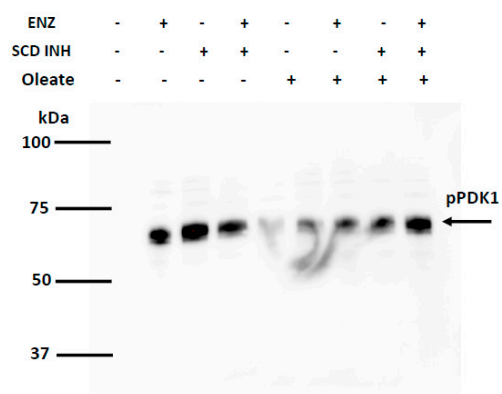
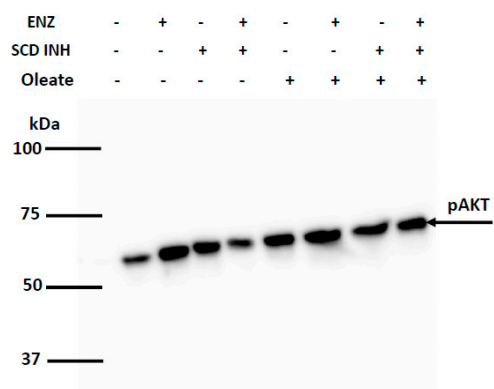
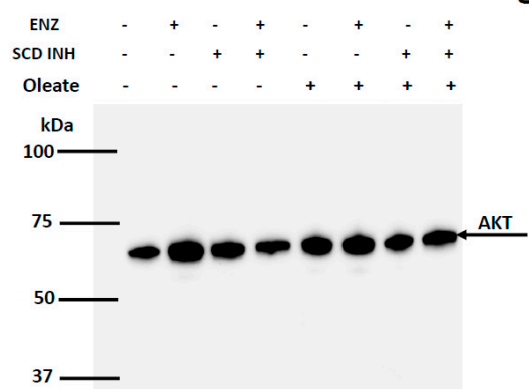
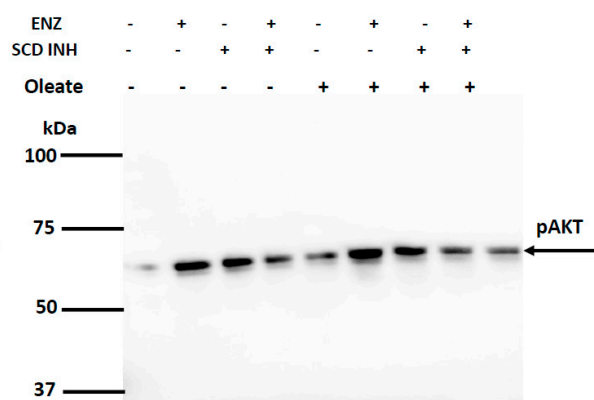
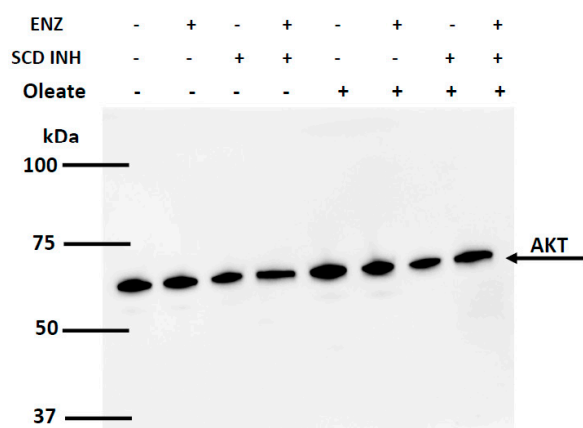


Figure 5D



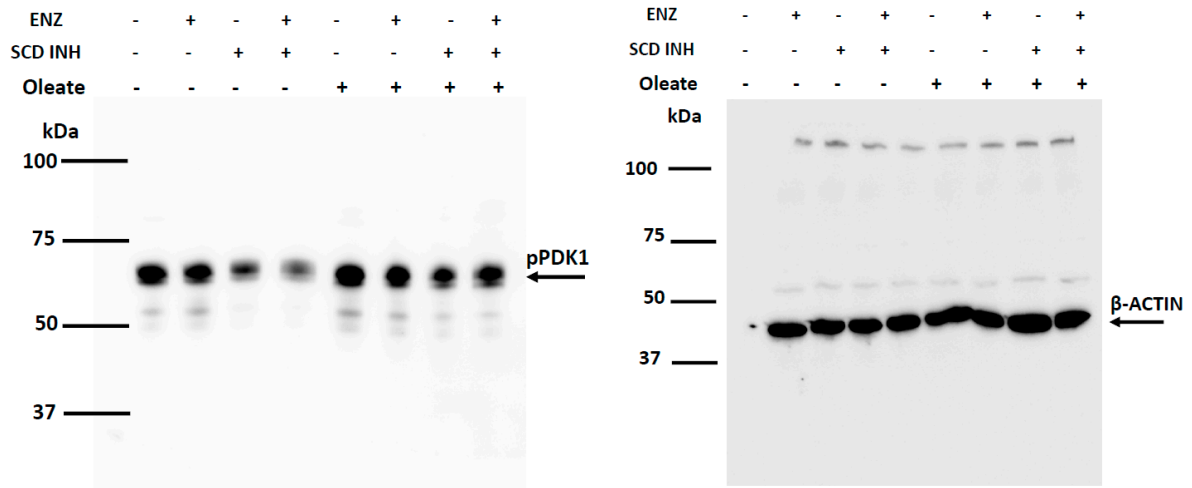


Figure 6C

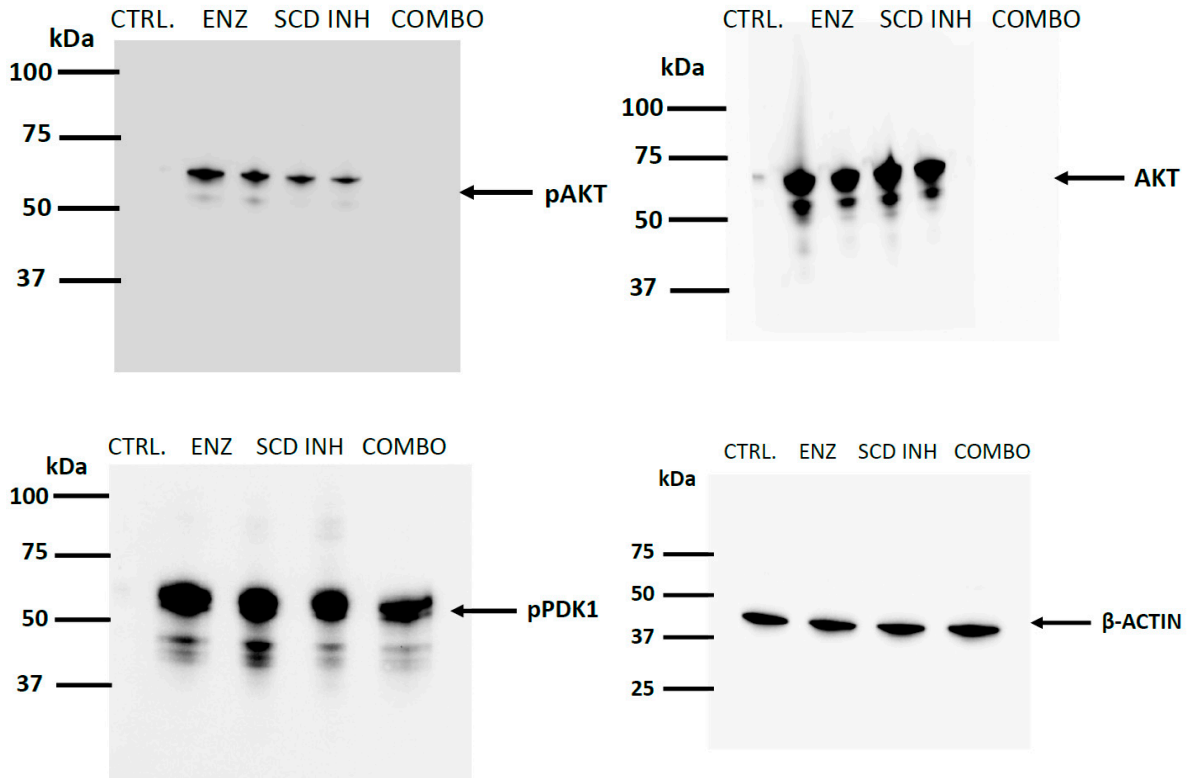


Figure S2. The whole blots.



© 2020 by the authors. Licensee MDPI, Basel, Switzerland. This article is an open access article distributed under the terms and conditions of the Creative Commons Attribution (CC BY) license (<http://creativecommons.org/licenses/by/4.0/>).