

Figure A1
Immunofluorescence from 1 day post 18 Gy. Scale bar 50 μm .

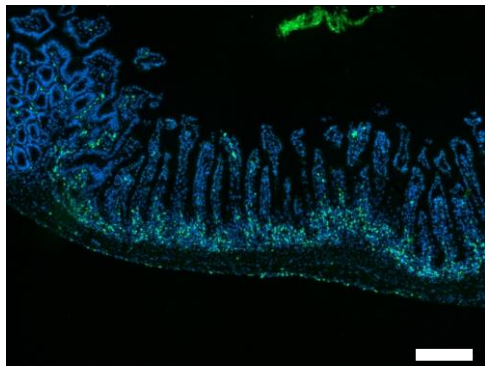


Figure A2
Myeloperoxidase immunofluorescence 3.5 days post-IR showing clear demarcation between irradiated and unirradiated intestine. Scale bar 200 μm

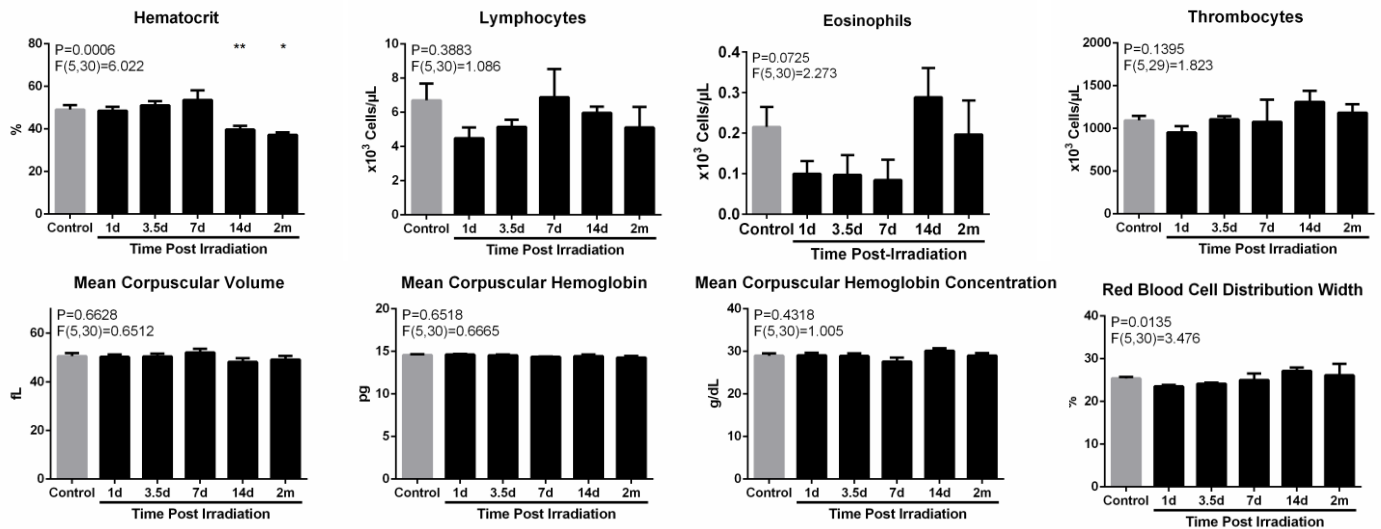


Figure A3
Additional parameters from complete blood count analysis post-IR with 18 Gy.

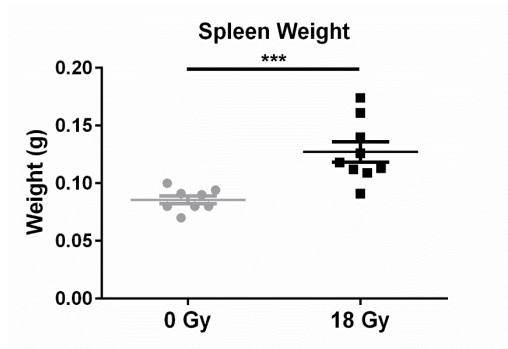


Figure A4
Spleen weight 14 days post-IR.

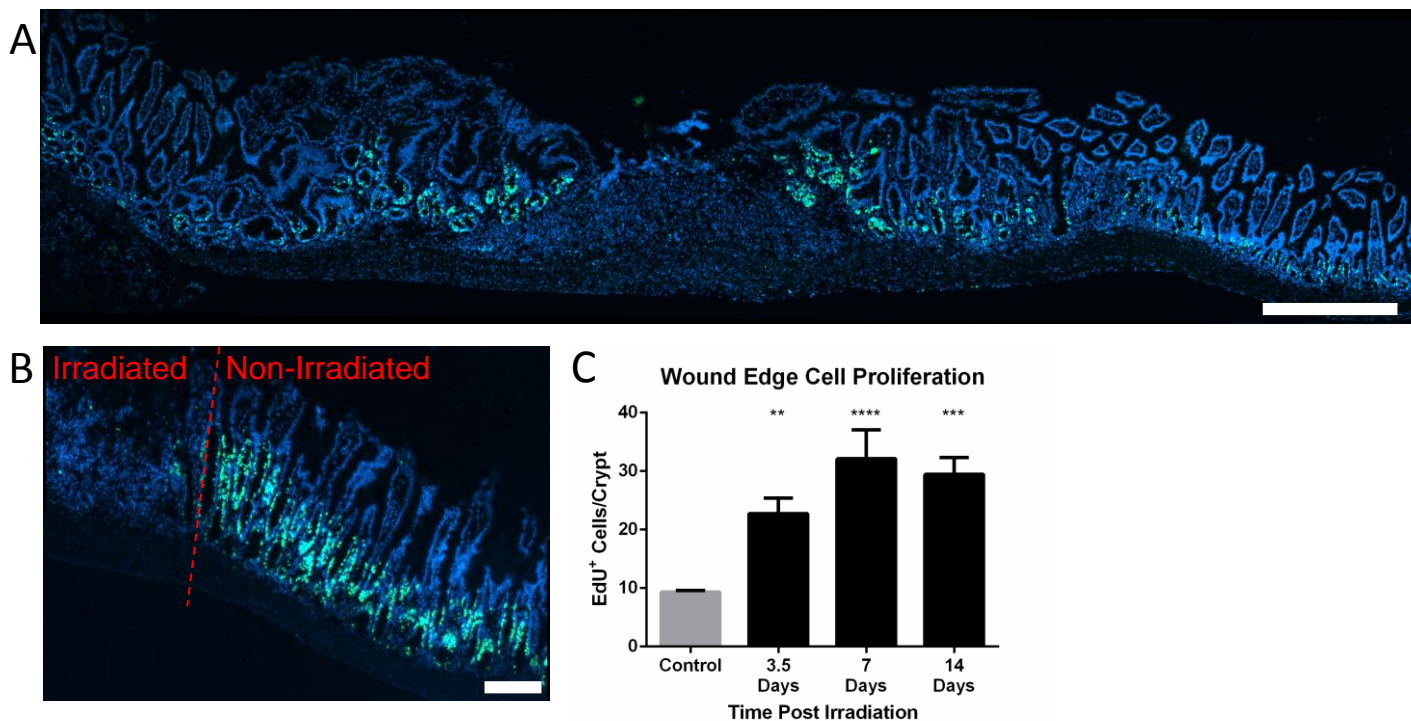


Figure A5
(A) EdU cell proliferation assay in C57Bl/6 showing ablation of cell proliferation in the irradiated intestine. Scale bar 500 μ m. (B) hyperplasia on the wound edges, then normal proliferation lateral to the irradiated area. (C) Quantification of approximately 10 total crypts lateral to either wound edge.