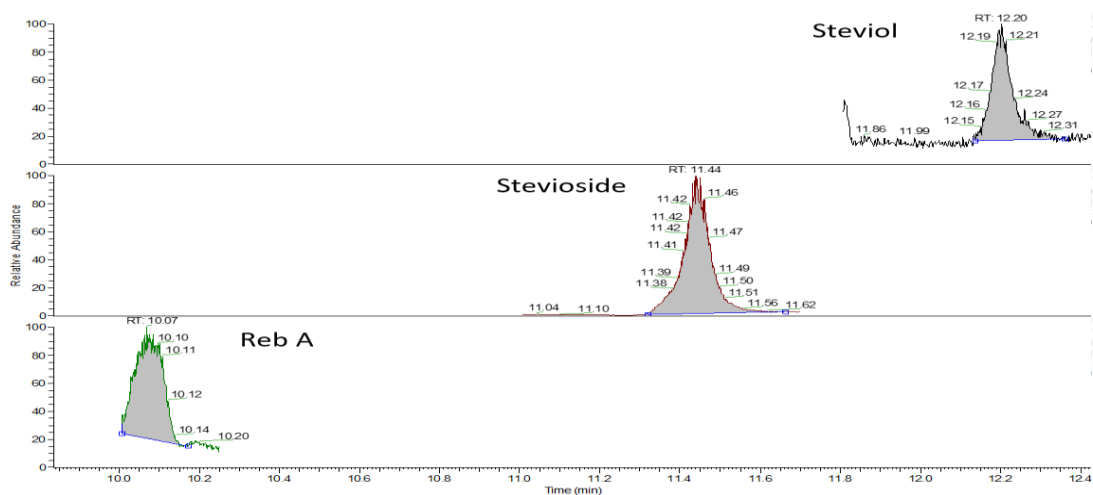
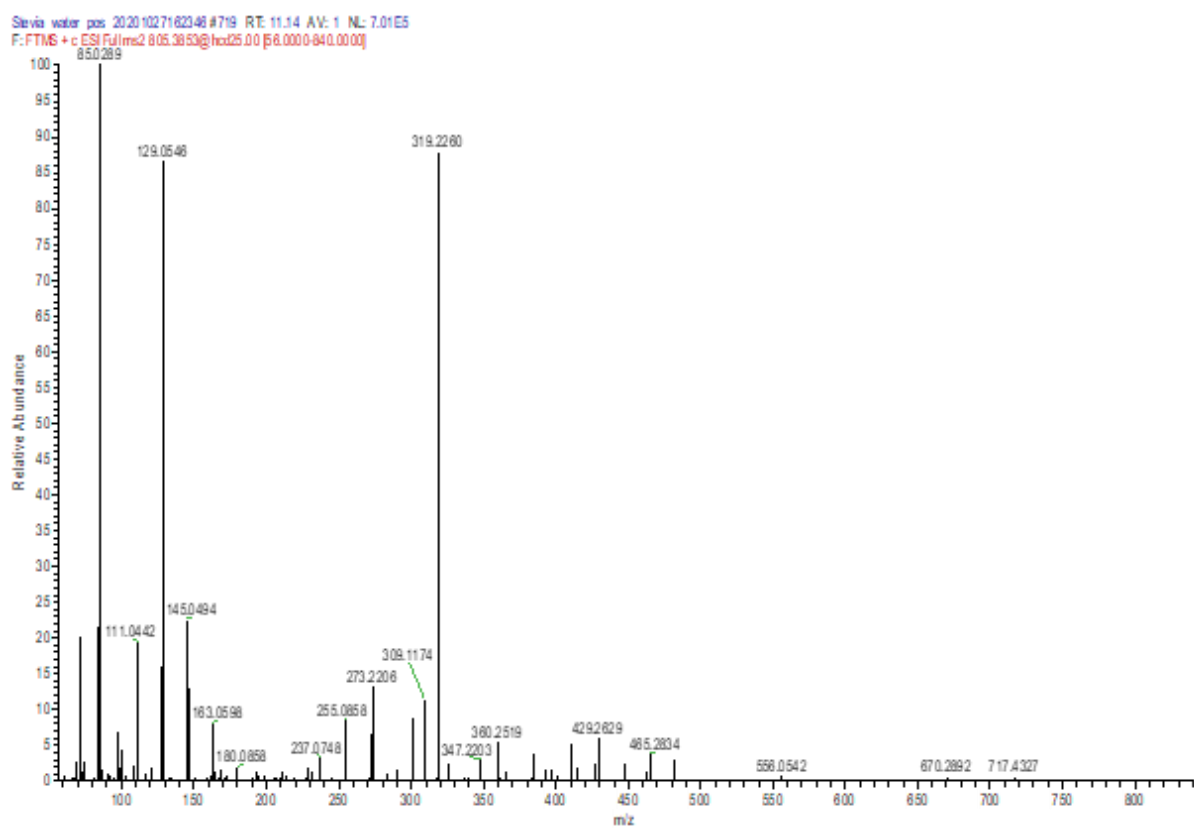


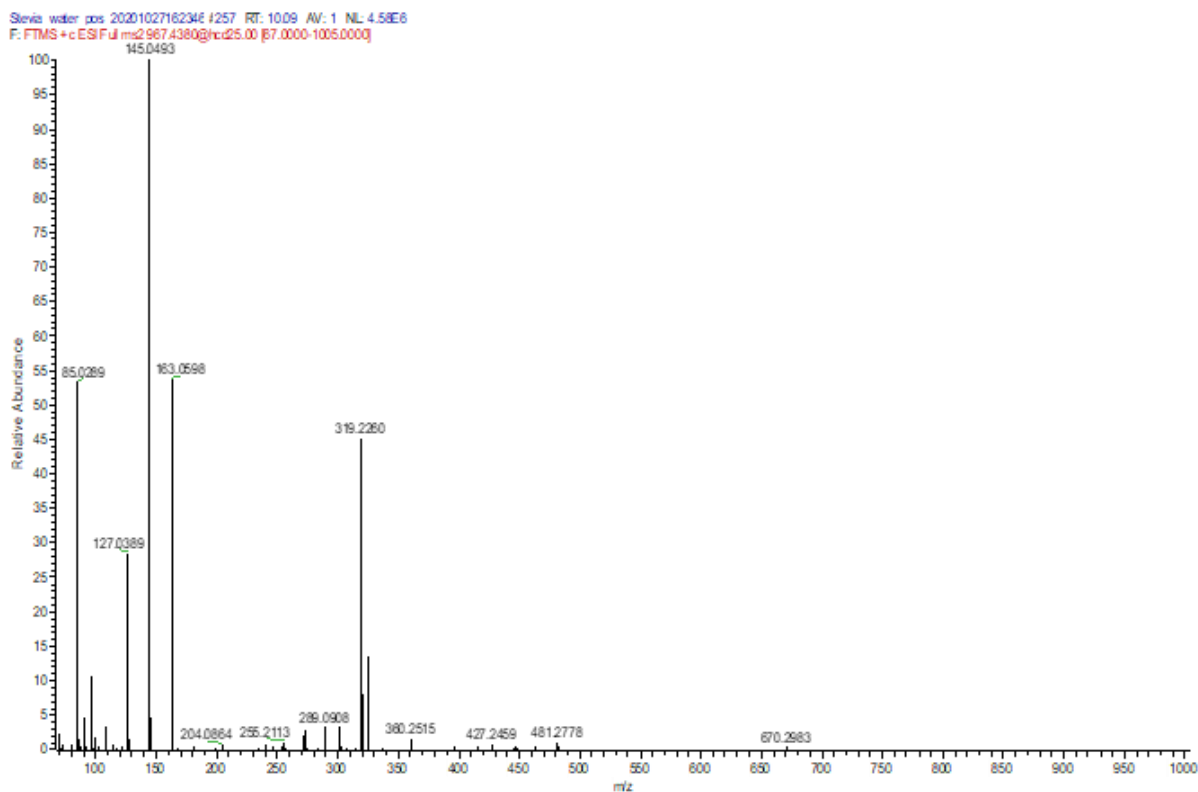
## Supplementary Materials:



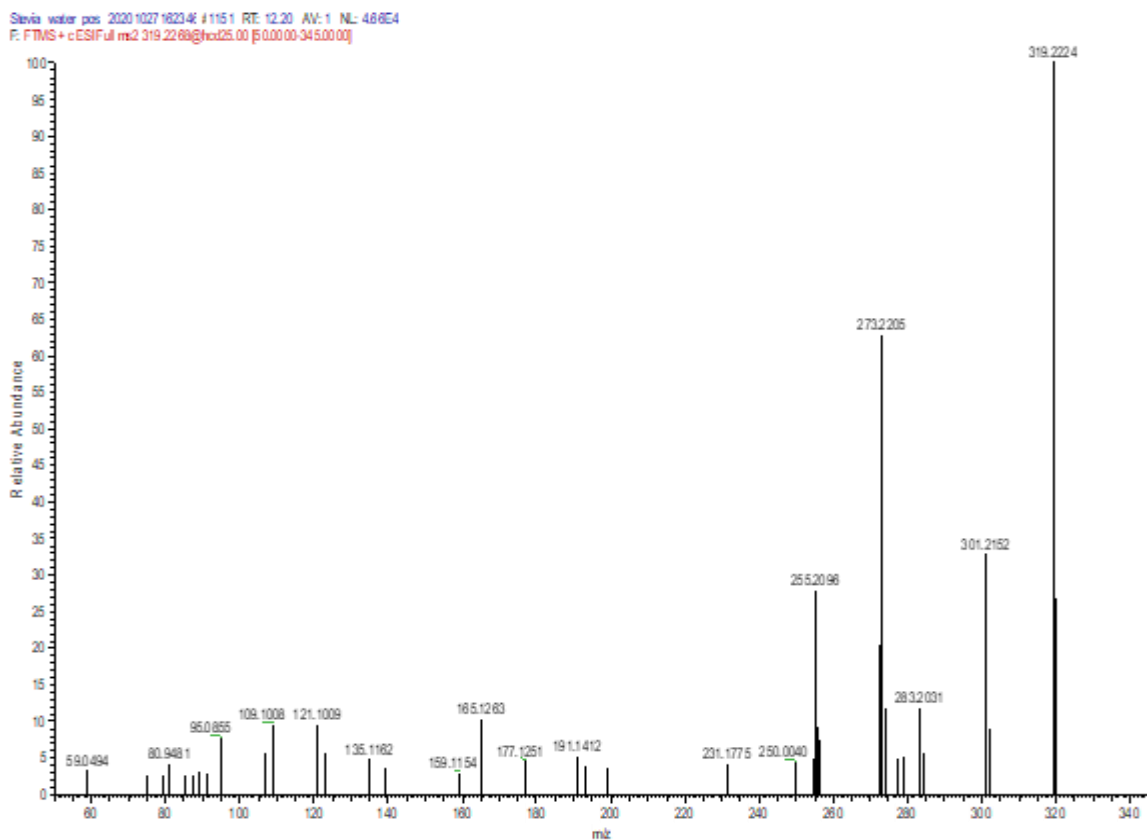
**Figure S1.** LC-MS chromatogram of the CSHS in parallel reaction monitoring (PRM) mode.



**Figure S2:** Product ion spectra obtained from MS/MS (PRM) fragmentations in positive ion mode of Stevioside ( $C_{38}H_{60}O_{18} + H^+$ , MS2 of 805.3853  $m/z$ ) in CSHS.



**Figure S3:** Product ion spectra obtained from MS/MS (PRM) fragmentations in positive ion mode of Reb A. ( $C_{44}H_{70}O_{23} + H^+$ . MS2 of 967.4380  $m/z$ ) in CSHS.



**Figure S4:** Product ion spectra obtained from MS/MS (PRM) fragmentations in positive ion mode of Steviol ( $C_{20}H_{30}O_3 + H^+$ . MS2 of 319.2268  $m/z$ ) in CSHS.