

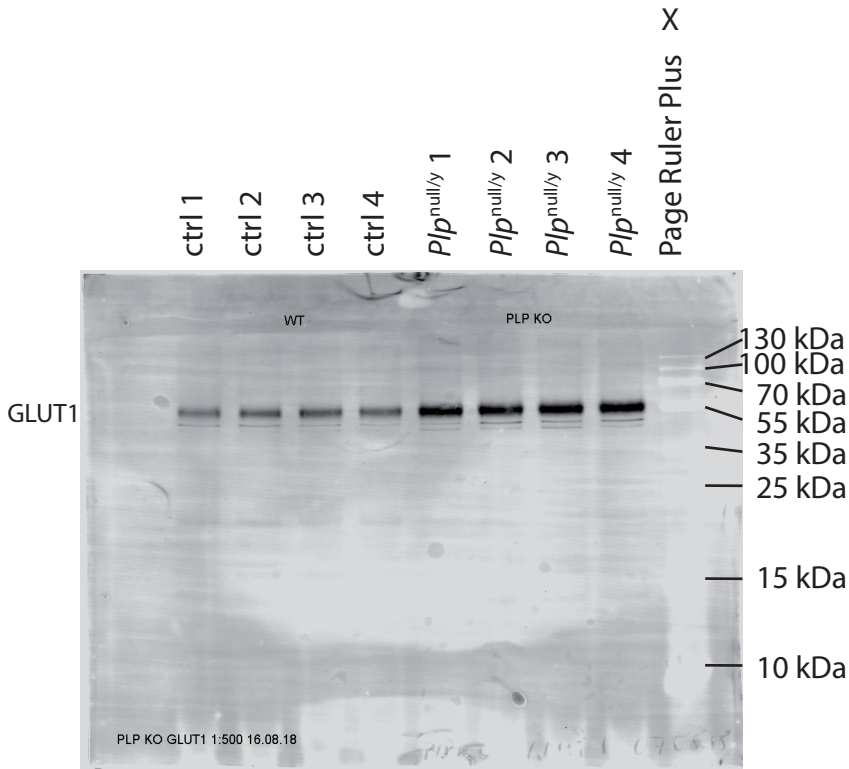
S1_raw_images for Trevisol and Kusch *et al.*

raw data for Trevisol and Kusch *et al.*, figure 6A

primary antibody: rabbit anti-GLUT1

secondary antibody: goat anti-rabbit-DyeLight800

detection at 800nm using a Odyssey Classic Imaging System (Licor)



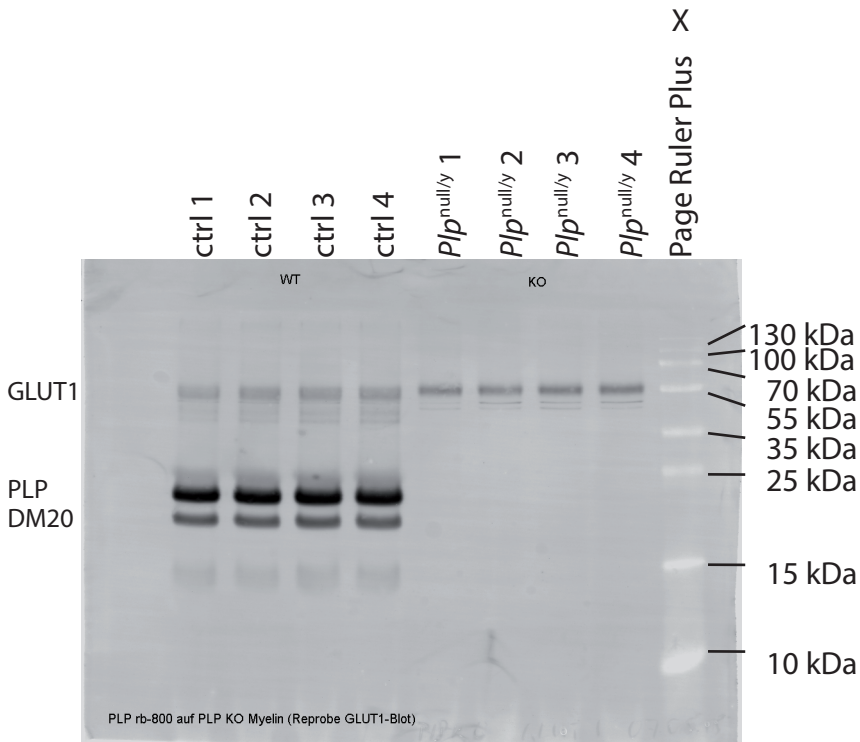
raw data for Trevisol and Kusch *et al.*, figure 6A

Reprobe of membrane used for GLUT1

primary antibody: rabbit anti-PLP

secondary antibody: goat anti-rabbit-DyeLight700

detection at 800nm using a Odyssey Classic Imaging System (Licor)

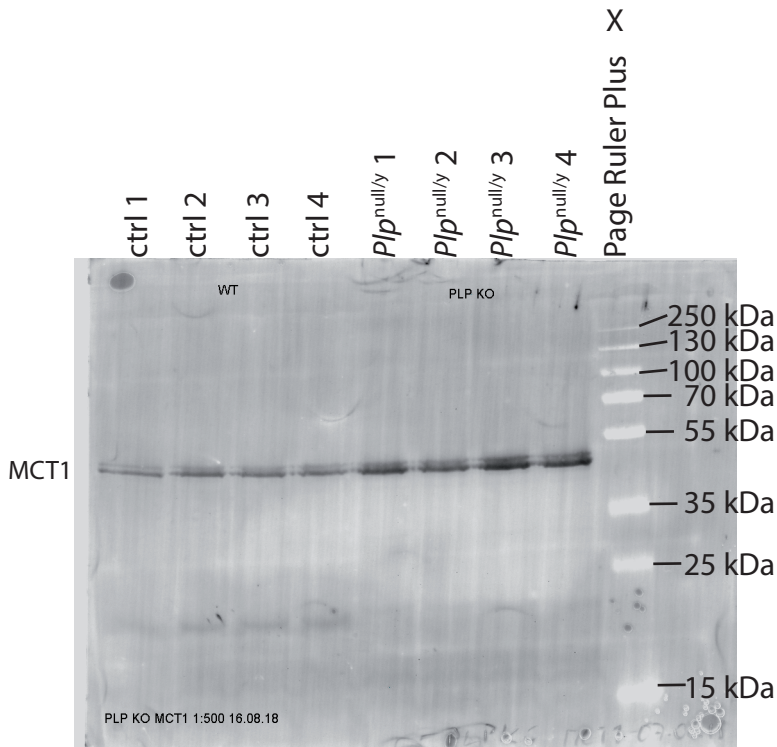


raw data for Trevisiol and Kusch et al., figure 6A

primary antibody: rabbit anti-MCT1

secondary antibody: goat anti-rabbit-DyeLight800

detection at 800nm using a Odyssey Classic Imaging System (Licor)



raw data for Trevisiol and Kusch et al., figure 6A

Reprobe of membrane used for MCT1

primary antibody: mouse anti-ACTB

secondary antibody: goat anti-mouse-DyeLight700

detection at 700nm using a Odyssey Classic Imaging System (Licor)

