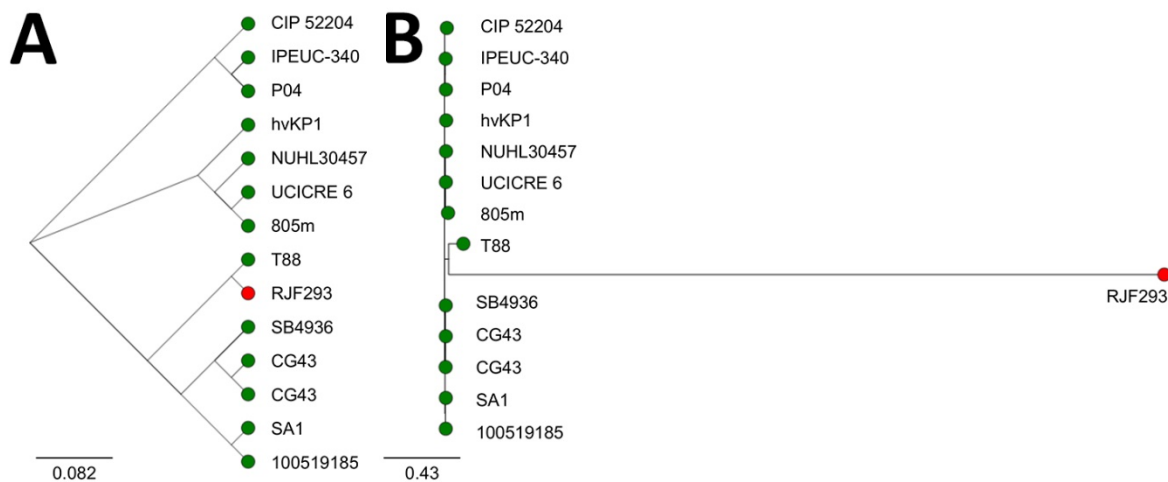


Hypervirulent *Klebsiella pneumoniae* as Unexpected Cause of Fatal Outbreak in Captive Marmosets, Brazil

Appendix



Appendix Figure. Schematic representations of high quality SNPs trees built from publicly available ST86 *K. pneumoniae* genomes. In A) it is possible to note that the P04 isolate described in this study clustered close to the IPEUC-340 isolate, recovered in 1975 in France. In B) we observe the high similarity of ST86 *K. pneumoniae* genomes in comparison with the outgroup strain RJJ293, an ST374 hypermucoviscous *K. pneumoniae* recovered from invasive infection. Green dots represent ST86 isolates; red dot represents ST374 isolate.