

Supplemental materials for:

Ebell MH, Bentivegna M, Hulme C. Cancer-specific mortality, all-cause mortality, and overdiagnosis in lung cancer screening trials: a meta-analysis. *Ann Fam Med.* 2020;18(6):545-552.

Supplemental Appendix. Search strategy used for the bridge search.

("lung neoplasm"[tiab] OR "lung cancer"[tiab] OR "lung neoplasia"[tiab] OR "lung tumor"[tiab] OR "lung carcinoma" OR "lung adenocarcinoma") AND ("screen"[tiab] or "screening"[tiab]) AND ("randomized" OR "random" OR "clinical trial" OR "randomization" OR "randomize")

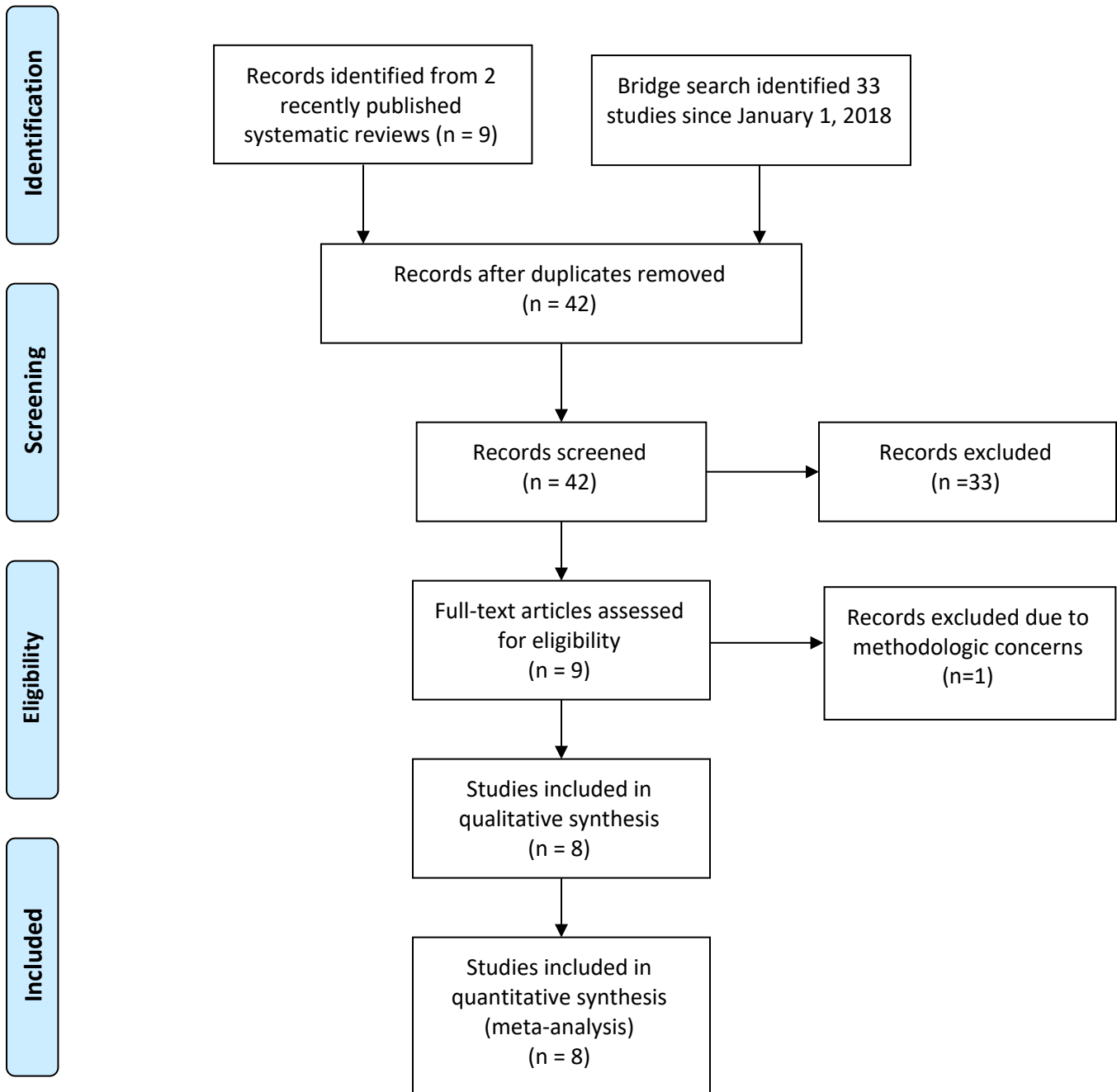
Limits: January 1, 2018 to March 1, 2020; has abstract; human

Supplemental Table 1. Mortality Data From Lung Cancer Screening Studies at Low Risk of Bias				
	Screened group		Comparison group	
Study (year)	Deaths	Total	Deaths	Total
Lung Cancer Mortality				
NLST, 2011	356	26722	443	26732
MILD, 2019	40	2376	40	1723
DANTE, 2015	59	1264	55	1186
LSS, 2018	32	1660	26	1658
ITALUNG, 2017	43	1613	60	1593
NELSON, 2020	186	7900	248	7892
DLCST, 2015	39	2052	38	2052
LUSI, 2020	29	2029	40	2023
All Cause Mortality				
NLST, 2011	1877	26722	2000	26732
MILD, 2019	137	2376	106	1723
DANTE, 2015	180	1264	176	1186
LSS, 2018	139	1660	116	1658
ITALUNG, 2017	111	1613	121	1593
NELSON, 2020	959	7900	974	7892
DLCST, 2015	165	2052	163	2052
LUSI, 2020	148	2029	150	2023

Supplemental Table 2. Incidence Data From Lung Cancer Screening Studies at Low Risk of Bias

Study	Long follow-up	Median follow-up (year)	Screened group		Comparison group	
			Lung cancers	Total	Lung cancers	Total
NLST, 2011	No	6.5	1060	26722	941	26732
MILD, 2019	No	6.2	98	2376	60	1723
DANTE, 2015	Yes	8.4	104	1264	72	1186
ITALUNG, 2017	Yes	9.3	67	1613	71	1593
NELSON, 2020	Yes	10	344	6583	304	6612
DLCST, 2015	Yes	9.8	100	2052	53	2052
LUSI, 2020	Yes	8.8	85	2029	67	2023

Supplemental Figure 1: PRISMA flow diagram of search



Supplemental Figure 2. Funnel plot showing no evidence of publication bias.

