

Supplementary Online Content

Kumar NP, Moideen K, Nancy A, et al. Association of plasma matrix metalloproteinase and tissue inhibitors of matrix metalloproteinase levels with adverse treatment outcomes among patients with pulmonary tuberculosis. *JAMA Netw Open*. 2020;3(12):e2027754. doi:10.1001/jamanetworkopen.2020.27754

eFigure 1. Elevated Baseline Plasma Levels of MMPs and TIMPs in Cases in the Test and Validation Cohorts

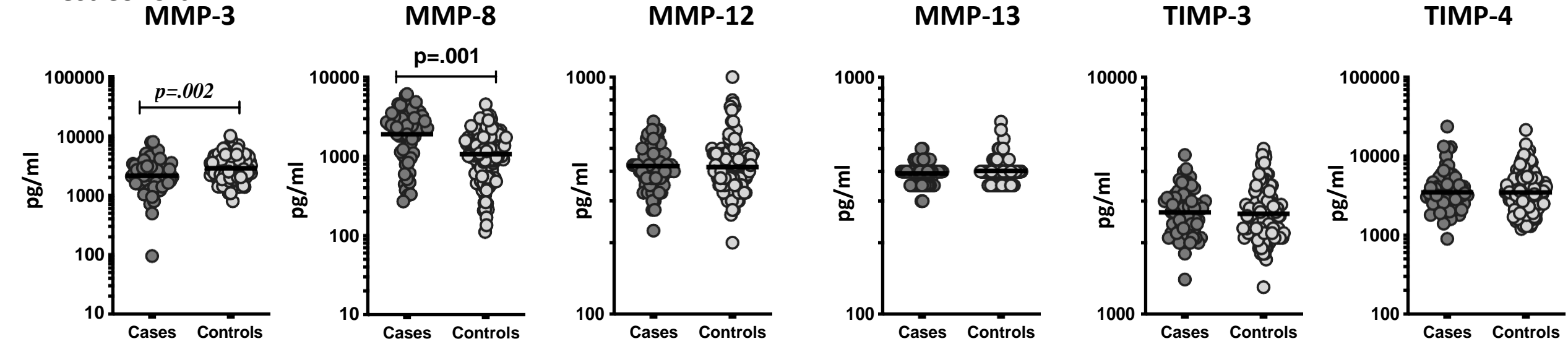
eFigure 2. Receiver Operating Characteristic Analysis to Estimate the Discriminatory Power of Systemic MMPs and TIMPs With Bad Outcomes and Control

eTable. Demographic and Clinical Characteristics of the Study Population—Validation Cohort

This supplementary material has been provided by the authors to give readers additional information about their work.

eFigure 1. Elevated Baseline Plasma Levels of MMPs and TIMPs in Cases in the Test and Validation Cohorts

A. Test Cohort



B. Validation Cohort

B. Validation Cohort

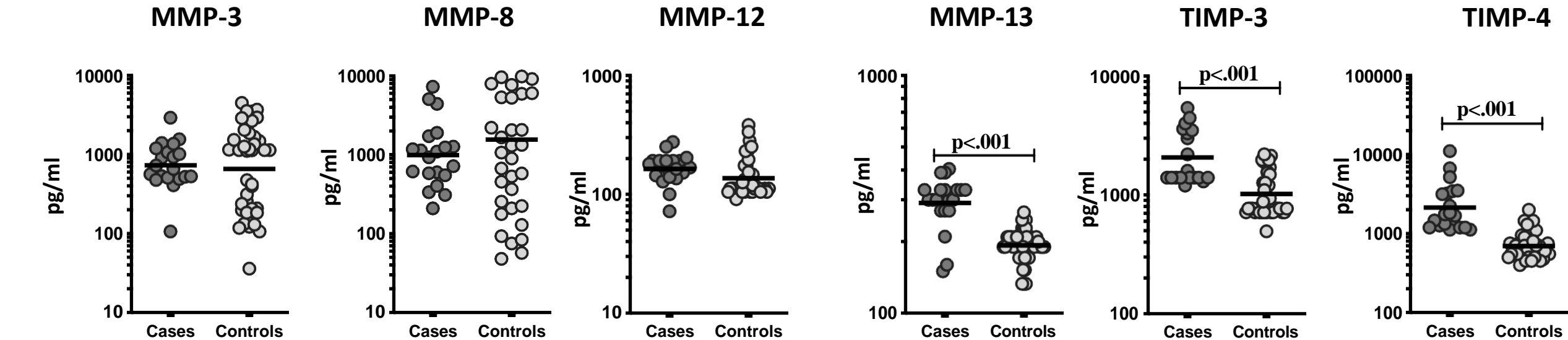
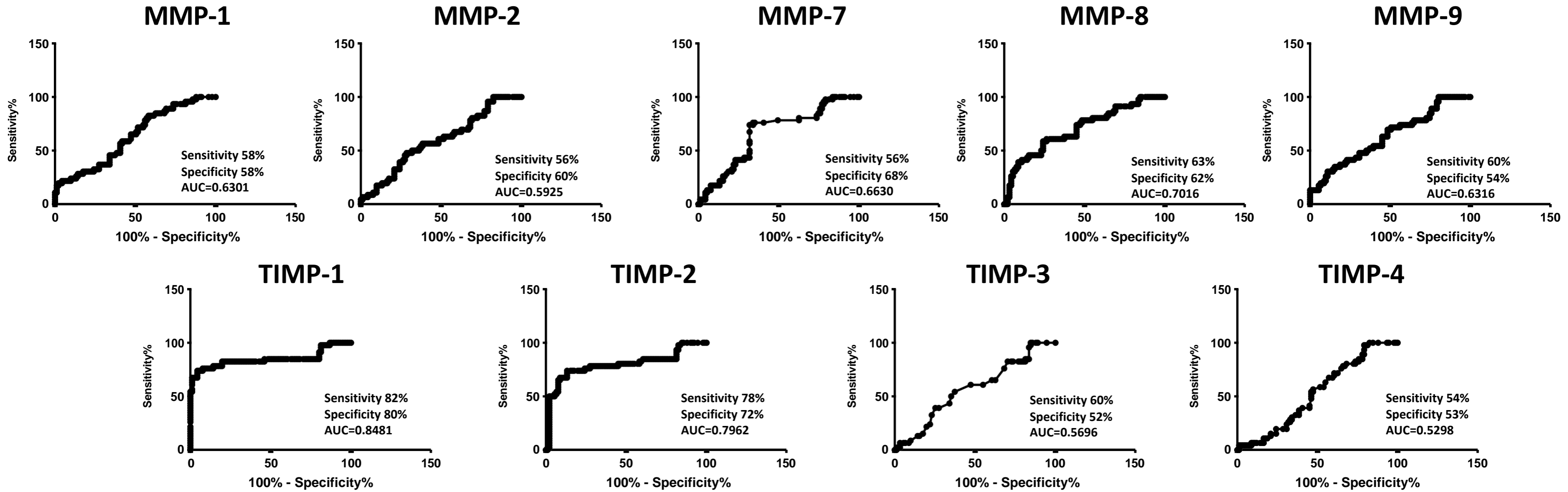
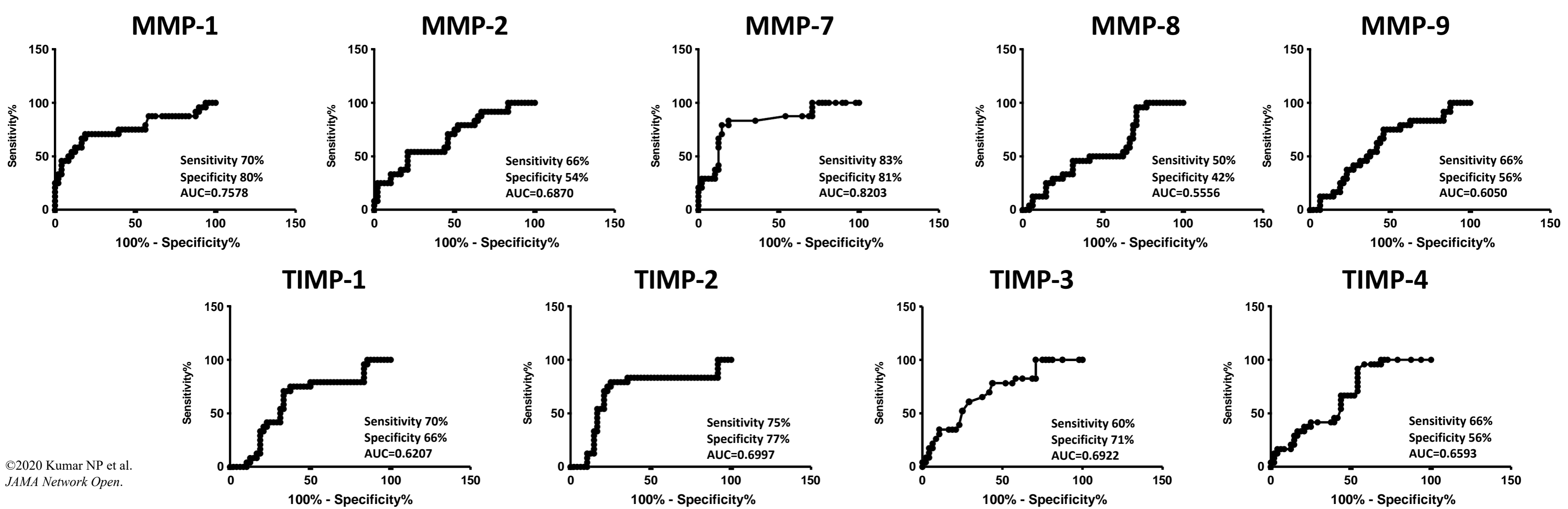


Figure 2. Receiver Operating Characteristic Analysis to Estimate the Discriminatory Power of Systemic MMPs and TIMPs With Bad Outcomes and Control

A. Relapse Cases vs Controls



B. Treatment Failure Cases vs Controls



eTable. Demographic and clinical characteristics of the study population – Validation cohort

Characteristic	All (n=60)	Cases (n=20 [34%])	Controls (n=40 [66%])	P Value
Age, y, median	45 (19 – 61)	45 (20 - 48)	40 (19 - 61)	0.1297
Gender				
Male	51 [85%]	19 [95%]	32 [80%]	0.1250
Female	9 [15%]	1 [5%]	8 [20%]	
Cavity				
Yes	27 [45%]	10 [50%]	17 [43%]	0.5820
No	33 [55%]	10 [50%]	23 [57%]	
Smear Grade				
1+	22 [36%]	7 [35%]	15 [38%]	0.9743
2+	21 [35%]	7 [35%]	14 [35%]	
3+	17 [29%]	6 [30%]	11 [27%]	
Culture Grade				
1+	20 [33%]	7 [35%]	13 [33%]	0.9277
2+	20 [33%]	7 [35%]	13 [33%]	
3+	20 [33%]	6 [30%]	14 [34%]	