

An interaction of heart disease-associated proteins POPDC1/2 with XIRP1 in transverse tubules and intercalated discs

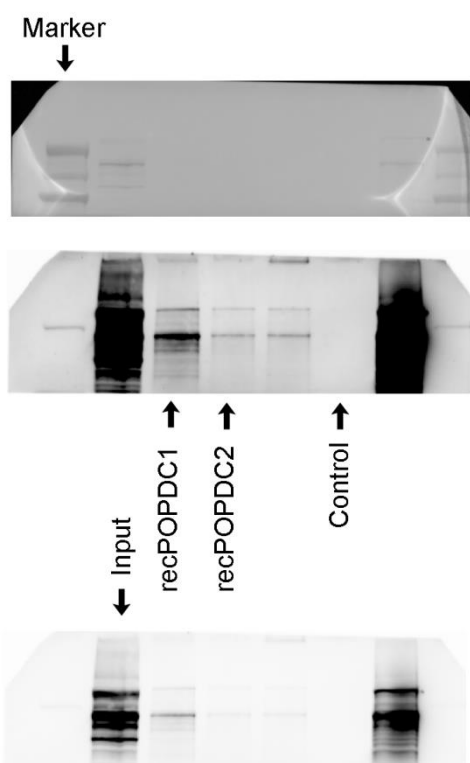
Ian Holt, Heidi R Fuller, Roland FR Schindler, Sally L Shirran, Thomas Brand and Glenn E Morris

Additional File 2

Original uncropped blots used for Figure 1:

Vertical black arrows show the lanes of these uncropped blots that were used to make up Figure 1. Non-adjacent lanes in the original blot that were juxtaposed in Figure 1 are shown separated by a black line in figure 1.

Figure 1A original upper blot:



Colourimetric image:

Molecular weight marker

Chemiluminescent images (XIRP1):

Long exposure to show "recPOPDC1", "recPOPDC2" and "Control" lanes

Short exposure to show "Input" lane

Figure 1A original lower blot:

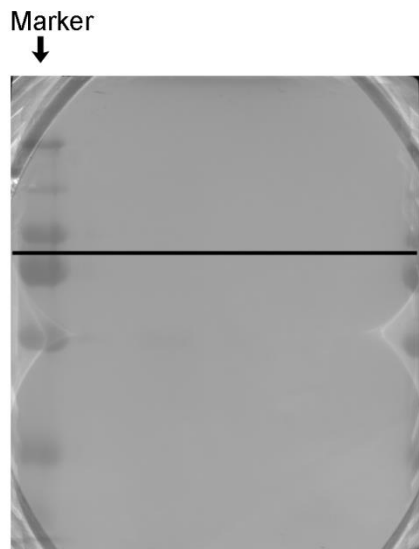
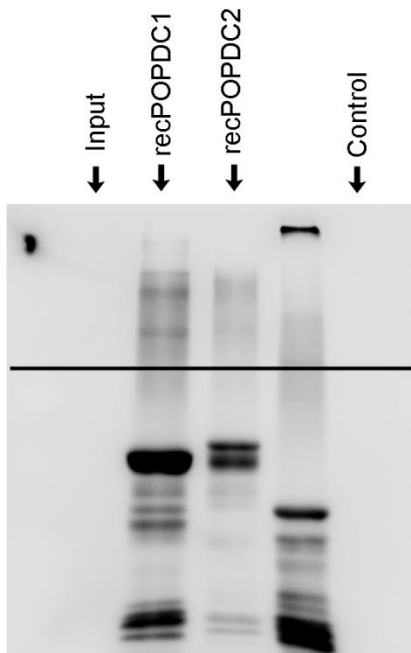


Image shown in Fig. 1A below the horizontal black line

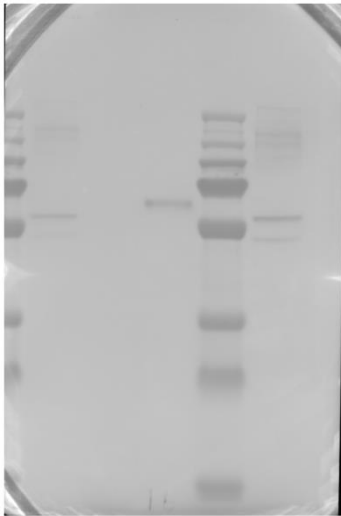
Colourimetric image:
Molecular weight marker



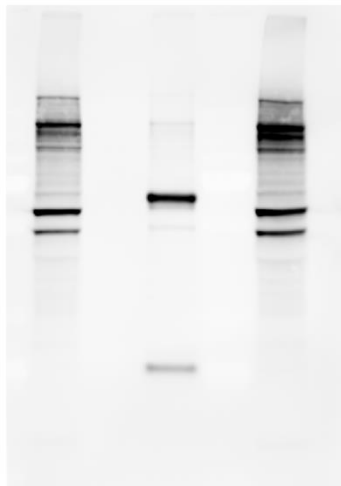
Chemiluminescent image (GST):
“Input”, “recPOPDC1”, “recPOPDC2” and
“Control” lanes

Figure 1B original blot:

Marker

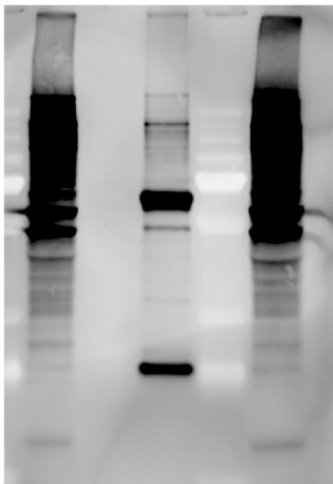


Colourimetric image:
Molecular weight marker



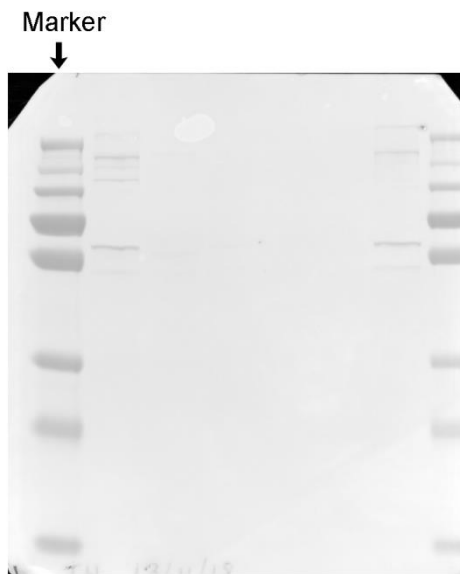
Chemiluminescent images (XIRP1):
Short exposure to show "Input" and "Control" lanes

↑
Input
↑
Control
↓
POPDC1 1C12

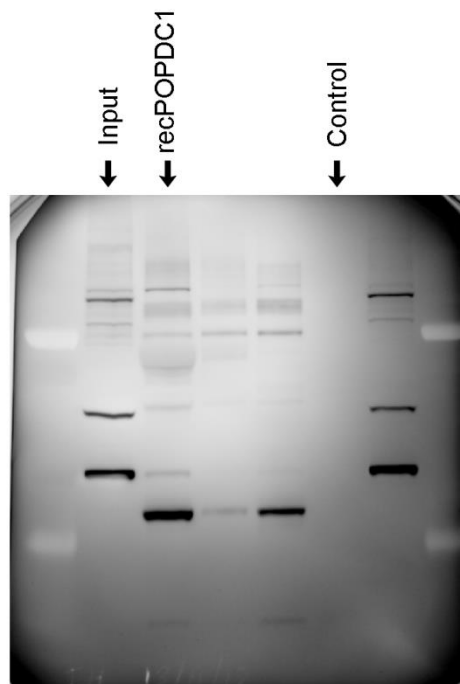


Long exposure to show "POPDC1 1C12" lane

Figure 1C original blot:



Colourimetric image:
Molecular weight marker

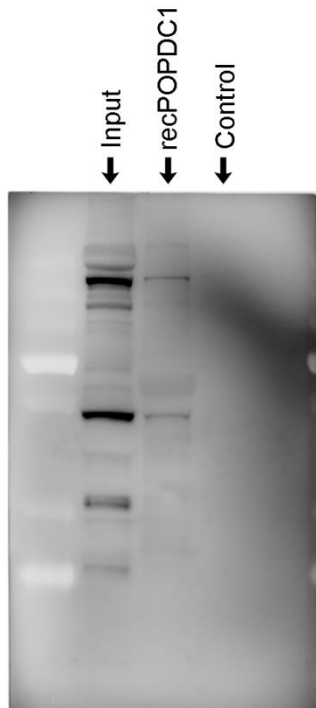


Chemiluminescent image (Annexin A5):
"Input", "recPOPDC1" and "Control" lanes

Figure 1D original blot:



Colourimetric image:
Molecular weight marker



Chemiluminescent images (XIRP1):
“Input”, “recPOPDC1” and “Control”
lanes