

# ***PlosOne* Supporting Information S1 Appendix**

**Article title: Comparison of the Human Microbiome in Adults and Children with Chronic Rhinosinusitis.**

**Authors: Il-Ho Park, Joong Seob Lee, Joo-Hoo Park, Sung Hun Kang, Seok Min Hong, Il Seok Park, Joo Heung Yoon and Seok Jin Hong**

**The following supporting information is available for this article:**

**S1 Table A. Averaged taxonomic compositions in Genus level of Adult group.**

**S1 Figure A. Species richness indexes.**

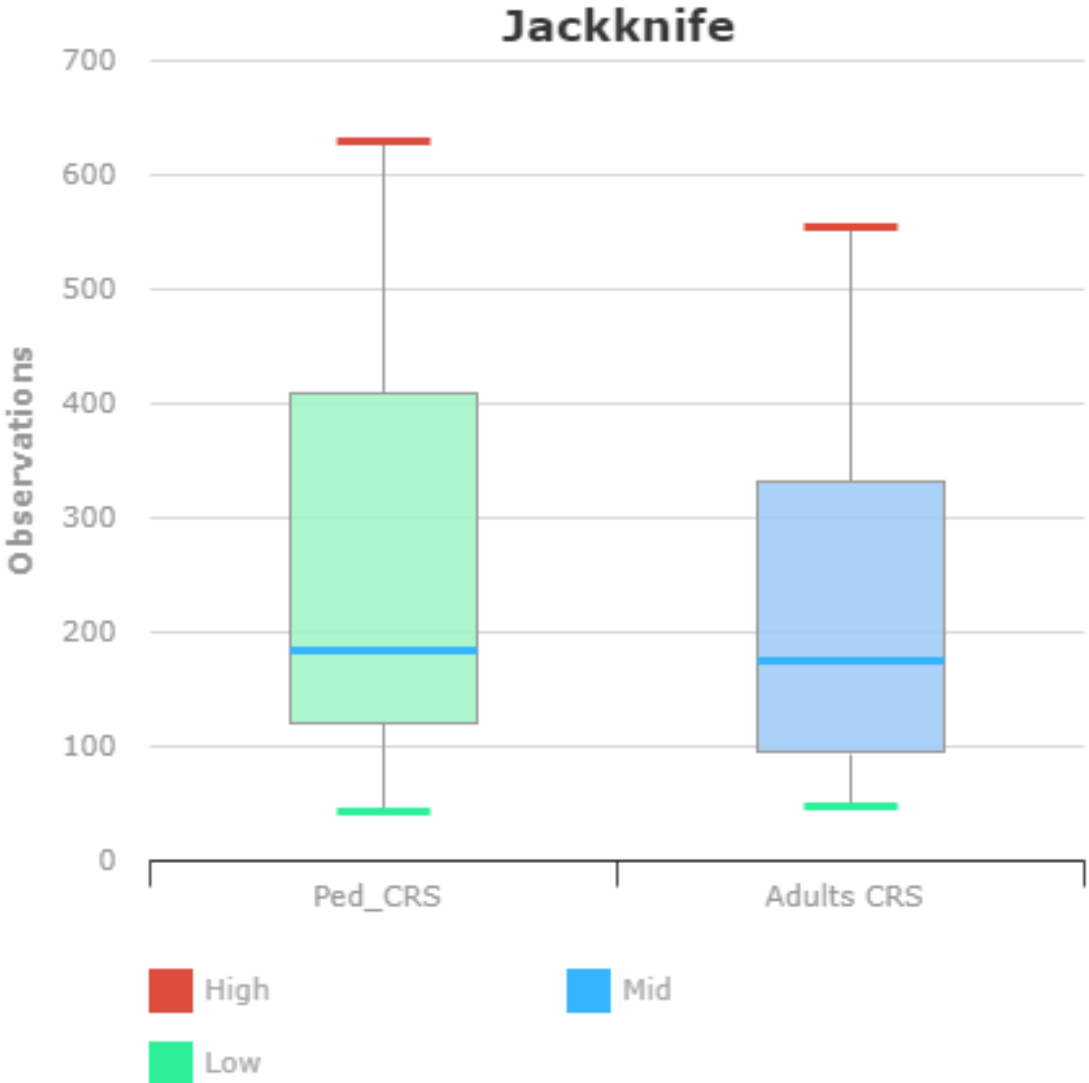
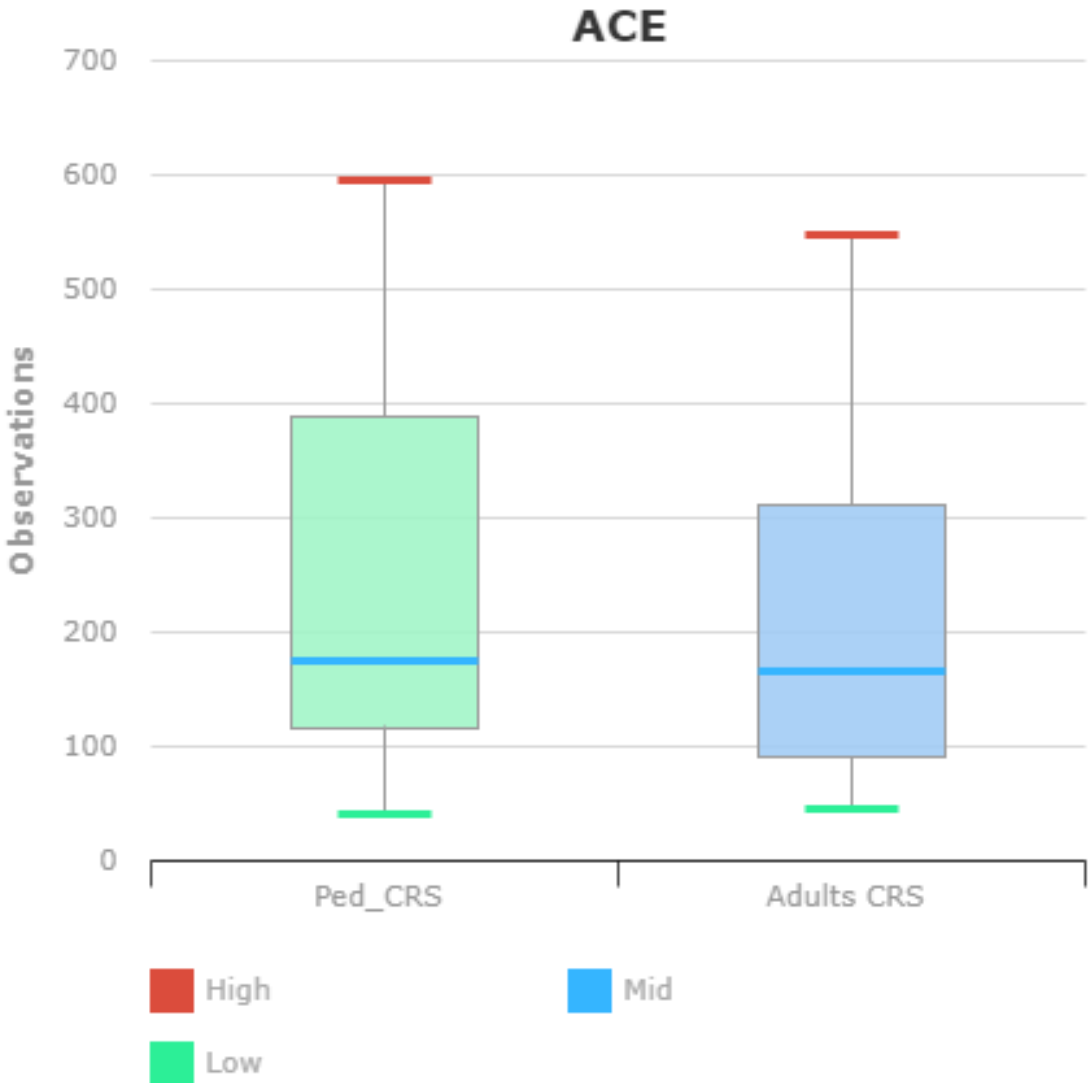
**S1 Figure B. Alpha-diversity indexes.**

**S1 Figure C. Averaged taxonomic compositions in Species level of adult group and pediatric group.**

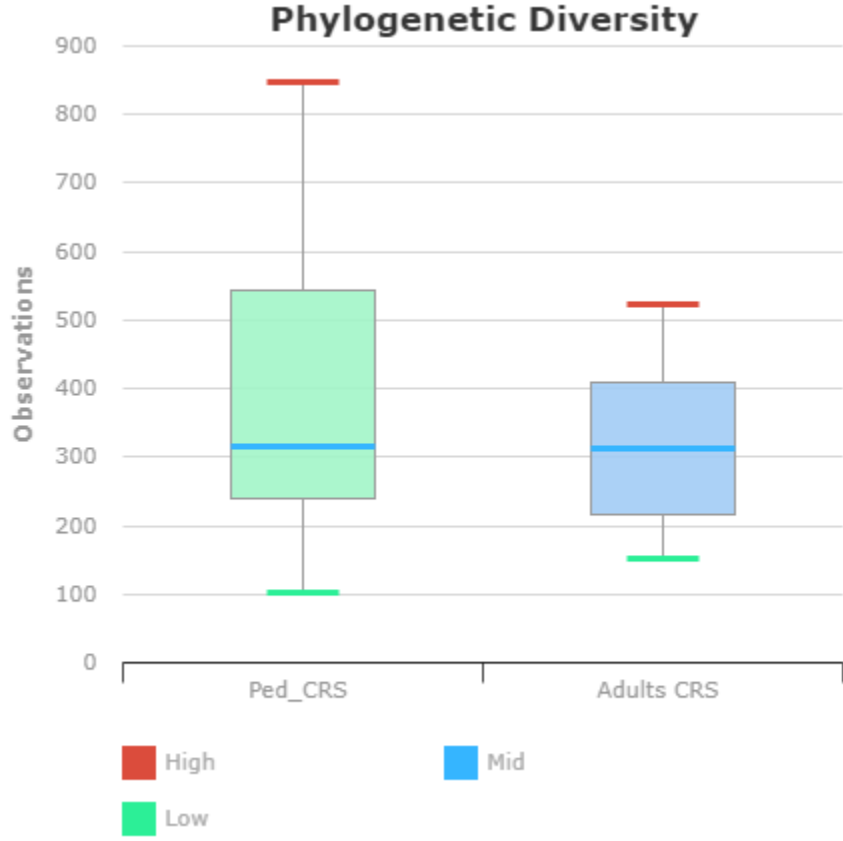
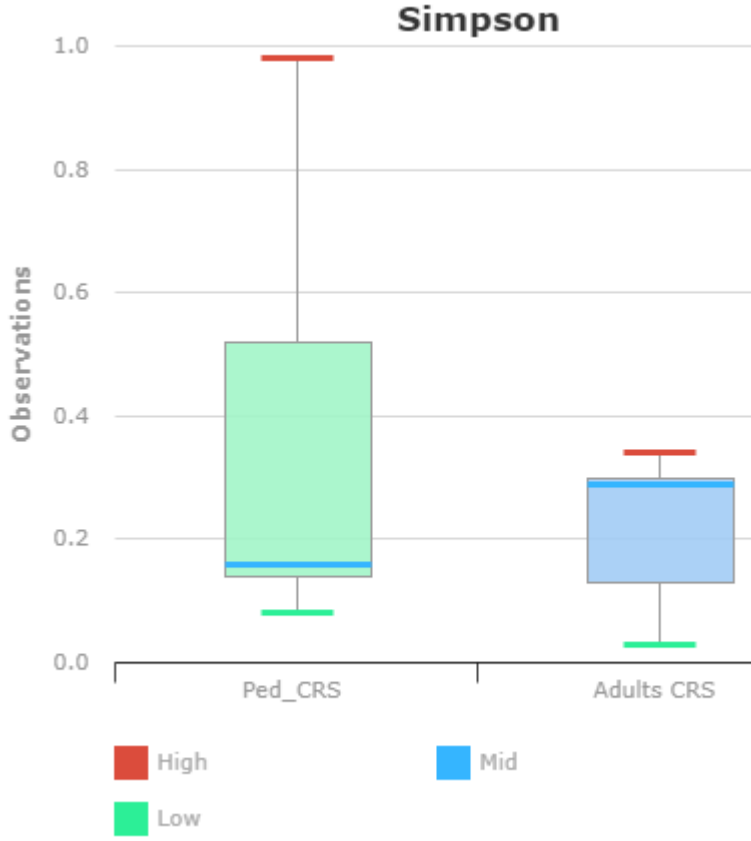
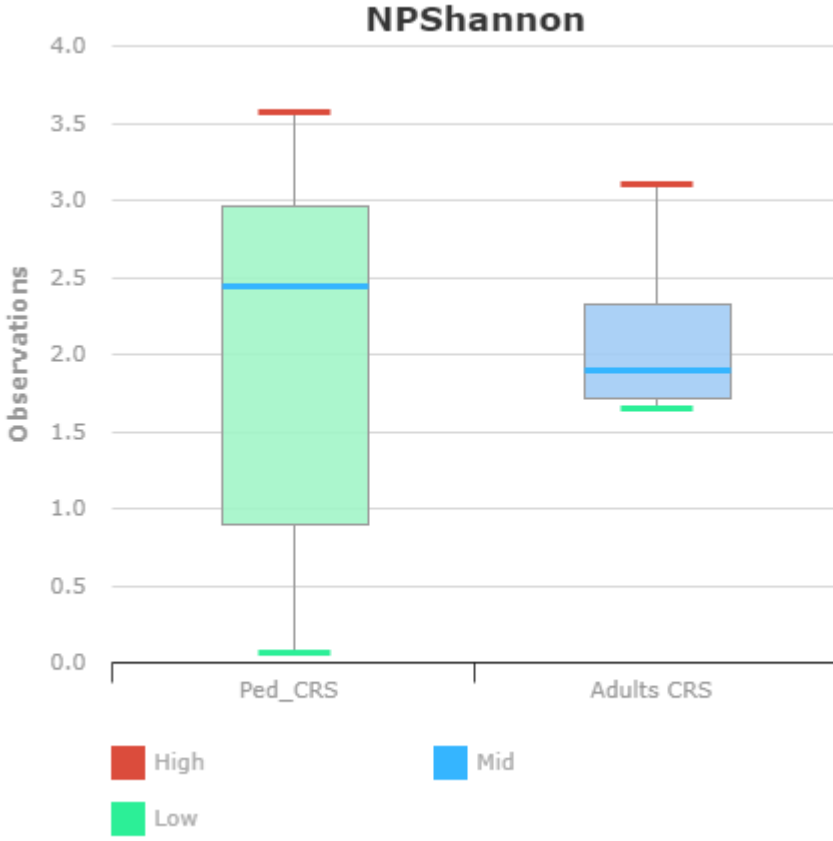
# Table A.

Genus	Proportion
Corynebacterium	0.2507981
Staphylococcus	0.1311886
Haemophilus	0.0604578
Fusobacterium	0.0500684
Mycoplasma_g13	0.0416475
Escherichia	0.0361305
Propionibacterium	0.029079
Anaerococcus	0.0265404
Peptoniphilus	0.0262038
Bacteroides	0.0234132
Moraxella	0.0178917
Streptococcus	0.0141024
Citrobacter	0.0129738
Prevotella	0.0106526
Unclassified in higher taxonomic	0.0006087
ETC(under 1% in average)	0.1781553

# Figure A.



# Figure B.



# Figure C

