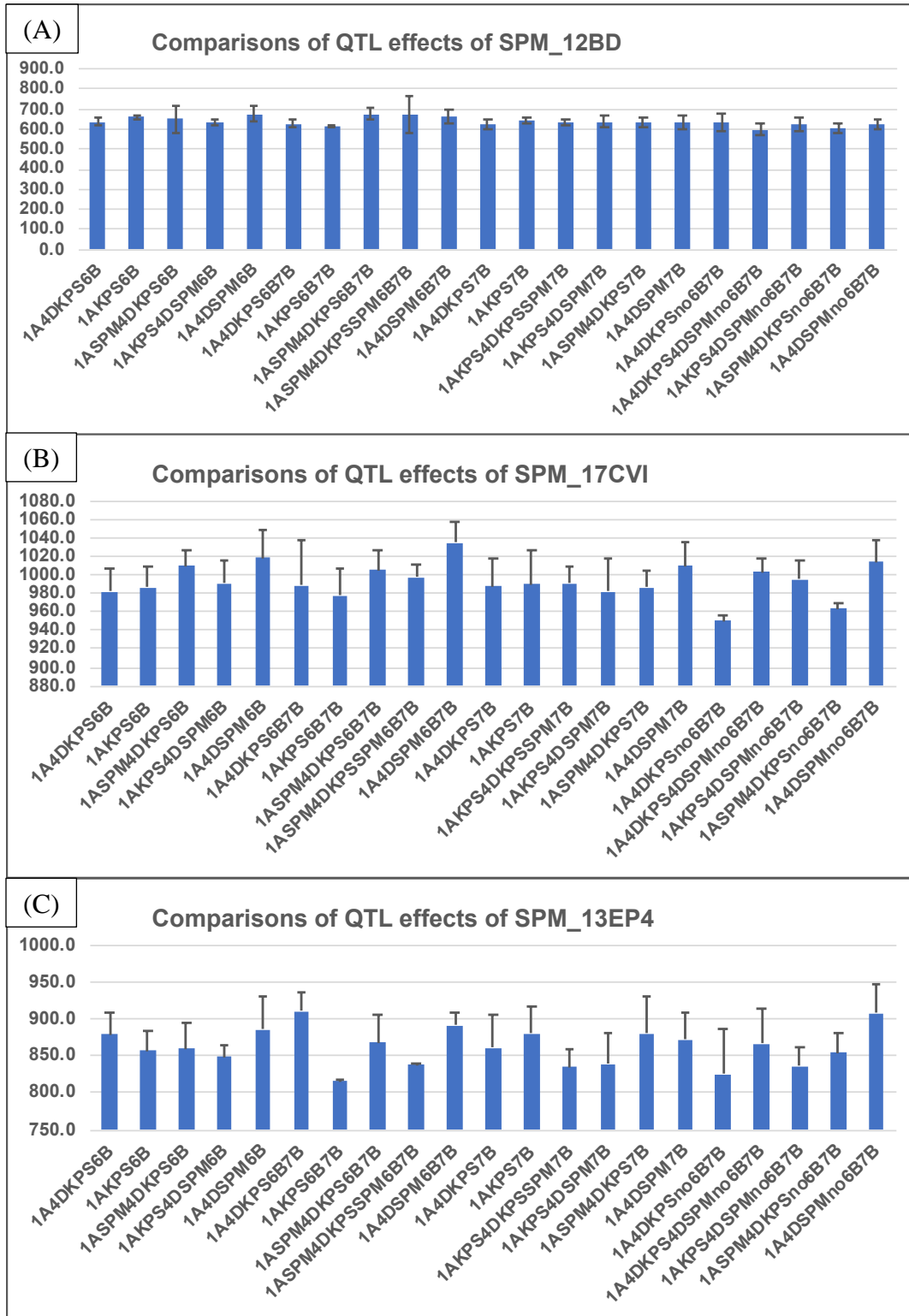
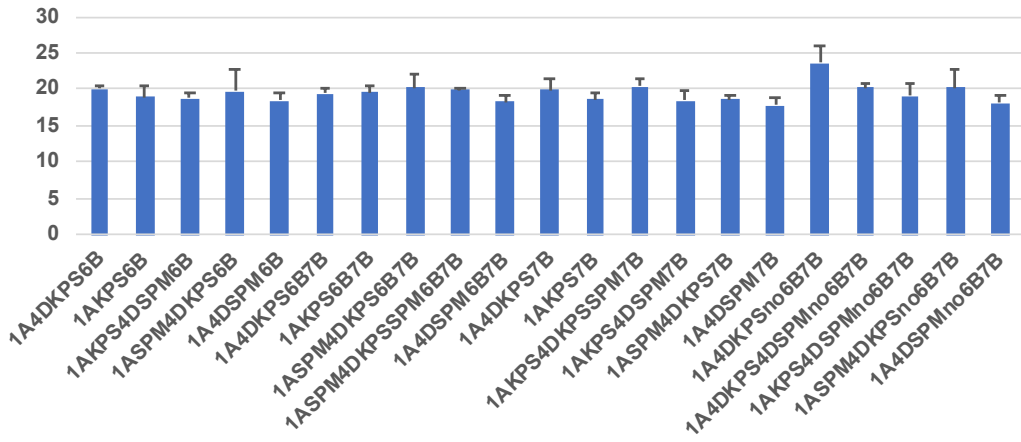


**S4 Fig. QTL allele effects on spike  $m^{-2}$  and kernels  $spike^{-1}$  from various environments with the presence of significance of QTL.** Total six QTL combinations were classified as 21 groups with number of RILs from two to ten. The means of each trait and their corresponding standard deviations were showed in the graphs.



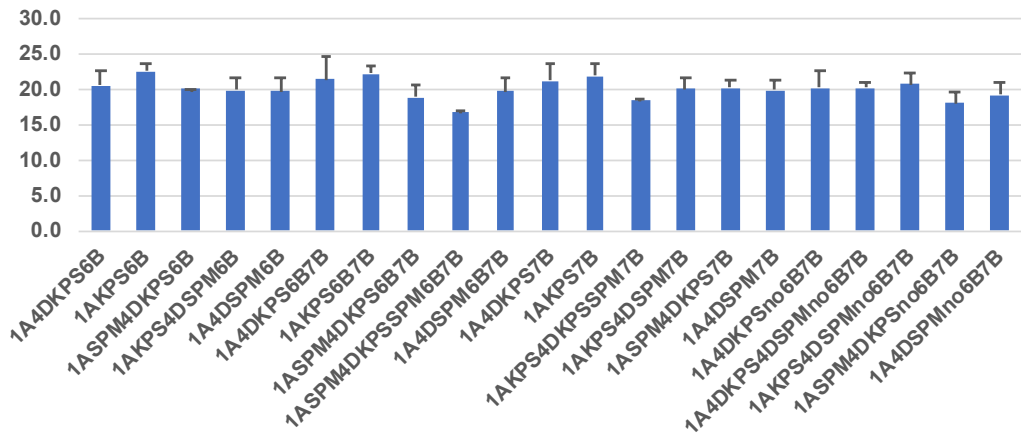
(D)

Comparisons of QTL effects of KPS\_12BD



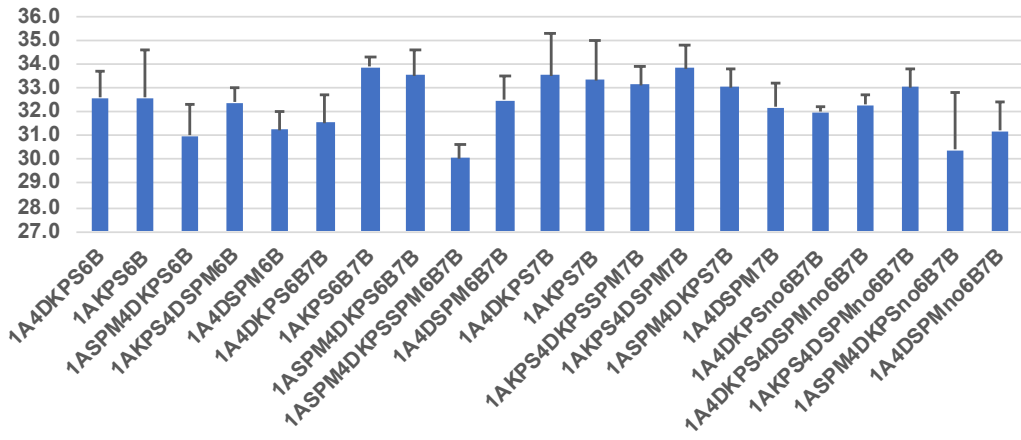
(E)

Comparisons of QTL effects of KPS\_17CVI



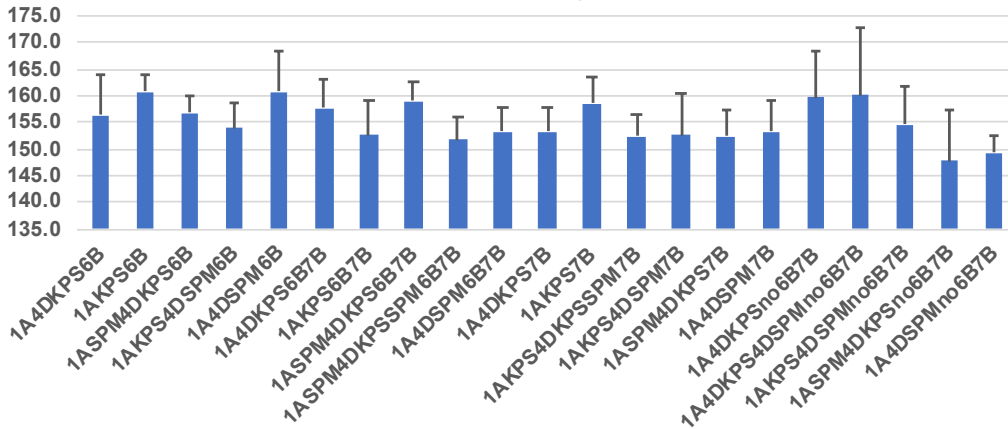
(F)

Comparisons of QTL effects of KPS\_17DMS



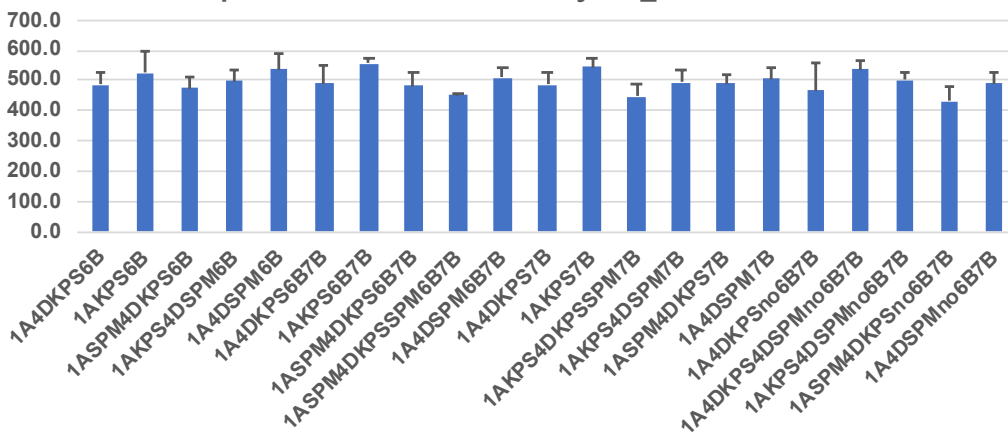
(G)

Comparisons of QTL effects of yield\_12BD



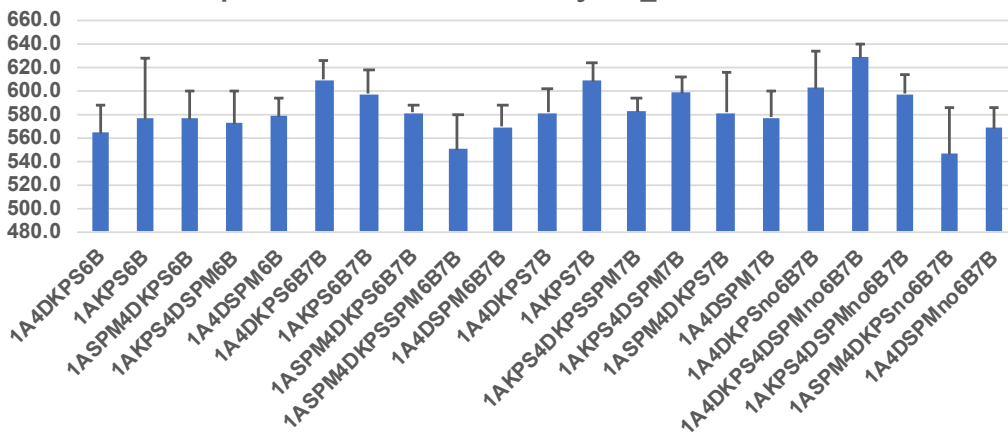
(H)

Comparisons of QTL effects of yield\_17CVI



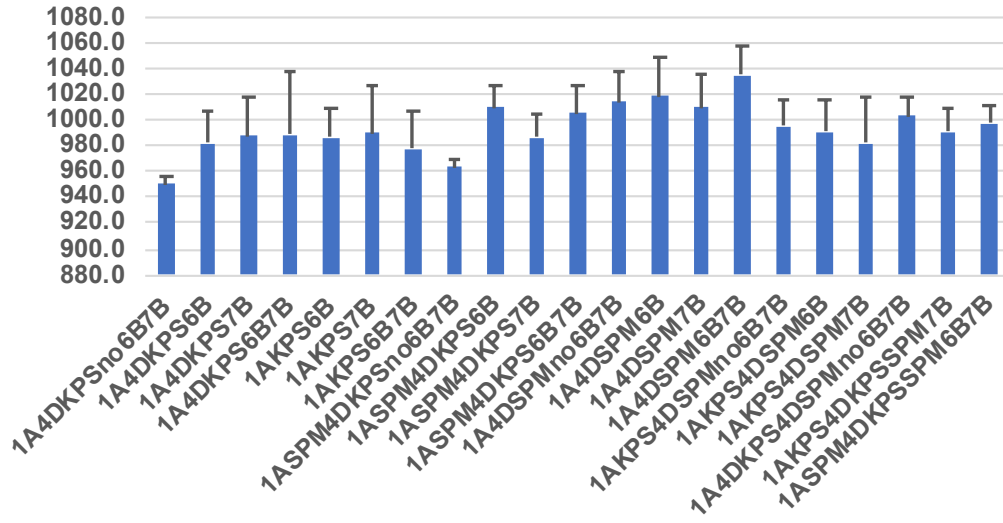
(I)

Comparisons of QTL effects of yield\_17DMS



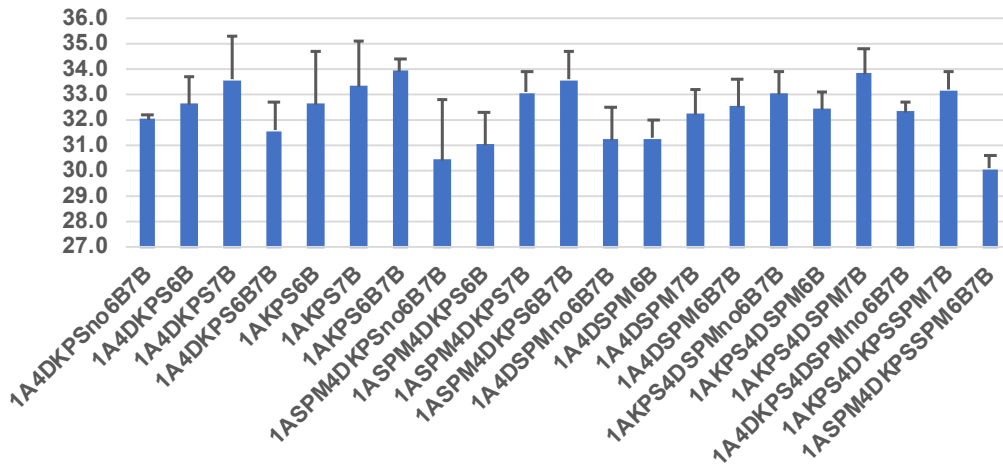
(J)

Comparisons of QTL effects of SPM\_17CVI



(K)

Comparisons of QTL effects of KPS\_17DMS



(L)

Comparisons of QTL effects of yield\_17CVI

