

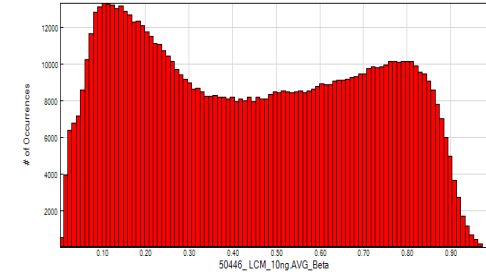
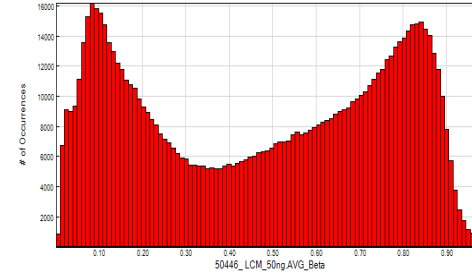
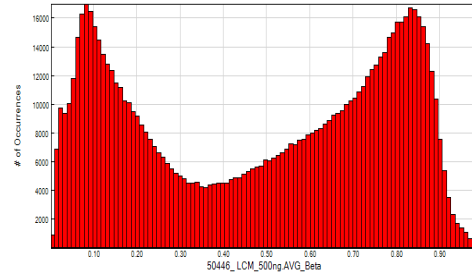
Input DNA mass

500 ng

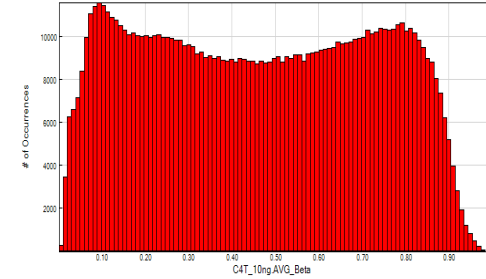
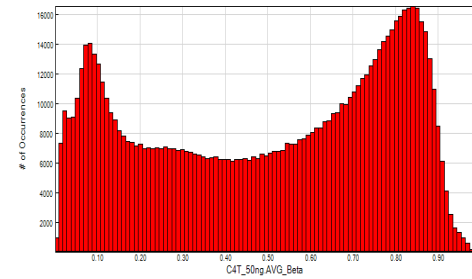
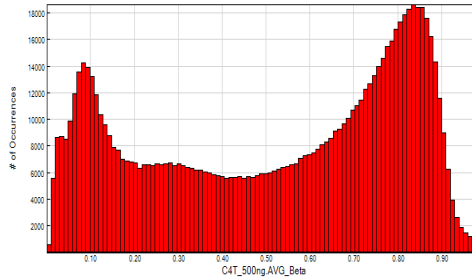
50 ng

10 ng

Test LCM FFPE
Sample 1

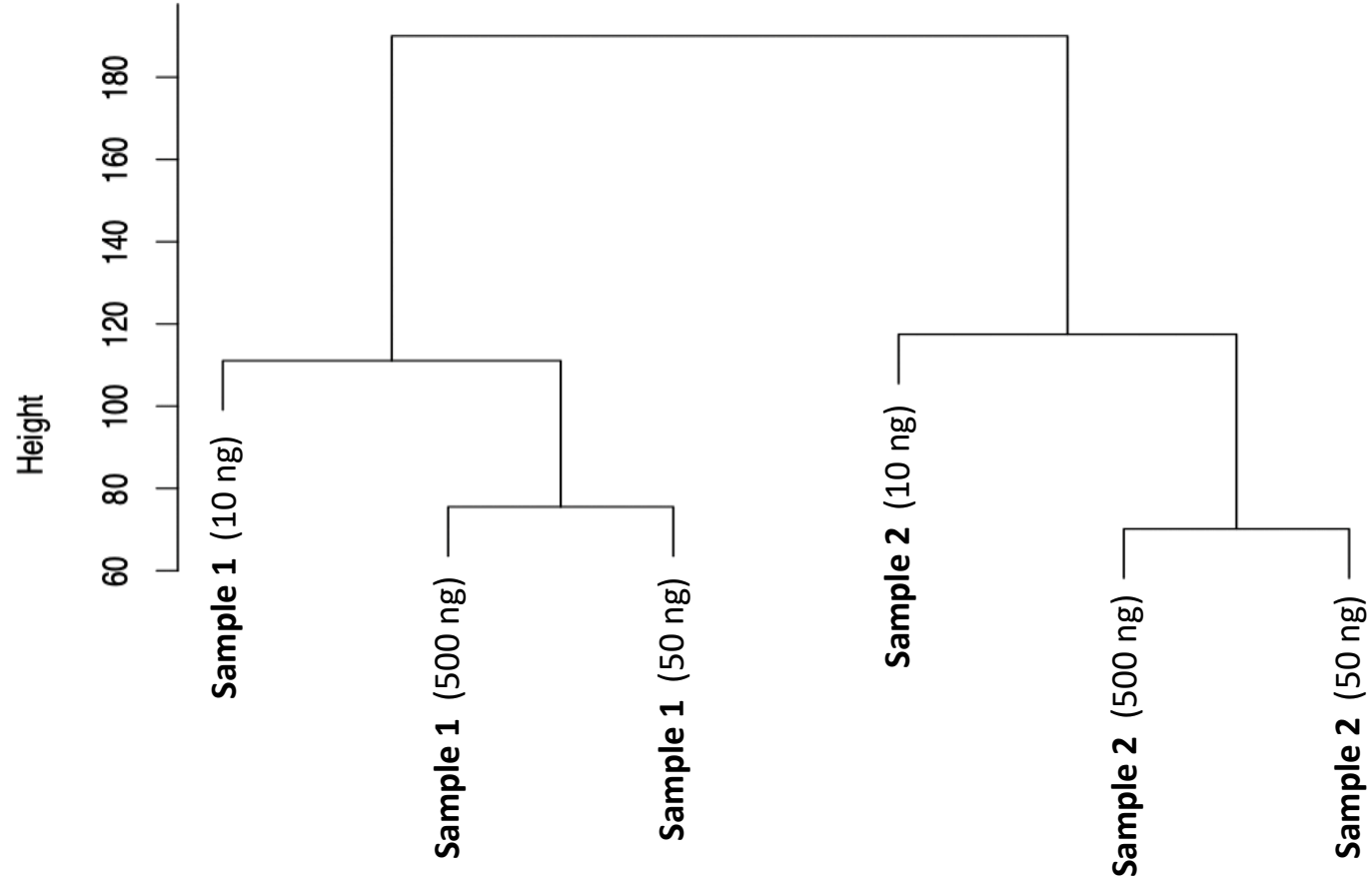


Test LCM FFPE
Sample 2

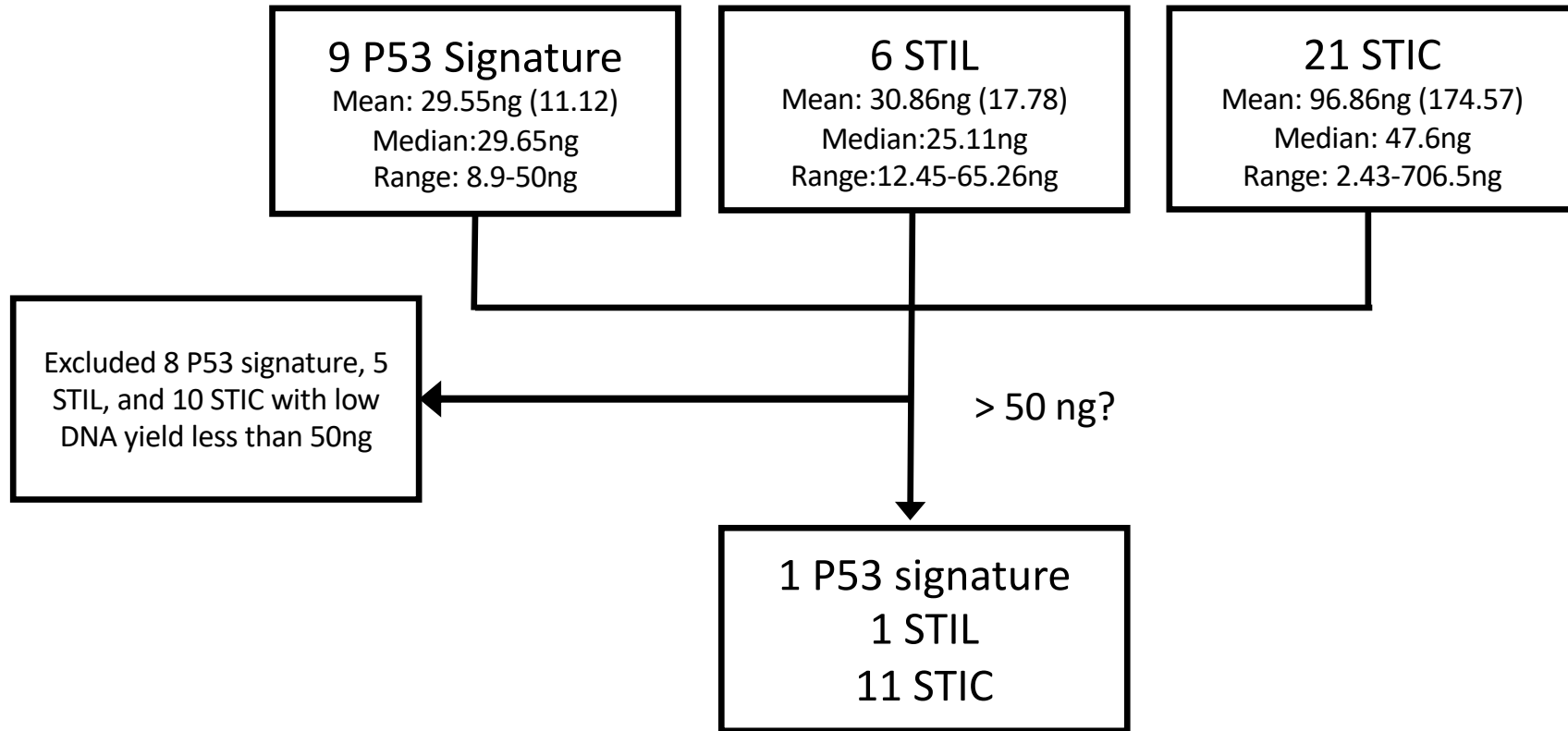


Supplementary Figure S1. Illumina MethylationEPIC β -value distributions of test LCM FFPE specimens as a function of input DNA mass.

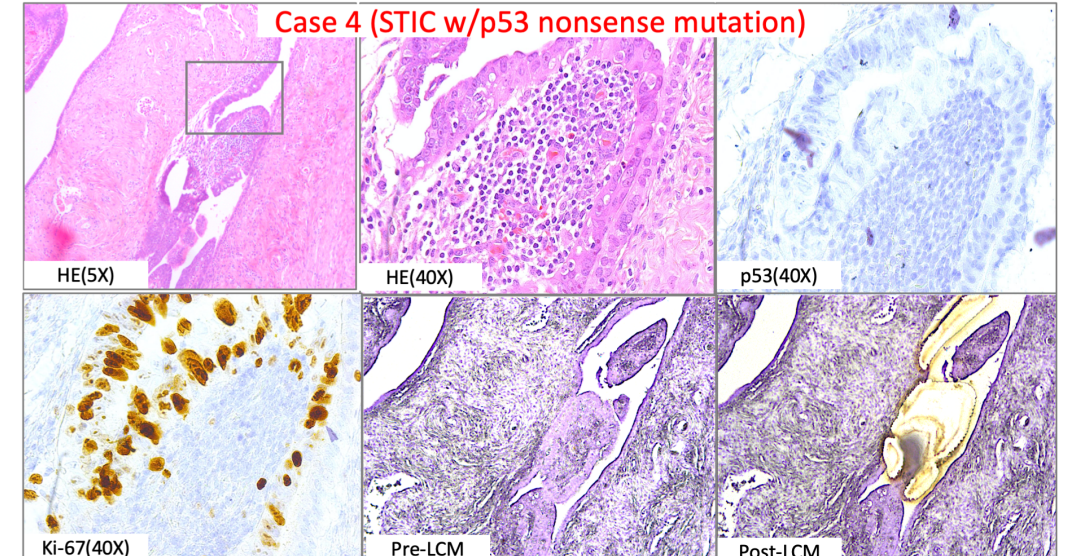
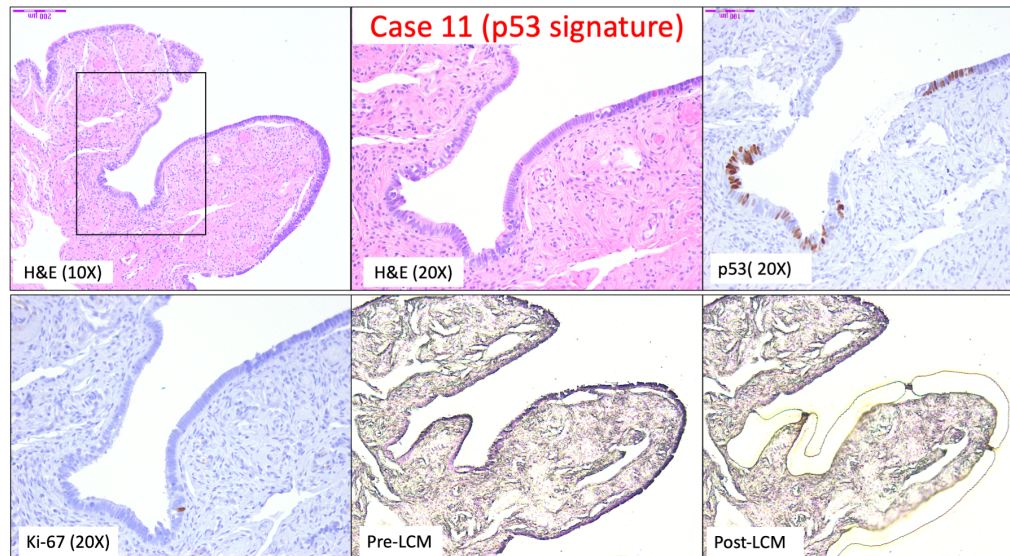
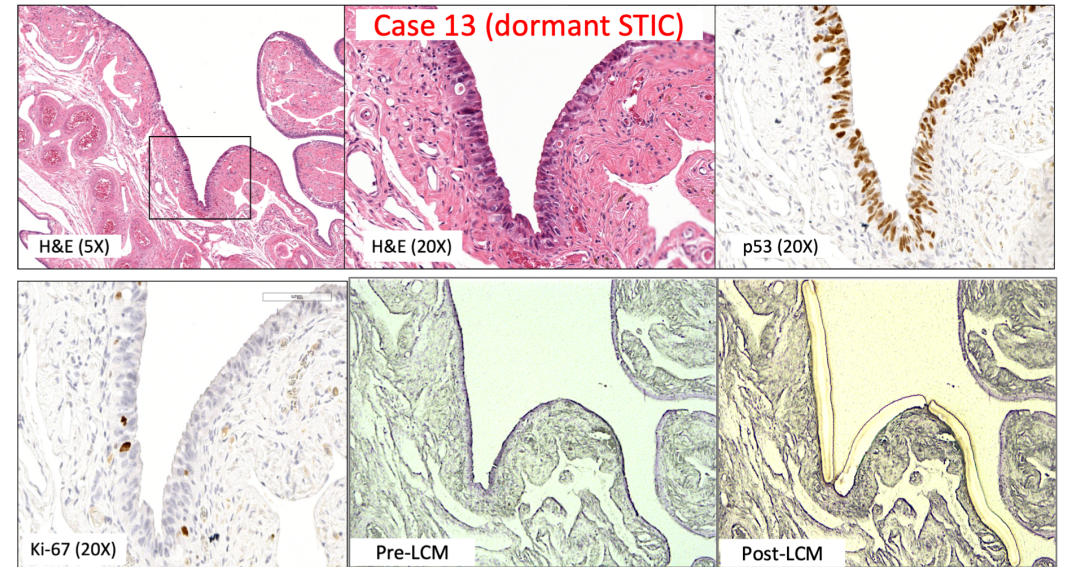
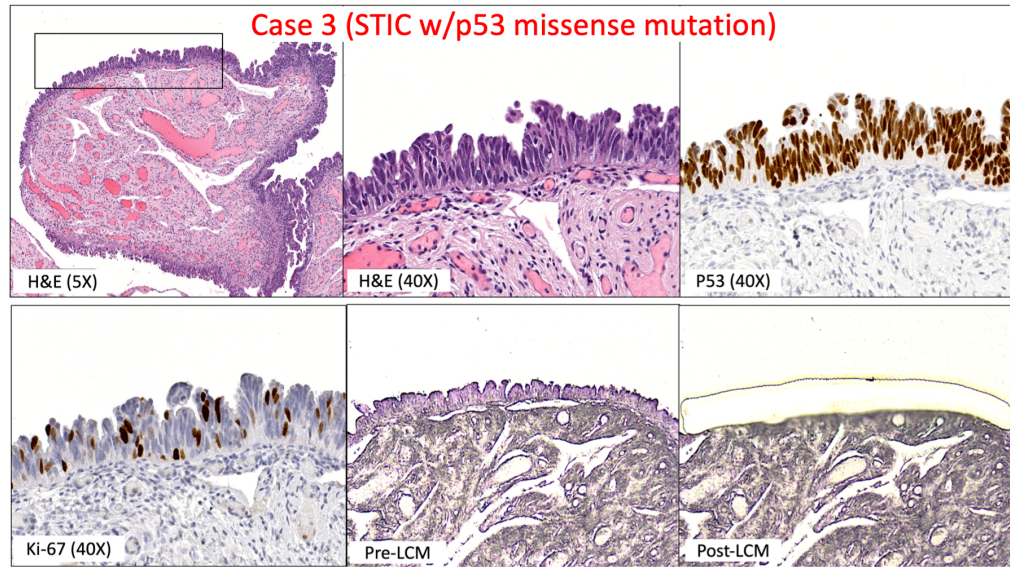
Cluster Dendrogram



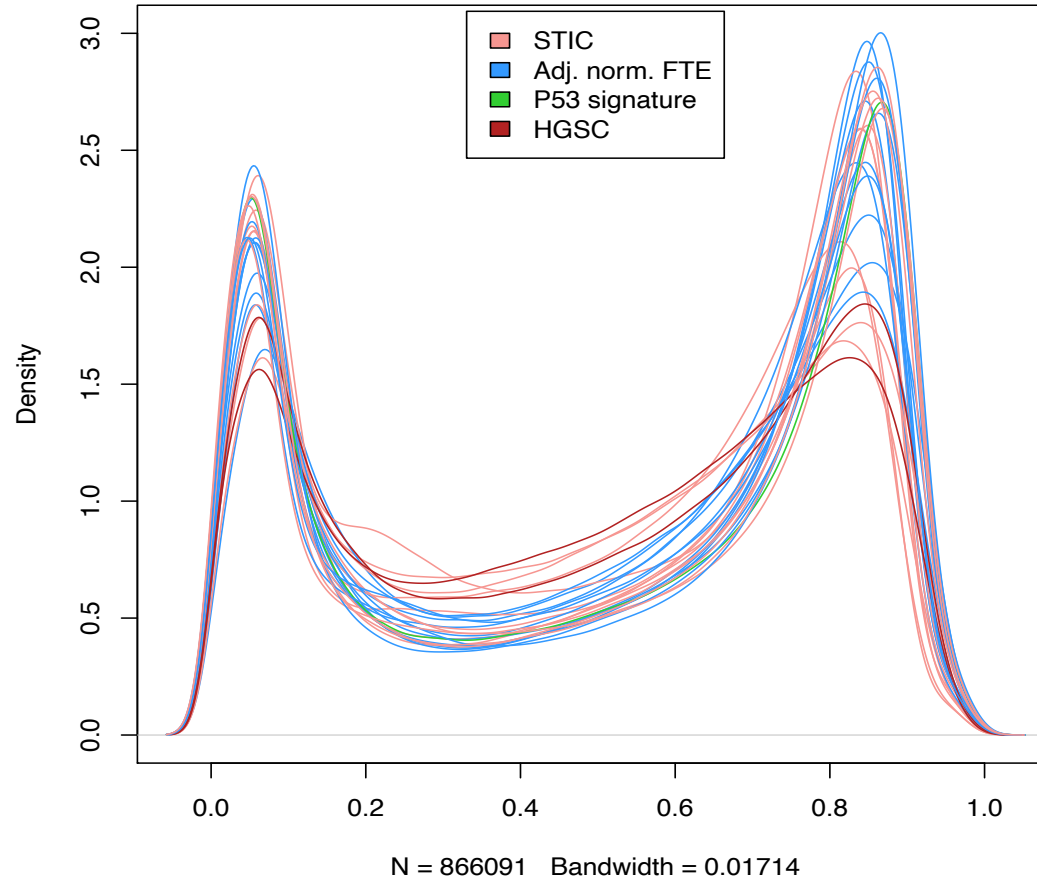
Supplementary Figure S2. Sample dendrogram of the test LCM FFPE specimens indicating methylation data variance with respect to input DNA mass.



Supplementary Figure S3. Schema outlining sample selection for MethylationEPIC analysis.



Supplementary Figure S4. Tissue sections of hematoxylin and eosin (H&E) staining, immunostaining of p53 and Ki-67 together with pre-LCM and post-LCM sections in four representative cases. STIC: serous tubal intraepithelial carcinoma.



Supplementary Figure S5. QC plot showing Illumina MethylationEPIC β -value distributions of samples included in the study.