

## Supplementary Tables and Figures

	Total Cohort Male (n = 78)	Total Cohort Female (n = 87)	<i>p</i> -value	IC-MPGN Male (n = 21)	IC-MPGN Female (n = 21)	<i>p</i> -value	C3G Male (n = 15)	C3G Female (n = 28)	<i>p</i> -value
<b>eGFR at Diagnosis (ml/min/1.73m<sup>2</sup>)</b>	62.9 (51.4 – 74.3)	80.6 (68.3 – 93.0)	0.0390*	88.2 (70.3 – 106.1)	65.1 (46.7 – 83.5)	NS (0.0652)	57.0 (31.6 – 82.4)	99.8 (81.5 – 118.2)	0.0068*
<b>eGFR at Last Follow-Up (ml/min/1.73m<sup>2</sup>)</b>	87.5 (77.1 – 97.9)	92.2 (82.0 – 106.4)	NS (0.4097)	94.5 (82.8 – 106.2)	94.1 (72.5 – 115.6)	NS (0.9694)	94.9 (62.6 – 127.3)	108.3 (90.7 – 125.9)	NS (0.4073)
<b>Urine Protein/Creatinine Ratio at Diagnosis (mg/mmol)</b>	522.6 (233.7 – 811.6)	302.4 (158.3 – 446.5)	NS (0.1529)	465.2 (31.2 – 899.1)	440.7 (178.5 – 703.0)	NS (0.9166)	315.5 (133.7 – 497.2)	382.6 (73.9 – 691.4)	NS (0.7637)
<b>Urine Protein/Creatinine Ratio at Last Follow-Up (mg/mmol)</b>	171.4 (35.9 – 306.9)	264.5 (67.1 – 461.9)	NS (0.4484)	165.4 (44.1 – 286.8)	239.6 (-38.2 – 517.4)	NS (0.5705)	79.2 (19.6 – 138.9)	138.5 (72.0 – 205.1)	NS (0.2534)
<b>Hypertension at Diagnosis</b>	54.0%	50.0%	NS (0.6394)	61.9%	50.0%	NS (0.5359)	53.3%	40.7%	NS (0.5249)
<b>Hypertension at Last Follow-Up</b>	69.8%	60.4%	NS (0.3944)	81.8%	57.1%	NS (0.2337)	57.1%	58.8%	NS (>0.9999)
<b>On Antihypertensives at Diagnosis</b>	66.2%	46.5%	0.0165*	75.0%	66.7%	NS (0.7337)	71.4%	33.3%	0.0262*
<b>On Antihypertensives at Last Follow-Up</b>	59.7%	69.8%	NS (0.1922)	76.2%	66.7%	NS (0.7337)	66.7%	78.6%	NS (0.4732)
<b>Antihypertensives Per Patient at Diagnosis</b>	2.2 (1.8 – 2.6)	1.9 (1.5 – 2.4)	NS (0.4186)	1.8 (0.96 – 2.6)	2.6 (1.7 – 3.6)	NS (0.1633)	2.1 (1.2 – 3.0)	1.3 (0.5 – 2.1)	NS (0.1726)
<b>Antihypertensives Per Patient at Last Follow-Up</b>	1.8 (1.4 – 2.2)	1.5 (1.3 – 1.8)	NS (0.3326)	1.8 (1.3 – 2.3)	1.8 (1.0 – 2.7)	NS (0.8858)	1.3 (0.5 – 2.2)	1.2 (0.8 – 1.6)	NS (0.7762)

Table S1.

	<b>Total Cohort Caucasian (n = 109)</b>	<b>Total Cohort non-Caucasian (n = 37)</b>	<b>p-value</b>	<b>IC-MPGN Caucasian (n = 27)</b>	<b>IC-MPGN non-Caucasian (n = 13)</b>	<b>p-value</b>	<b>C3G Caucasian (n = 22)</b>	<b>C3G non-Caucasian (n = 8)</b>	<b>p-value</b>
<b>eGFR at Diagnosis (ml/min/1.73m<sup>2</sup>)</b>	68.2 (58.0 – 78.4)	80.8 (61.6 – 99.9)	NS (0.2381)	63.6 (50.2 – 77.1)	97.1 (70.1 – 124.2)	0.0116*	84.0 (64.7 – 103.3)	103.6 (55.6 – 151.6)	NS (0.3155)
<b>eGFR at Last Follow-Up (ml/min/1.73m<sup>2</sup>)</b>	89.2 (79.3 – 99.0)	89.2 (73.2 – 105.2)	NS (0.9980)	89.3 (73.8 – 104.9)	99.0 (82.1 – 115.9)	NS (0.4457)	90.7 (71.1 – 110.3)	117.4 (77.0 – 157.7)	NS (0.1640)
<b>Urine Protein/Creatinine Ratio at Diagnosis (mg/mmol)</b>	448.8 (238.3 – 659.3)	364.2 (104.8 – 623.5)	NS (0.7169)	446.6 (138.0 – 755.2)	533.1 (55.4 – 1122.0)	NS (0.7933)	433.7 (13.5 – 853.8)	515.6 (308.1 – 1339)	NS (0.8259)
<b>Urine Protein/Creatinine Ratio at Last Follow-Up (mg/mmol)</b>	274.3 (95.9 – 452.7)	121.5 (75.4 – 167.6)	NS (0.3623)	231.2 (55.0 – 407.5)	83.3 (25.9 – 140.6)	NS (0.3535)	111.4 (36.8 – 186.0)	211.3 (120.4 – 302.2)	NS (0.1113)
<b>Hypertension at Diagnosis</b>	49.5%	59.5%	NS (0.3436)	59.3%	53.8%	NS (>0.9999)	36.4%	62.5%	NS (0.2420)
<b>Hypertension at Last Follow-Up</b>	69.0%	76.0%	NS (0.6043)	70.6%	87.5%	NS (0.6237)	87.5%	71.4%	NS (0.5692)
<b>On Antihypertensives at Diagnosis</b>	54.1%	58.3%	NS (0.7026)	70.4%	66.7%	NS (>0.9999)	40.9%	50.0%	NS (0.6976)
<b>On Antihypertensives at Last Follow-Up</b>	67.0%	62.2%	NS (0.6890)	74.1%	61.5%	NS (0.4760)	86.4%	75.0%	NS (0.5894)
<b>Antihypertensives/Patient at Diagnosis</b>	2.4 (2.0 – 2.8)	2.0 (1.4 – 2.5)	NS (0.2209)	2.3 (1.4 – 3.1)	2.4 (1.2 – 3.6)	NS (0.8749)	2.9 (1.9 – 3.7)	1.0 (0.06 – 1.9)	0.0078*
<b>Antihypertensives/Patient at Last Follow-Up</b>	1.7 (1.5 – 2.0)	2.1 (1.5 – 2.7)	NS (0.2404)	1.8 (1.2 – 2.5)	1.9 (1.0 – 2.7)	NS (0.9320)	1.5 (0.9 – 2.1)	2.0 (0.48 – 3.5)	NS (0.4454)

**Table S2.**

# Survival Without eGFR < 30 mL/min/1.73m<sup>2</sup>, 50% Reduction in eGFR, or Kidney Replacement Therapy

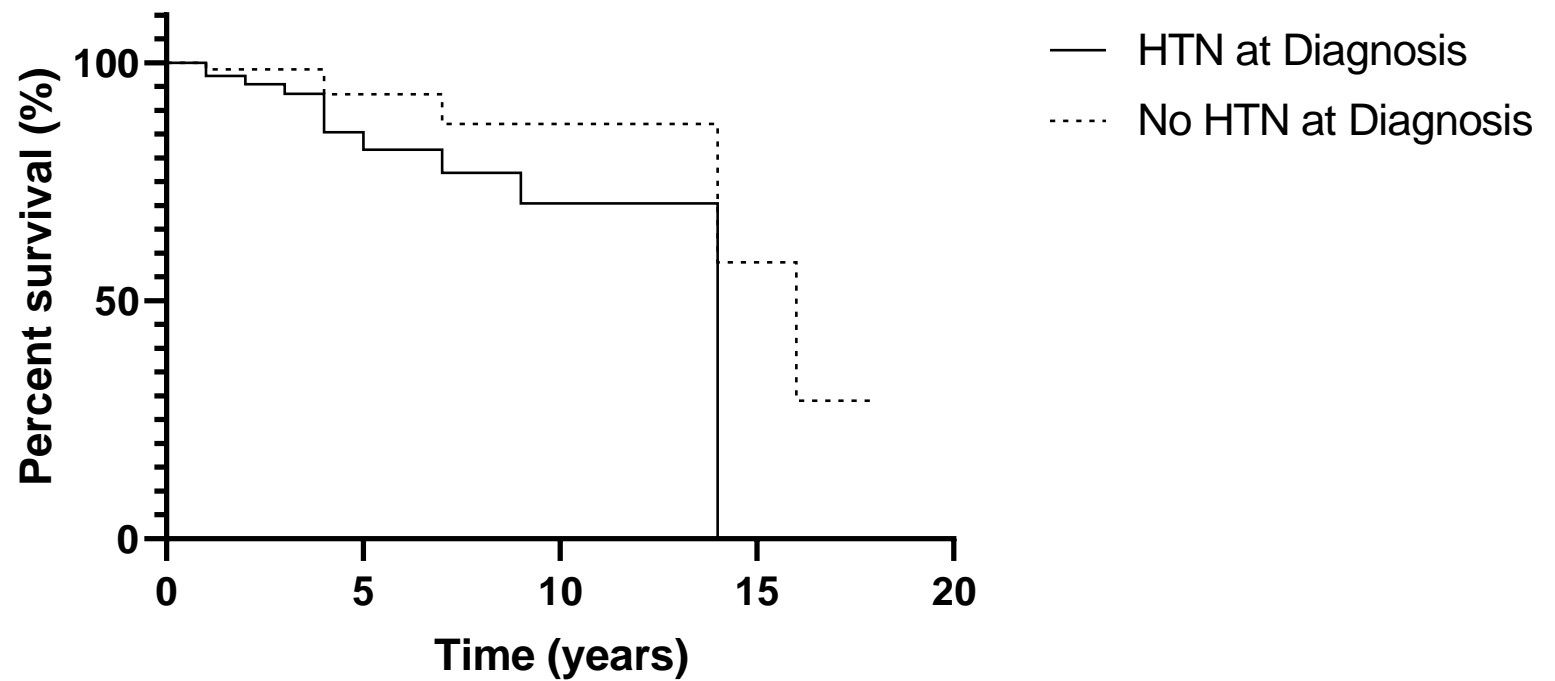


Figure S1.

## Strobe Checklist

<b>Strobe Checklist Item Number</b>	<b>Manuscript Page</b>
<b>Title and Abstract</b>	
1	2
<b>Introduction</b>	
2	4-6
3	5-6
<b>Methods</b>	
4	6-7
5	6-7
6	6-7
7	7-8
8	7-8
9	6-7
10	6
11	8
12	8
<b>Results</b>	
13	8-9
14	9
15	9-11
16	9-11
17	9-11
<b>Discussion</b>	
18	11-12
19	17-18
20	11-18
21	17-18