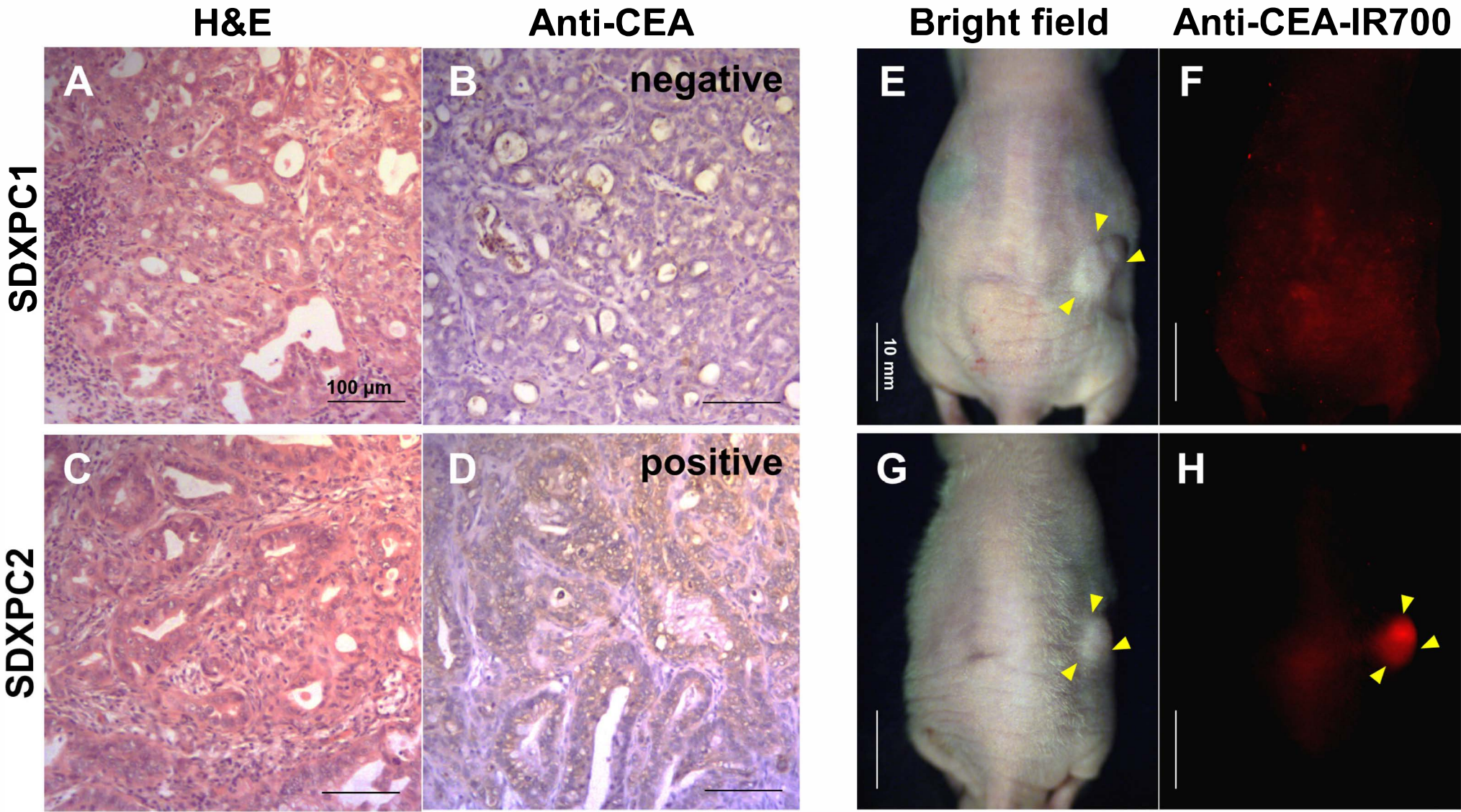


Supplemental Figure 2



Characterization of the patient-derived pancreatic tumors. Both SDXPC1 and SDXPC2 were diagnosed as moderately differentiated adenocarcinoma with H & E staining (A and C). SDXPC2 was strongly stained with anti-CEA antibody (D), but the signal was minimally detected in SDXPC1 (A). Scale bars: 100 μ m. (E - H) Whole body images of subcutaneous pancreatic tumors labeled with anti-CEA-IR700. Anti-CEA-IR700 (50 μ g) was injected from the tail vein of the mice with subcutaneous SDXPC1 or SDXPC2 tumors. Twenty-four hours later, whole body images were obtained with the OV100 (Olympus). Yellow arrow heads indicate subcutaneous tumors. SDXPC2 was brightly labeled with anti-CEA-IR700 (H), but the specific fluorescence signal from SDXPC1 labeled with anti-CEA-IR700 was minimally detected (F). Scale bars: 10 mm