

1 **Interindividual differences in human intestinal microbial conversion**
2 **of (-)-epicatechin to bioactive phenolics**

3 Chen Liu,^{*,†} Jacques Vervoort,[‡] Karsten Beekmann,^{†,§} Marta Baccaro,[†]
4 Lenny Kamelia,[†] Sebas Wesseling,[†] Ivonne M.C.M. Rietjens[†]

5 [†] Division of Toxicology, Wageningen University and Research, Wageningen, The Netherlands

6 [‡] Laboratory of Biochemistry, Wageningen University and Research, Wageningen, The
7 Netherlands

8 [§] Present address: Wageningen Food Safety Research, PO Box 230, 6700 AE Wageningen, The
9 Netherlands

10

11 **Supporting information**

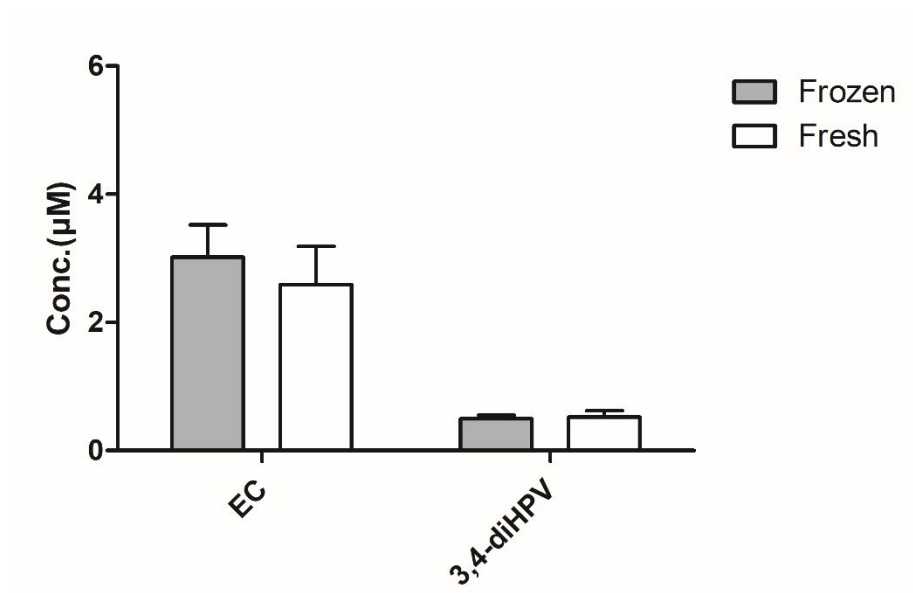
12

13 **Table S1.** The limit of detection (LOD) and the limit of quantification (LOQ) of EC
 14 and its major colonic metabolites in LC-TQ-MS.

Compound	EC	3,4- diHP V	3-HPV	3,4- diHPV A	3- HPV A	3,4- diHPPA	3- HPPA	3- HPAA	4- HPA A	Catechol
LOD (nM)	88.05	27.83	50.89	25.07	31.60	443.15	468.66	67.20	25.83	74.56
LOQ (nM)	266.8	84.32	154.2	75.98	95.76	1342.8	1420.1	203.6	78.28	225.93
	3		0			7	8	4		

15

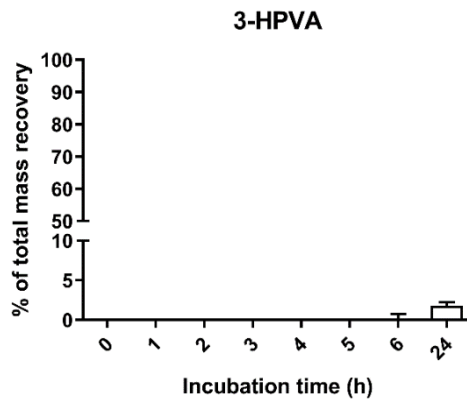
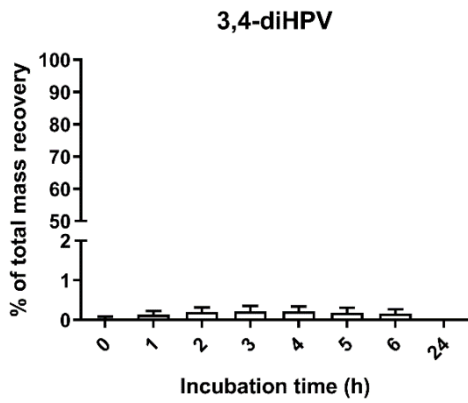
16



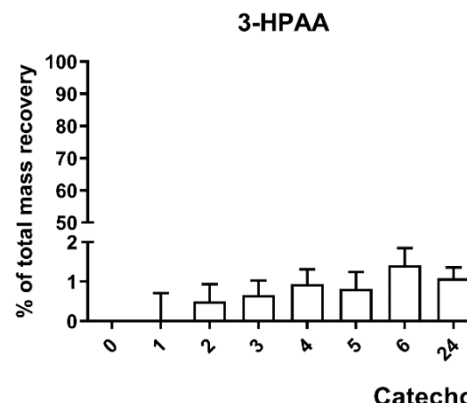
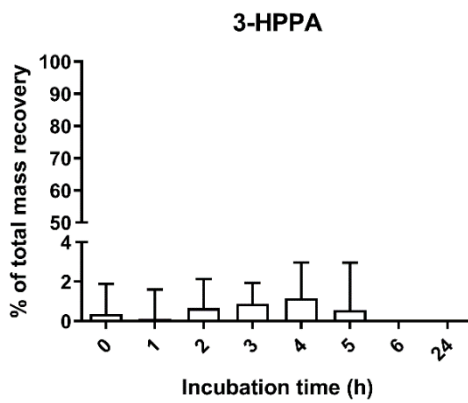
17

18 **Figure S1.** Residual EC and 3,4-diHPV formed in incubations with the fresh faecal
19 slurry and the same faecal slurry but frozen for 1 week prior to incubation.

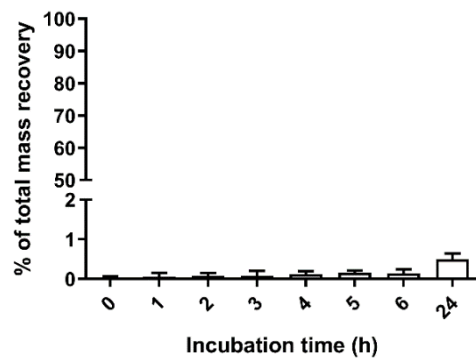
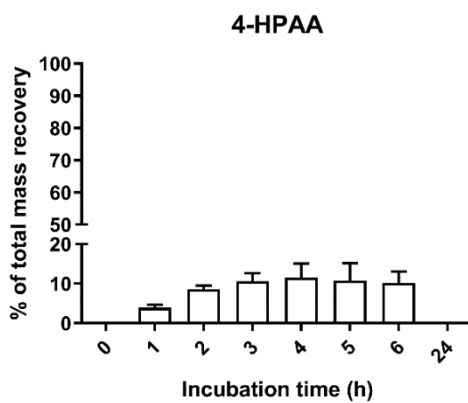
20



21



22



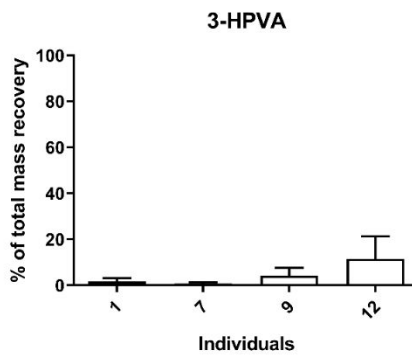
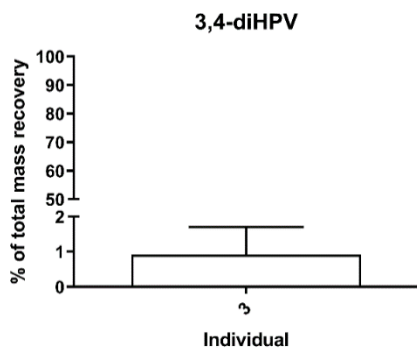
23

24 **Figure S2.** Phenolic compounds quantified in the negative control samples (without

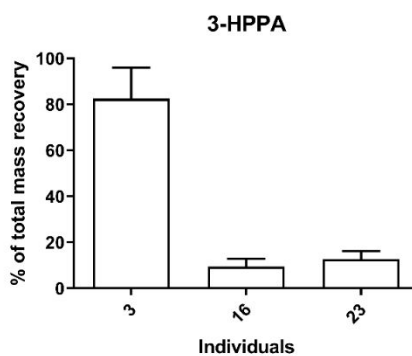
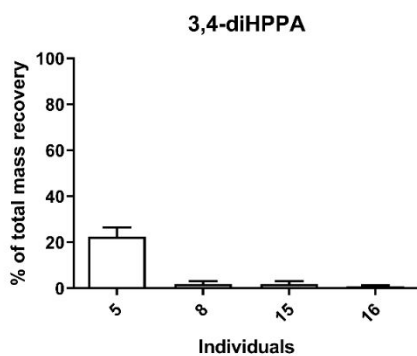
25 adding EC in pooled faecal incubations) at different incubation timepoints. Results are

26 shown as mean \pm SD from 3 independent incubations.

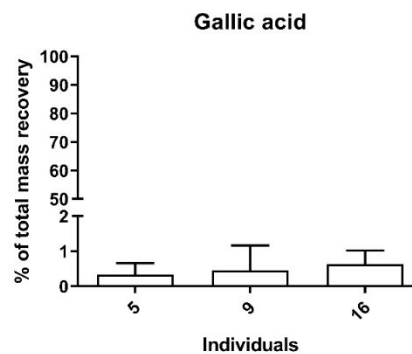
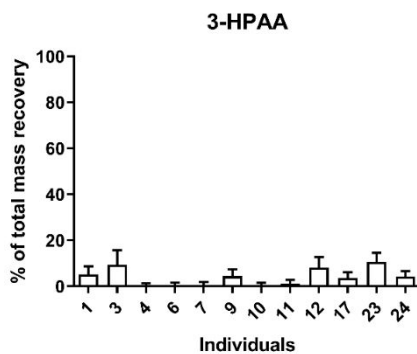
27



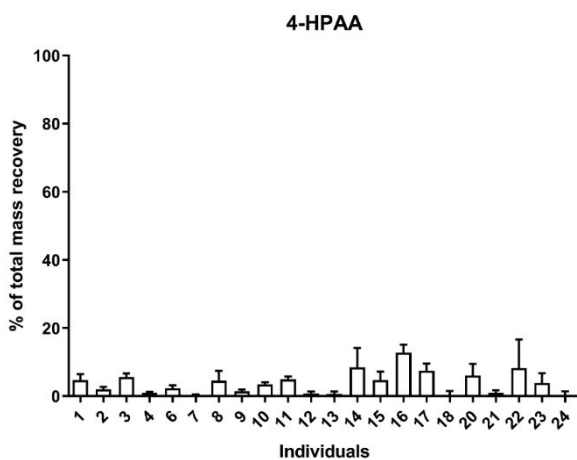
28



29



30



31

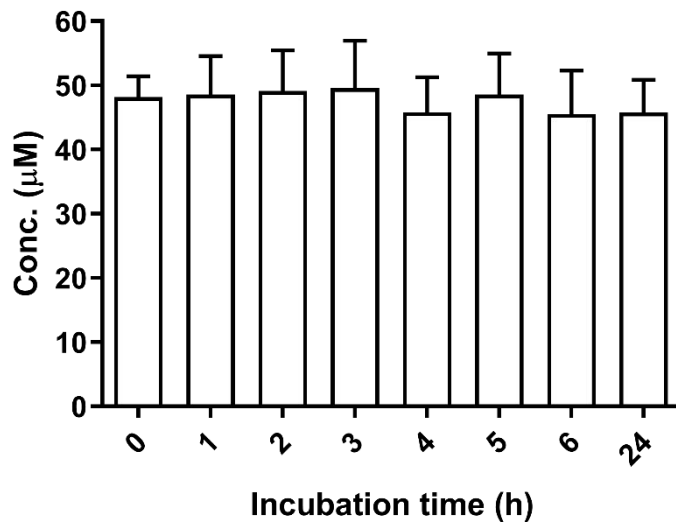
32 **Figure S3.** Phenolic compounds quantified in different individuals in the negative

33 control (without adding EC in individual faecal incubations) at 2 h of incubations.

34 Results are shown as mean \pm SD from 3 independent incubations. Values below the

35 LOD are not presented.

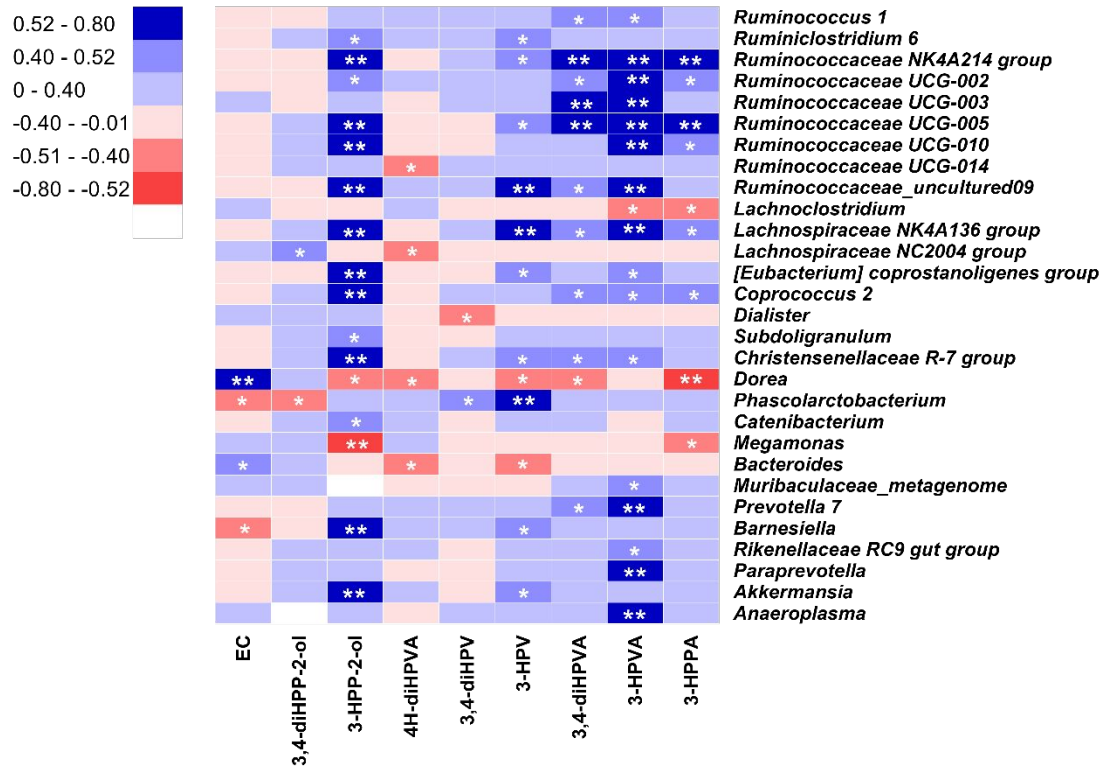
36



37

38 **Figure S4.** EC contents of blank control (incubated without faecal slurry) at different
39 incubation timepoints. Results are shown as mean \pm SD from three independent
40 incubations.

41



46

47 **Figure S6.** Spearman correlations between the taxon abundances of bacterial genera

48 and the concentration of residual EC and 8 EC microbial metabolites present in

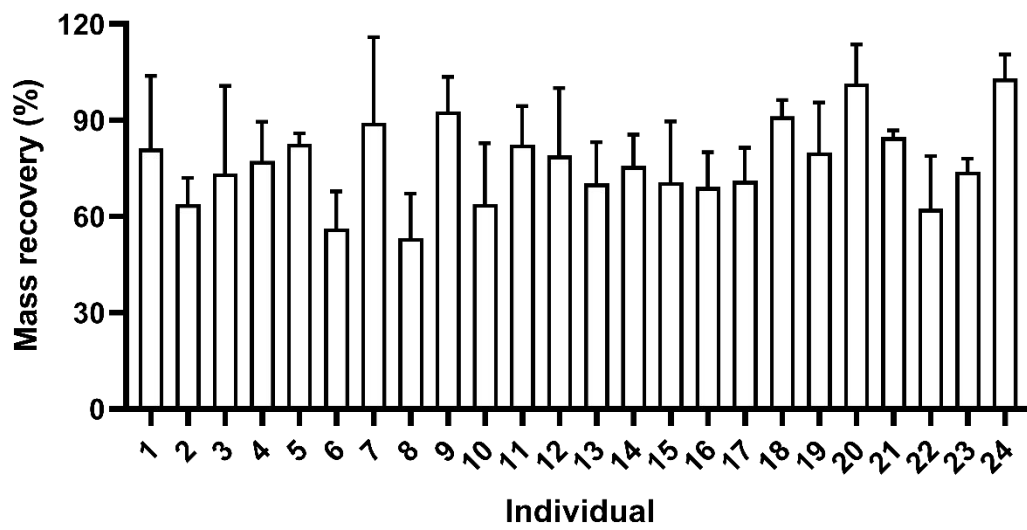
49 incubations with faecal slurries from 24 individuals at 2 h. The sign and strength of the

50 Spearman correlation coefficients are represented as colours (blue: positive; red:

51 negative). The significances of the correlations are indicated by asterisks: *P < 0.05,

52 **P < 0.01.

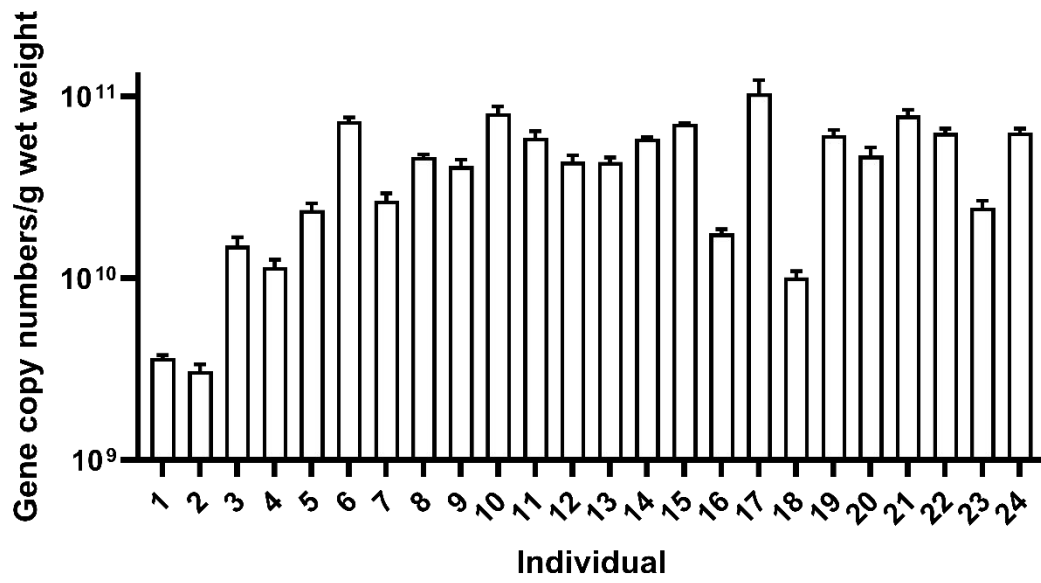
53



54

55 **Figure S7.** Total mass recoveries of 24 individuals for their EC faecal incubations at t
 56 = 2 h. Results are shown as mean \pm SD from three independent incubations.

57



58

59 **Figure S8.** Bacterial load of 24 individuals, expressed as gene copy numbers per gram

60 of wet weight of faecal slurry (mean value \pm SD, n = 3)