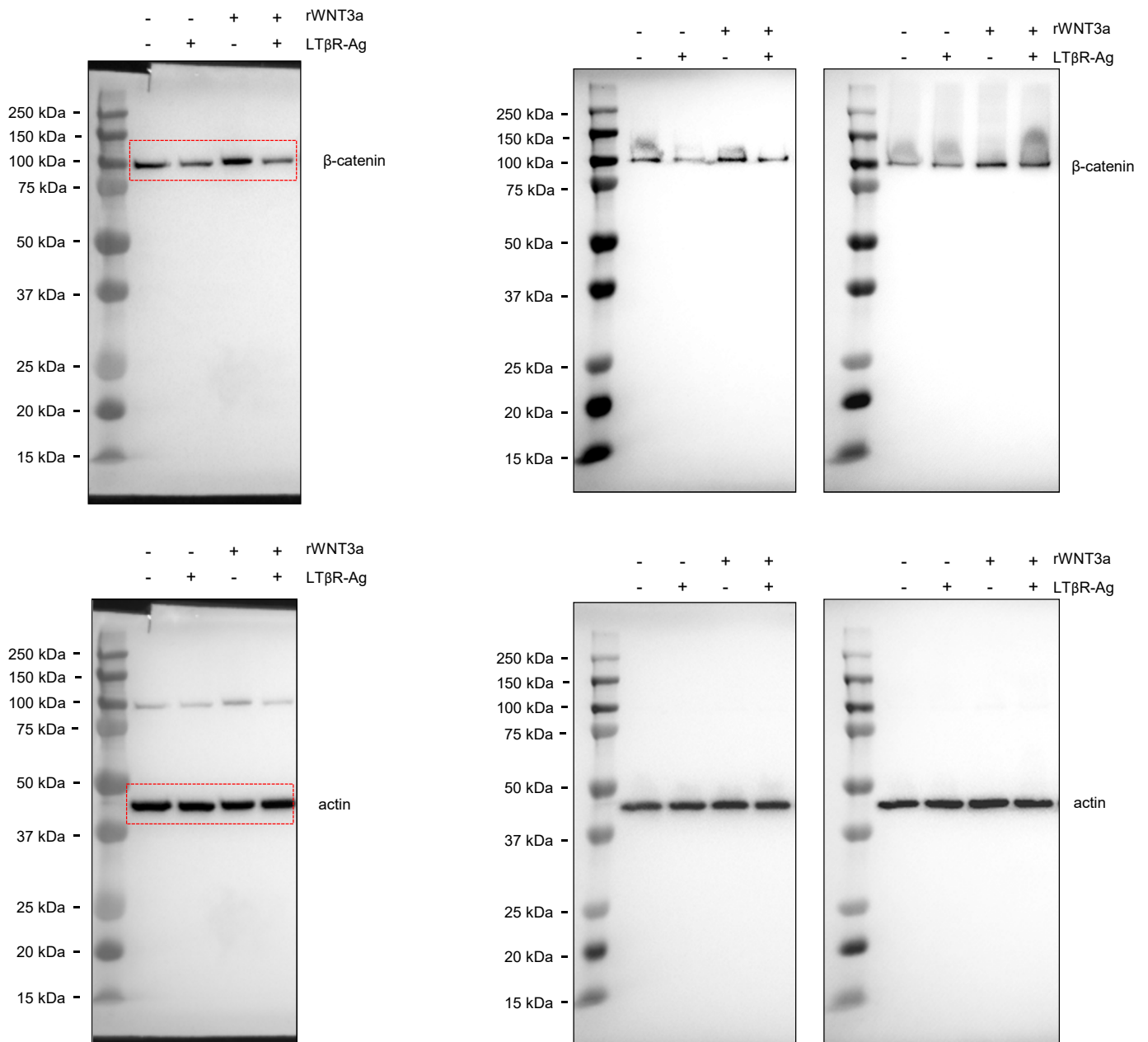


### Fig. 3h

The red box indicates cropped area used in the figure.

### Independent repeats

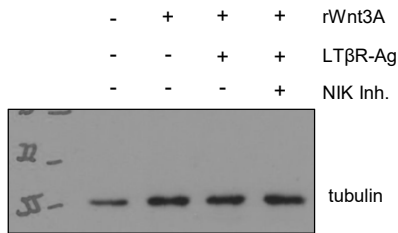
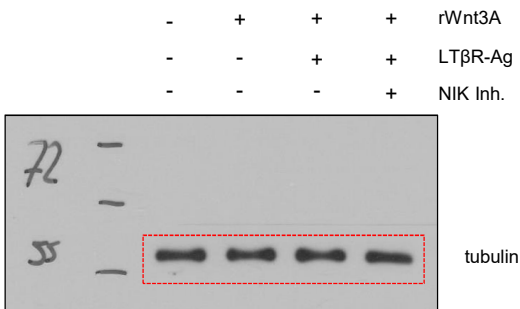
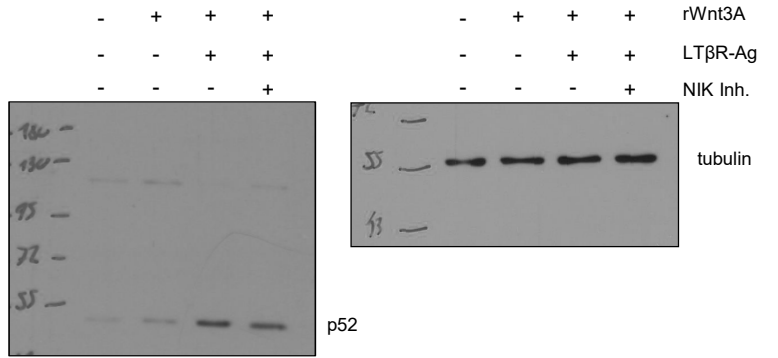
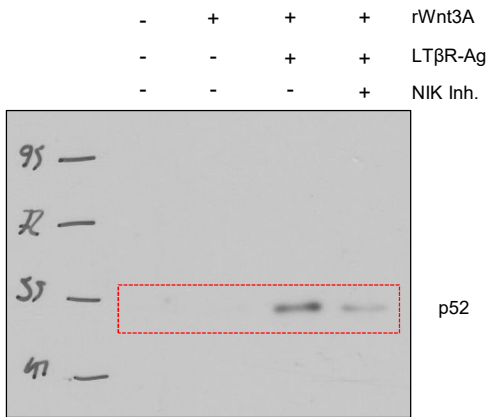
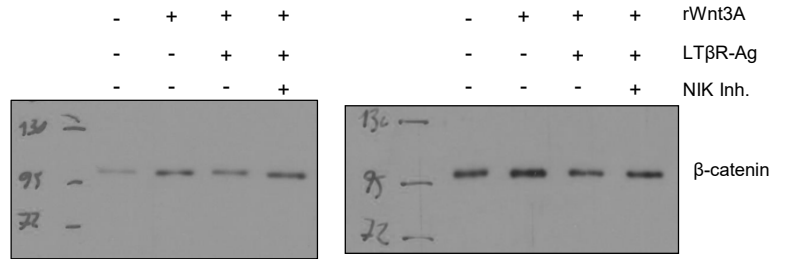
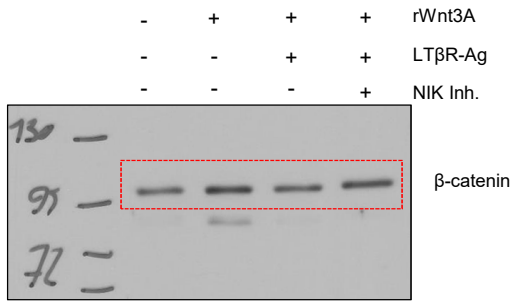


The same membrane was blotted for  $\beta$ -catenin and actin.

**Fig. 3i**

The red box indicates cropped area used in the figure.

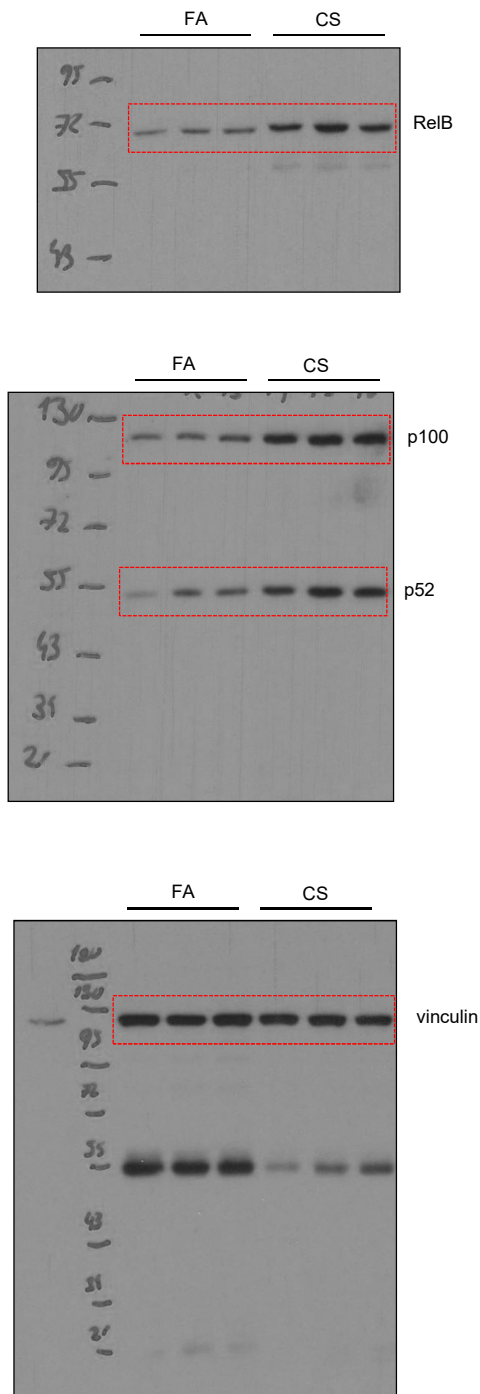
Independent repeats



The same membrane was blotted for β-catenin, p52 and tubulin.

## Extended Data Fig. 1h

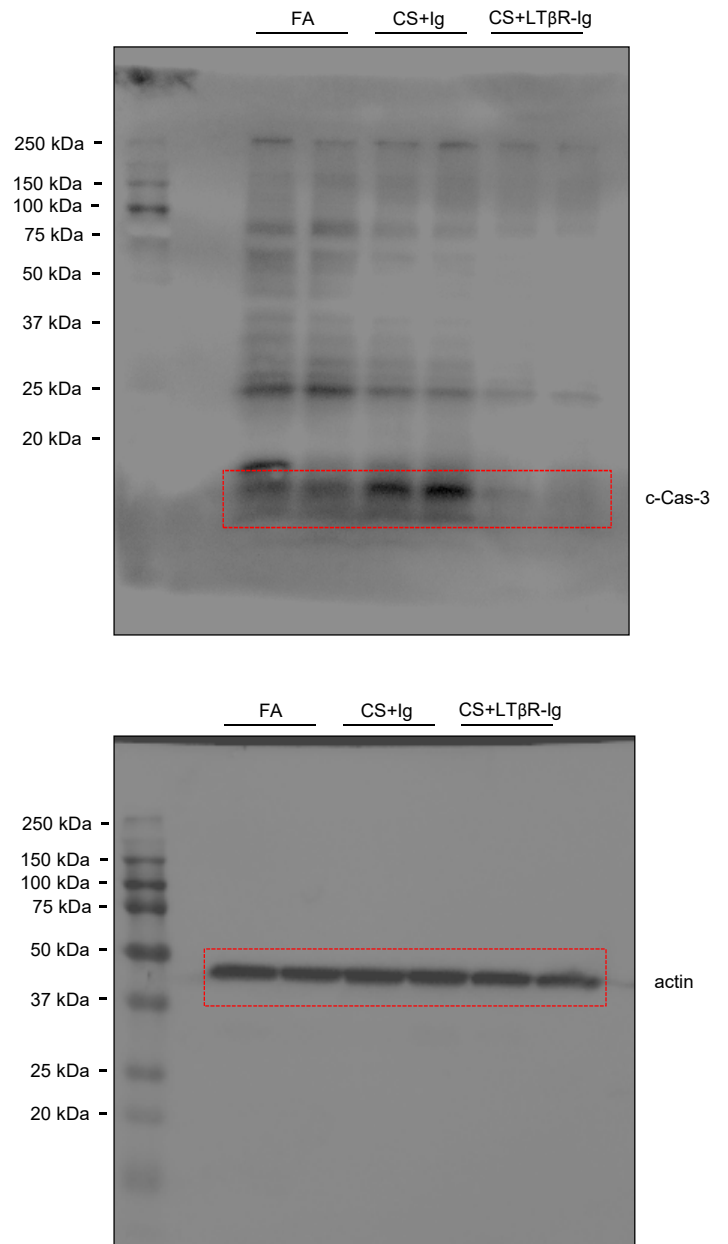
The red box indicates cropped area used in the figure.



The same membrane was blotted for RelB, p52 (and p100) and vinculin.

## Extended Data Fig. 8i

The red box indicates cropped area used in the figure.

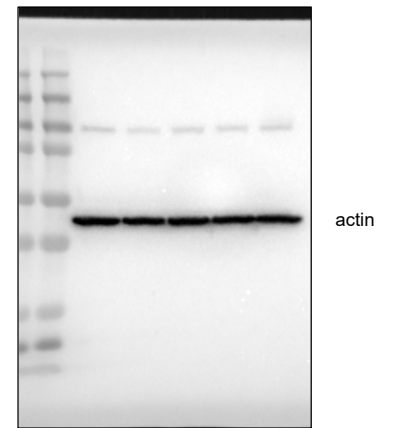
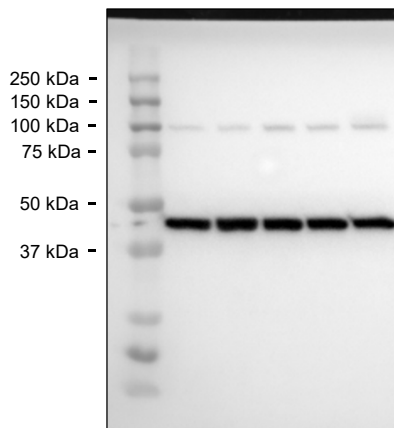
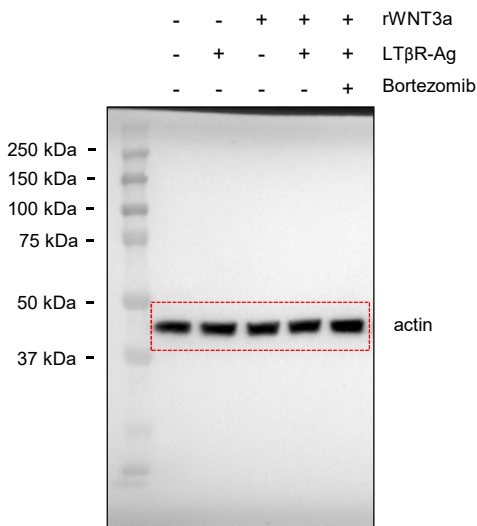
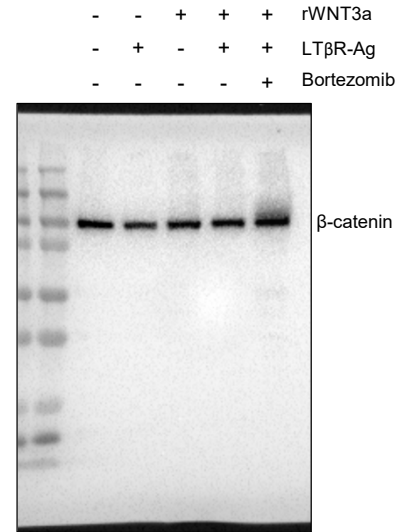
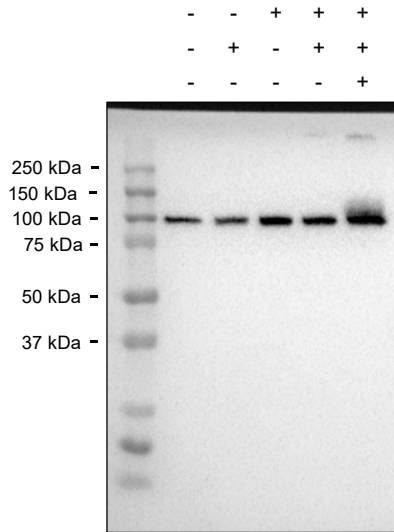
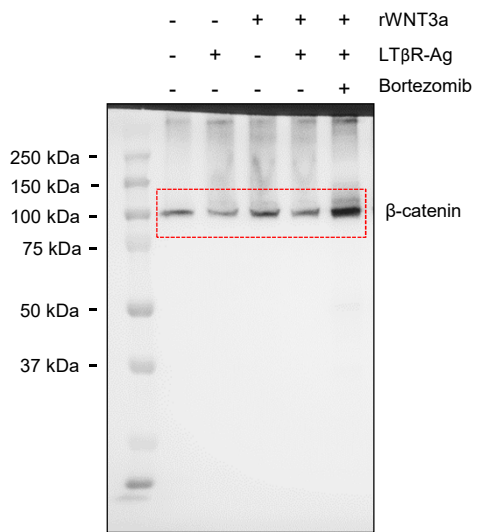


The same membrane was blotted for cleaved caspase 3 and actin.

# Extended Data Fig. 9h

The red box indicates cropped area used in the figure.

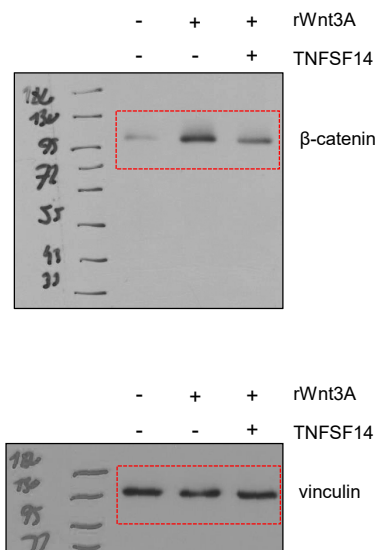
## Independent repeats



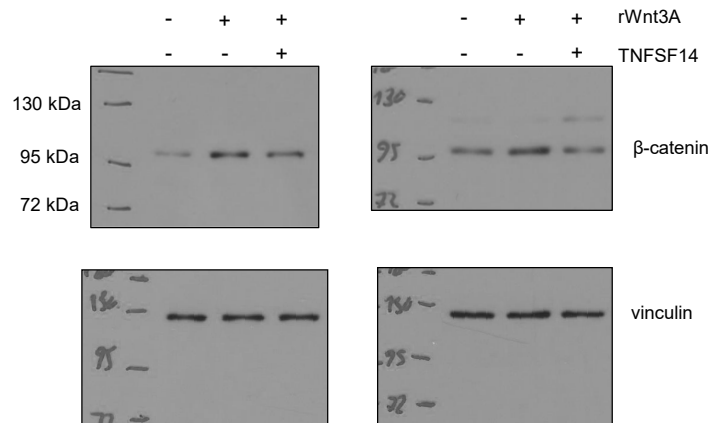
The same membrane was blotted for β-catenin and actin.

# Extended Data Fig. 9j

The red box indicates cropped area used in the figure.



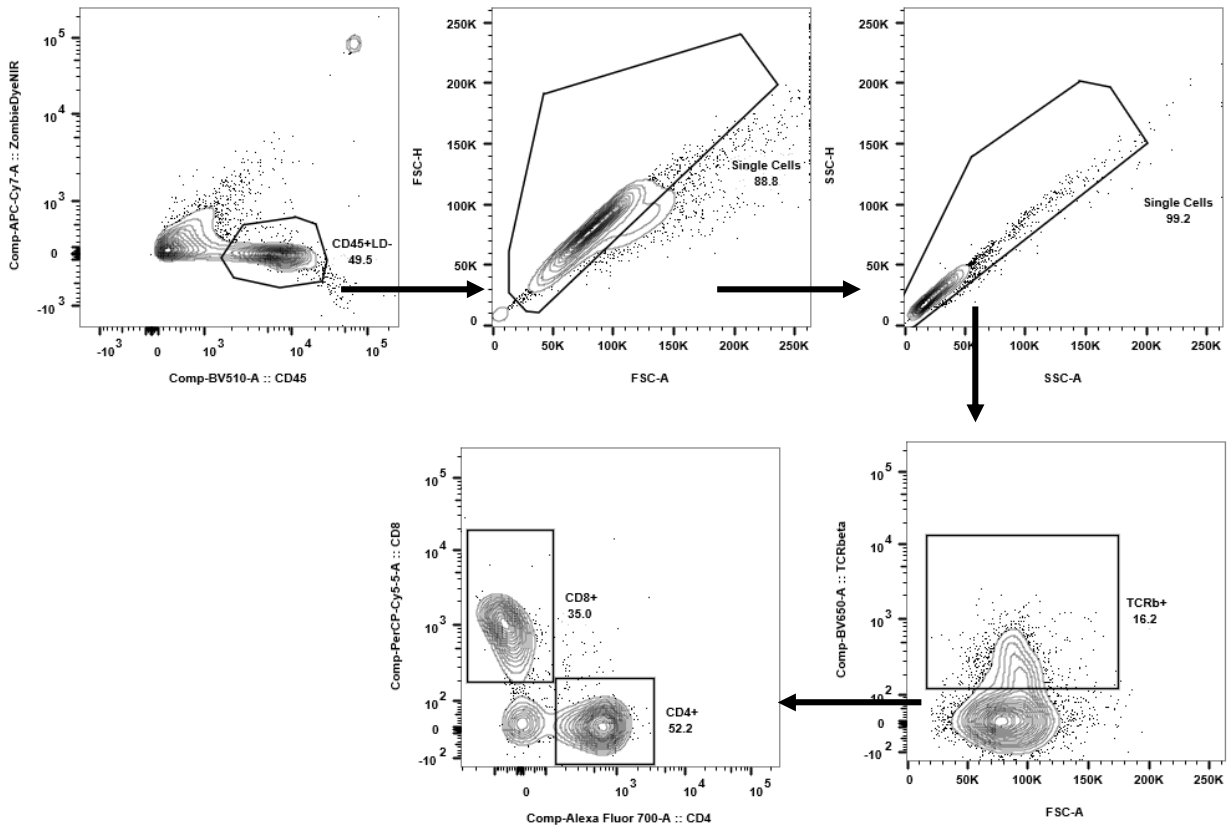
## Independent repeats



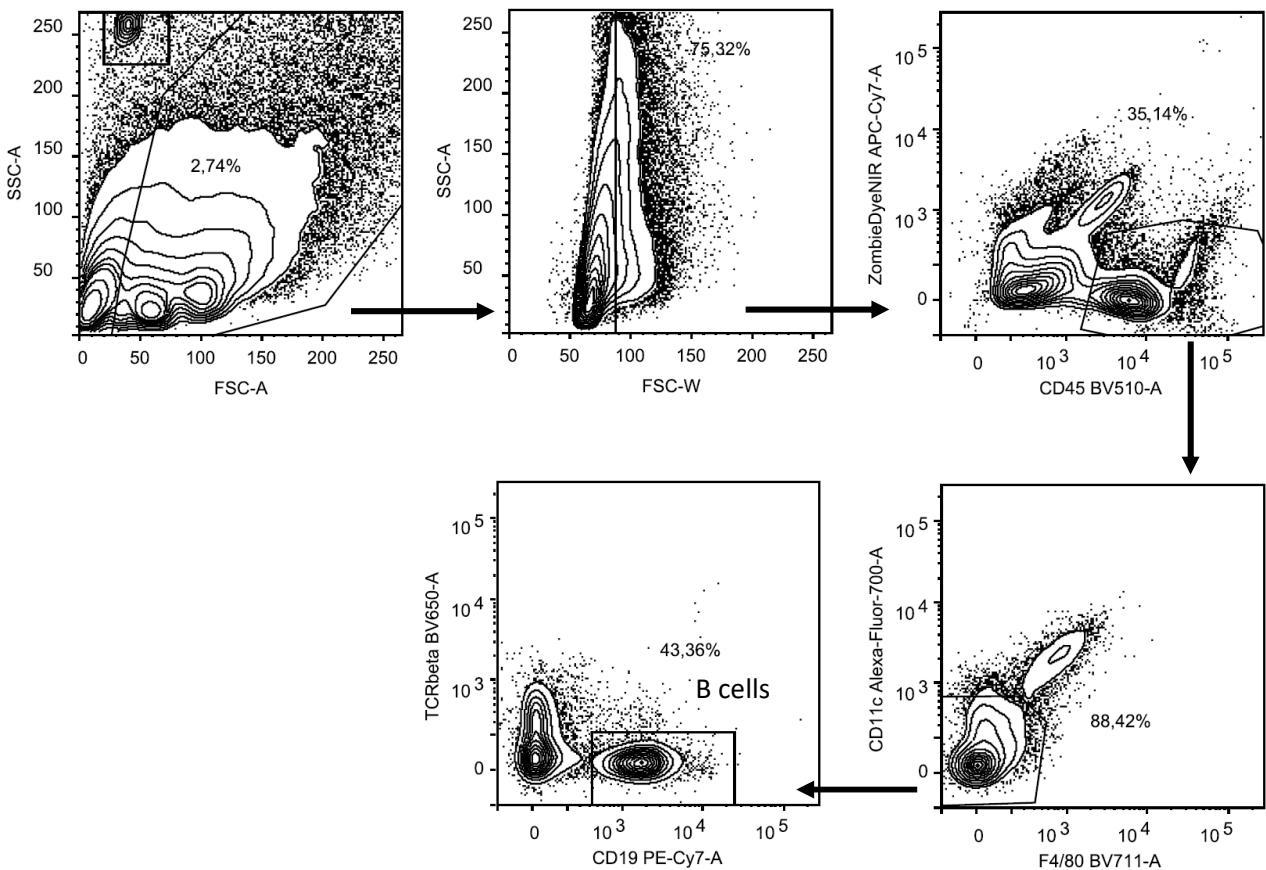
The same membrane was blotted for  $\beta$ -catenin and vinculin.

# Gating strategy for FACS analysis of lung (Extended Data Fig 2)

## T cell gating:



## B cell gating:



# Gating strategy for FACS analysis of lung (Extended Data Fig 2)

Myeloid cell gating:

