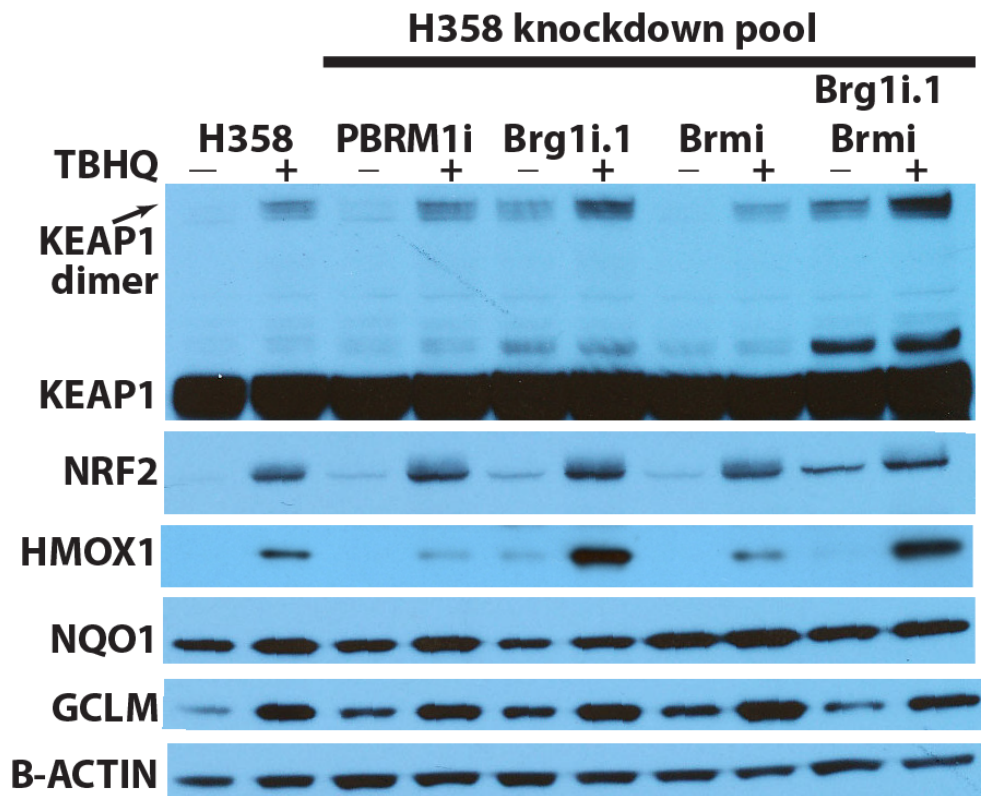


**Supplementary Figure 1. BRG1 deficiency activates transcription of a subset of NRF2 target genes in second H358 BRG1 knockdown cell lines.** PBRM1, a member of the PBAF SWI/SNF complex, BRG1 and/or BRM were knocked down in H358 cell line using a lentiviral system or transfection to deliver shRNA. NRF2 target gene protein expression was measured by western blot analysis using whole cell lysates (30µg). B-ACTIN was used to equalize loading.



**Supplementary Figure 2. Western Blot of BRG1 and BRM knockout samples used for RNA-seq.** Total cellular proteins were isolated from the same samples used for RNA-seq analyses in Figure 4 and assessed by western blotting to confirm loss of BRG1 and BRM expression as well as altered expression of NRF2 targets. \*\* - non-specific cross reacting band.

