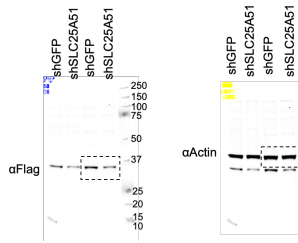
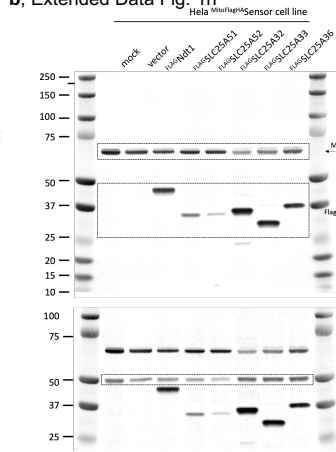


**Western blots**

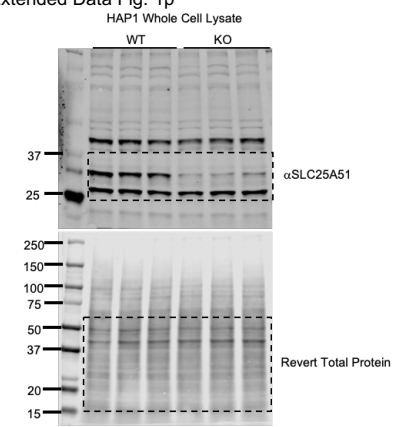
**a, Extended Data Fig. 1e**



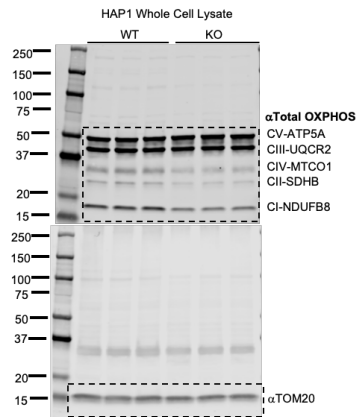
**b, Extended Data Fig. 1h**



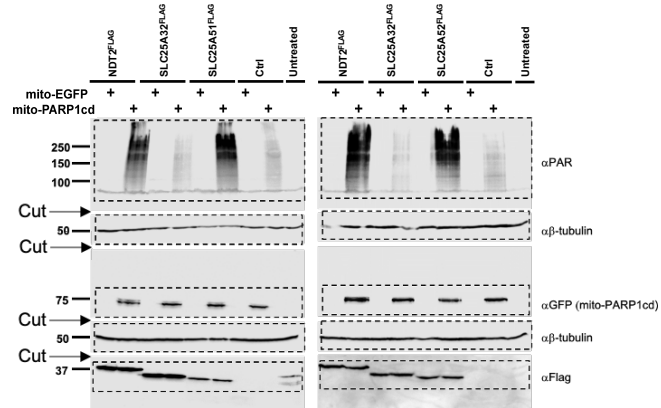
**c, Extended Data Fig. 1p**



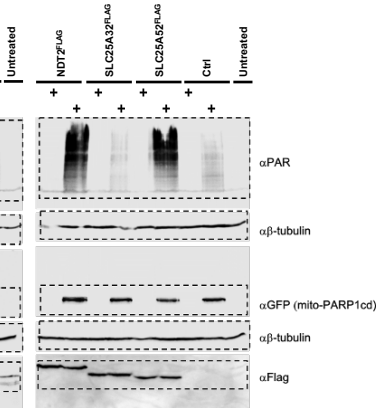
**e, Fig. 2i**



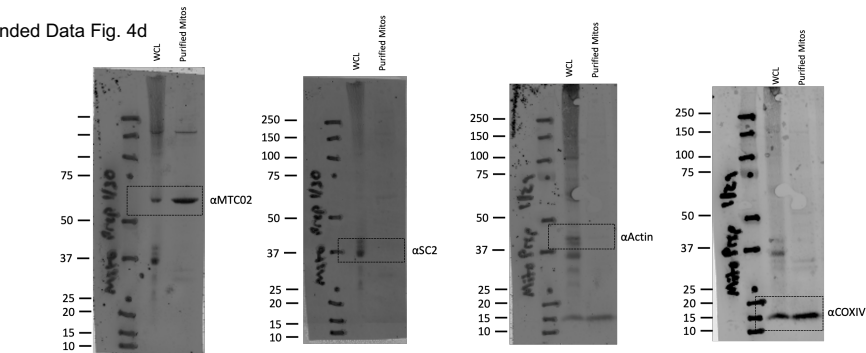
**f, Fig. 3f**



**g, Fig. 3g**

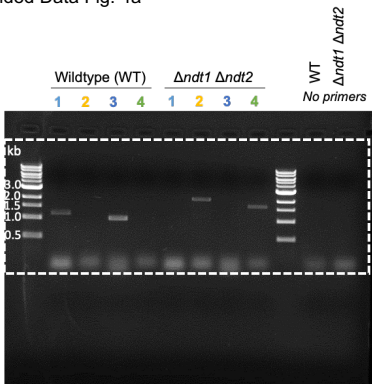


**h, Extended Data Fig. 4d**

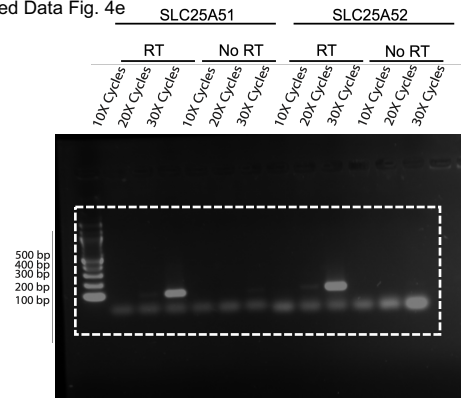


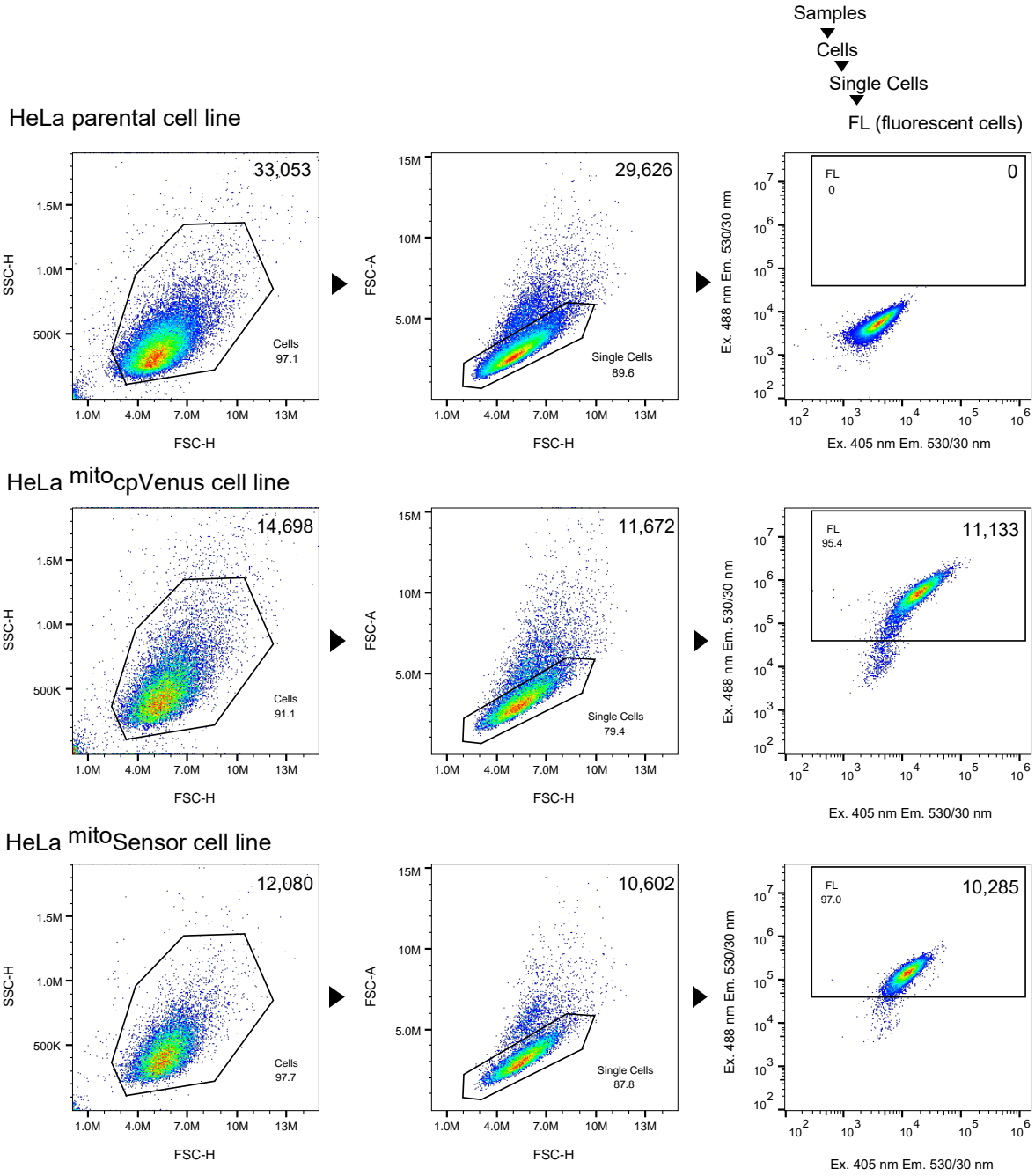
**DNA agrose gels**

**i, Extended Data Fig. 4a**



**j, Extended Data Fig. 4e**





**Supplementary Figure 2. Gating strategy for flow cytometry analysis**