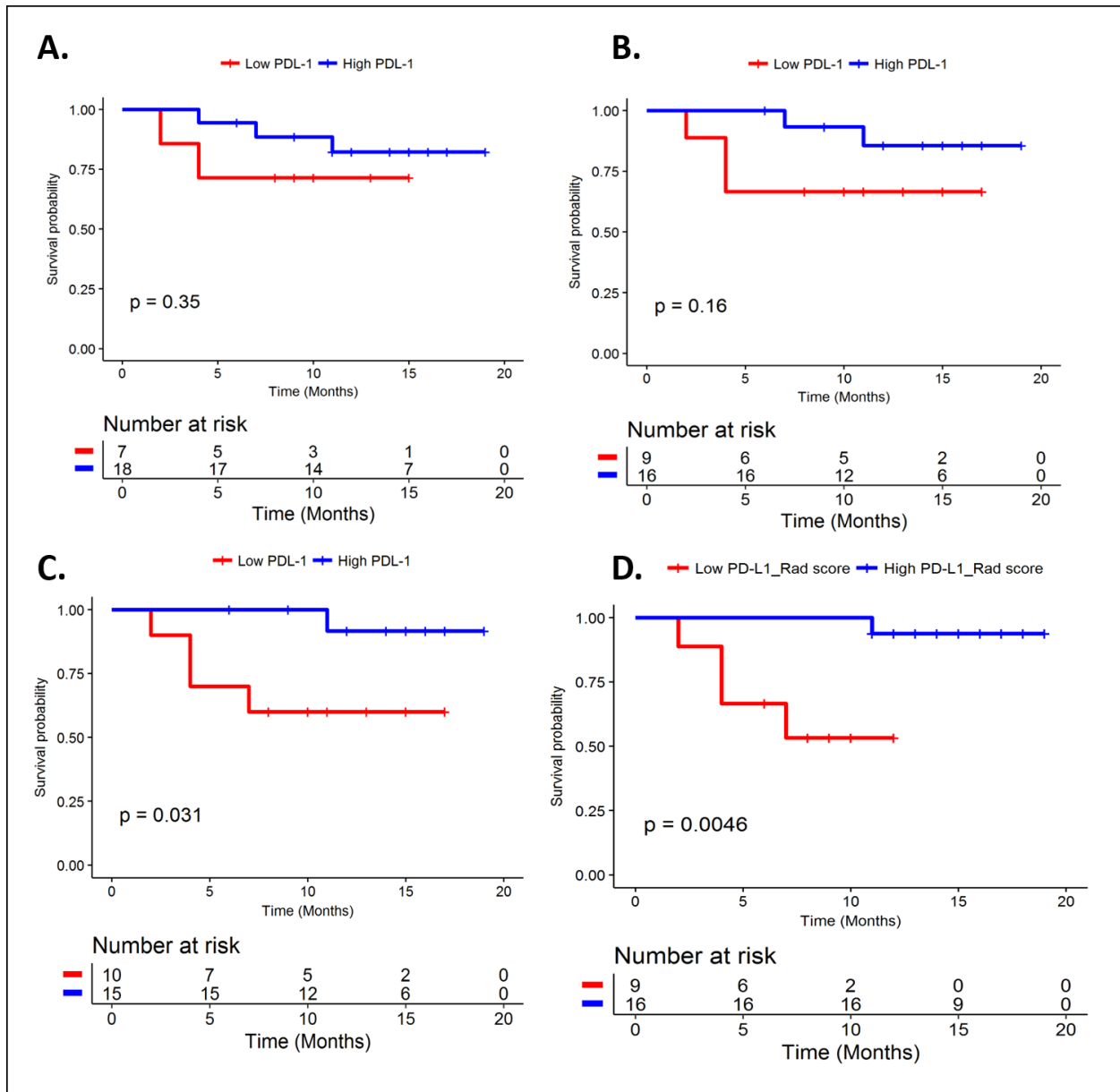
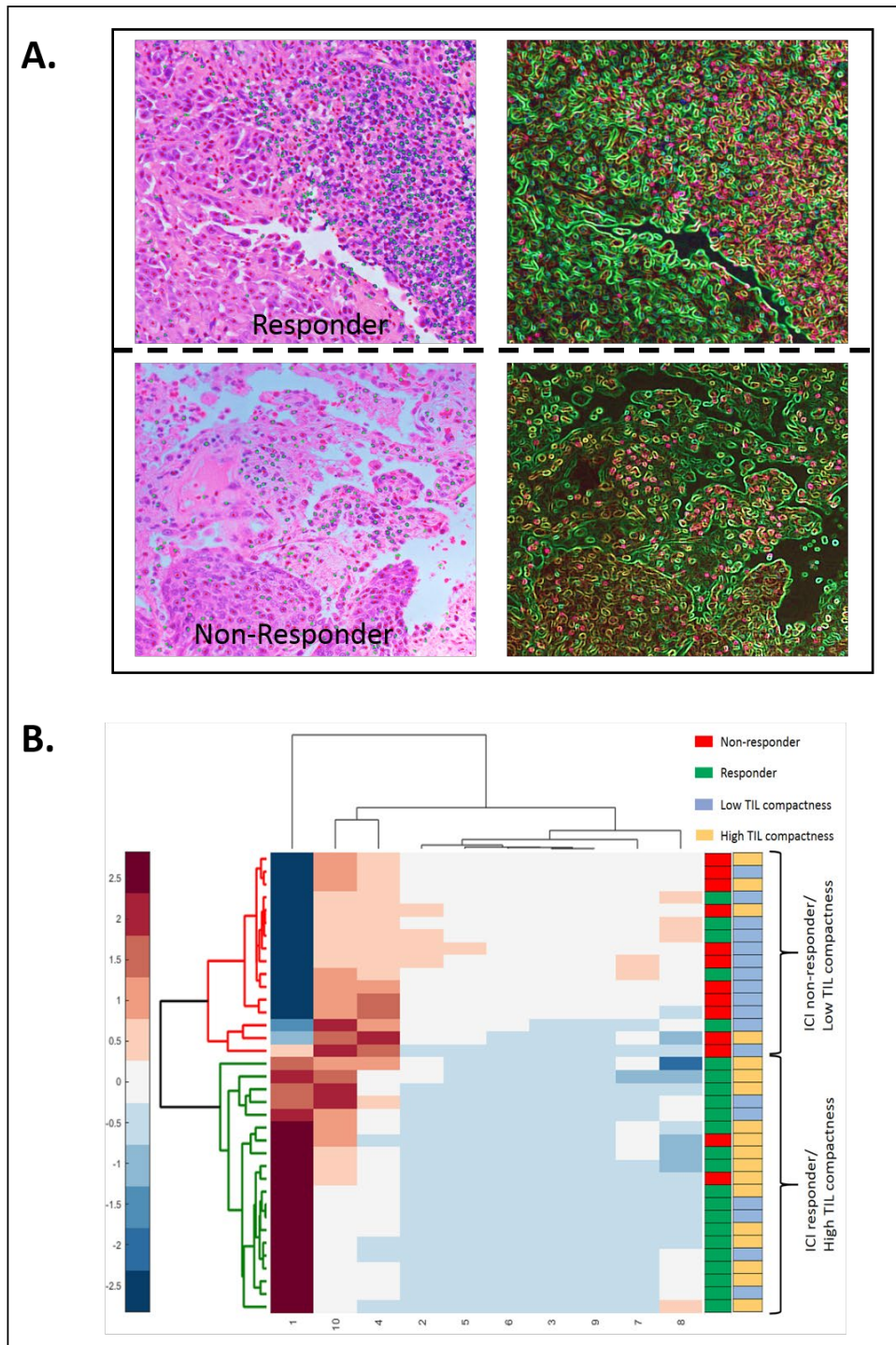


# PD-L1 expression to predict overall survival



**Figure S1.** Kaplan-Meier survival curves on a subset of 25 studies with three different cut-offs for PD-L1 scores: (A) 1%, (B) 10%, and (C) 50%. (D) shows the KM curve using PD-L1\_Rad score.

## TIL compactness variation across responders and non-responders



**Figure S2.** (A) shows biopsy samples obtained from the nodules before immunotherapy. Pink regions on right show the tumor infiltrating lymphocytes (TILs). Green regions are the non-TIL structures. As may be observed, the TIL density is higher in the responder as compared to the non-responder. (B) Unsupervised clustering using top 10 radiomic features. The TIL compactness and the response status are shown on the right.