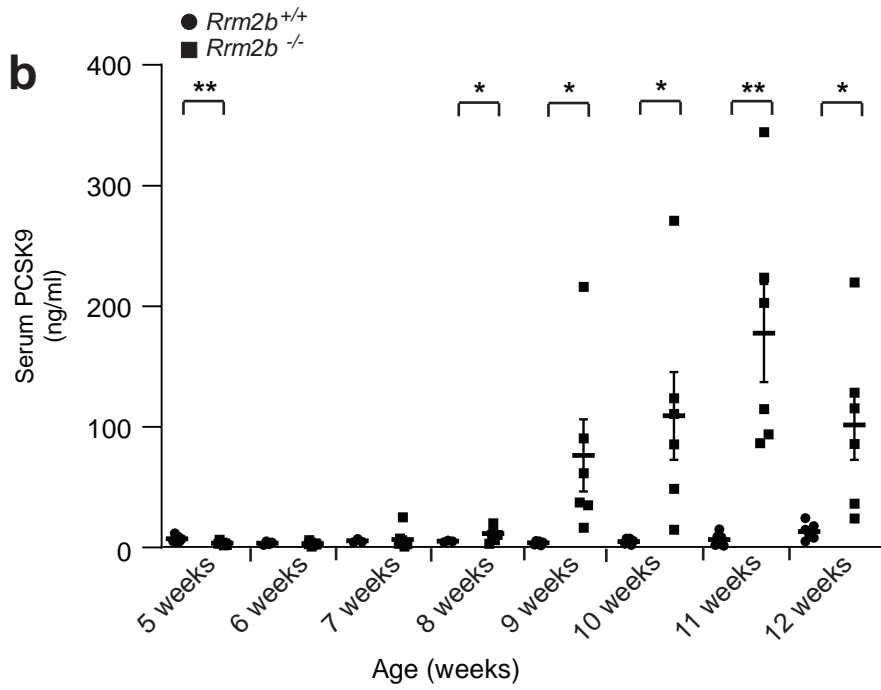
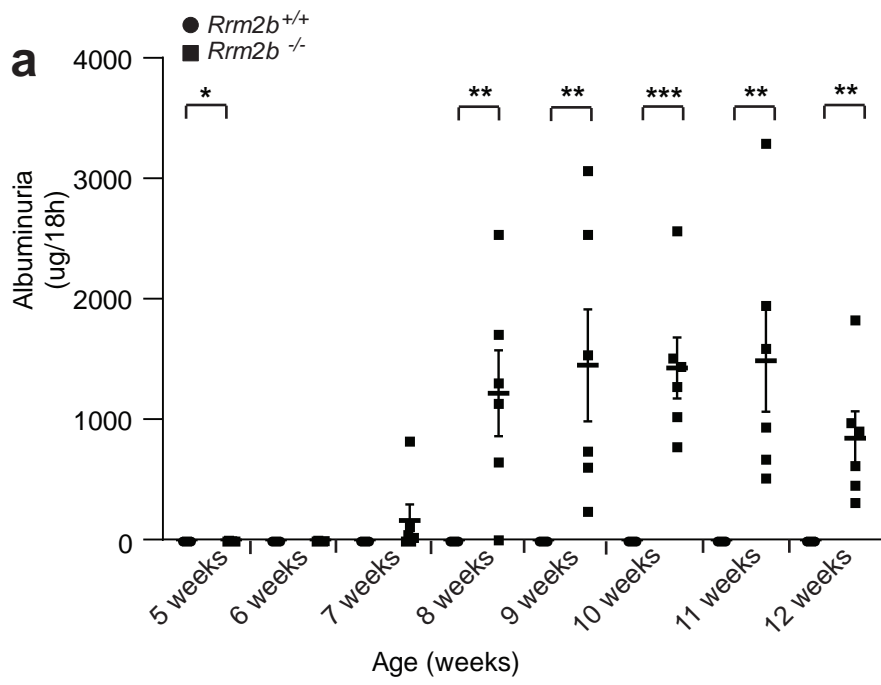


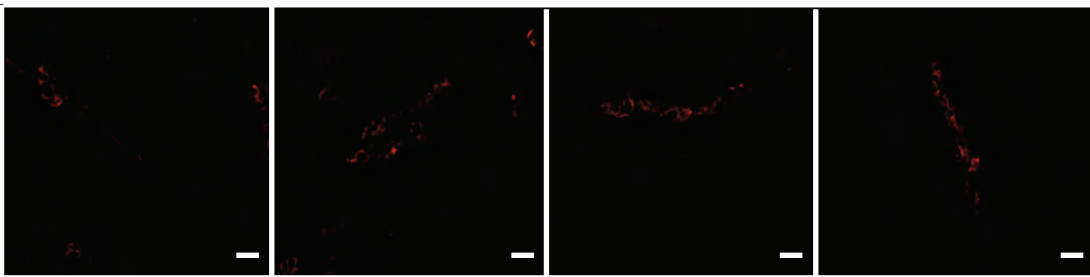
Number	Sex	Age	Diagnosis	Proteinuria
E-181-14	M	22	Control - Pre-transplant biopsy	-
E-116-14	M	23	Control - Pre-transplant biopsy	-
E-11-14	F	45	Control - Pre-transplant biopsy	-
E-21-16	M	32	FSGS - Perihilar and undertermined with hyalinosis	2.5 g/day
E-11-16	M	18	FSGS - Undertermined	7.0 g/day
E-17-19	F	45	FSGS - Perihilar and peripheral	unavailable
E-276-12	F	28	FSGS - NOS (tip and perihilar)	2.5 g/day
E-13-14	F	43	FSGS - Tip sclerosing	12 g/day

Supplementary Figure 1

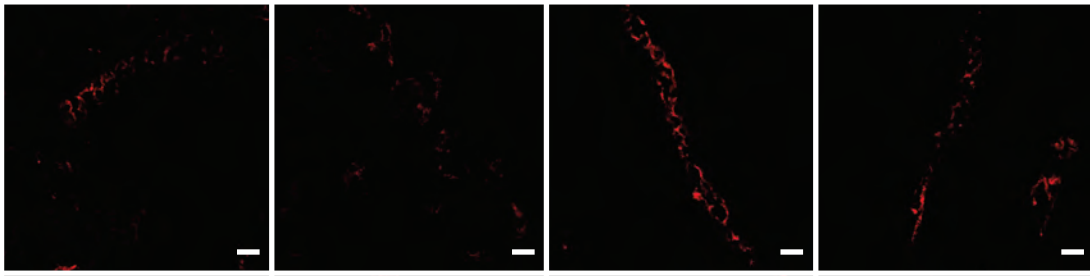


Supplementary Figure 2

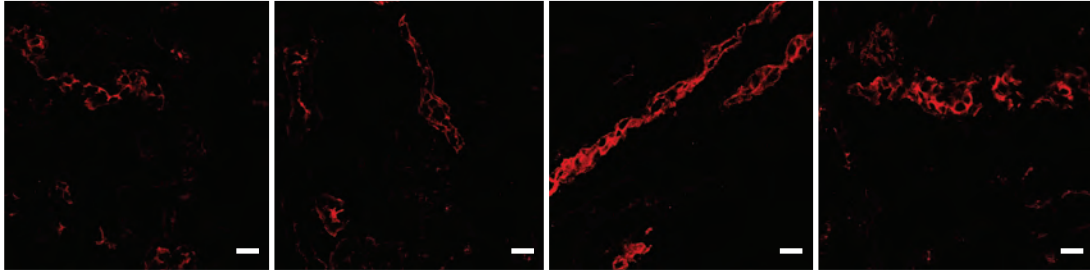
5 weeks



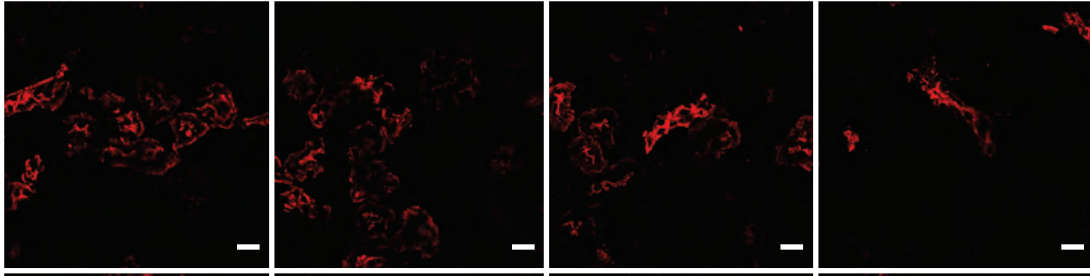
6 weeks



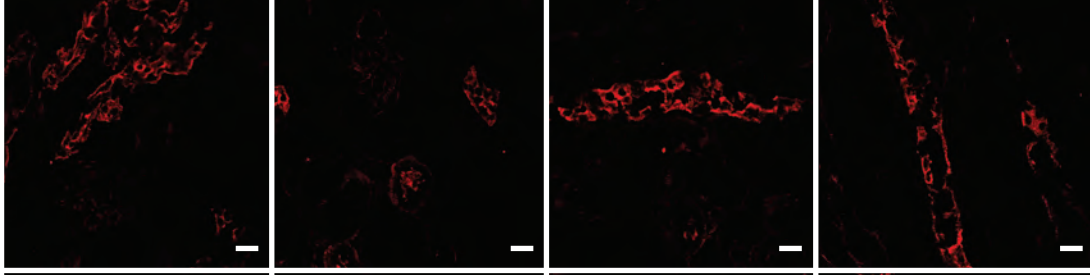
7 weeks



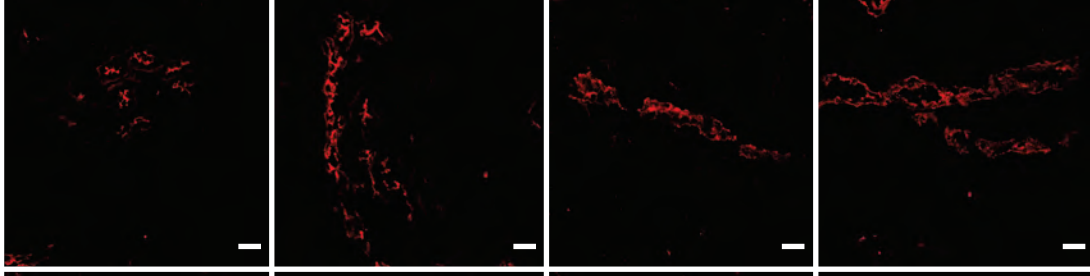
8 weeks



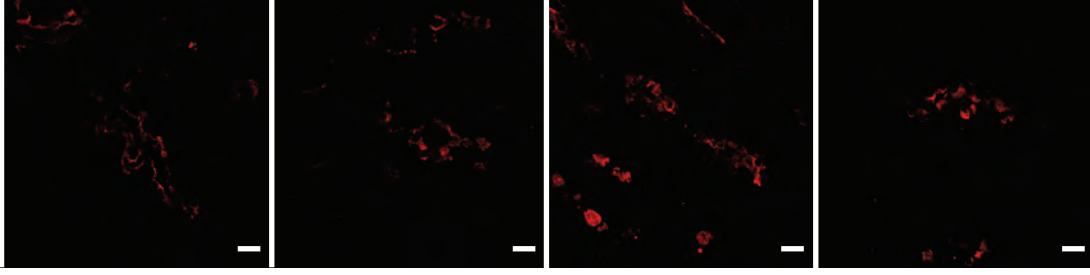
9 weeks



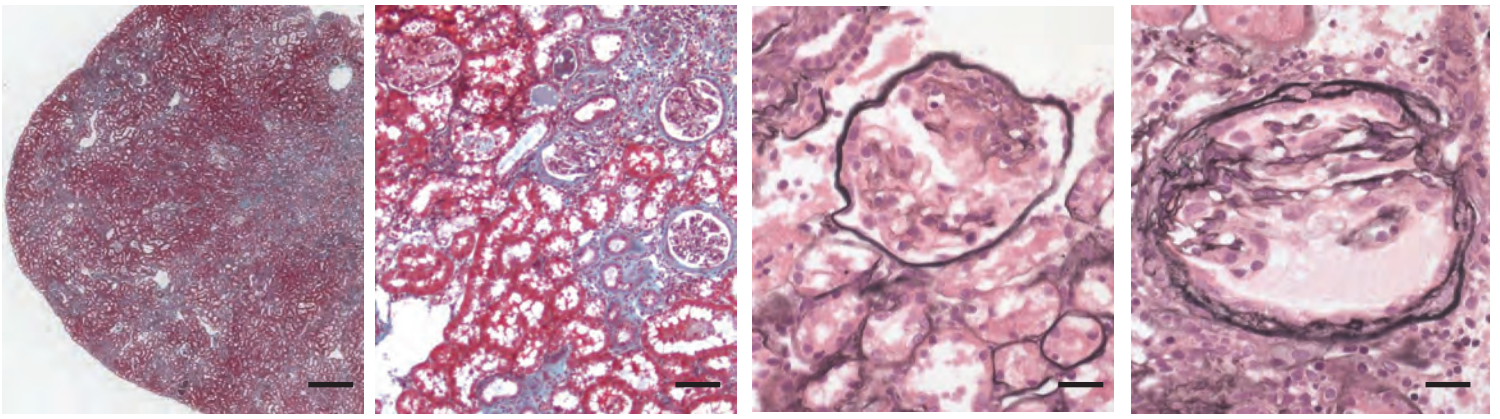
10 weeks



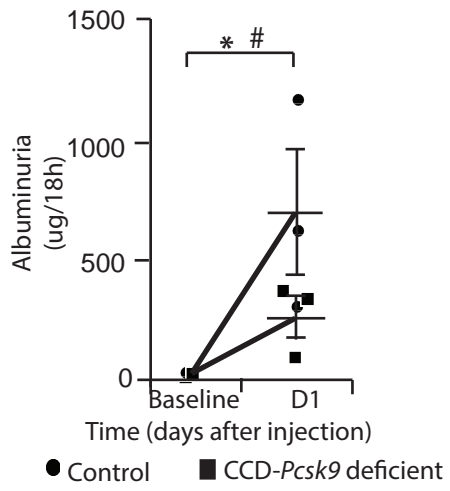
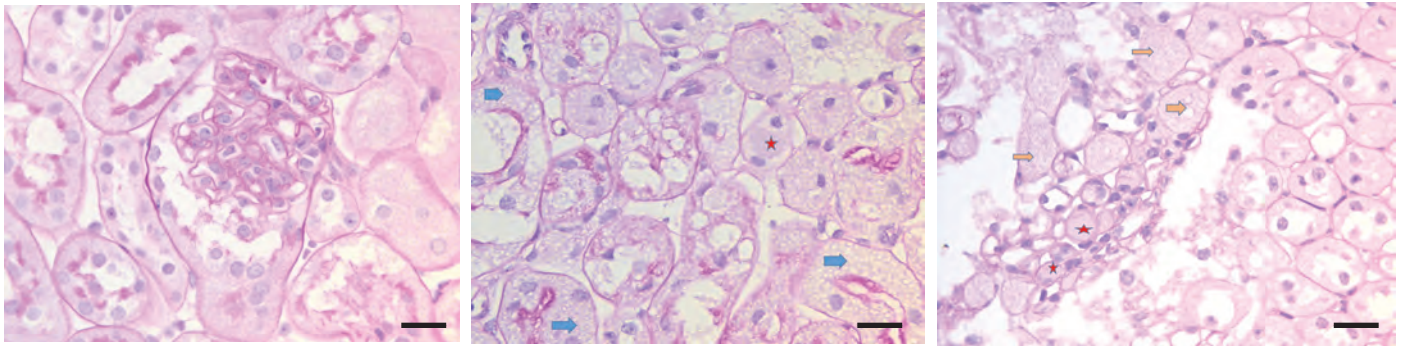
11 weeks



Supplementary Figure 3

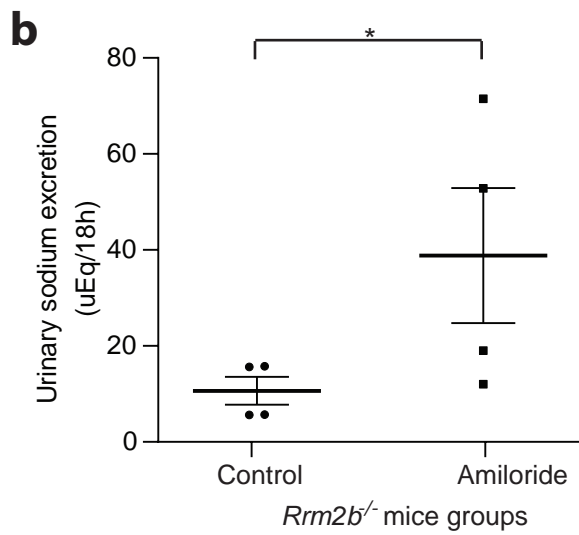
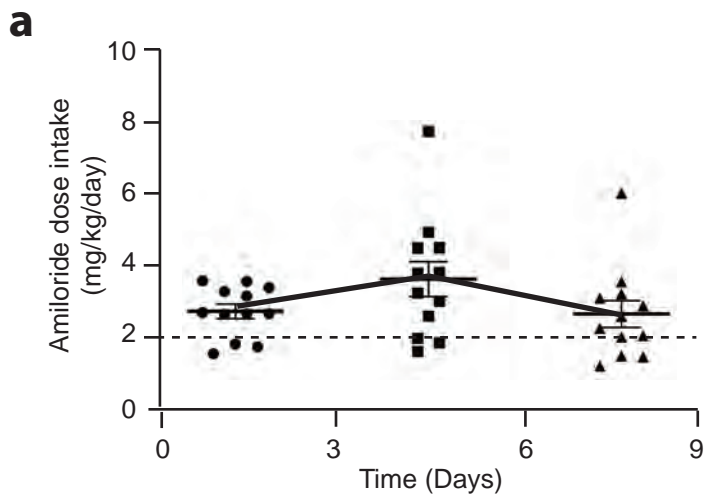


Supplementary Figure 4

a**b**

Control mouse

CCD-*Pcsk9* deficient mice**Supplementary Figure 5**



Supplementary Figure 6