

Supplementary Figure 1 for the paper entitled

**Genes, pathways and networks responding to drought stress in oil palm roots**

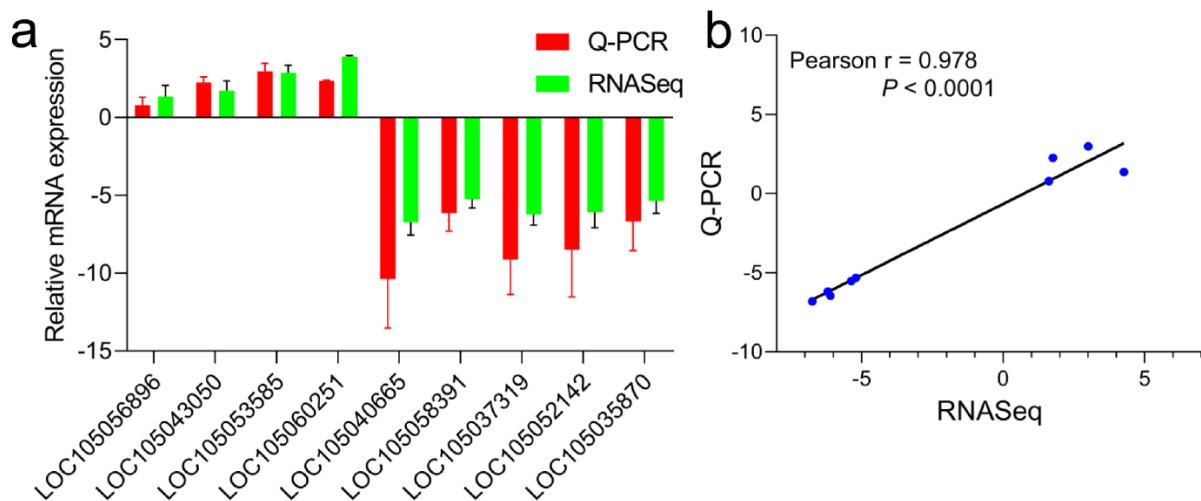
Le Wang<sup>1</sup>, May Lee<sup>1</sup>, Baoqing Ye<sup>1</sup> and Gen Hua Yue<sup>1, 2#</sup>

<sup>1</sup> Molecular Population Genetics and Breeding Group, Temasek Life Sciences Laboratory, 1 Research Link, National University of Singapore, Singapore 117604

<sup>2</sup> Department of Biological Sciences, National University of Singapore, 14 Science Drive 4, Singapore 117543

# Correspondence: Dr. G.H. Yue

Temasek Life Sciences Laboratory, 1 Research Link, National University of Singapore, 117604 Singapore; Tel: +65-68727405; Fax: +65-68727007; Email: genhua@tll.org.sg



**Figure S1** The relative expression of selected DEGs between real-time Q-PCR and RNA-Seq (a) and the Pearson's correlation between the two data sets (b), in the roots of oil palm seedlings.