

HALO image analysis software with the CytoNuclear IHC v1.6 algorithm module

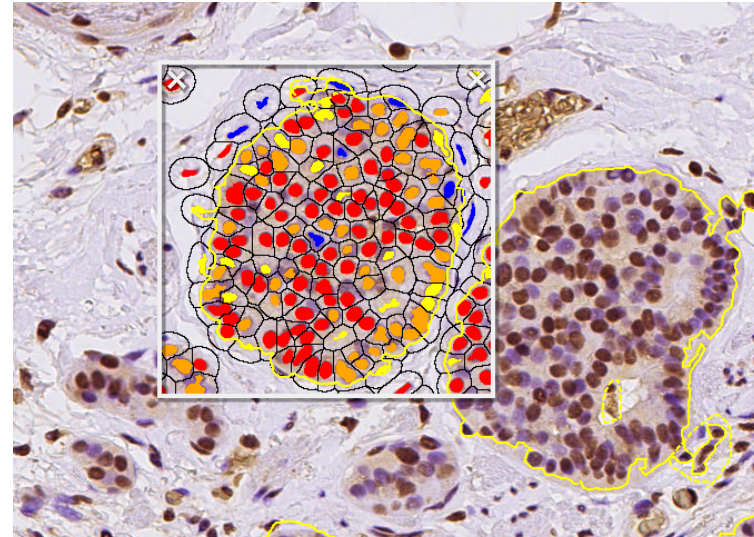
Step 3 Setting parameter of “Cell Detection”

Cell Detection

- Nuclear Contrast Threshold
- Minimum Nuclear OD
- Nuclear size
- Minimum Nuclear Roundness
- Nuclear Segmentation Aggressiveness

Setting parameter of nuclear contrast, optical density, size, and shape by regulating above parameters

Step 4 Setting the thresholds of immunoreactivity



Blue: negative
Yellow: weak positive
Orange: moderate positive
Red: strong positive

Setting thresholds of negative, weak, moderate and strong positive