

HALO image analysis software with the CytoNuclear IHC v1.6 algorithm module

Step 5 Analyzing the all marked tumor area and confirming the Results

Results

% Stain 1 Positive Cells

% Stain 1 0+ Cells

% Stain 1 1+ Cells

% Stain 1 2+ Cells

% Stain 1 3+ Cells

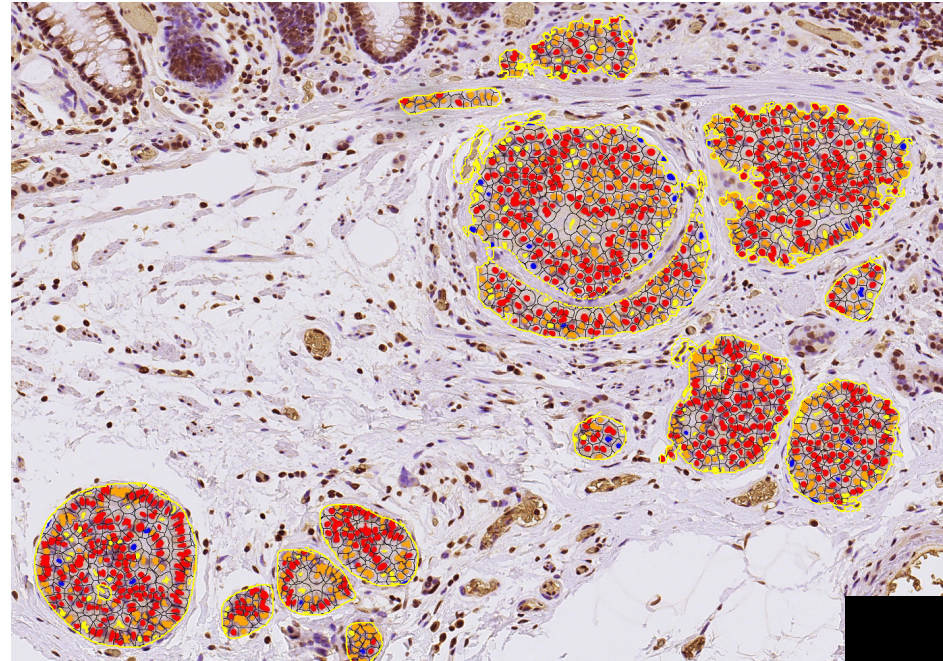
Stain 1 H-score

% Stain 0+: negative

% Stain 1+: weak positive

% Stain 2+: moderate positive

% Stain 3+: strong positive



Blue: negative

Yellow: weak positive

Orange: moderate positive

Red: strong positive