

Mesalazine granule formulation improves clinical data in Crohn's disease compared with tablet formulation

Satoshi Tamura¹, Natsuki Ishida¹, Takahiro Miyazu¹, Shunya Onoue¹, Shinya Tani¹, Mihoko Yamade¹, Yasushi Hamaya¹, Moriya Iwaizumi³, Satoshi Osawa², Takahisa Furuta⁴, and Ken Sugimoto^{1*}

¹First Department of Medicine, Hamamatsu University School of Medicine, 1-20-1 Handayama, Higashi-ku, Hamamatsu 431-3192, Japan

²Department of Endoscopic and Photodynamic Medicine, Hamamatsu University School of Medicine, 1-20-1 Handayama, Higashi-ku, Hamamatsu 431-3192, Japan

³Department of Laboratory Medicine, Hamamatsu University School of Medicine, 1-20-1 Handayama, Higashi-ku, Hamamatsu 431-3192, Japan

⁴Center for Clinical Research, Hamamatsu University School of Medicine, 1-20-1 Handayama, Higashi-ku, Hamamatsu 431-3192, Japan

***Corresponding author:**

Ken Sugimoto, MD, PhD

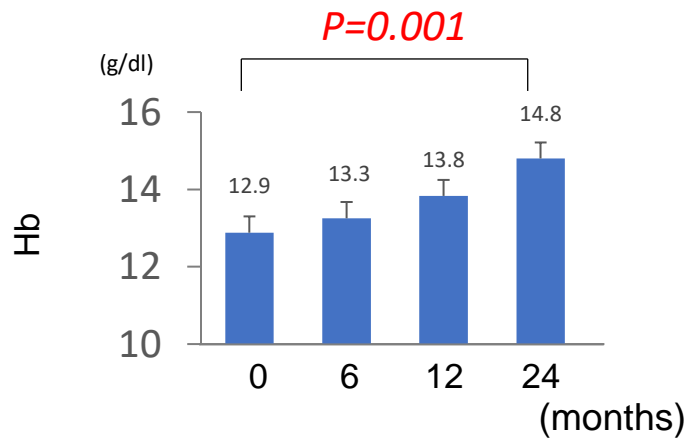
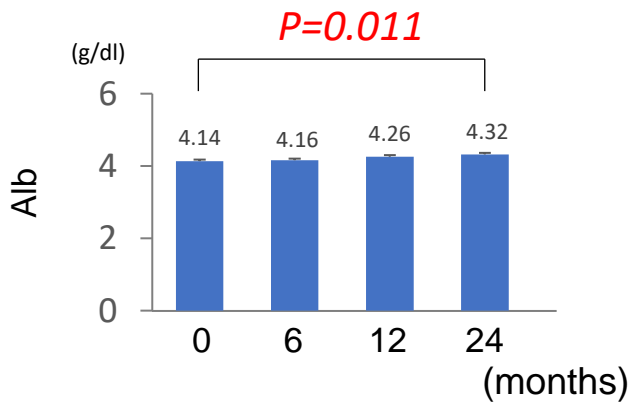
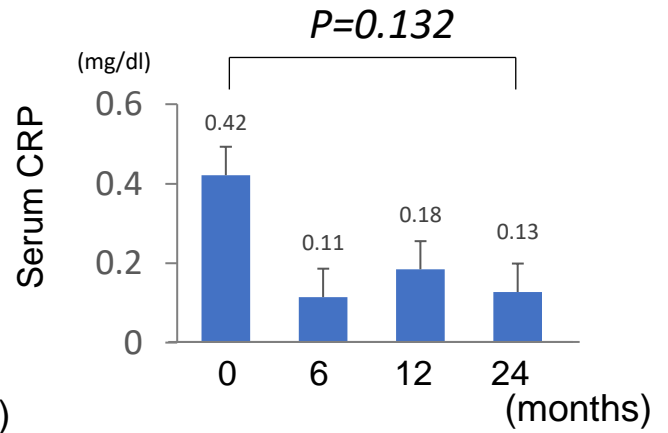
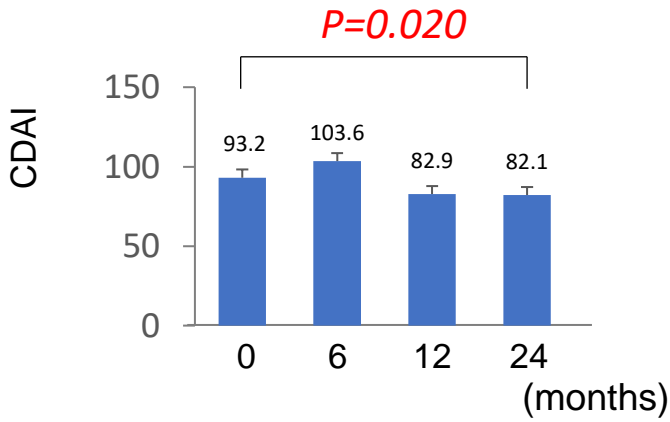
First Department of Medicine, Hamamatsu University School of Medicine, 1-20-1 Handayama, Higashi-ku, Hamamatsu 431-3192, Japan

Tel: 81 53 435 2261

Fax: 81 53 434 9447

Email: sugimken@hama-med.ac.jp

Supplemental Figure S1



Supplemental Figure S2

