

Supplementary materials for:

Parasympathetic and sympathetic nervous systems interactively predict change in
cognitive functioning in midlife adults

Erik L. Knight^{*1,2}, Ryan J. Giuliano³, Sean W. Shank⁴, Megan M. Clarke⁴, and David M.
Almeida^{1,5}

1. Center for Healthy Aging, Pennsylvania State University
2. Department of Biobehavioral Health, Pennsylvania State University
3. Department of Psychology, University of Manitoba
4. Department of Kinesiology, Pennsylvania State University
5. Department of Human Development and Family Studies, Pennsylvania State University

*Correspondence:
423 Biobehavioral Health
Pennsylvania State University
University Park, PA 16802
elk24@psu.edu

Table S1: Association of resting baseline PNS activity with change in cognitive functioning

	BTACT			Episodic Memory			Executive Functioning		
	<i>Estimates</i>	<i>CI</i>	<i>p</i>	<i>Estimates</i>	<i>CI</i>	<i>p</i>	<i>Estimates</i>	<i>CI</i>	<i>p</i>
Intercept (M2)	1.959	1.420 – 2.498	<0.001	0.827	0.251 – 1.403	0.005	2.159	1.631 – 2.687	<0.001
MIDUS Wave	-0.185	-0.224 – -0.146	<0.001	-0.117	-0.179 – -0.056	<0.001	-0.326	-0.363 – -0.289	<0.001
HF HRV (baseline)	-0.053	-0.094 – -0.012	0.012	-0.032	-0.080 – 0.016	0.189	-0.055	-0.095 – -0.014	0.008
MIDUS Wave x HF HRV	0.030	-0.001 – 0.061	0.057	0.027	-0.021 – 0.076	0.273	0.035	0.005 – 0.064	0.020
<i>Covariates</i>									
EPI	-0.014	-0.097 – 0.070	0.747	0.004	-0.085 – 0.093	0.938	-0.010	-0.092 – 0.072	0.808
Gender	0.039	-0.056 – 0.133	0.423	0.571	0.470 – 0.673	<0.001	-0.147	-0.240 – -0.054	0.002
Age	-0.026	-0.031 – -0.021	<0.001	-0.021	-0.026 – -0.016	<0.001	-0.025	-0.030 – -0.021	<0.001
Years between Waves	-0.170	-0.227 – -0.112	<0.001	-0.092	-0.154 – -0.031	0.003	-0.177	-0.233 – -0.121	<0.001
Circulatory	-0.184	-0.350 – -0.017	0.031	-0.200	-0.378 – -0.023	0.027	-0.178	-0.341 – -0.015	0.033
Heart Disease	-0.082	-0.260 – 0.097	0.369	-0.040	-0.230 – 0.150	0.682	-0.070	-0.244 – 0.104	0.431
High BP	-0.123	-0.238 – -0.007	0.037	0.008	-0.116 – 0.131	0.904	-0.115	-0.229 – -0.002	0.045
Heart Murmur	0.071	-0.069 – 0.210	0.320	-0.010	-0.160 – 0.139	0.891	0.084	-0.053 – 0.221	0.229
TIA/Stroke	-0.095	-0.372 – 0.182	0.503	-0.243	-0.533 – 0.048	0.102	-0.124	-0.391 – 0.143	0.363
Emphysema/COPD	-0.078	-0.379 – 0.222	0.609	0.243	-0.075 – 0.562	0.135	-0.207	-0.500 – 0.086	0.166
Major Depressive Disorder	-0.028	-0.145 – 0.089	0.641	-0.091	-0.216 – 0.034	0.155	-0.049	-0.164 – 0.066	0.404
Medication	-0.060	-0.122 – 0.002	0.056	-0.065	-0.131 – 0.002	0.056	-0.048	-0.109 – 0.012	0.117
Random Effects									
σ^2		0.16			0.43			0.16	
T_{00}		0.39			0.33			0.38	

	BTACT	Episodic Memory	Executive Functioning
ICC	0.71	0.43	0.71
N	867	869	869
Observations	1666	1733	1738
Marginal R ² / Conditional R ²	0.187 / 0.764	0.166 / 0.527	0.222 / 0.773

Table S2: Association of EPI concentration with change in cognitive functioning

	BTACT			Episodic Memory			Executive Functioning		
	<i>Estimates</i>	<i>CI</i>	<i>p</i>	<i>Estimates</i>	<i>CI</i>	<i>p</i>	<i>Estimates</i>	<i>CI</i>	<i>p</i>
Intercept (M2)	1.955	1.416 – 2.493	<0.001	0.827	0.251 – 1.402	0.005	2.159	1.631 – 2.687	<0.001
Midus Wave	-0.184	-0.223 – -0.145	<0.001	-0.117	-0.179 – -0.056	<0.001	-0.326	-0.363 – -0.289	<0.001
EPI	-0.043	-0.133 – 0.048	0.354	0.003	-0.101 – 0.108	0.950	-0.019	-0.107 – 0.069	0.677
MIDUS Wave x EPI	0.059	-0.011 – 0.129	0.097	0.000	-0.109 – 0.110	0.994	0.017	-0.049 – 0.083	0.611
<i>Covariates</i>									
HF HRV (baseline)	-0.039	-0.077 – -0.000	0.049	-0.018	-0.059 – 0.023	0.380	-0.037	-0.075 – 0.000	0.053
Age	-0.026	-0.031 – -0.021	<0.001	-0.021	-0.026 – -0.016	<0.001	-0.025	-0.030 – -0.021	<0.001
Gender	0.039	-0.056 – 0.134	0.421	0.571	0.470 – 0.672	<0.001	-0.147	-0.240 – -0.054	0.002
Years between Waves	-0.169	-0.227 – -0.112	<0.001	-0.092	-0.154 – -0.031	0.003	-0.177	-0.233 – -0.121	<0.001
Circulatory	-0.186	-0.353 – -0.020	0.028	-0.200	-0.378 – -0.023	0.027	-0.178	-0.341 – -0.015	0.033
Heart Disease	-0.082	-0.260 – 0.096	0.368	-0.040	-0.230 – 0.150	0.680	-0.070	-0.244 – 0.104	0.431
High BP	-0.122	-0.237 – -0.006	0.039	0.008	-0.116 – 0.131	0.904	-0.115	-0.229 – -0.002	0.045
Heart Murmur	0.072	-0.068 – 0.211	0.313	-0.010	-0.159 – 0.139	0.891	0.084	-0.053 – 0.221	0.229
TIA/Stroke	-0.095	-0.372 – 0.182	0.501	-0.243	-0.533 – 0.048	0.102	-0.124	-0.391 – 0.143	0.363
Emphysema/COPD	-0.077	-0.377 – 0.223	0.615	0.243	-0.075 – 0.562	0.134	-0.207	-0.500 – 0.086	0.166
Major Depressive Disorder	-0.027	-0.144 – 0.090	0.648	-0.091	-0.216 – 0.034	0.155	-0.049	-0.164 – 0.066	0.404
Medication	-0.061	-0.122 – 0.001	0.055	-0.065	-0.131 – 0.002	0.056	-0.048	-0.109 – 0.012	0.117
Random Effects									
σ^2		0.16			0.43			0.16	
T_{00}		0.39			0.33			0.38	

	BTACT	Episodic Memory	Executive Functioning
ICC	0.71	0.43	0.71
N	867	869	869
Observations	1666	1733	1738
Marginal R ² / Conditional R ²	0.187 / 0.763	0.165 / 0.527	0.221 / 0.772

Table S3: Association of HF HRV recovery with change in cognitive functioning

	BTACT			Episodic Memory			Executive Functioning		
	<i>Estimates</i>	<i>CI</i>	<i>p</i>	<i>Estimates</i>	<i>CI</i>	<i>p</i>	<i>Estimates</i>	<i>CI</i>	<i>p</i>
Intercept (M2)	1.960	1.416 – 2.503	<0.001	0.793	0.216 – 1.369	0.007	2.170	1.635 – 2.705	<0.001
MIDUS Wave	-0.184	-0.223 – -0.145	<0.001	-0.119	-0.182 – -0.057	<0.001	-0.326	-0.364 – -0.289	<0.001
HF HRV (recovery)	-0.073	-0.154 – 0.009	0.082	-0.072	-0.166 – 0.023	0.137	-0.030	-0.110 – 0.051	0.470
MIDUS Wave x HF HRV	0.071	0.007 – 0.135	0.030	0.013	-0.086 – 0.113	0.792	0.039	-0.021 – 0.099	0.204
<i>Covariates</i>									
EPI	-0.007	-0.091 – 0.078	0.878	0.017	-0.073 – 0.107	0.712	-0.010	-0.093 – 0.073	0.814
Age	-0.025	-0.029 – -0.020	<0.001	-0.020	-0.025 – -0.015	<0.001	-0.024	-0.028 – -0.019	<0.001
Gender	0.026	-0.070 – 0.122	0.590	0.564	0.463 – 0.666	<0.001	-0.158	-0.252 – -0.064	0.001
Years between Waves	-0.171	-0.228 – -0.113	<0.001	-0.090	-0.151 – -0.029	0.004	-0.179	-0.236 – -0.122	<0.001
Circulatory	-0.198	-0.365 – -0.032	0.020	-0.210	-0.386 – -0.033	0.020	-0.187	-0.351 – -0.024	0.025
Heart Disease	-0.101	-0.280 – 0.079	0.272	-0.051	-0.241 – 0.140	0.602	-0.094	-0.270 – 0.082	0.296
High BP	-0.130	-0.247 – -0.014	0.029	0.001	-0.123 – 0.124	0.992	-0.124	-0.238 – -0.009	0.035
Heart Murmur	0.081	-0.059 – 0.221	0.256	-0.007	-0.156 – 0.142	0.931	0.095	-0.043 – 0.233	0.177
TIA/Stroke	-0.095	-0.373 – 0.182	0.502	-0.204	-0.498 – 0.091	0.175	-0.132	-0.405 – 0.142	0.345
Emphysema/COPD	-0.079	-0.379 – 0.222	0.608	0.248	-0.069 – 0.564	0.126	-0.208	-0.502 – 0.086	0.166
Depression	-0.023	-0.141 – 0.095	0.698	-0.080	-0.205 – 0.045	0.210	-0.044	-0.160 – 0.072	0.456
Medication	-0.048	-0.110 – 0.014	0.130	-0.053	-0.119 – 0.013	0.119	-0.041	-0.103 – 0.020	0.185
Random Effects									
σ^2		0.16			0.42			0.15	
T ₀₀		0.39			0.32			0.38	

	BTACT	Episodic Memory	Executive Functioning
ICC	0.71	0.43	0.71
N	843	844	844
Observations	1622	1683	1688
Marginal R ² / Conditional R ²	0.181 / 0.764	0.162 / 0.523	0.215 / 0.774

Table S4: HF HRV recovery and EPI interactively predict change in cognitive functioning

	BTACT			Episodic Memory			Executive Functioning		
	<i>Estimates</i>	<i>CI</i>	<i>p</i>	<i>Estimates</i>	<i>CI</i>	<i>p</i>	<i>Estimates</i>	<i>CI</i>	<i>p</i>
Intercept (M2)	1.958	1.415 – 2.501	<0.001	0.793	0.215 – 1.370	0.007	2.169	1.634 – 2.704	<0.001
MIDUS Wave	-0.182	-0.221 – -0.143	<0.001	-0.118	-0.180 – -0.055	<0.001	-0.323	-0.360 – -0.286	<0.001
HF HRV (recovery)	-0.080	-0.162 – 0.002	0.056	-0.076	-0.171 – 0.019	0.115	-0.036	-0.117 – 0.044	0.378
EPI	-0.033	-0.125 – 0.058	0.475	0.021	-0.085 – 0.126	0.703	-0.018	-0.108 – 0.072	0.695
HF HRV x EPI	0.150	-0.011 – 0.311	0.067	0.088	-0.099 – 0.275	0.357	0.137	-0.021 – 0.296	0.090
Wave x EPI	0.053	-0.017 – 0.123	0.135	-0.007	-0.117 – 0.104	0.903	0.016	-0.050 – 0.082	0.633
Wave x HF HRV	0.075	0.011 – 0.139	0.021	0.021	-0.079 – 0.121	0.679	0.051	-0.009 – 0.111	0.095
Wave x HF HRV x EPI	-0.176	-0.305 – -0.048	0.007	-0.149	-0.347 – 0.049	0.141	-0.248	-0.367 – -0.130	<0.001
<i>Covariates</i>									
Age	-0.025	-0.029 – -0.020	<0.001	-0.020	-0.025 – -0.015	<0.001	-0.024	-0.028 – -0.019	<0.001
Gender	0.028	-0.068 – 0.124	0.564	0.565	0.463 – 0.666	<0.001	-0.158	-0.252 – -0.063	0.001
Years between Waves	-0.171	-0.228 – -0.113	<0.001	-0.090	-0.152 – -0.029	0.004	-0.179	-0.236 – -0.122	<0.001
Circulatory	-0.202	-0.368 – -0.035	0.018	-0.210	-0.387 – -0.034	0.020	-0.188	-0.352 – -0.024	0.025
Heart Disease	-0.099	-0.278 – 0.081	0.281	-0.051	-0.241 – 0.140	0.603	-0.094	-0.270 – 0.082	0.296
High BP	-0.129	-0.246 – -0.013	0.030	0.001	-0.123 – 0.124	0.991	-0.124	-0.238 – -0.009	0.035
Heart Murmur	0.083	-0.057 – 0.223	0.247	-0.007	-0.156 – 0.142	0.932	0.095	-0.043 – 0.233	0.177
TIA/Stroke	-0.106	-0.384 – 0.172	0.456	-0.206	-0.501 – 0.090	0.172	-0.134	-0.408 – 0.141	0.340
Emphysema/COPD	-0.080	-0.380 – 0.221	0.602	0.248	-0.069 – 0.565	0.125	-0.207	-0.502 – 0.087	0.168
Major Depressive Disorder	-0.021	-0.139 – 0.097	0.725	-0.080	-0.205 – 0.046	0.212	-0.044	-0.160 – 0.072	0.460

	BTACT			Episodic Memory			Executive Functioning		
	<i>Estimates</i>	<i>CI</i>	<i>p</i>	<i>Estimates</i>	<i>CI</i>	<i>p</i>	<i>Estimates</i>	<i>CI</i>	<i>p</i>
Medication	-0.051	-0.113 – 0.012	0.111	-0.053	-0.119 – 0.013	0.117	-0.042	-0.103 – 0.020	0.182
Random Effects									
σ^2		0.16			0.42			0.15	
T_{00}		0.39			0.32			0.38	
ICC		0.71			0.43			0.72	
N		843			844			844	
Observations		1622			1683			1688	
Marginal R ² / Conditional R ²		0.184 / 0.766			0.163 / 0.523			0.217 / 0.778	

Table S5: HF HRV reactivity and EPI interactively predict change in cognitive functioning

	BTACT			Episodic Memory			Executive Functioning		
	<i>Estimates</i>	<i>CI</i>	<i>p</i>	<i>Estimates</i>	<i>CI</i>	<i>p</i>	<i>Estimates</i>	<i>CI</i>	<i>p</i>
Intercept (M2)	1.948	1.405 – 2.491	<0.001	0.797	0.220 – 1.375	0.007	2.160	1.626 – 2.695	<0.001
MIDUS Wave	-0.185	-0.223 – -0.146	<0.001	-0.114	-0.176 – -0.053	<0.001	-0.327	-0.364 – -0.290	<0.001
HF HRV (reactivity)	0.065	-0.022 – 0.153	0.143	0.044	-0.058 – 0.145	0.399	0.034	-0.053 – 0.120	0.445
EPI	-0.028	-0.119 – 0.063	0.549	0.019	-0.087 – 0.124	0.728	-0.009	-0.099 – 0.080	0.837
HF HRV x EPI	-0.202	-0.370 – -0.034	0.018	-0.131	-0.326 – 0.064	0.187	-0.200	-0.365 – -0.035	0.018
Wave x EPI	0.050	-0.019 – 0.120	0.152	-0.008	-0.118 – 0.102	0.883	0.012	-0.053 – 0.078	0.714
Wave x HF HRV	-0.051	-0.119 – 0.017	0.142	0.027	-0.079 – 0.134	0.615	-0.038	-0.102 – 0.026	0.241
Wave x HF HRV x EPI	0.192	0.054 – 0.330	0.006	0.234	0.029 – 0.439	0.025	0.263	0.140 – 0.385	<0.001
<i>Covariates</i>									
Age	-0.025	-0.030 – -0.020	<0.001	-0.021	-0.026 – -0.016	<0.001	-0.024	-0.029 – -0.020	<0.001
Gender	0.035	-0.061 – 0.130	0.480	0.570	0.469 – 0.672	<0.001	-0.153	-0.247 – -0.058	0.002
Years between Waves	-0.169	-0.227 – -0.111	<0.001	-0.091	-0.152 – -0.029	0.004	-0.177	-0.234 – -0.121	<0.001
Circulatory	-0.200	-0.367 – -0.033	0.019	-0.212	-0.389 – -0.035	0.019	-0.189	-0.353 – -0.024	0.024
Heart Disease	-0.101	-0.280 – 0.078	0.267	-0.057	-0.247 – 0.133	0.554	-0.088	-0.263 – 0.088	0.329
High BP	-0.124	-0.240 – -0.007	0.038	0.007	-0.117 – 0.131	0.913	-0.119	-0.234 – -0.004	0.042
Heart Murmur	0.074	-0.066 – 0.214	0.299	-0.009	-0.158 – 0.140	0.909	0.085	-0.053 – 0.222	0.229
TIA/Stroke	-0.093	-0.376 – 0.191	0.522	-0.180	-0.481 – 0.122	0.242	-0.125	-0.404 – 0.155	0.382
Emphysema/COPD	-0.088	-0.389 – 0.214	0.569	0.242	-0.076 – 0.561	0.136	-0.211	-0.507 – 0.085	0.162
Major Depressive Disorder	-0.025	-0.143 – 0.094	0.685	-0.082	-0.208 – 0.044	0.202	-0.046	-0.163 – 0.070	0.436

	BTACT			Episodic Memory			Executive Functioning		
	<i>Estimates</i>	<i>CI</i>	<i>p</i>	<i>Estimates</i>	<i>CI</i>	<i>p</i>	<i>Estimates</i>	<i>CI</i>	<i>p</i>
Medication	-0.053	-0.116 – 0.009	0.094	-0.055	-0.122 – 0.011	0.104	-0.042	-0.104 – 0.019	0.176
Random Effects									
σ^2		0.16			0.42			0.15	
T_{00}		0.39			0.33			0.39	
ICC		0.72			0.44			0.72	
N		854			855			855	
Observations		1642			1705			1710	
Marginal R ² / Conditional R ²		0.186 / 0.770			0.164 / 0.528			0.219 / 0.781	

Table S6. Follow-up analyses of PNS x SNS on change in BTACT scores using quadratic index of PNS responsiveness

	BTACT		
	<i>Estimates</i>	<i>CI</i>	<i>p</i>
Intercept (M2)	1.990	1.451 – 2.529	<0.001
MIDUS Wave	-0.183	-0.222 – -0.144	<0.001
HF HRV (quadratic index)	-0.052	-0.109 – 0.005	0.072
EPI	-0.037	-0.127 – 0.054	0.427
HF HRV x EPI*	0.119	0.005 – 0.233	0.041
Wave x HF HRV	0.044	0.000 – 0.089	0.049
Wave x EPI	0.054	-0.016 – 0.123	0.129
Wave x HF HRV x EPI	-0.128	-0.218 – -0.037	0.006
<i>Covariates</i>			
Age	-0.025	-0.030 – -0.021	<0.001
Gender	0.036	-0.059 – 0.131	0.456
Years between Waves	-0.174	-0.231 – -0.116	<0.001
Circulatory	-0.200	-0.367 – -0.034	0.019
Heart Disease	-0.095	-0.274 – 0.083	0.296
High BP	-0.125	-0.241 – -0.009	0.034
Heart Murmur	0.074	-0.066 – 0.214	0.298
TIA/Stroke	-0.093	-0.371 – 0.185	0.510
Emphysema/COPD	-0.070	-0.372 – 0.231	0.647
Major Depressive Disorder	-0.023	-0.141 – 0.095	0.699
Medication	-0.057	-0.119 – 0.005	0.073
Random Effects			
σ^2		0.16	
T_{00}		0.39	
ICC		0.71	
N		865	
Observations		1662	
Marginal R ² / Conditional R ²		0.188 / 0.766	

*Although significant in the MLM, these effects are not evident in cross-sectional models focused on MIDUS 2.

Table S7: Age weakly and inconsistently moderates the interaction between HRV and EPI on changes in cognitive functioning (BTACT scores)

	Baseline HRV			HRV Reactivity			HRV Recovery		
	<i>Estimates</i>	<i>CI</i>	<i>p</i>	<i>Estimates</i>	<i>CI</i>	<i>p</i>	<i>Estimates</i>	<i>CI</i>	<i>p</i>
Intercept	1.875	1.336 – 2.414	<0.001	1.911	1.367 – 2.455	<0.001	1.941	1.397 – 2.484	<0.001
MIDUS Wave	-0.207	-0.250 – -0.164	<0.001	-0.197	-0.238 – -0.156	<0.001	-0.194	-0.236 – -0.153	<0.001
HF HRV	-0.066	-0.110 – -0.021	0.004	0.088	-0.007 – 0.183	0.069	-0.105	-0.196 – -0.015	0.023
EPI	-0.032	-0.132 – 0.069	0.537	0.010	-0.090 – 0.109	0.848	0.002	-0.098 – 0.102	0.969
Age	-0.027	-0.032 – -0.022	<0.001	-0.025	-0.030 – -0.020	<0.001	-0.025	-0.030 – -0.020	<0.001
Wave x HF HRV	0.041	0.007 – 0.075	0.019	-0.048	-0.121 – 0.024	0.193	0.070	0.000 – 0.140	0.049
Wave x EPI	0.042	-0.036 – 0.120	0.292	0.019	-0.056 – 0.095	0.616	0.026	-0.050 – 0.102	0.508
Wave x Age	0.002	-0.002 – 0.006	0.244	0.001	-0.002 – 0.005	0.441	0.001	-0.002 – 0.005	0.470
HF HRV x EPI	0.085	-0.000 – 0.169	0.051	-0.226	-0.429 – -0.023	0.029	0.144	-0.046 – 0.334	0.138
HF HRV x Age	0.005	0.001 – 0.009	0.010	-0.008	-0.016 – -0.000	0.045	0.007	-0.001 – 0.015	0.071
EPI x Age	-0.007	-0.015 – 0.002	0.109	-0.009	-0.018 – -0.000	0.048	-0.008	-0.016 – 0.001	0.085
Wave x HF HRV x EPI	-0.047	-0.114 – 0.020	0.165	0.238	0.085 – 0.392	0.002	-0.225	-0.369 – -0.081	0.002
Wave x HF HRV x Age	-0.002	-0.005 – 0.001	0.225	0.001	-0.006 – 0.007	0.818	-0.001	-0.008 – 0.005	0.652
Wave x EPI x Age	0.006	-0.001 – 0.013	0.086	0.007	-0.000 – 0.013	0.056	0.006	-0.001 – 0.013	0.097
HF HRV x EPI x Age	-0.010	-0.016 – -0.003	0.002	0.009	-0.006 – 0.023	0.234	-0.006	-0.020 – 0.009	0.437
Wave x HF HRV x EPI x Age	0.004	-0.001 – 0.009	0.102	-0.011	-0.023 – 0.002	0.103	0.011	-0.001 – 0.023	0.062
<i>Covariates</i>									
Gender	0.042	-0.052 – 0.137	0.381	0.042	-0.053 – 0.138	0.385	0.037	-0.059 – 0.134	0.445

	Baseline HRV			HRV Reactivity			HRV Recovery		
	<i>Estimates</i>	<i>CI</i>	<i>p</i>	<i>Estimates</i>	<i>CI</i>	<i>p</i>	<i>Estimates</i>	<i>CI</i>	<i>p</i>
Years between Waves	-0.157	-0.215 – -0.100	<0.001	-0.164	-0.222 – -0.106	<0.001	-0.168	-0.226 – -0.110	<0.001
Circulatory	-0.181	-0.347 – -0.015	0.033	-0.194	-0.361 – -0.027	0.023	-0.196	-0.362 – -0.029	0.021
Heart Disease	-0.091	-0.268 – 0.087	0.317	-0.095	-0.274 – 0.084	0.300	-0.097	-0.276 – 0.082	0.289
High BP	-0.131	-0.246 – -0.016	0.026	-0.123	-0.239 – -0.006	0.039	-0.130	-0.246 – -0.013	0.030
Heart Murmur	0.080	-0.059 – 0.219	0.260	0.071	-0.070 – 0.211	0.324	0.085	-0.056 – 0.225	0.239
TIA/Stroke	-0.090	-0.367 – 0.186	0.522	-0.073	-0.357 – 0.212	0.616	-0.091	-0.371 – 0.188	0.521
Emphysema/COPD	-0.077	-0.377 – 0.222	0.614	-0.092	-0.394 – 0.210	0.549	-0.083	-0.385 – 0.219	0.589
Major Depressive Disorder	-0.038	-0.156 – 0.079	0.520	-0.031	-0.149 – 0.088	0.611	-0.029	-0.147 – 0.090	0.634
Medication	-0.059	-0.120 – 0.003	0.062	-0.049	-0.111 – 0.014	0.126	-0.047	-0.110 – 0.015	0.137
Random Effects									
σ^2		0.16			0.15			0.16	
T_{00}		0.38			0.39			0.39	
ICC		0.71			0.72			0.72	
N		867			854			843	
Observations		1666			1642			1622	
Marginal R ² / Conditional R ²		0.196 / 0.766			0.190 / 0.772			0.187 / 0.768	

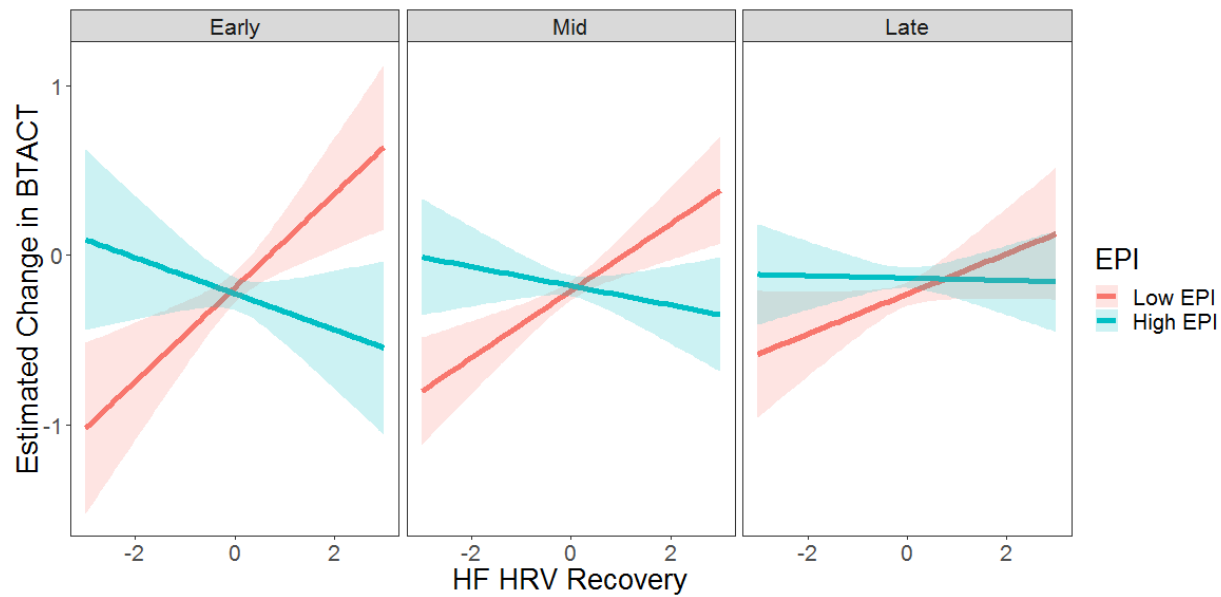


Figure S1. Estimated change in BTACT scores (MIDUS 3 – MIDUS 2) at ± 1 SD EPI concentration for a 40 (early), 50 (mid), and 60 (late) year old at MIDUS 2 (and thus, approximately 50, 60, and year old at MIDUS 3) across a range of HF HRV recovery values. Larger positive HF HRV recovery values indicate a stronger recovery following a cognitive challenge. Point estimates of change in BTACT represent the slope connecting MIDUS 3 and MIDUS 2 and were derived from the multilevel model.

Table S8: Norepinephrine moderates HRV association with change in cognitive functioning (BTACT scores)

	Baseline HRV			HRV Reactivity			HRV Recovery		
	<i>Estimates</i>	<i>CI</i>	<i>p</i>	<i>Estimates</i>	<i>CI</i>	<i>p</i>	<i>Estimates</i>	<i>CI</i>	<i>p</i>
Intercept	1.956	1.418 – 2.494	<0.001	1.943	1.401 – 2.484	<0.001	1.956	1.415 – 2.497	<0.001
MIDUS Wave	-0.185	-0.224 – -0.146	<0.001	-0.182	-0.221 – -0.143	<0.001	-0.180	-0.220 – -0.141	<0.001
HF HRV	-0.055	-0.096 – -0.014	0.009	0.073	-0.016 – 0.161	0.108	-0.083	-0.165 – -0.000	0.049
Norepinephrine (NE)	-0.075	-0.199 – 0.048	0.232	-0.052	-0.178 – 0.074	0.419	-0.048	-0.174 – 0.078	0.454
Wave x NE	0.048	-0.042 – 0.138	0.295	0.020	-0.069 – 0.110	0.660	0.017	-0.073 – 0.107	0.710
Wave x HF HRV	0.032	0.001 – 0.063	0.045	-0.058	-0.126 – 0.011	0.100	0.077	0.013 – 0.141	0.019
HF HRV x NE	0.029	-0.060 – 0.117	0.526	-0.254	-0.457 – -0.051	0.014	0.222	0.032 – 0.413	0.022
Wave x HF HRV x NE	-0.005	-0.074 – 0.063	0.877	0.161	0.001 – 0.321	0.048	-0.158	-0.308 – -0.008	0.039
<i>Covariates</i>									
Age	-0.026	-0.031 – -0.021	<0.001	-0.025	-0.030 – -0.020	<0.001	-0.024	-0.029 – -0.020	<0.001
Gender	0.049	-0.048 – 0.147	0.322	0.042	-0.057 – 0.141	0.405	0.037	-0.062 – 0.136	0.469
Years between Waves	-0.170	-0.228 – -0.113	<0.001	-0.170	-0.228 – -0.112	<0.001	-0.171	-0.229 – -0.113	<0.001
Circulatory	-0.183	-0.350 – -0.016	0.031	-0.204	-0.371 – -0.038	0.016	-0.208	-0.374 – -0.041	0.015
Heart Disease	-0.084	-0.262 – 0.095	0.358	-0.102	-0.281 – 0.076	0.262	-0.099	-0.279 – 0.080	0.277
High BP	-0.118	-0.234 – -0.002	0.046	-0.121	-0.238 – -0.004	0.043	-0.128	-0.245 – -0.011	0.032
Heart Murmur	0.069	-0.071 – 0.208	0.333	0.071	-0.069 – 0.211	0.320	0.078	-0.062 – 0.218	0.274
TIA/Stroke	-0.093	-0.369 – 0.183	0.509	-0.090	-0.373 – 0.192	0.531	-0.106	-0.382 – 0.171	0.454
Emphysema/COPD	-0.068	-0.369 – 0.234	0.660	-0.083	-0.385 – 0.219	0.591	-0.082	-0.383 – 0.218	0.591

	Baseline HRV			HRV Reactivity			HRV Recovery		
	<i>Estimates</i>	<i>CI</i>	<i>p</i>	<i>Estimates</i>	<i>CI</i>	<i>p</i>	<i>Estimates</i>	<i>CI</i>	<i>p</i>
Major Depressive Disorder	-0.026	-0.143 – 0.092	0.668	-0.022	-0.141 – 0.096	0.710	-0.019	-0.137 – 0.099	0.757
Medication	-0.058	-0.120 – 0.004	0.068	-0.052	-0.115 – 0.010	0.102	-0.051	-0.113 – 0.011	0.110
Random Effects									
σ^2		0.16			0.16			0.16	
T_{00}		0.39			0.39			0.39	
ICC		0.71			0.72			0.71	
N		867			854			843	
Observations		1666			1642			1622	
Marginal R^2 / Conditional R^2		0.188 / 0.764			0.186 / 0.768			0.184 / 0.765	

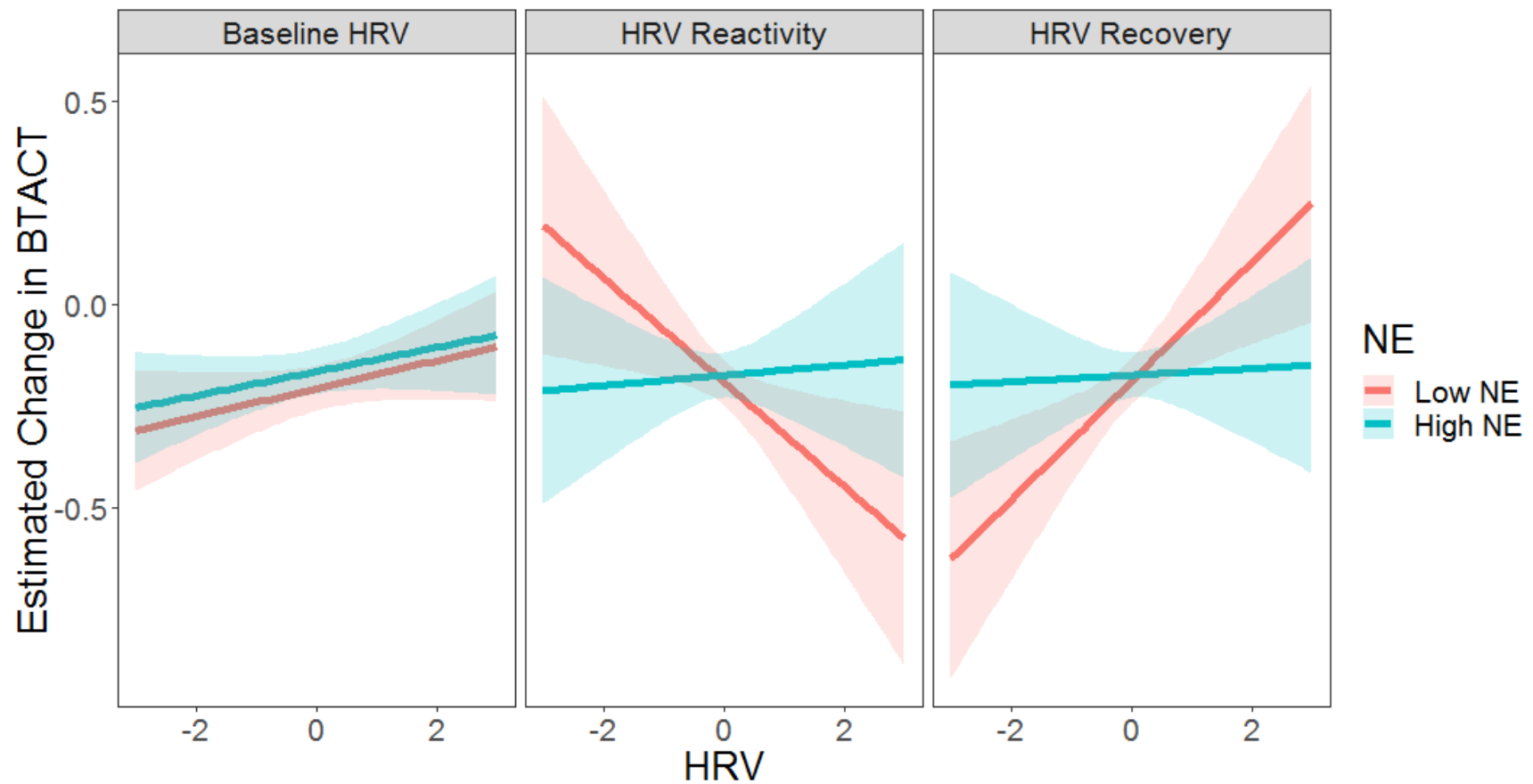


Figure S2: Estimated change in BTACT scores (MIDUS 3 – MIDUS 2) at ± 1 SD norepinephrine concentration across range of HF HRV values. Point estimates of change in BTACT represent the slope connecting MIDUS 2 to MIDUS 3 derived from the multilevel model. Larger HRV values for baseline and recovery represent stronger vagal tone; larger values for reactivity represent strong HRV withdrawal, indicative of weaker vagal tone.

Table S9: HF HRV reactivity to orthostatic challenge and EPI levels do not interactively predict change in cognitive functioning (BTACT scores)

	HF HRV Reactivity to Orthostatic Challenge		
	<i>Estimates</i>	<i>CI</i>	<i>p</i>
Intercept	2.048	1.501 – 2.595	<0.001
MIDUS Wave	-0.196	-0.251 – -0.141	<0.001
HF HRV (reactivity)	0.040	-0.019 – 0.099	0.182
EPI	-0.048	-0.174 – 0.078	0.456
Wave x EPI	0.077	-0.020 – 0.174	0.119
Wave x HF HRV	-0.022	-0.067 – 0.024	0.352
HF HRV x EPI	-0.012	-0.120 – 0.095	0.822
Wave x HF HRV x EPI	0.030	-0.053 – 0.113	0.483
<i>Covariates</i>			
Age	-0.024	-0.029 – -0.020	<0.001
Gender	0.028	-0.069 – 0.126	0.568
Years between Waves	-0.177	-0.235 – -0.119	<0.001
Circulatory	-0.224	-0.394 – -0.054	0.010
Heart Disease	-0.088	-0.271 – 0.096	0.349
High BP	-0.142	-0.260 – -0.023	0.019
Heart Murmur	0.095	-0.048 – 0.238	0.192
TIA/Stroke	-0.073	-0.358 – 0.212	0.614
Emphysema/COPD	-0.073	-0.376 – 0.230	0.638
Major Depressive Disorder	-0.012	-0.132 – 0.108	0.844
Medication	-0.049	-0.112 – 0.014	0.128
Random Effects			
σ^2		0.16	
T_{00}		0.39	
ICC		0.71	
N		827	
Observations		1590	
Marginal R ² / Conditional R ²		0.182 / 0.762	