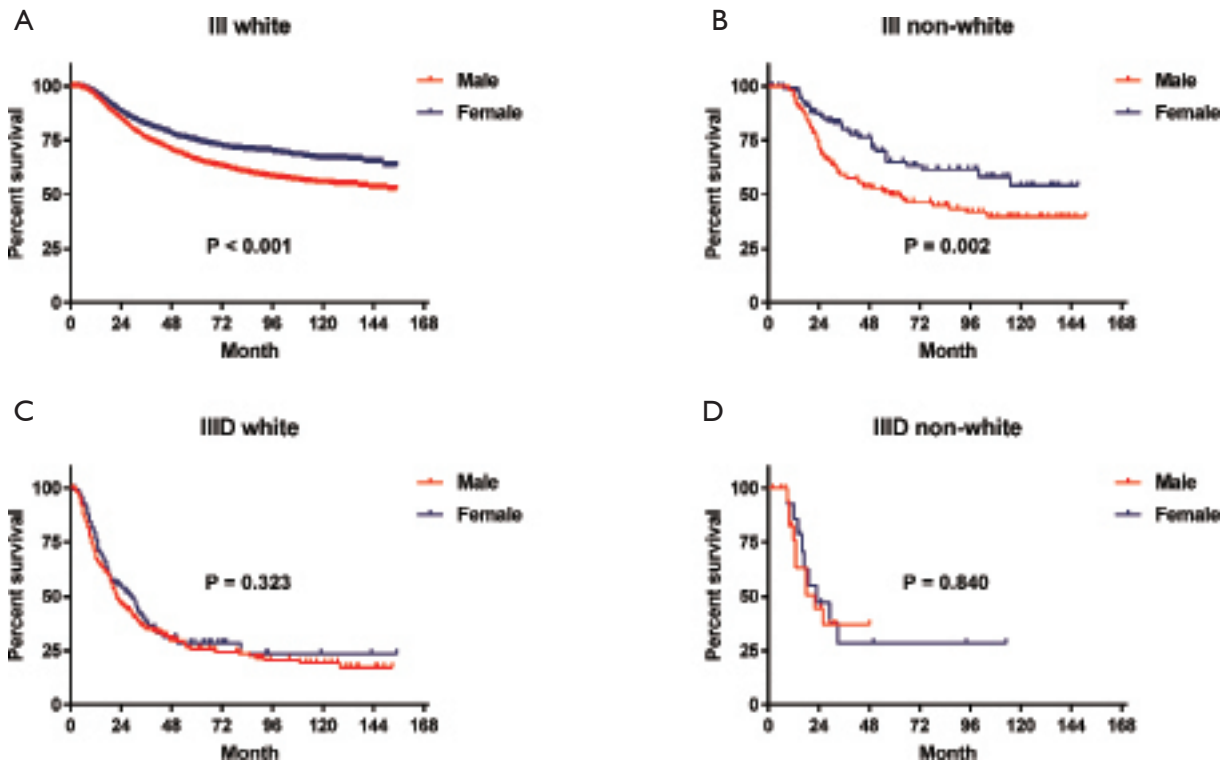


**Supplementary**

**Table S1** Race of patients

Race (%)	All stage III patients (n=8,726)			Stage IIID patients (n=505)		
	Male (n=5,370)	Female (n=3,356)	P value	Male (n=370)	Female (n=135)	P value
White	5,202 (96.9)	3,224 (96.1)	0.045	350 (94.6)	121 (89.7)	0.049
Asian or Pacific Islander	81 (1.5)	57 (1.7)		7 (1.9)	3 (2.2)	
Black	51 (0.9)	55 (1.6)		9 (2.4)	11 (8.1)	
American Indian/Alaska Native	22 (0.4)	9 (0.3)		4 (1.1)	0 (0.0)	
Unknown	14 (0.3)	11 (0.3)		0 (0.0)	0 (0.0)	



**Figure S1** Long-term MSS based on the 8th edition of the TNM staging system grouped by race. (A) Stage III in white patients; (B) stage III in nonwhite patients; (C) stage IIID in white patients; (D) stage IIID in nonwhite patients.