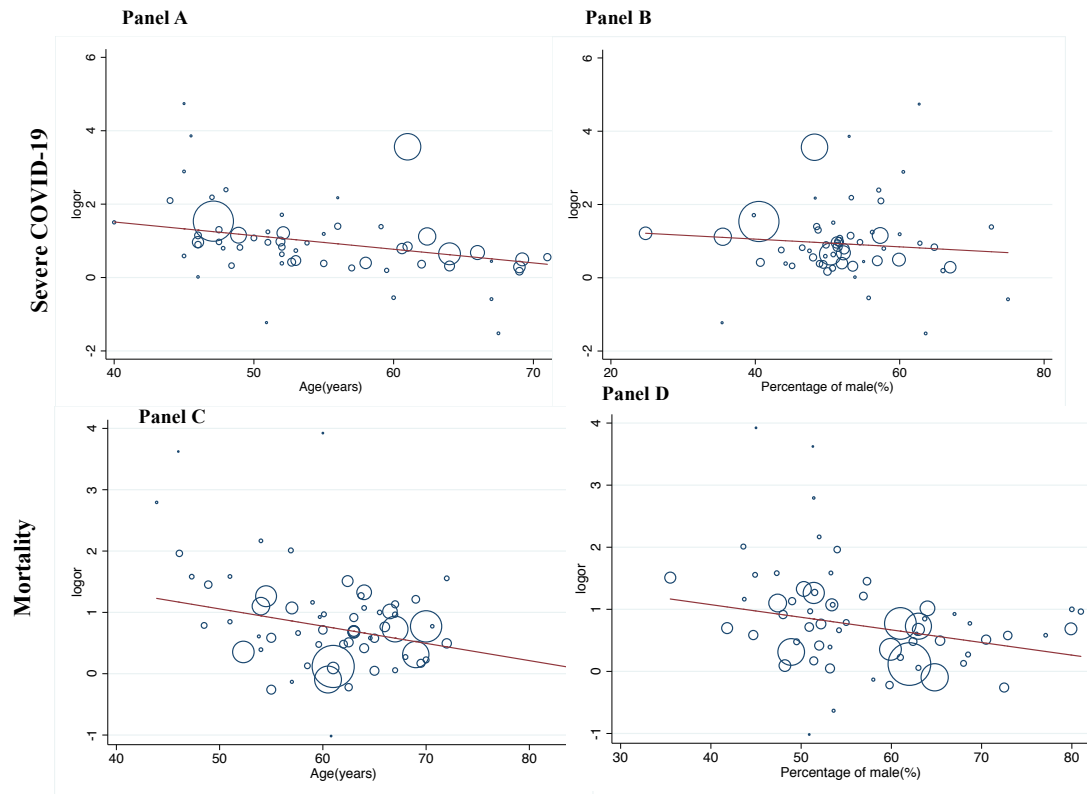
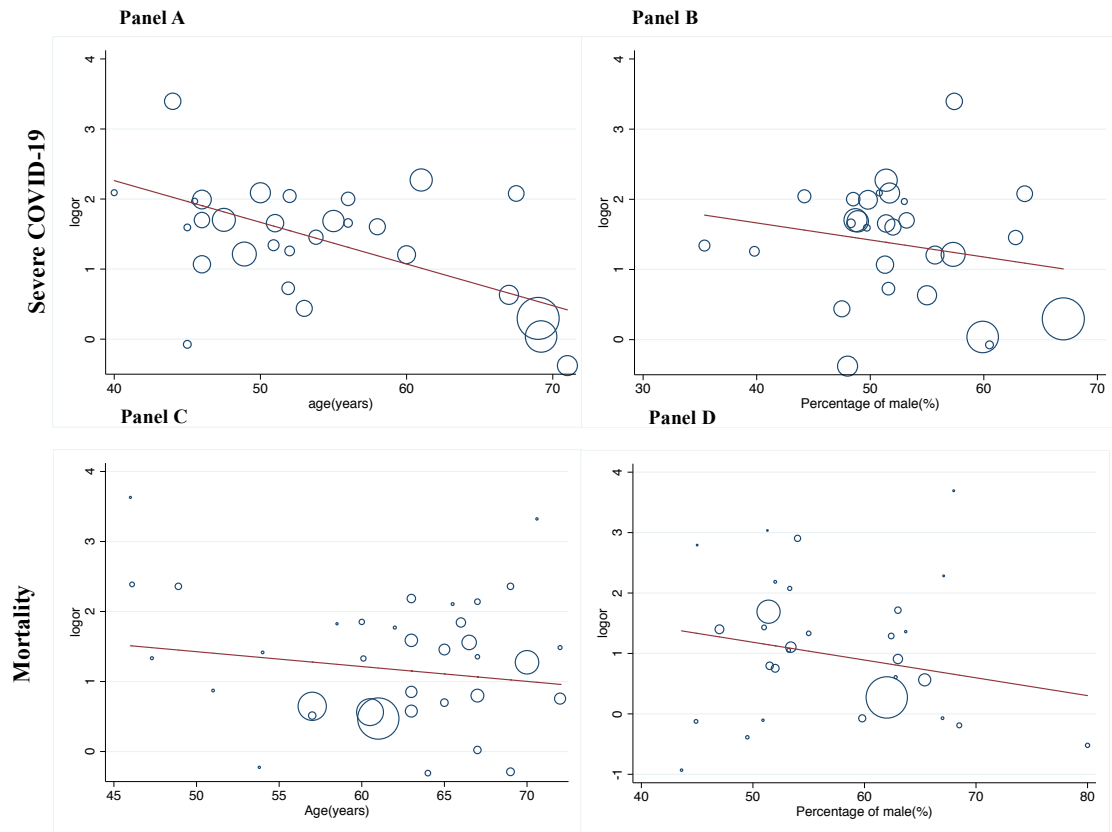


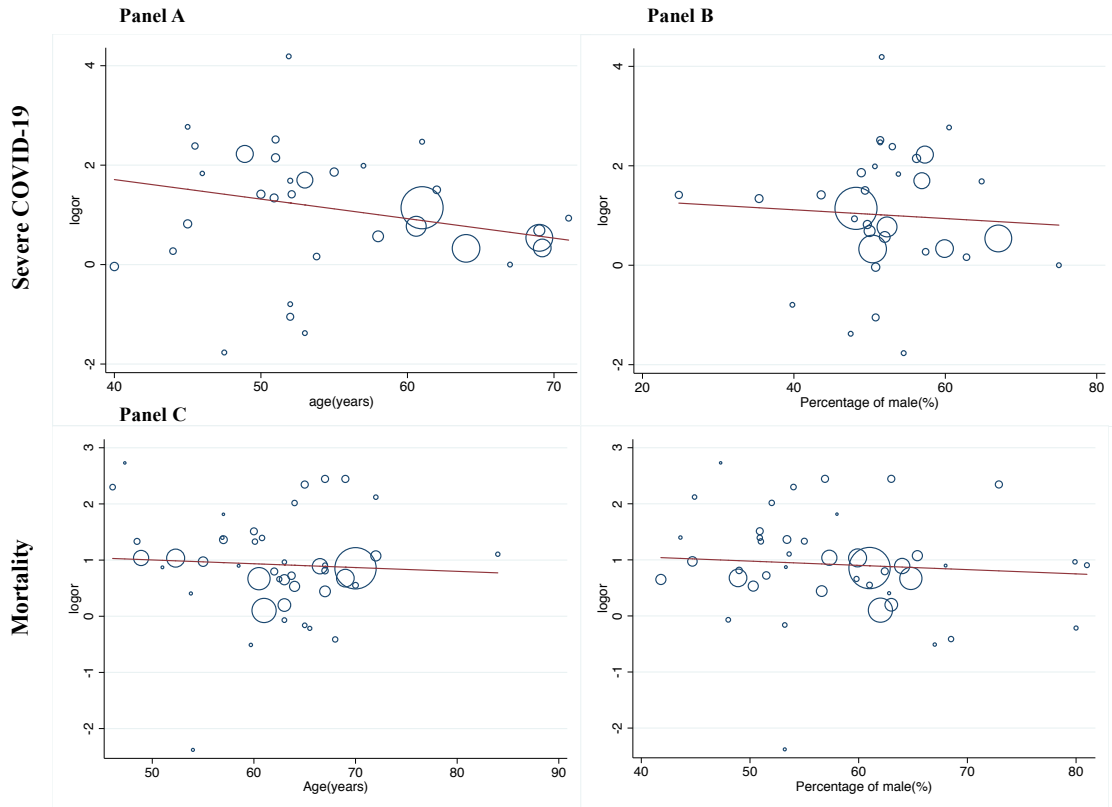
sFig 1: A Univariable linear meta-regression analyses of the association of either age (panels A and C) or sex (panels B and D) the hypertension-related risk of COVID-19 severity or mortality.



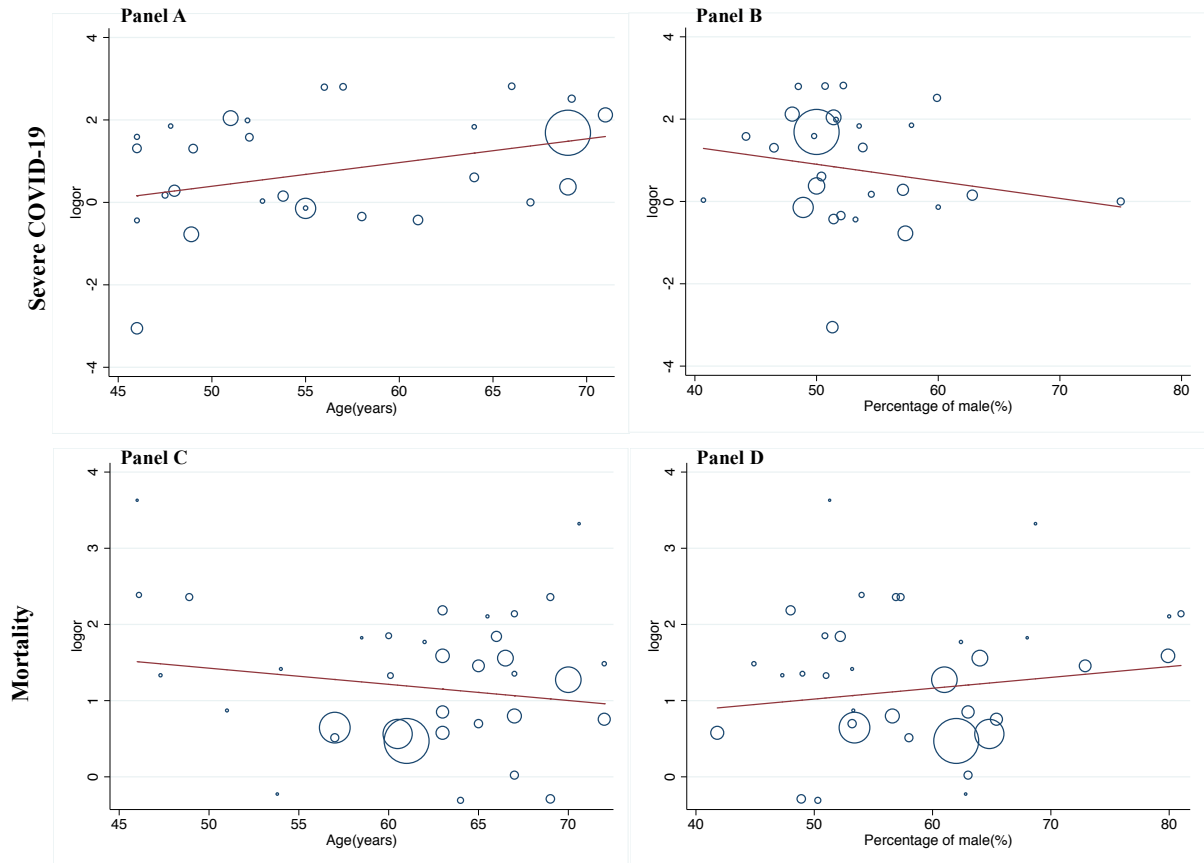
sFig 2: A Univariable linear meta-regression analyses of the association of either age (panels A and C) or sex (panels B and D) the diabetes-related risk of COVID-19 severity or mortality.



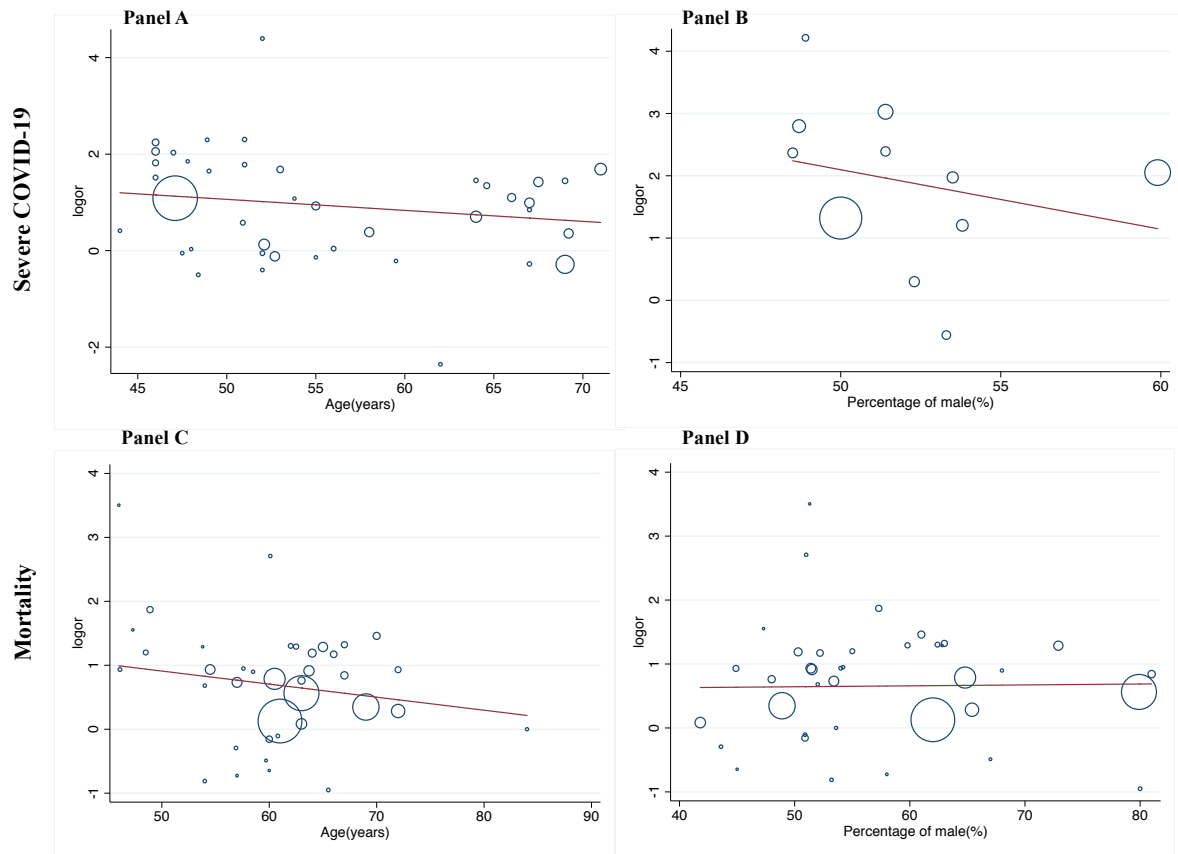
sFig 3: A Univariable linear meta-regression analyses of the association of either age (panels A and C) or sex (panels B and D) the cardiovascular disease-related risk of COVID-19 severity or mortality.



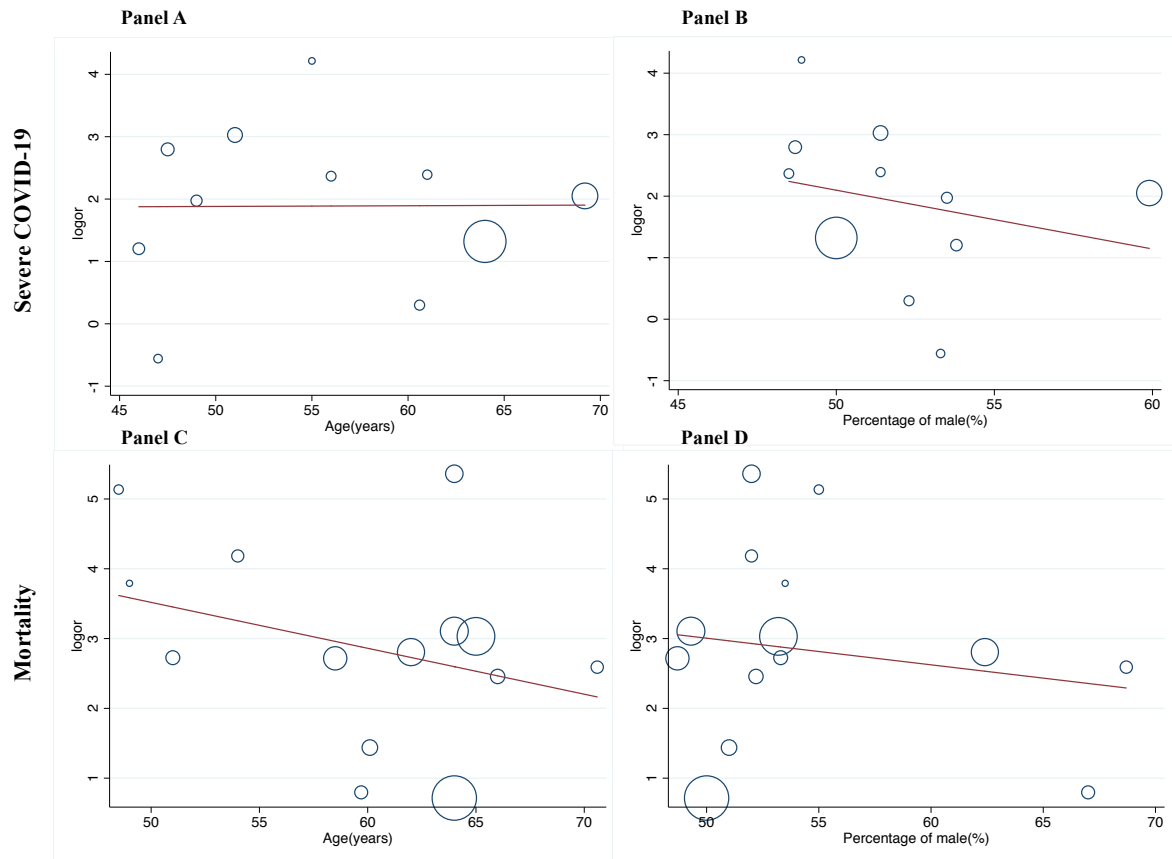
sFig 4: A Univariable linear meta-regression analyses of the association of either age (panels A and C) or sex (panels B and D) the COPD-related risk of COVID-19 severity or mortality.



sFig 5: A Univariable linear meta-regression analyses of the association of either age (panels A and C) or sex (panels B and D) the CKD-related risk of COVID-19 severity or mortality.



sFig 6: A Univariable linear meta-regression analyses of the association of either age (panels A and C) or sex (panels B and D) the cancer-related risk of COVID-19 severity or mortality.



sFig 7: A Univariable linear meta-regression analyses of the association of either age (panels A and C) or sex (panels B and D) the cardiac injury -related risk of COVID-19 severity or mortality.