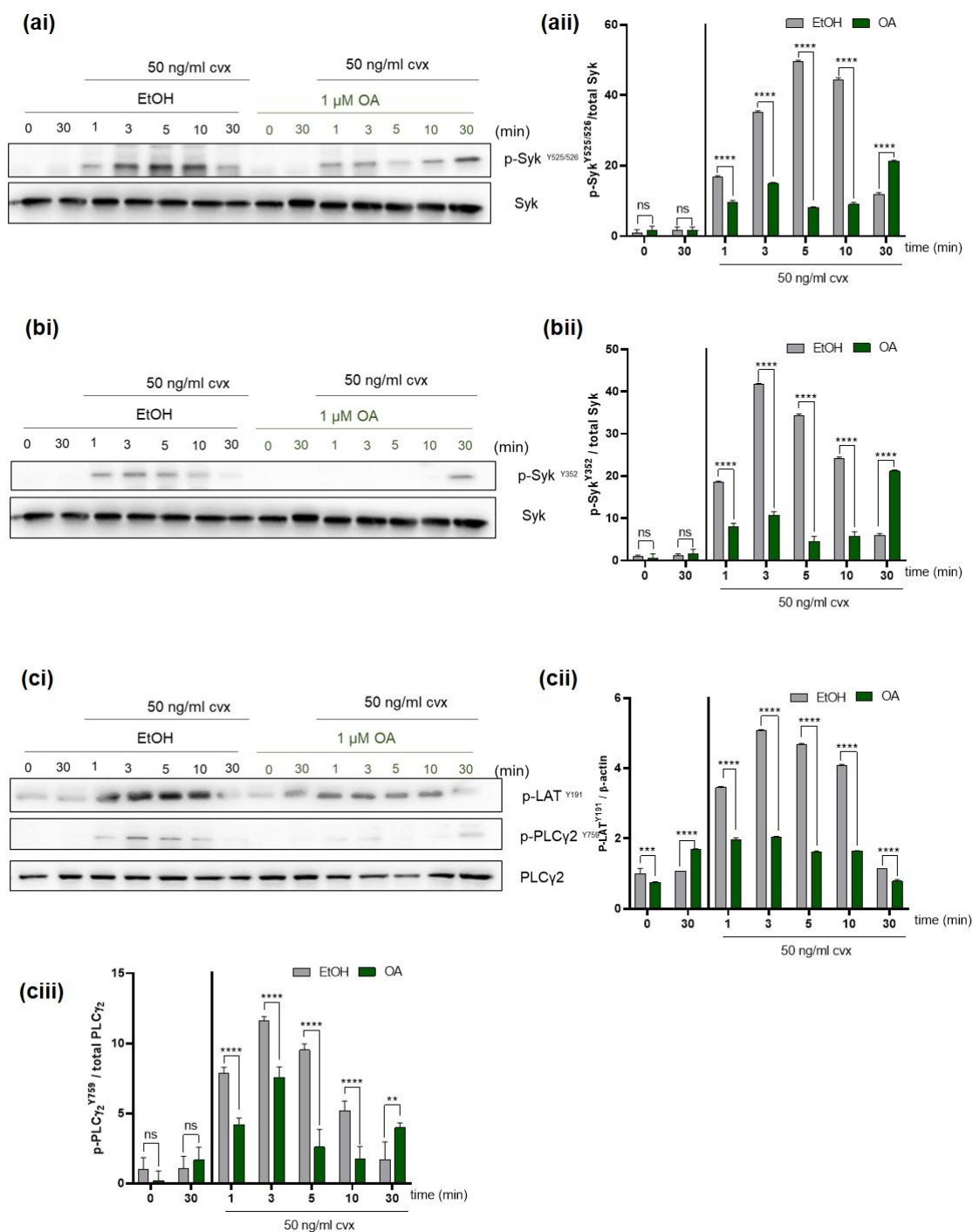




Supplementary Material



**Figure S1.** PP2A inhibition significantly inhibited the transient phosphorylation of Syk Y525/526, Y352 stimulated by Cvx. Washed human platelets were incubated with vehicle control (EtOH) or with 1 μM of the PP2A inhibitor OA for 30 min, followed (in both cases) by the addition of 50 ng/mL Cvx. Samples for western blot analysis were taken at the indicated time points after the addition of Cvx and mixed with Laemmli buffer. Time-dependent phosphorylation of **(ai)** Syk Y525/526, **(bi)** Syk Y352, **(ci)** LAT and PLCγ2 was analyzed by immunoblotting (representative western blots) compared to the corresponding loading control. Quantitative data **(aii, bii, cii, ciii)** are represented as means ± S.D from 4 different experiments (2 biological and 2 technical replicates) with platelets from three different donors. \*\*p<0.01, \*\*\*\*p<0.0001, ns p>0.05.