

Supplementary Figures

E3 ubiquitin ligase APC/C^{Cdh1} regulation of phenylalanine hydroxylase stability and function

Apoorvi Tyagi^{1†}, Neha Sarodaya^{1†}, Kamini Kaushal¹, Arun Pandian Chandrasekaran¹, Ainsley Mike Antao¹, Bharathi Suresh¹, Byung-Ho Rhie¹, Kye-Seong Kim^{1,2*} and Suresh Ramakrishna^{1,2*}

¹Graduate School of Biomedical Science and Engineering, Hanyang University, Seoul, South Korea

²College of Medicine, Hanyang University, Seoul, South Korea

† These authors have contributed equally: Apoorvi Tyagi and Neha Sarodaya

***Corresponding authors**

SR (E-mail: suri28@hanyang.ac.kr, suresh.ramakris@gmail.com);

KS (E-mail: ks66kim@hanyang.ac.kr)

Table of Contents

Figure S1: A. Comparison of PAH expression in different tissue types obtained from The Human Protein Atlas. B. Representative immunohistochemical staining of endogenous PAH and Cdh1 in human liver (Tumor) and non-neoplastic tissue (Normal).

Table S1: Oligonucleotides used for sgRNA plasmid construction.

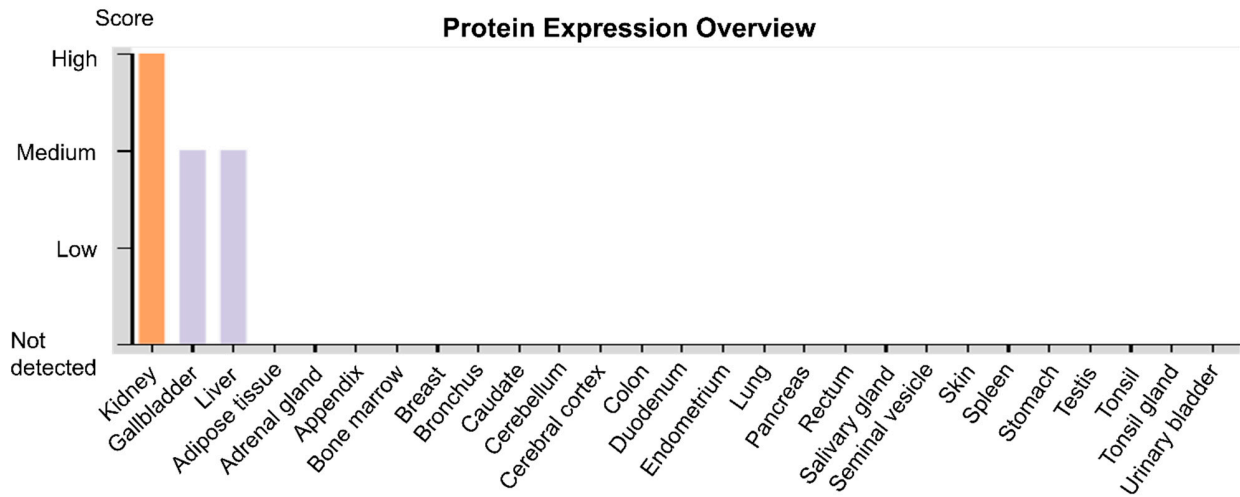
Table S2: Oligonucleotide sequences used to get PCR amplicon for T7E1 assay.

Table S3: PCR amplicon and cleavage sizes after T7E1 assay.

Figure S2. The original uncropped images for immunoblots in the main figures.

Figure S1

A.



B.

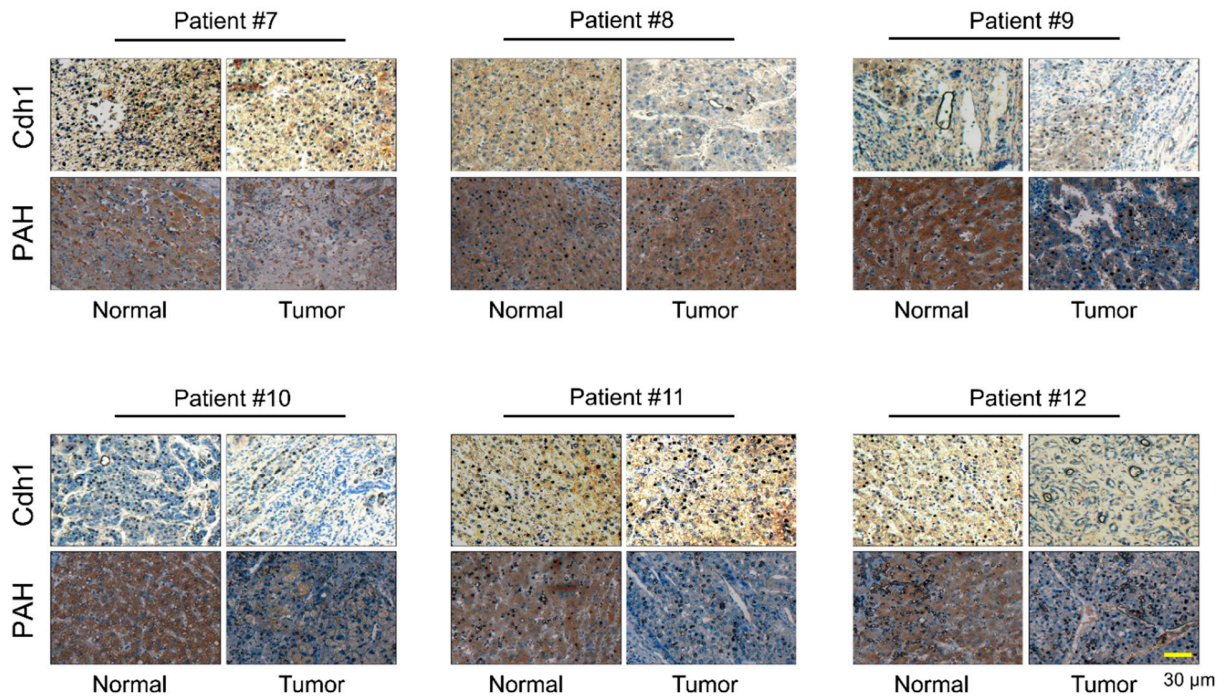


Figure S1: A. Comparison of PAH expression in different tissue types obtained from The Human Protein Atlas. Moderate to strong PAH protein expression was observed in Kidney, Liver and Gallbladder tissues. B. Representative immunohistochemical staining of endogenous PAH and Cdh1 in human liver (Tumor) and non-neoplastic tissue (Normal). Scale bar = 30 μ m

Table S1: Oligonucleotides used for sgRNA plasmid construction.

Gene	sgRNA	Direction	Sequence (5' to 3')
<i>Cdh1</i>	sgRNA1	FP	GCAGTACACGGAGCACCTGG
		RP	CCAGGTGCTCCGTGTACTGC
	sgRNA2	FP	CGCTTCTGGAACACGCTGAC
		RP	GTCAGCGTGTTCCAGAAGCG

Table S2: Oligonucleotide sequences used to get PCR amplicon for T7E1 assay.

Gene	sgRNA	Direction	Sequence (5' to 3')
<i>Cdh1</i>	sgRNA1 and sgRNA2	FP	AACGACAACAAGGTACCCCC
		FP1	GCTGCTGGTCTGGAATCACT
		RP	CTATGCCTGCTGCCTCACAT
		RP1	CCATCTCCCTTCAGAGCGAC

Table S3: PCR amplicon and cleavage sizes after T7E1 assay.

Gene	sgRNA	PCR size	Cleavage size	Orientation
<i>Cdh1</i>	sgRNA1	355	299+56	Sense
	sgRNA2	355	151+196	Sense

Figure S2. The original uncropped images for immunoblots in the main figures.

Figure 1A

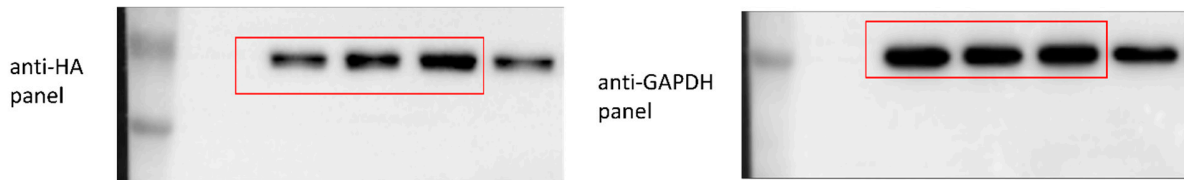


Figure 1B

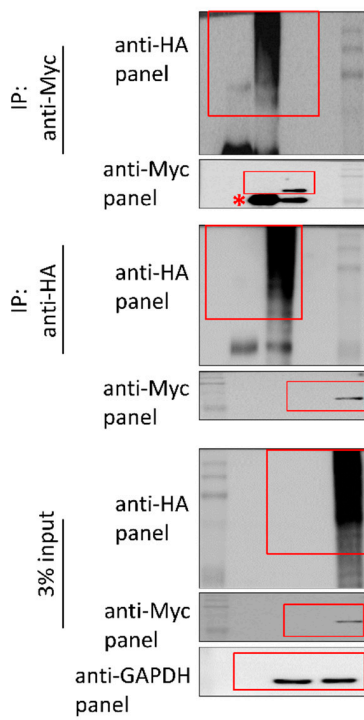


Figure 1C

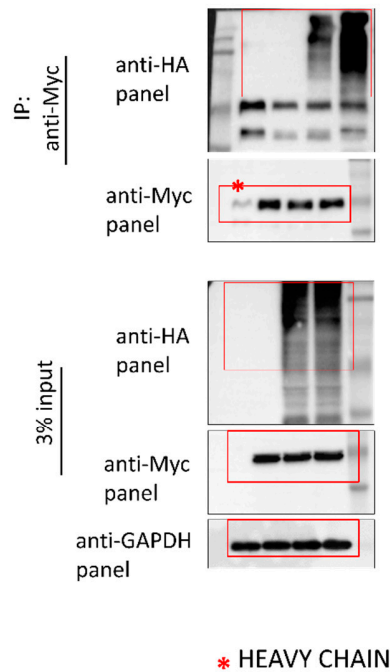


Figure 1D

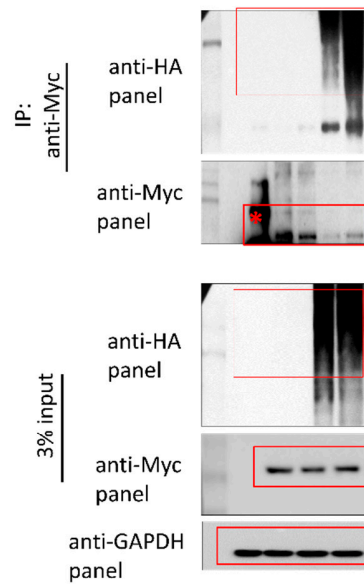


Figure 2A

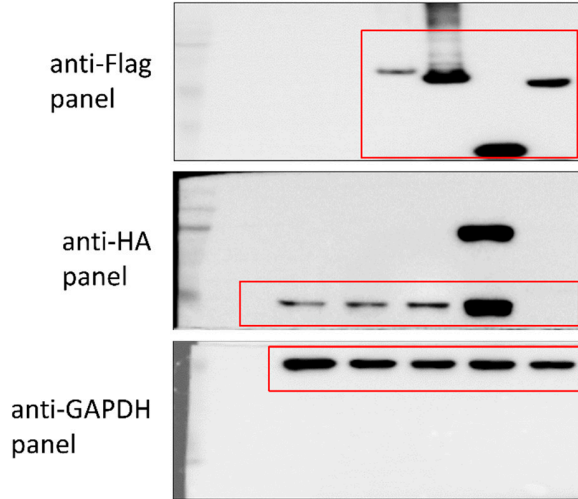


Figure 2B

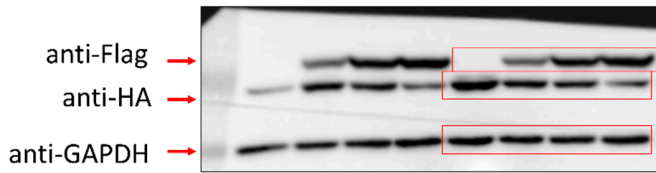


Figure 2C

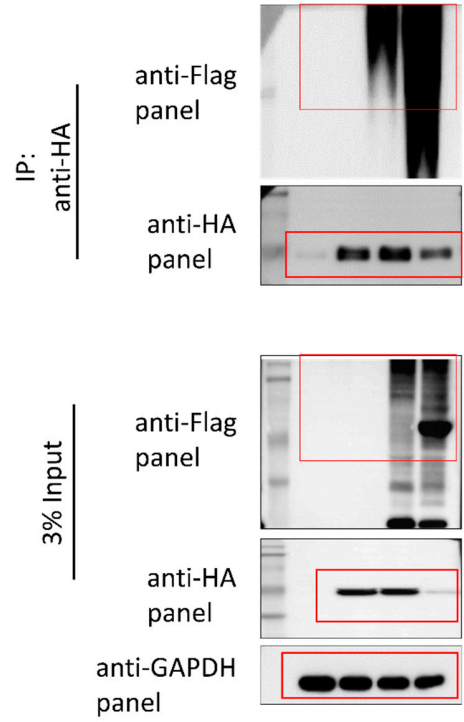


Figure 3C

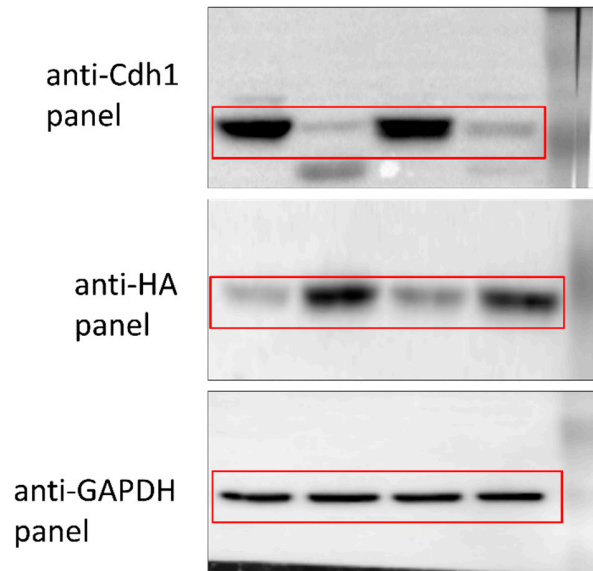


Figure 4A

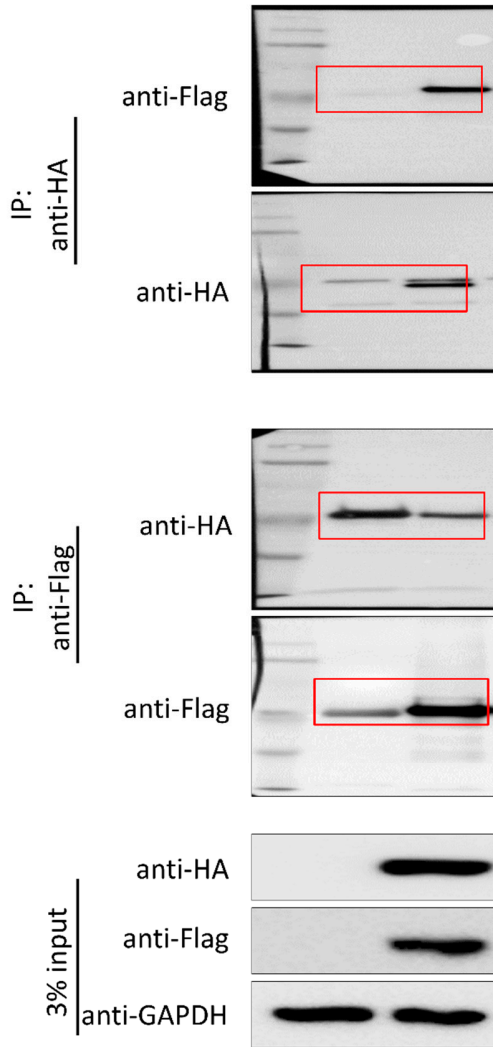


Figure 4B

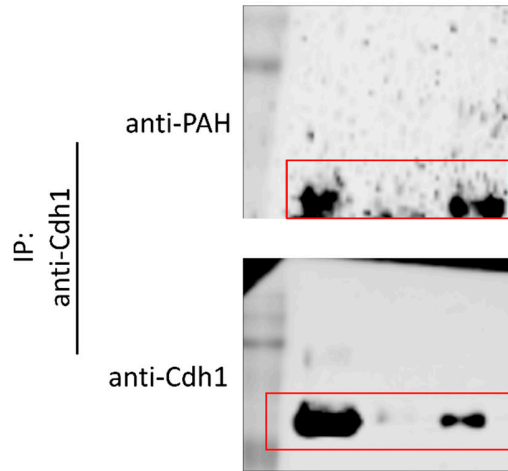


Figure 5A

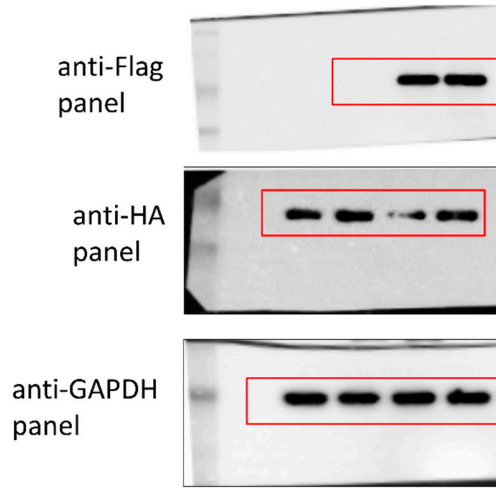


Figure 5B

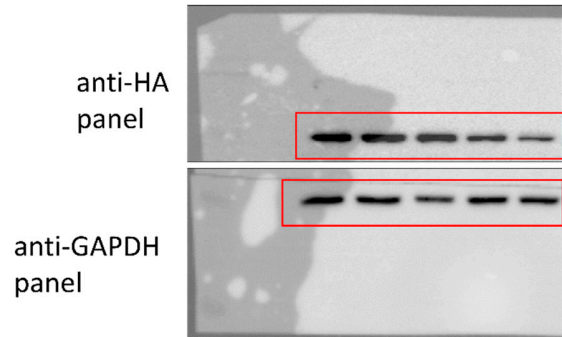


Figure 5C

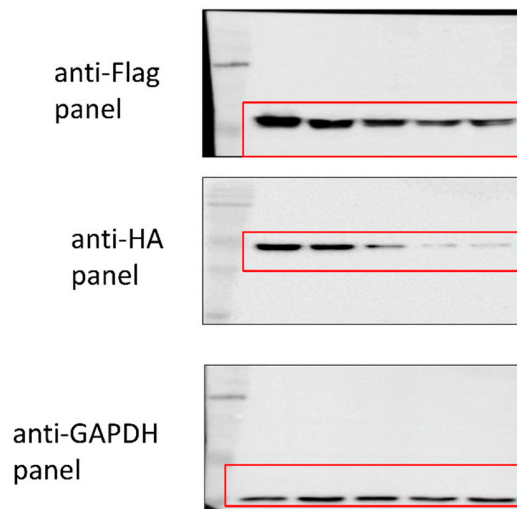


Figure 6A

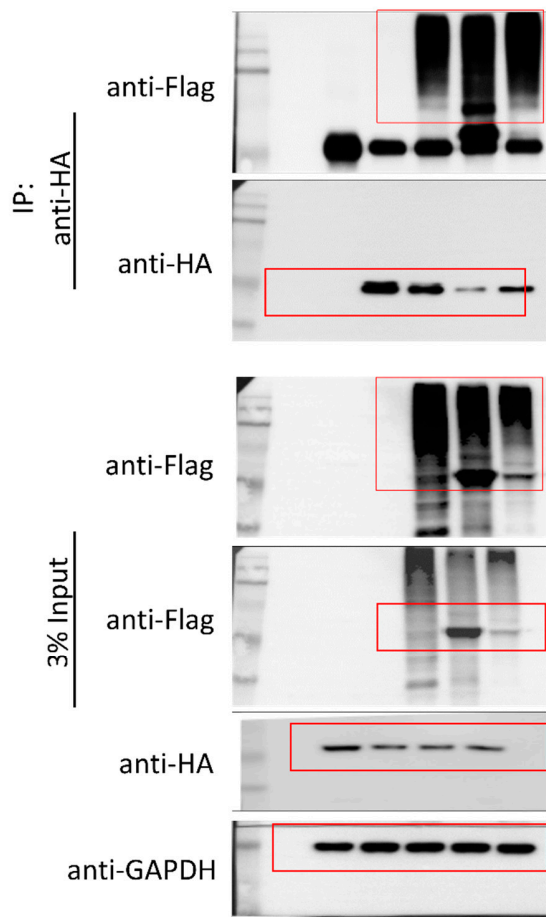


Figure 6B

