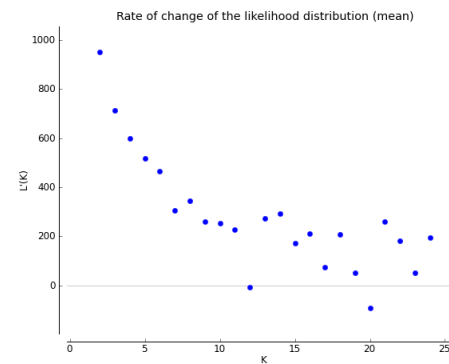
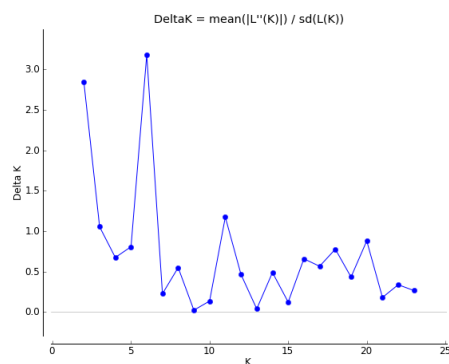
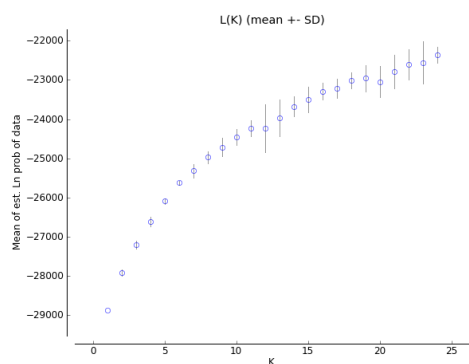
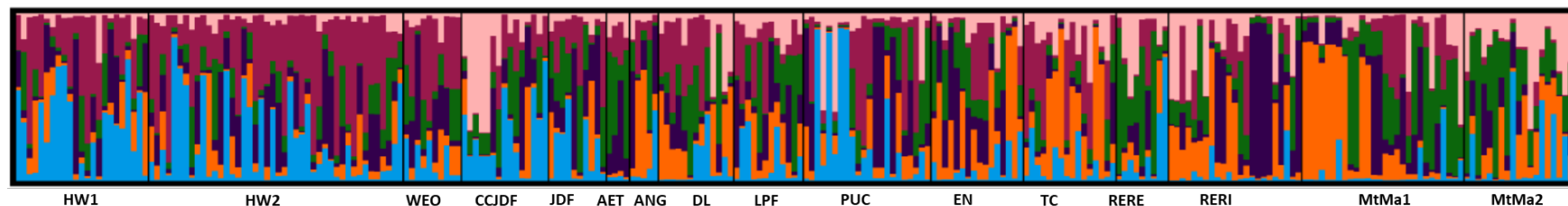


S7 Fig. STRUCTURE results for the reference data sets C and F based on 12 nSSR markers. Plots for data sets C and F are presented for the most likely number of clusters (K) inferred without (a) and with (b) the 'locprior' function (K=6 and K=2 for C and K=2 for F, respectively). L(K) and ΔK statistics generated by the ClumpPAK software are also presented.

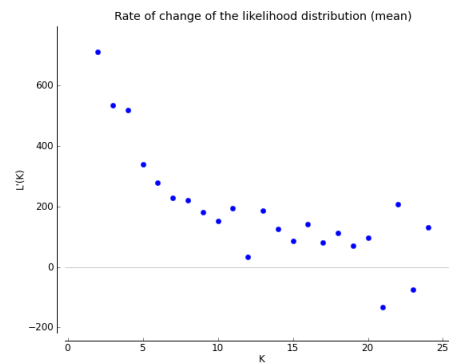
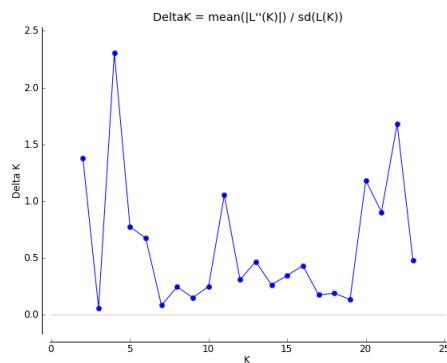
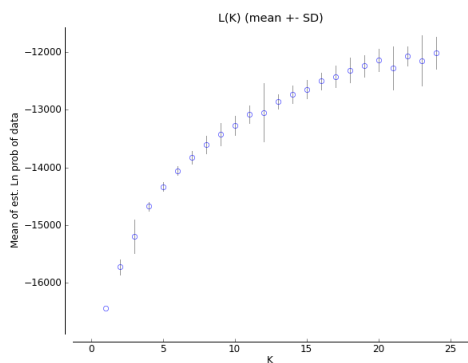
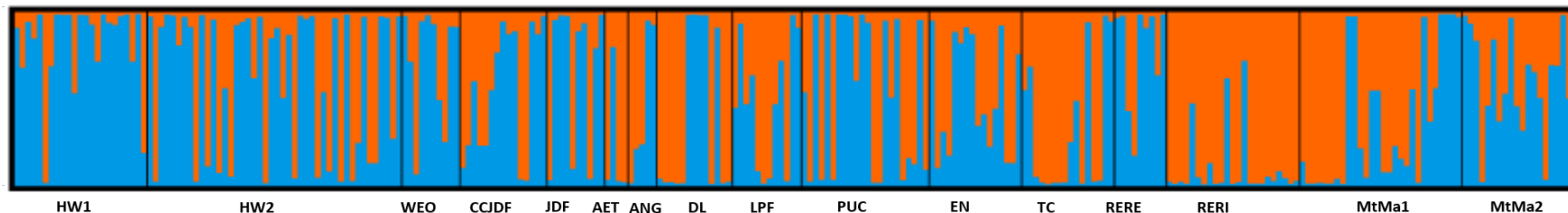
C (a)

K=6



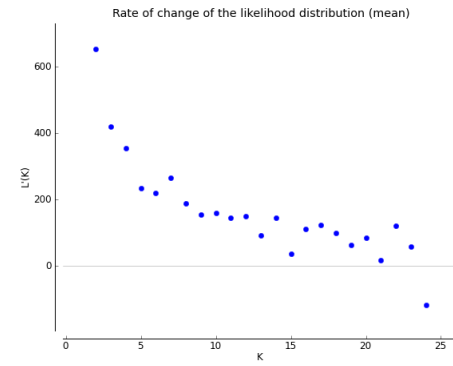
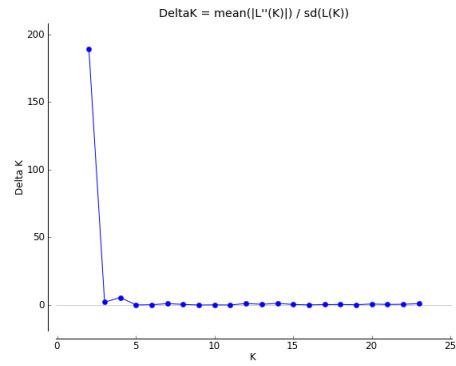
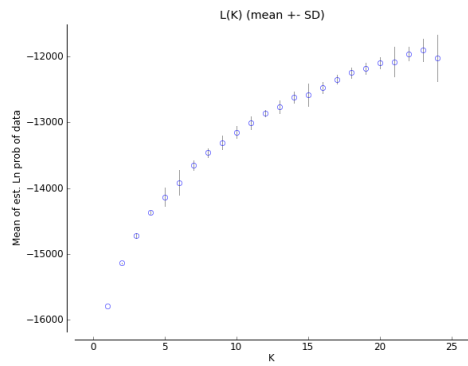
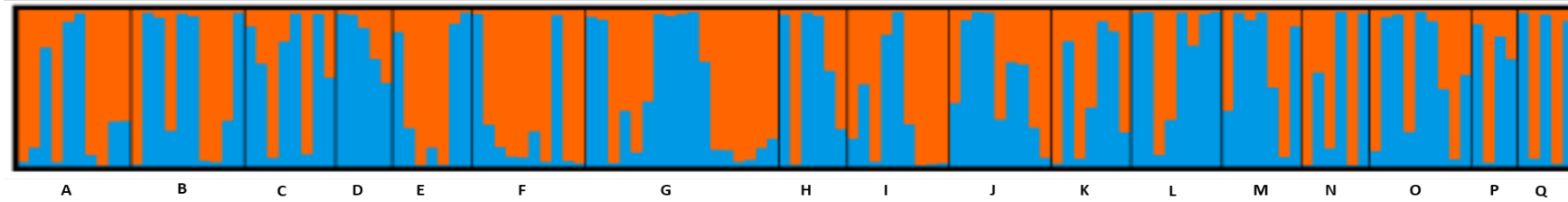
C (b)

K=2



K=2

F (a)



K=2

F (b)

