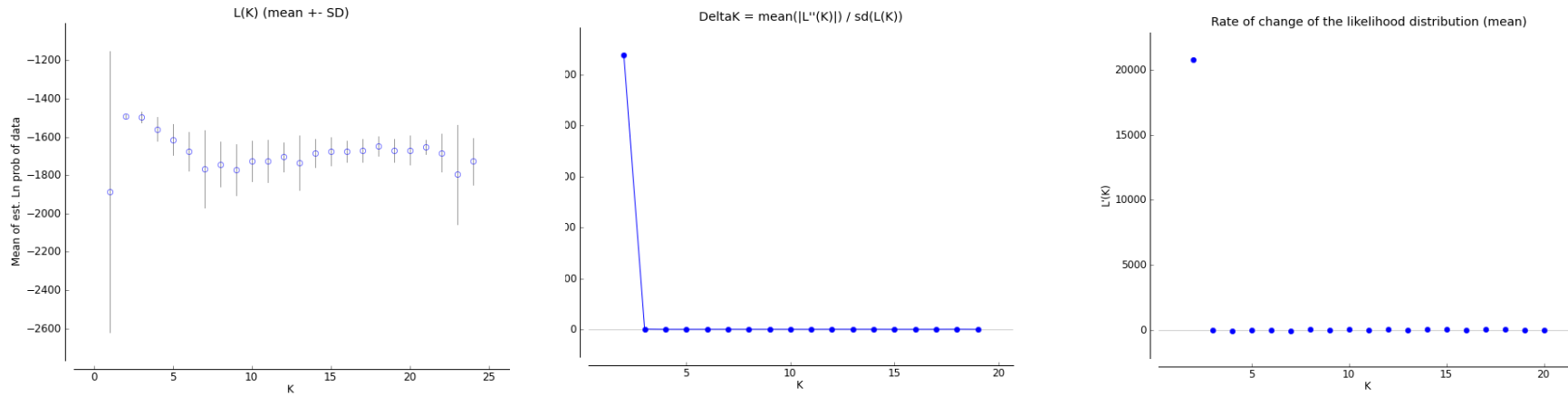
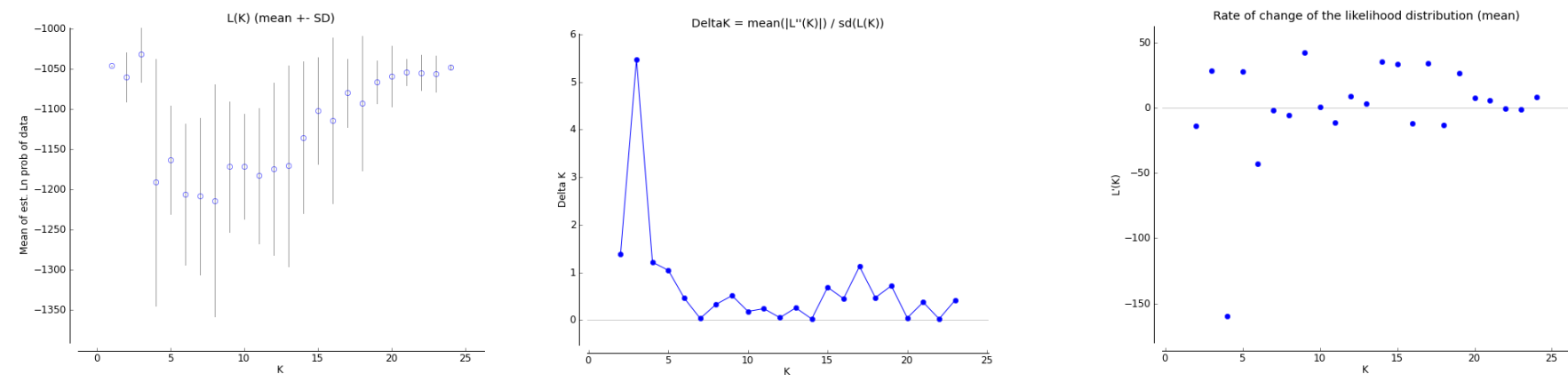


**S8 Fig. STRUCTURE statistics for the reference data sets C and F based on 6 cpSSR markers.** Presented are the most likely number of clusters (K) and results of STRUCTURE runs for K from 1 to 20 or 25 with 20 iterations each for the complete data set C (a), northern subset C (b), southern subset C (c), complete data set F (d), northern subset F (e), and southern subset F (f).

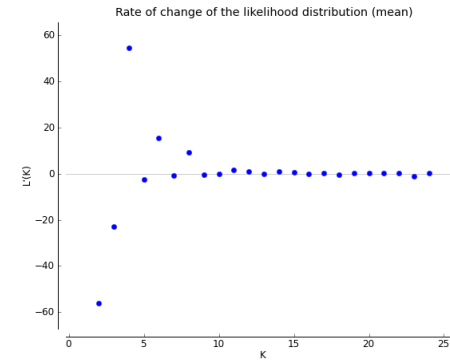
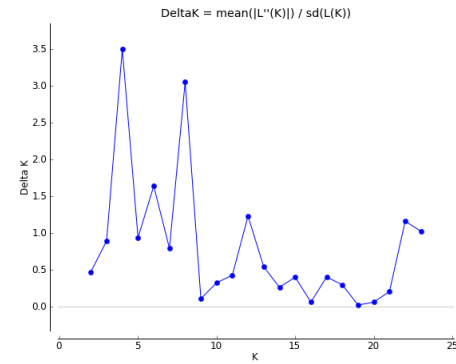
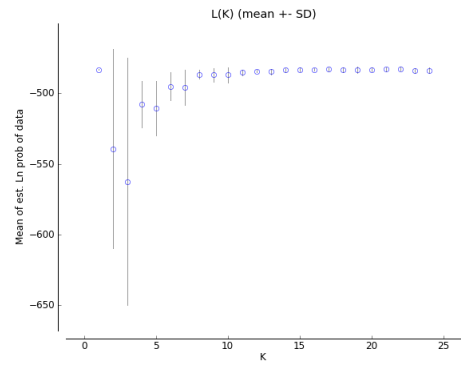
C (a)



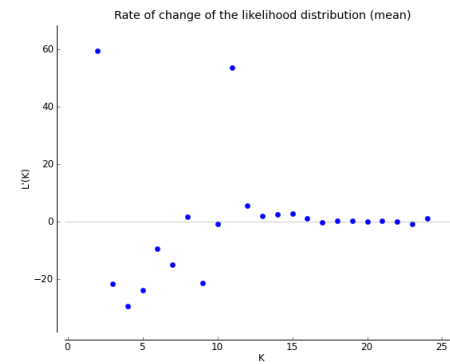
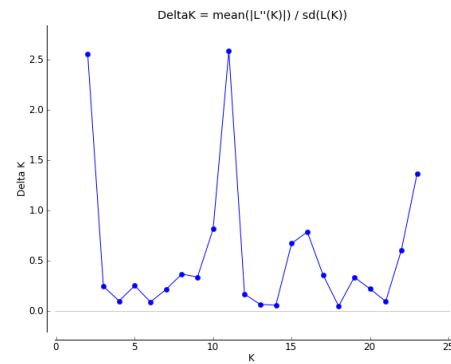
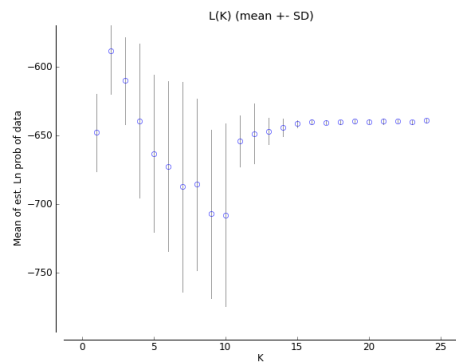
C (b)



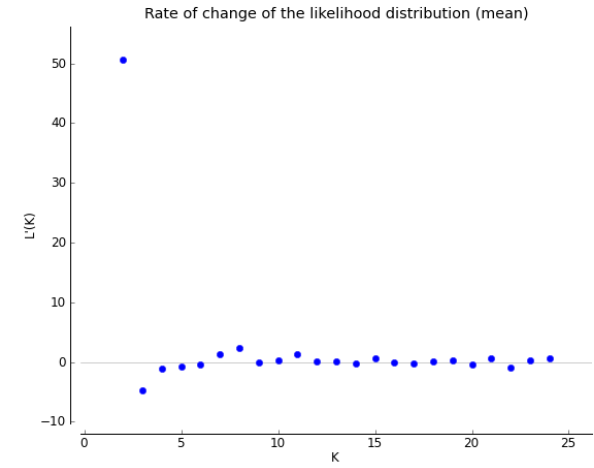
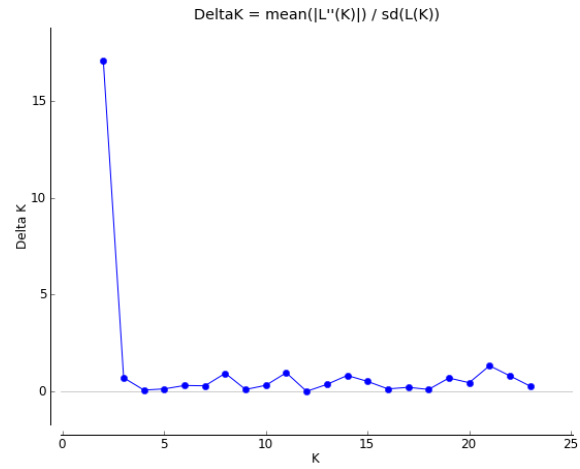
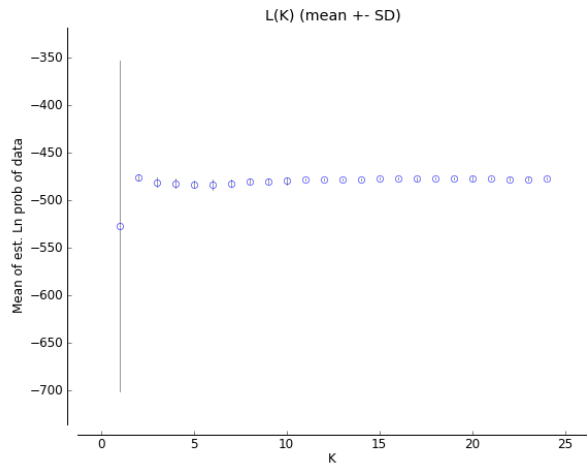
(c) southern subset of data set C, K=4



(d) complete data set F, K=2



(e) northern subset of data set F, K=2



(f) southern subset of data set F, K=2

