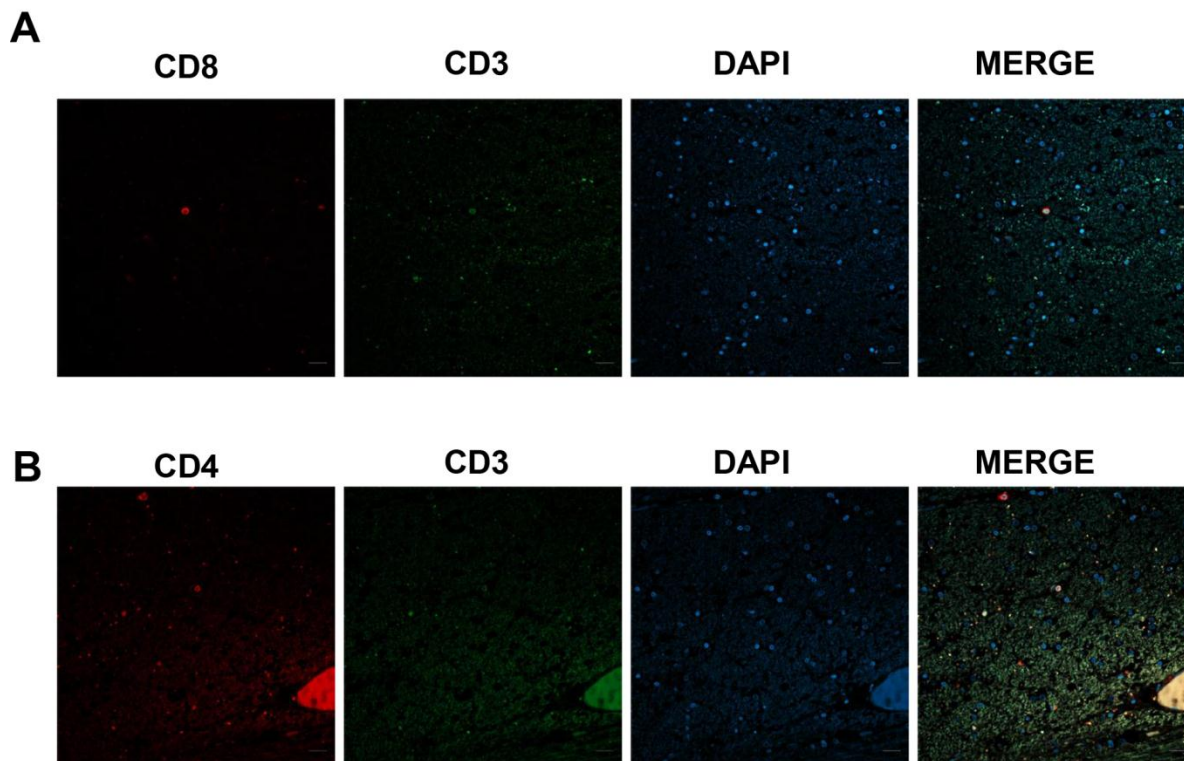
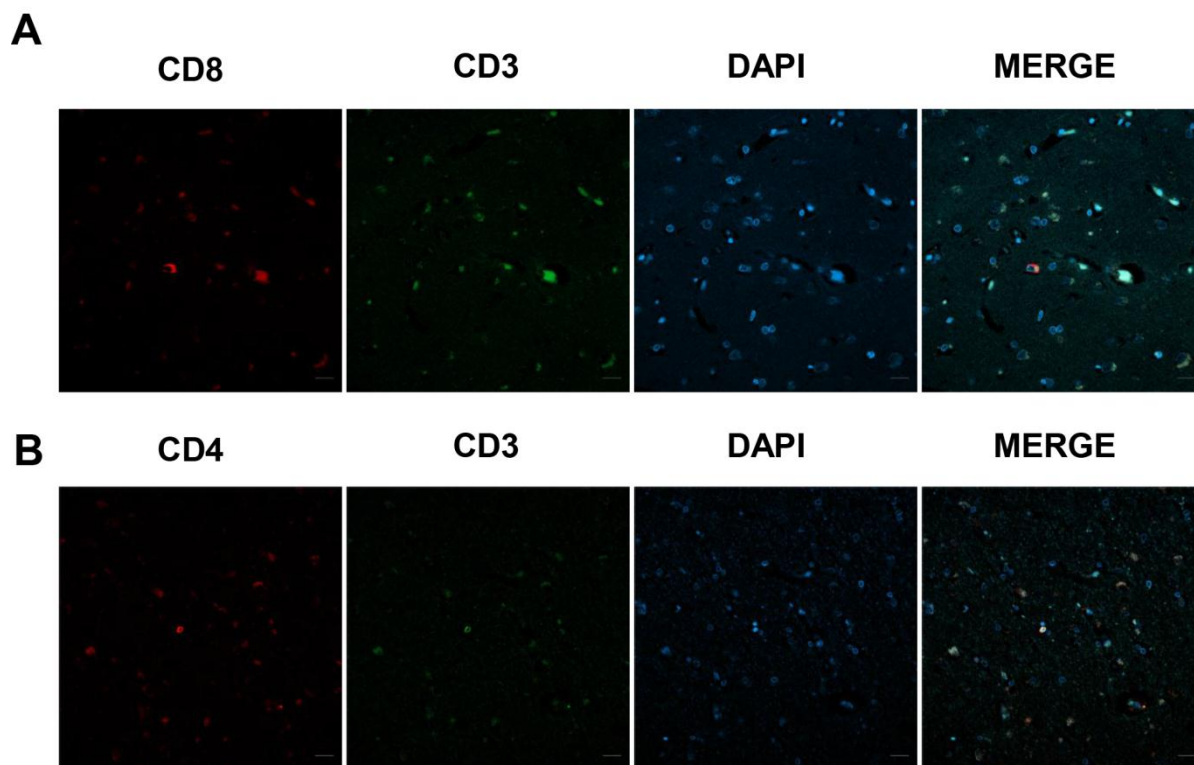


White Matter



Supplementary Figure 1. Presence of cytotoxic CD8⁺ cells in white matter of patients with neurodegenerative diseases. (A) Co-immunofluorescence of CD8 with CD3 marker. **(B)** Co-immunofluorescence of CD3 with CD4 marker (n=2). Cell nuclei were counterstained with DAPI. Scale bar: 20 μ m.

Entorhinal Cortex



Supplementary Figure 2. Presence of cytotoxic CD8⁺ cells in entorhinal cortex of patients with neurodegenerative diseases. (A) Co-immunofluorescence of CD8 with CD3 marker. (B) Co-immunofluorescence of CD3 with CD4 marker (n=2). Cell nuclei were counterstained with DAPI. Scale bar: 20 μ m.