

**OMTN, Volume 23**

## **Supplemental Information**

**Mesenchymal stem-cell-derived exosomal miR-145**

**inhibits atherosclerosis by targeting JAM-A**

**Wenzhi Yang, Ruihua Yin, Xiaoyan Zhu, Shaonan Yang, Jing Wang, Zhenfeng Zhou, Xudong Pan, and Aijun Ma**

## Supplemental Table

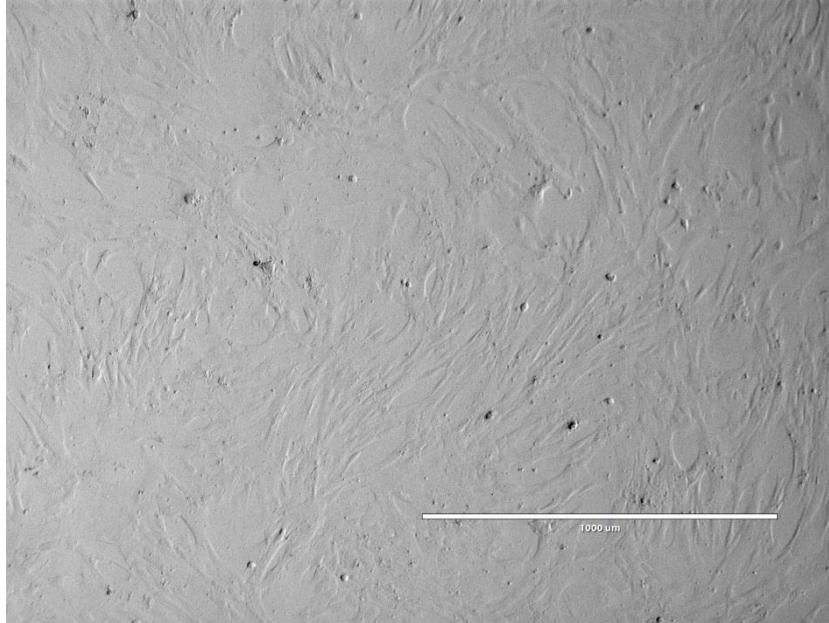
Transcript ID	P1	P2	P3	P4	C1	C2	C3	C4
hsa-miR-6089	5.8815	6.0176	5.7092	4.3186	2.2838	2.6094	2.5926	2.6583
hsa-miR-3665	4.4228	5.0276	7.3948	4.67	1.8467	1.7191	1.1376	1.8115
hsa-miR-4466	3.8841	3.8076	6.1035	3.3982	1.4404	1.2016	1.3974	1.531
hsa-miR-145	6.7248	6.1233	7.8497	5.9933	4.9387	4.5193	4.2401	4.1014
hsa-miR-3960	6.3261	6.3688	7.7269	5.2343	3.3909	3.3853	2.7259	5.0171
hsa-miR-1469	4.1899	4.0587	3.8483	3.6882	1.8238	1.8922	1.6912	1.4966
hsa-miR-3613-3p	6.1073	7.0654	6.3914	4.5679	2.0186	3.2702	3.3866	6.3175
hsa-miR-4787-5p	7.2113	5.6436	6.9859	5.4183	3.9602	3.1439	3.6521	4.7259
hsa-miR-5787	7.7236	6.5041	6.729	6.2476	5.1015	4.5979	4.8702	5.0753
hsa-miR-1915-3p	3.8927	3.074	4.0786	3.5911	1.193	1.3696	1.7142	1.8382
hsa-miR-6087	3.4074	2.2656	5.0034	3.8213	1.9509	1.5661	1.3693	1.3529
hsa-miR-3620-5p	4.6507	3.0296	3.8177	3.3685	1.8679	1.6031	1.7307	1.2559
hsa-miR-6869-5p	3.7276	3.8349	3.8683	3.4293	1.5147	1.8348	1.7891	1.7084

**Supplemental Table S1. Relative expression of the top 10 DEGs**

Gene Name	Tarbase Methods
PRKCA	HITS-CLIP
ITGB1	qPCR
MAPK14	Western Blot
ACTG1	Multiple
OCLN	qPCR
MSN	qPCR
PTK2	qPCR
MMP2	Multiple
CTNNB1	qPCR
MMP9	Multiple
RAC1	qPCR
F11R	Multiple

**Supplemental Table S2. The predicted target genes of miR-145**

## Supplemental figure and figure legend



**Supplementary Figure S1. The isolated HUC-MSCs.**

The scale bar= 1000μm.