

Epidemiology of depressive disorders in people living with hypertension in Africa: a systematic review and meta-analysis

Francky Teddy **Endomba**, Mazou N. **Temgoua**, Jean Joel **Bigna**

APPENDIX

Supplementary Table 1. Search strategy.....	2
Supplementary Table 2. Methodological quality of included studies.....	4
Supplementary Figure 1. PRISMA flow diagram	5
Supplementary Figure 2. Meta-analysis prevalence of depressive disorders by setting.....	6
Supplementary Figure 3. Meta-analysis prevalence of depressive symptoms by setting	6
Supplementary Figure 4. Meta-analysis prevalence of major depressive disorders by setting	7
Supplementary Figure 5. Meta-analysis prevalence of depressive disorders by sex.....	8
Supplementary Figure 6. Meta-analysis prevalence of depressive symptoms by sex	8

Supplementary Table 1. Search strategy

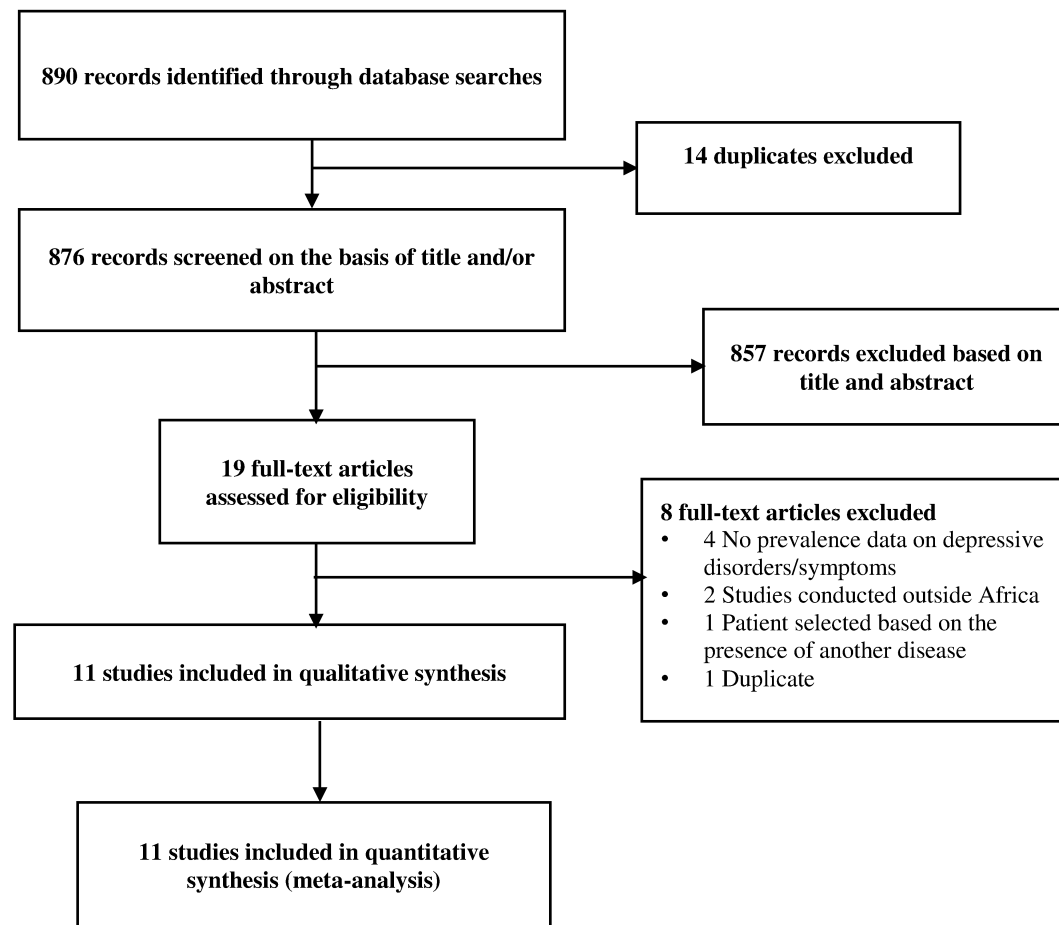
Search	Search terms
#1	'africa'/exp OR africa OR 'algeria'/exp OR algeria OR 'angola'/exp OR angola OR 'benin'/exp OR benin OR 'botswana'/exp OR botswana OR 'burkina faso'/exp OR 'burkina faso' OR 'burundi'/exp OR burundi OR 'cameroon'/exp OR cameroon OR 'canary islands'/exp OR 'canary islands' OR 'cape verde'/exp OR 'cape verde' OR 'central african republic'/exp OR 'central african republic' OR 'chad'/exp OR chad OR 'comoros'/exp OR comoros OR 'congo'/exp OR congo OR 'democratic republic of congo' OR 'djibouti'/exp OR djibouti OR 'egypt'/exp OR egypt OR 'equatorial guinea'/exp OR 'equatorial guinea' OR 'eritrea'/exp OR eritrea OR 'ethiopia'/exp OR ethiopia OR 'gabon'/exp OR gabon OR 'gambia'/exp OR gambia OR 'ghana'/exp OR ghana OR 'guinea'/exp OR guinea OR 'guinea bissau'/exp OR 'guinea bissau' OR 'ivory coast'/exp OR 'ivory coast' OR 'cote ivoire' OR 'jamahiriya' OR 'kenya'/exp OR kenya OR 'lesotho'/exp OR lesotho OR 'liberia'/exp OR liberia OR 'libya'/exp OR libya OR 'madagascar'/exp OR madagascar OR 'malawi'/exp OR malawi OR 'mali'/exp OR mali OR 'mauritania'/exp OR mauritania OR 'mauritius'/exp OR mauritius OR 'mayotte'/exp OR mayotte OR 'morocco'/exp OR morocco OR 'mozambique'/exp OR mozambique OR 'namibia'/exp OR namibia OR 'niger'/exp OR niger OR 'nigeria'/exp OR nigeria OR 'principe' OR 'reunion'/exp OR reunion OR 'rwanda'/exp OR rwanda OR 'sao tome' OR 'senegal'/exp OR senegal OR 'seychelles'/exp OR seychelles OR 'sierra leone'/exp OR 'sierra leone' OR 'somalia'/exp OR somalia OR 'south africa'/exp OR 'south africa' OR 'st helena'/exp OR 'st helena' OR 'sudan'/exp OR sudan OR 'swaziland'/exp OR swaziland OR 'tanzania'/exp OR tanzania OR 'togo'/exp OR togo OR 'tunisia'/exp OR tunisia OR 'uganda'/exp OR uganda OR 'western sahara'/exp OR 'western sahara' OR 'zaire'/exp OR zaire OR 'zambia'/exp OR zambia OR 'zimbabwe'/exp OR zimbabwe OR 'central africa'/exp OR 'central africa' OR 'central african'/exp OR 'central african' OR 'west africa'/exp OR 'west africa' OR 'west african'/exp OR 'west african' OR 'western africa'/exp OR 'western africa' OR 'western african'/exp OR 'western african' OR 'east africa'/exp OR 'east africa' OR 'east african'/exp OR 'east african' OR 'eastern africa'/exp OR 'eastern african' OR 'north africa'/exp OR 'north africa' OR 'north african'/exp OR 'north african' OR 'northern africa'/exp OR 'northern africa' OR 'northern african'/exp OR 'northern african' OR 'south african'/exp OR 'south african' OR 'southern africa'/exp OR 'southern africa' OR 'southern african'/exp OR 'southern african' OR 'sub saharan africa'/exp OR 'sub saharan africa' OR 'sub saharan african'/exp OR 'sub saharan african' OR 'subsaharan africa'/exp OR 'subsaharan africa' OR 'subsaharan african'
#2	'depression'/exp OR depression OR 'depressive disorder'/exp OR 'depressive disorder' OR 'depressive symptom'/exp OR 'depressive symptom' OR 'depressive neuros*' OR 'depressive syndrome*'

#3	'hypertension'/exp OR hypertension OR 'high blood pressure'/exp OR 'high blood pressure' OR (high AND ('blood'/exp OR blood) AND ('pressure'/exp OR pressure))
#4	#1 AND #2 AND #3

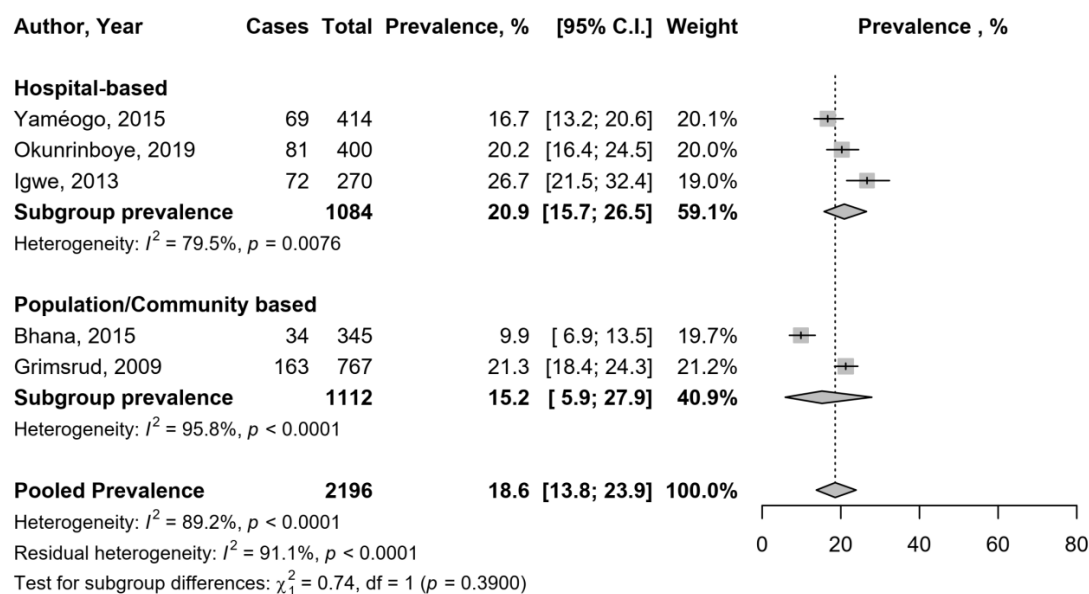
Supplementary Table 2. Methodological quality of included studies

Author, Year	Sampling method	Timing of data collection	Sample size adequate	Response rate	Same method of data collection for all participants	SUMMARY (Risk of bias)
Ademola, 2019	Convenience	Prospectively	No	Not described	Yes	Moderate
Bhana, 2015	Convenience	Prospectively	Yes	Not described	Yes	Moderate
Geldsetzer, 2019	Stratified Random	Prospectively	Yes	Adequate	Yes	Low
Grimsrud, 2009	Stratified Multistage	Prospectively	Yes	Not described	Yes	Low
Hamer, 2012	Convenience	Prospectively	Yes	Not described	Yes	Moderate
Igwe, 2013	Convenience	Prospectively	Yes	Not described	Yes	Moderate
Iloh, 2018	Convenience	Prospectively	Yes	Not described	Yes	Moderate
Kretchy, 2014	Time-Location	Prospectively	Yes	Not described	Yes	Moderate
Okunrinboye, 2019	Systematic Random	Prospectively	Yes	Not described	Yes	Low
Umer, 2019	Convenience	Prospectively	No	Adequate	Yes	Moderate
Yaméogo, 2015	Convenience	Prospectively	Yes	Not described	Yes	Moderate

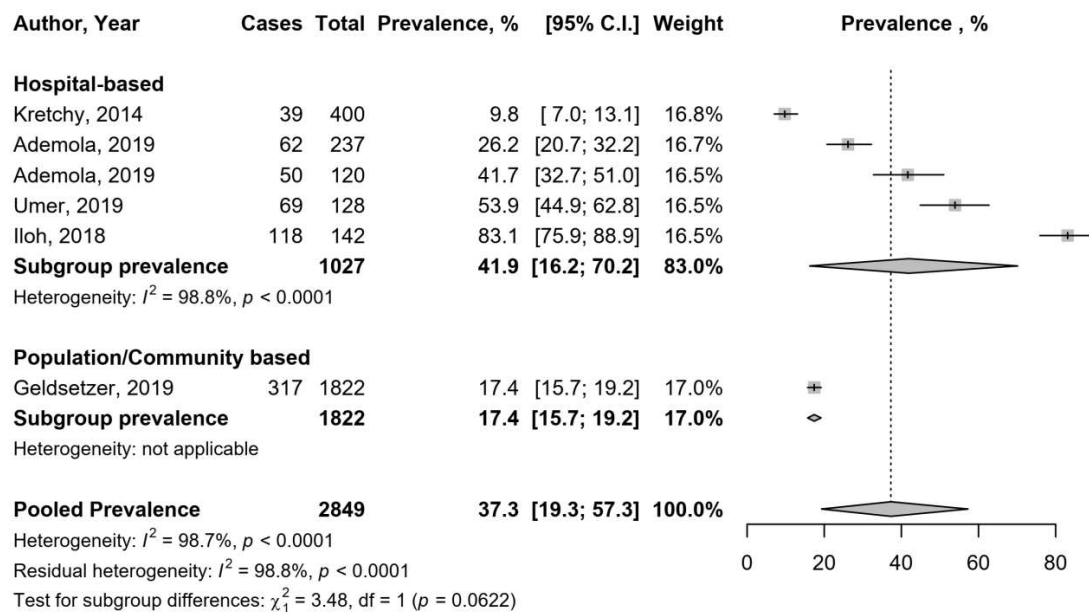
Supplementary Figure 1. PRISMA flow diagram



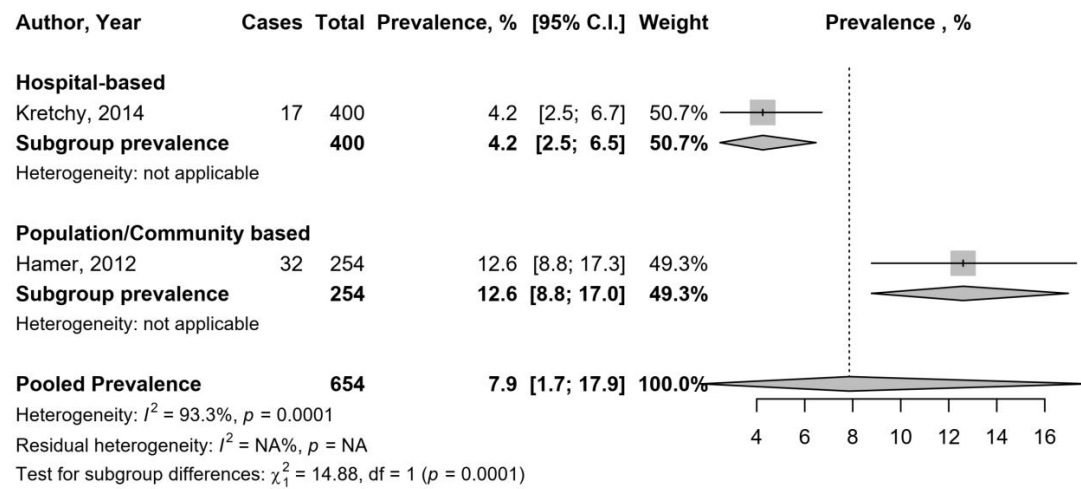
Supplementary Figure 2. Meta-analysis prevalence of depressive disorders by setting



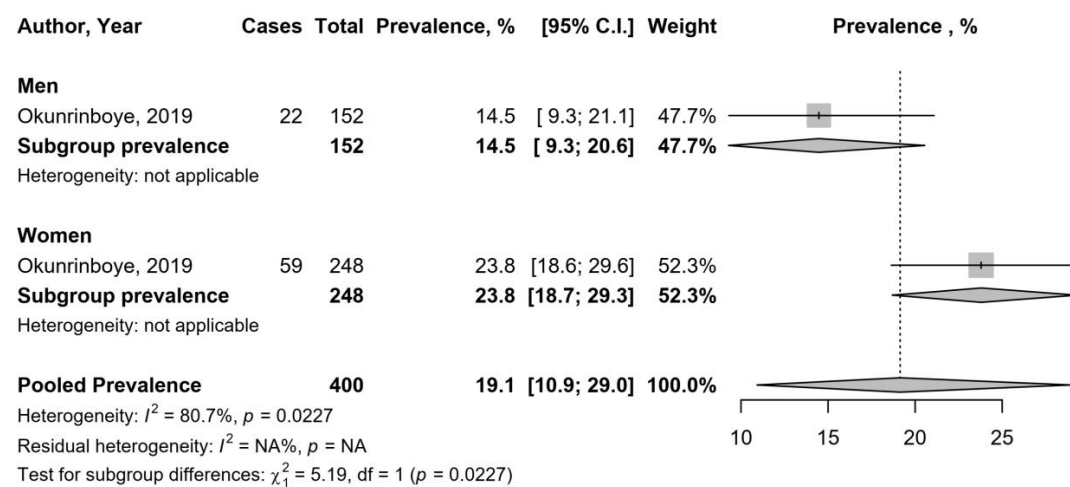
Supplementary Figure 3. Meta-analysis prevalence of depressive symptoms by setting



Supplementary Figure 4. Meta-analysis prevalence of major depressive disorders by setting



Supplementary Figure 5. Meta-analysis prevalence of depressive disorders by sex



Supplementary Figure 6. Meta-analysis prevalence of depressive symptoms by sex

