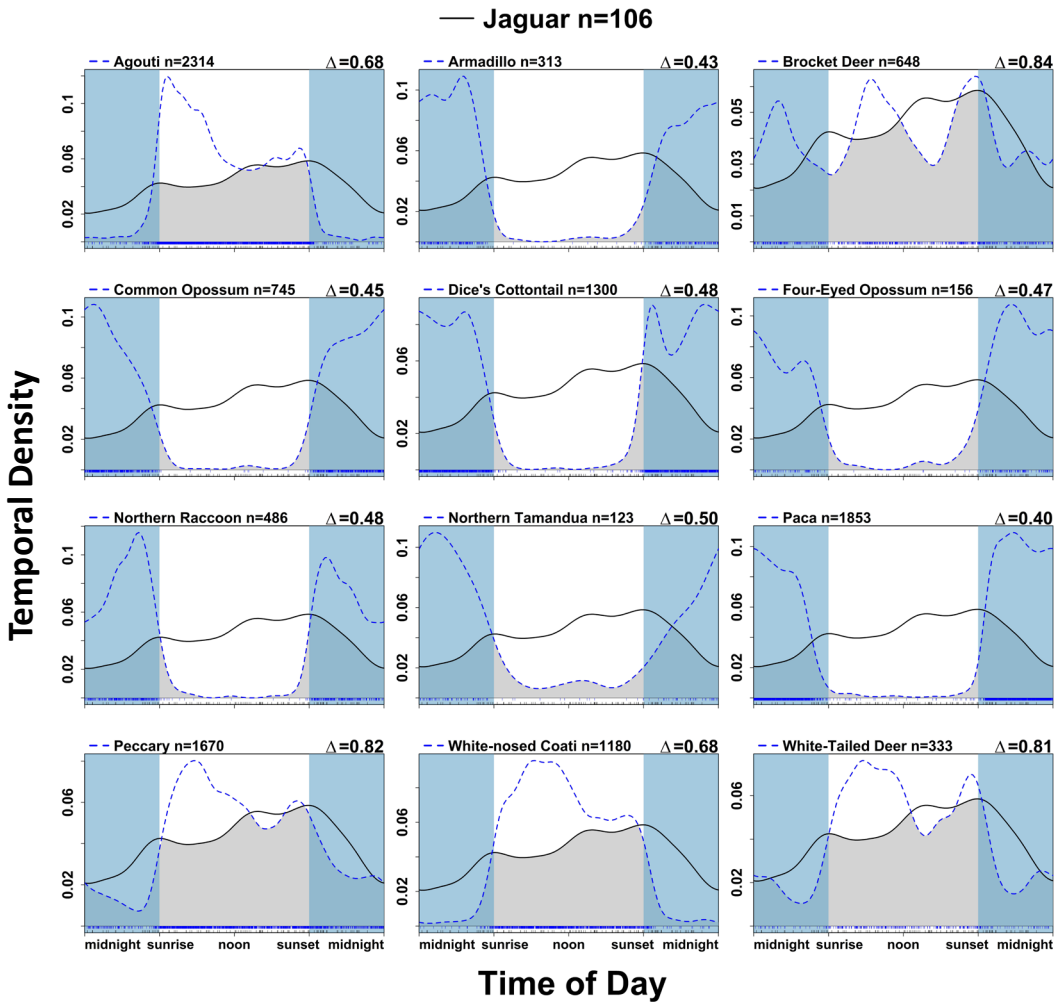
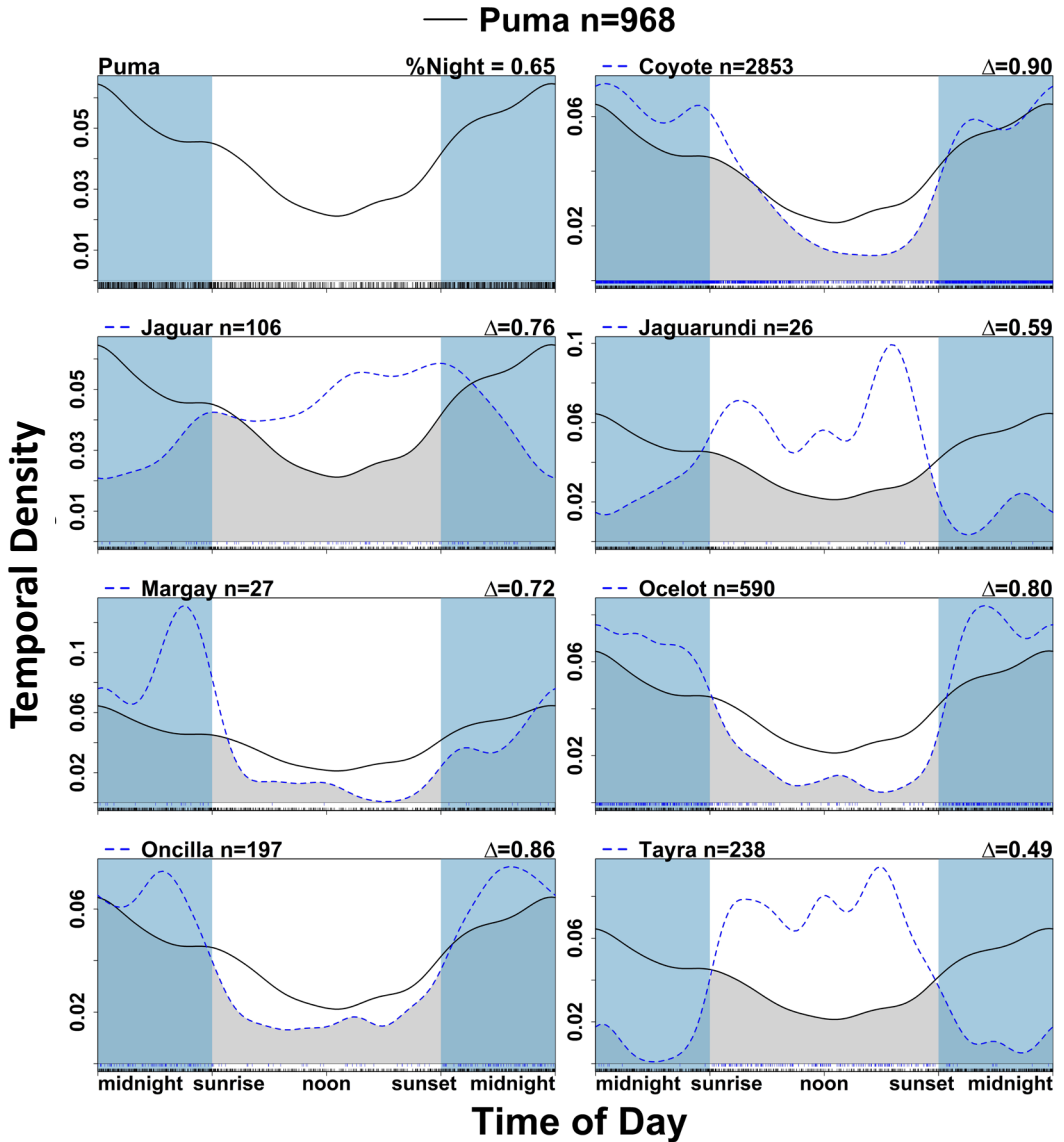


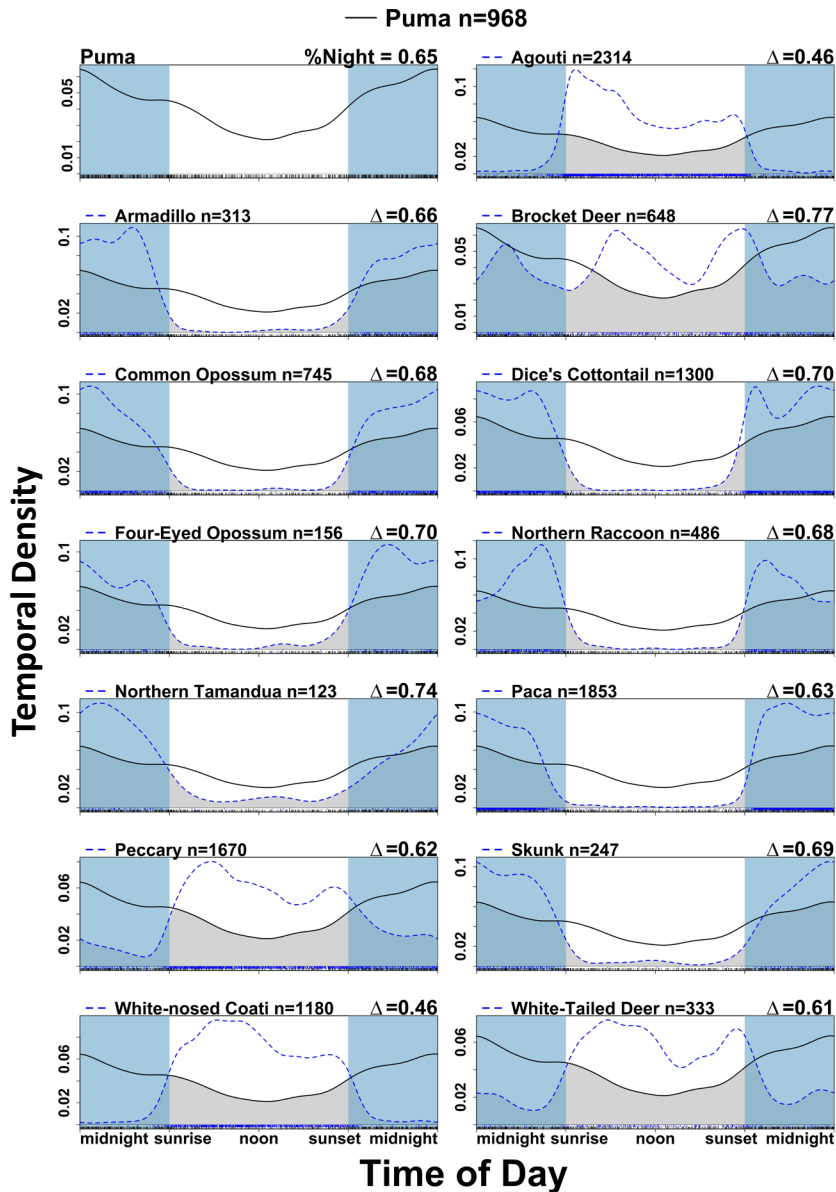
Supplementary Data SD8-1. Comparison of activity overlap plots between jaguar (*Panthera onca*) and intraguild competitors based on all survey sites 2010-2019. The top left frame shows jaguar activity pattern and percent time active at night (%Night). All other frames show the overlap between jaguar and the competitor species, with common name, number of independent records (n), and the coefficient of overlapping (Δ) indicated on the top of the frame.



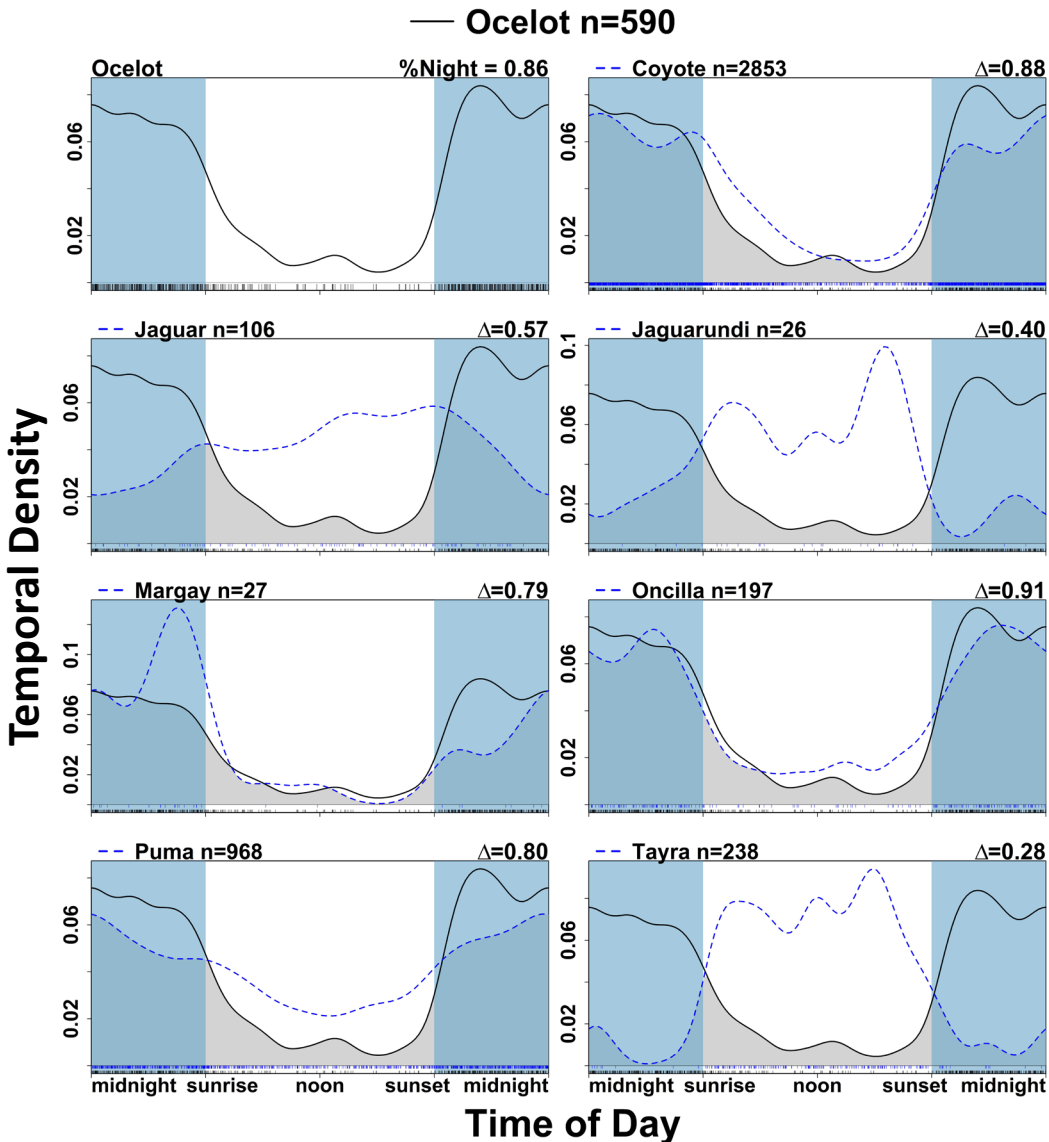
Supplementary Data SD8-2. Comparison of activity overlap plots between jaguar (*Panthera onca*) and prey species based on all survey sites 2010-2019. The overlap between jaguar and prey species are shown, with common name, number of independent records (n), and the coefficient of overlapping (Δ) indicated on the top of the frame.



Supplementary Data SD8-3. Comparison of activity overlap plots between puma (*Puma concolor*) and intraguild competitors based on all survey sites 2010-2019. The top left frame shows puma activity pattern and percent time active at night (%Night). All other frames show the overlap between puma and the competitor species, with common name, number of independent records (n), and the coefficient of overlapping (Δ) indicated on the top of the frame.

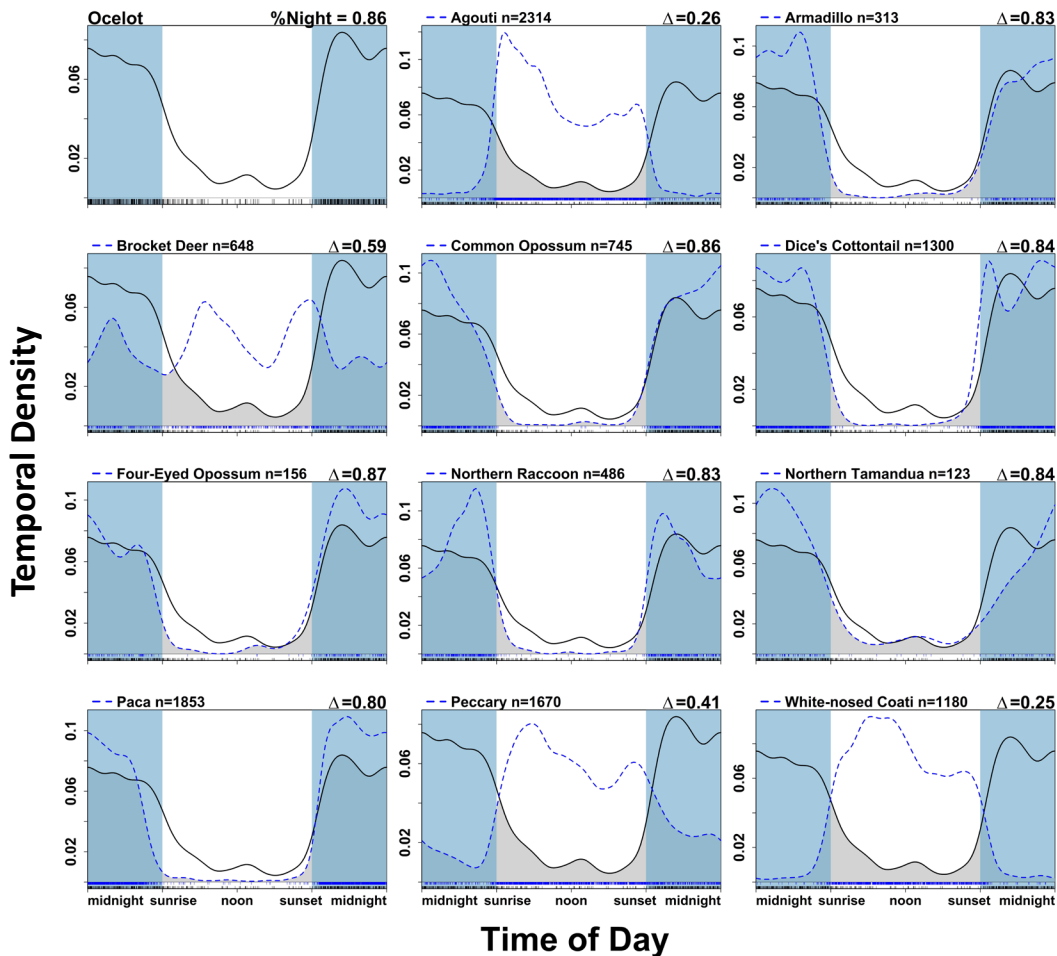


Supplementary Data SD8-4. Comparison of activity overlap plots between puma (*Puma concolor*) and prey species based on all survey sites 2010-2019. The top left frame shows puma activity pattern and percent time active at night (%Night). All other frames show the overlap between puma and prey species, with common name, number of independent records (*n*), and the coefficient of overlapping (Δ) indicated on the top of the frame.

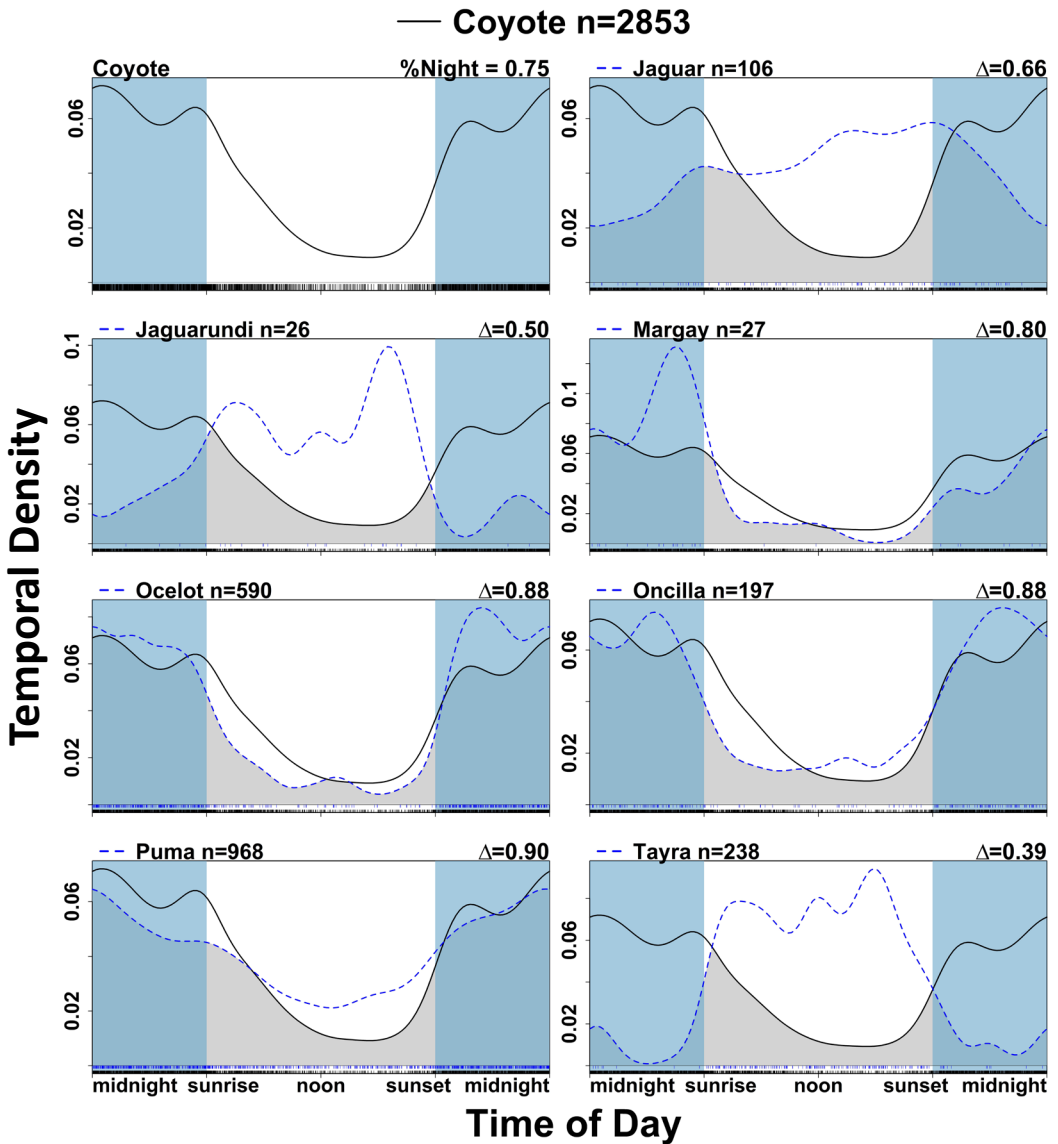


Supplementary Data SD8-5. Comparison of activity overlap plots between ocelot (*Leopardus pardalis*) and intraguild competitors based on all survey sites 2010-2019. The top left frame shows ocelot activity pattern and percent time active at night (%Night). All other frames show the overlap between ocelot and the competitor species, with common name, number of independent records (*n*), and the coefficient of overlapping (Δ) indicated on the top of the frame.

— Ocelot n=590

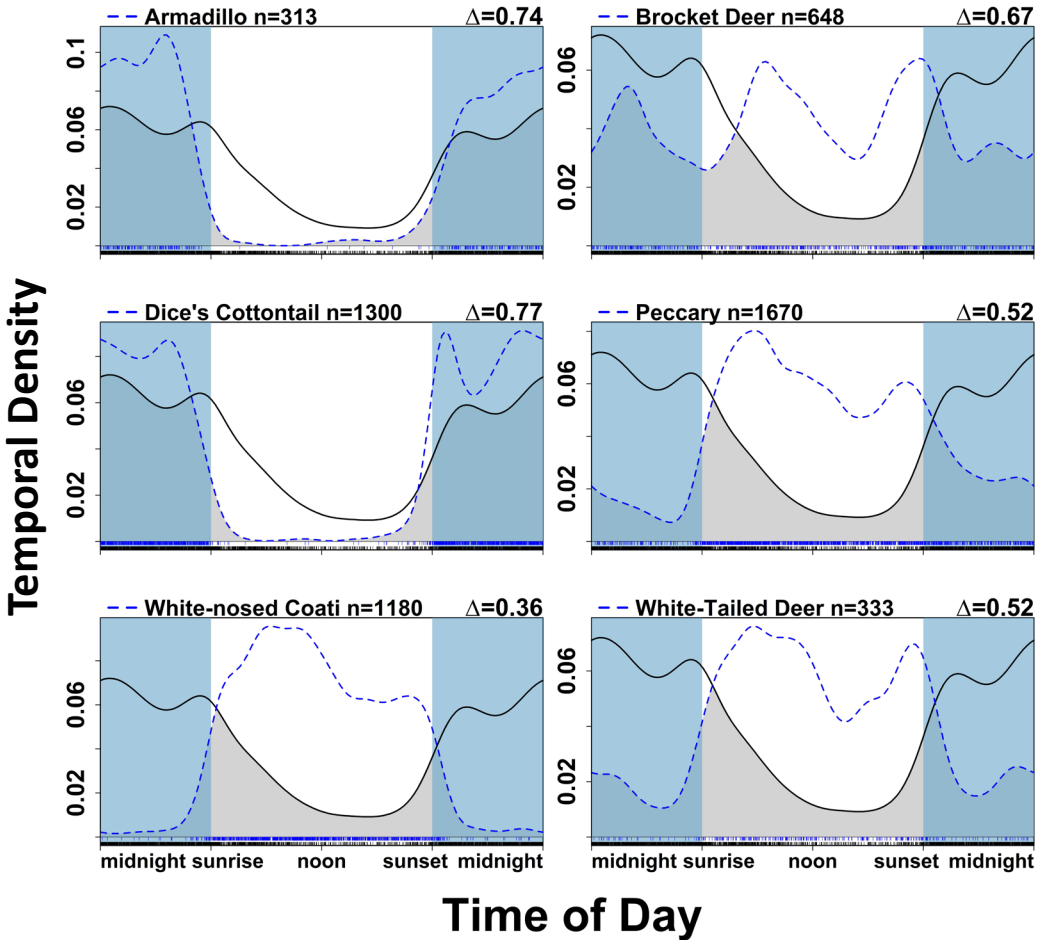


Supplementary Data SD8-6. Comparison of activity overlap plots between ocelot (*Leopardus pardalis*) and prey species based on all survey sites 2010-2019. The top left frame shows ocelot activity pattern and percent time active at night (%Night). All other frames show the overlap between ocelot and prey species, with common name, number of independent records (n), and the coefficient of overlapping (Δ) indicated on the top of the frame.

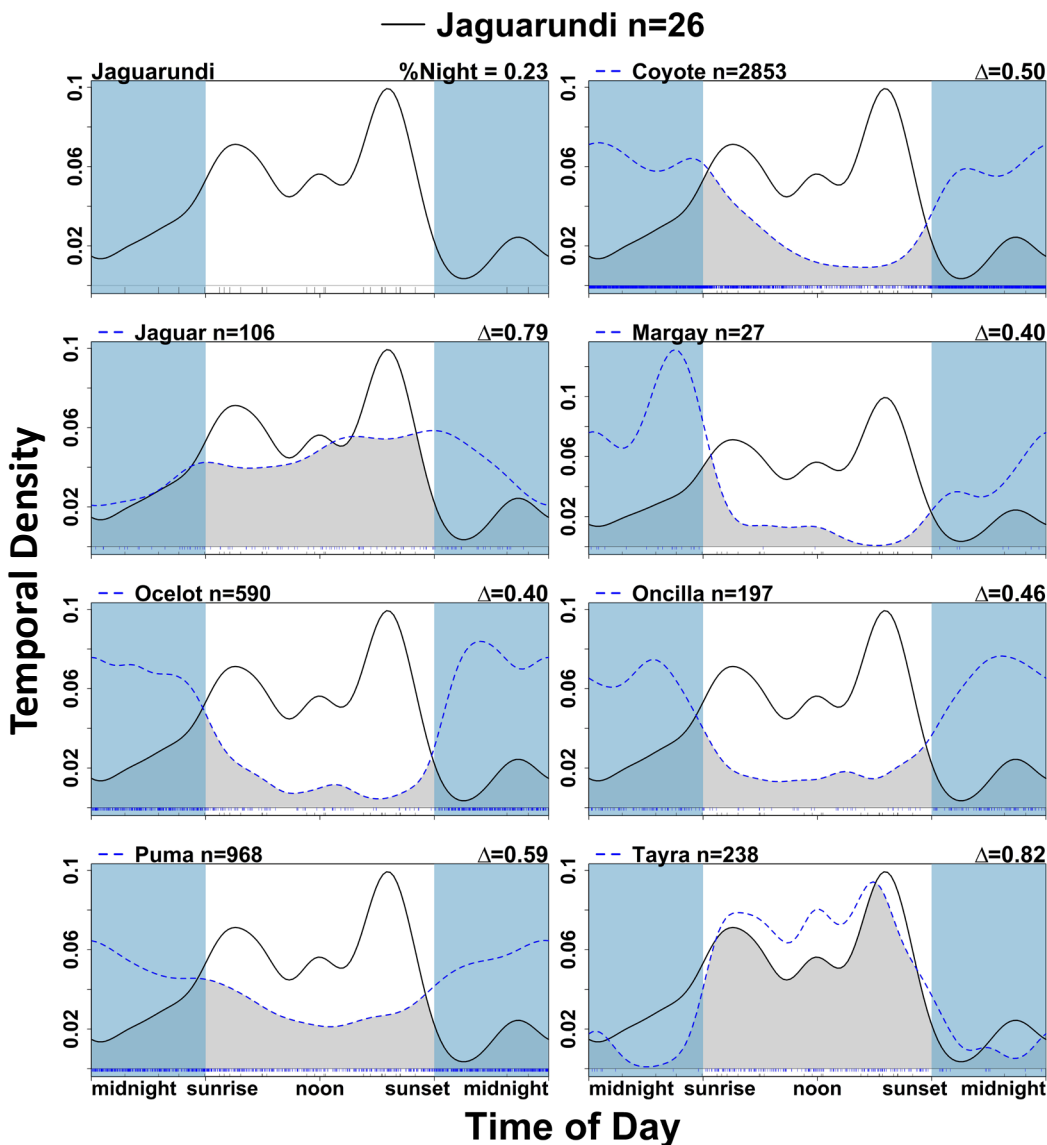


Supplementary Data SD8-7. Comparison of activity overlap plots between coyote (*Canis latrans*) and intraguild competitors based on all survey sites 2010-2019. The top left frame shows coyote activity pattern and percent time active at night (%Night). All other frames show the overlap between coyote and the competitor species, with common name, number of independent records (n), and the coefficient of overlapping (Δ) indicated on the top of the frame.

— Coyote n=2853

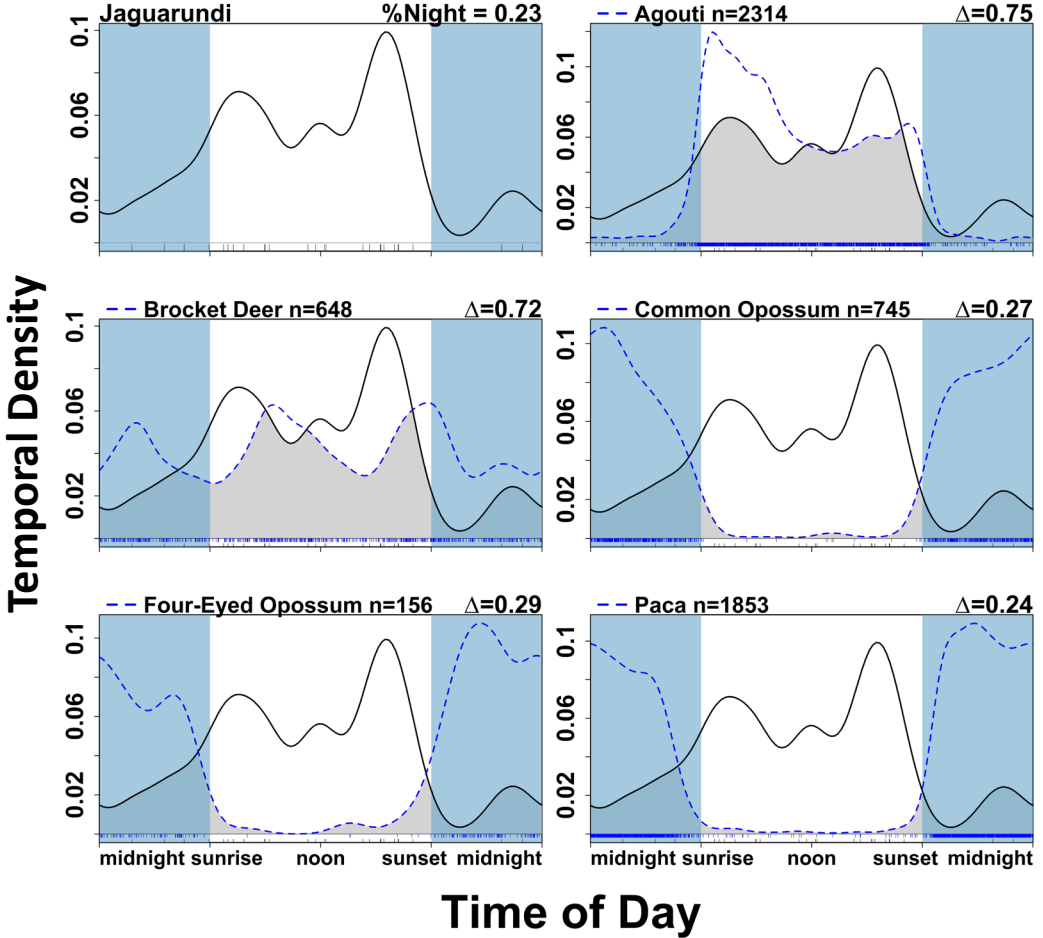


Supplementary Data SD8-8. Comparison of activity overlap plots between coyote (*Canis latrans*) and prey species based on all survey sites 2010-2019. The overlap between coyote and prey species are shown, with common name, number of independent records (*n*), and the coefficient of overlapping (Δ) indicated on the top of the frame.



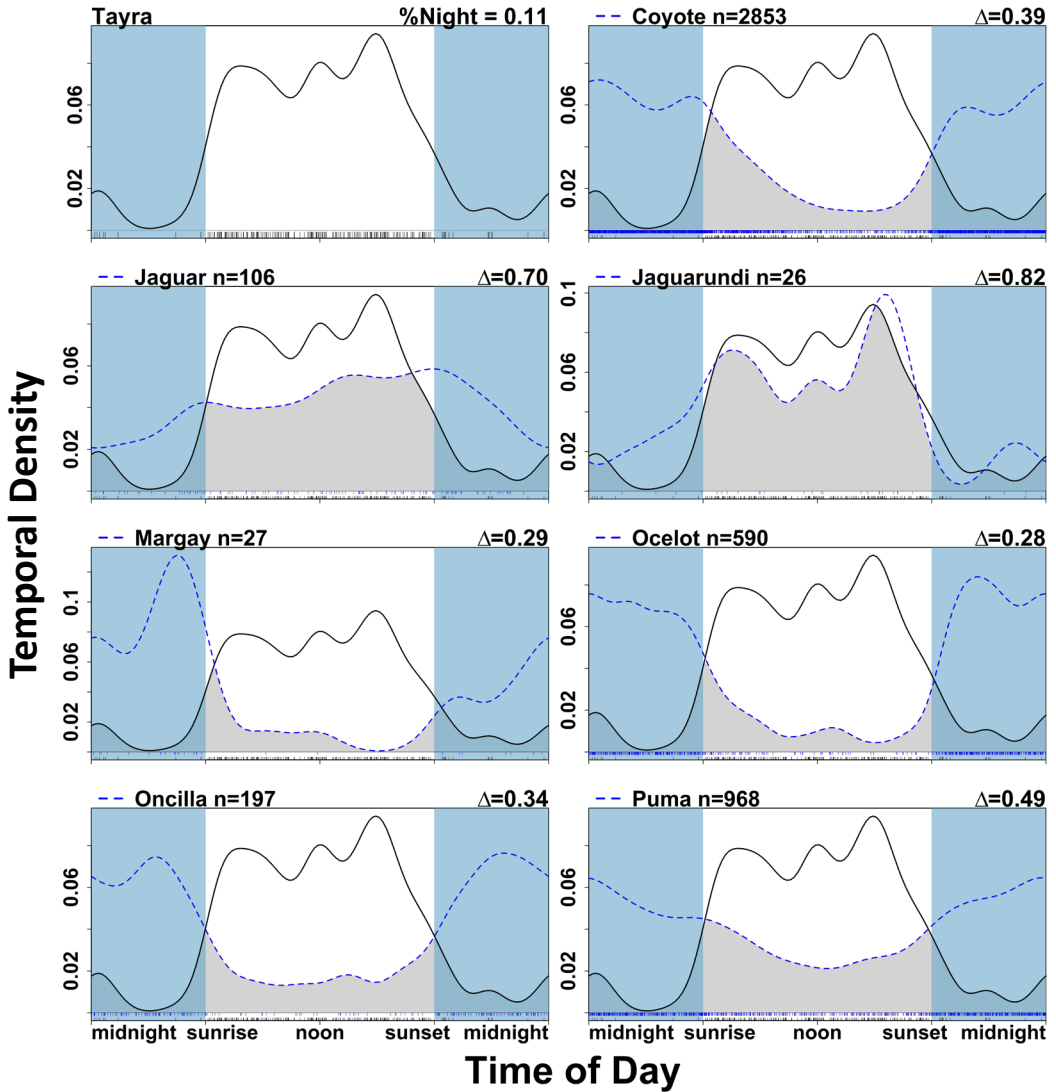
Supplementary Data SD8-9. Comparison of activity overlap plots between jaguarundi (*Herpailurus yaguarondi*) and intraguild competitors based on all survey sites 2010-2019. The top left frame shows jaguarundi activity pattern and percent time active at night (%Night). All other frames show the overlap between jaguarundi and the competitor species, with common name, number of independent records (*n*), and the coefficient of overlapping (Δ) indicated on the top of the frame.

— Jaguarundi n=26



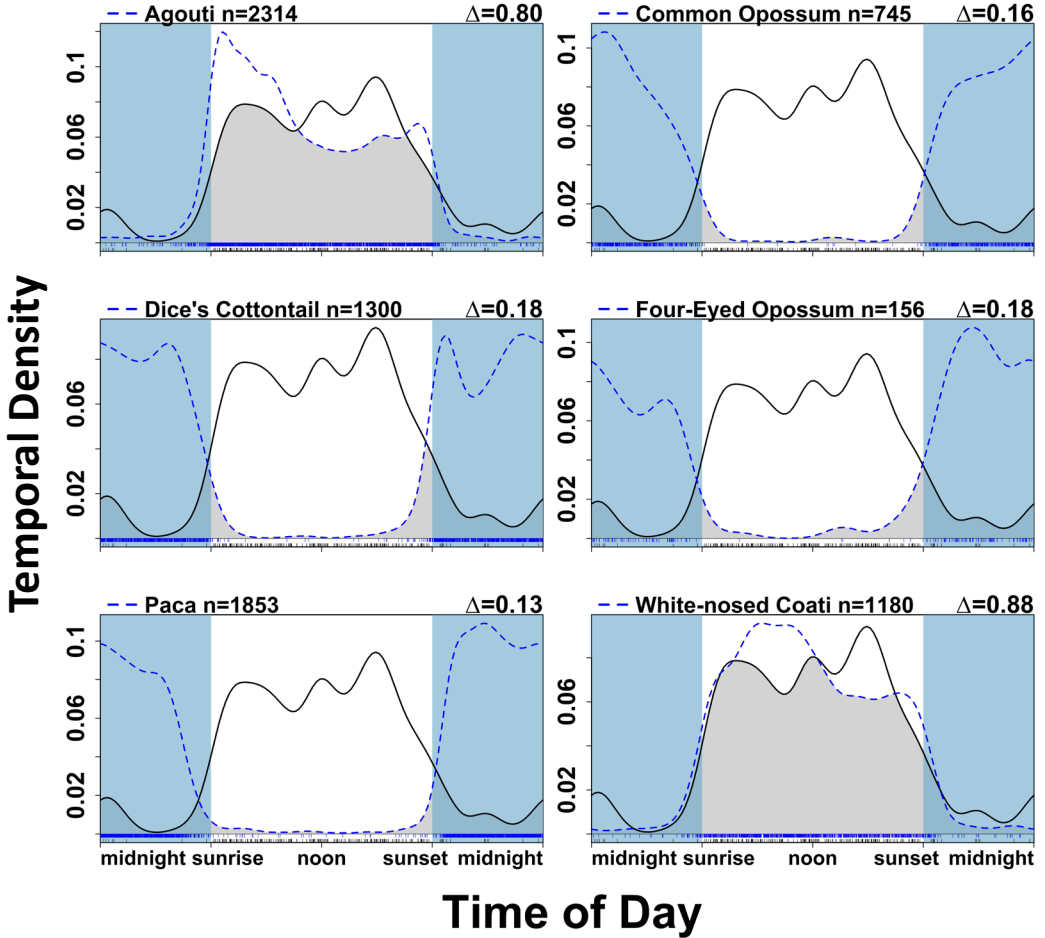
Supplementary Data SD8-10. Comparison of activity overlap plots between jaguarundi (*Herpailurus yagouaroundi*) and prey species based on all survey sites 2010-2019. The top left frame shows jaguarundi activity pattern and percent time active at night (%Night). All other frames show the overlap between jaguarundi and prey species, with common name, number of independent records (*n*), and the coefficient of overlapping (Δ) indicated on the top of the frame.

— Tayra n=238

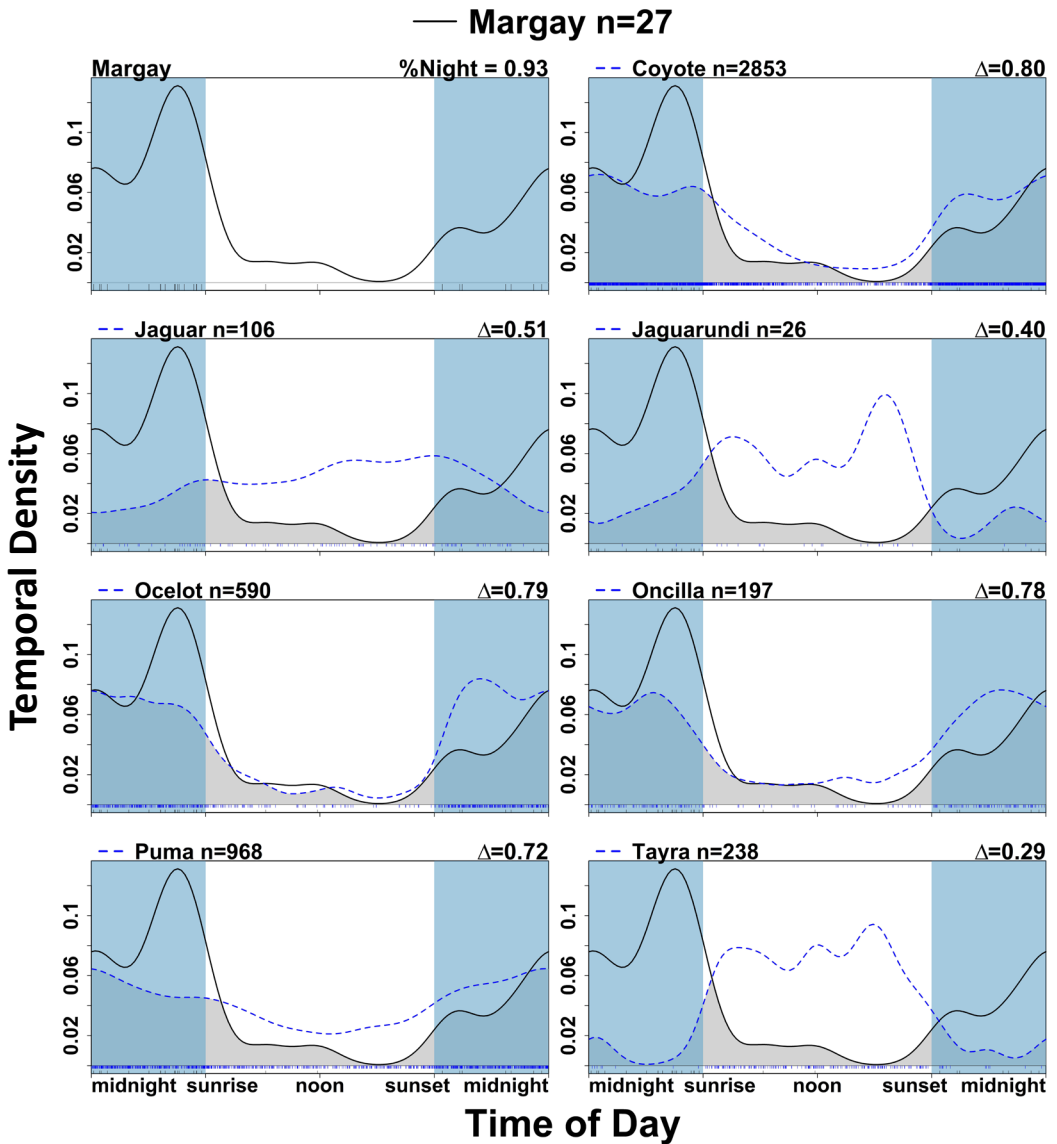


Supplementary Data SD8-11. Comparison of activity overlap plots between tayra (*Eira barbara*) and intraguild competitors based on all survey sites 2010-2019. The top left frame shows tayra activity pattern and percent time active at night (%Night). All other frames show the overlap between tayra and the competitor species, with common name, number of independent records (*n*), and the coefficient of overlapping (Δ) indicated on the top of the frame.

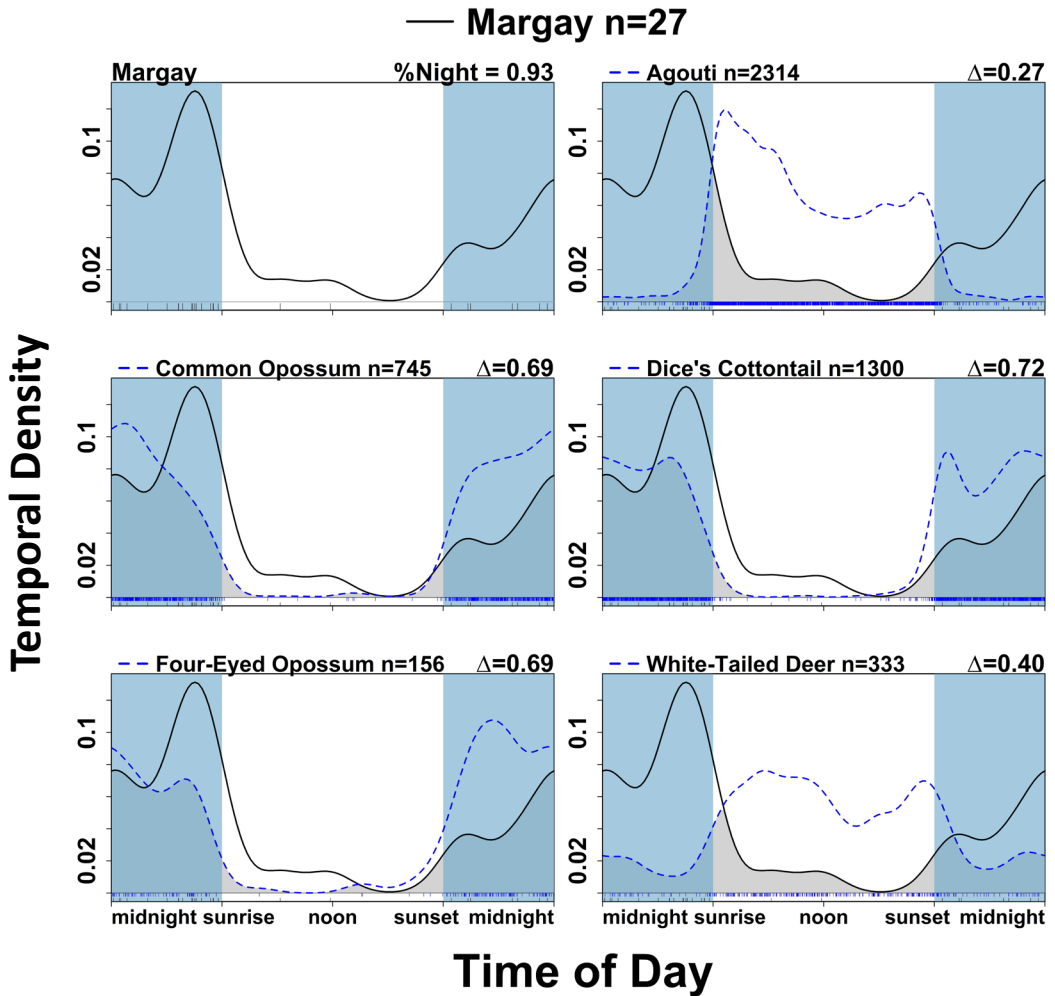
— Tayra n=238



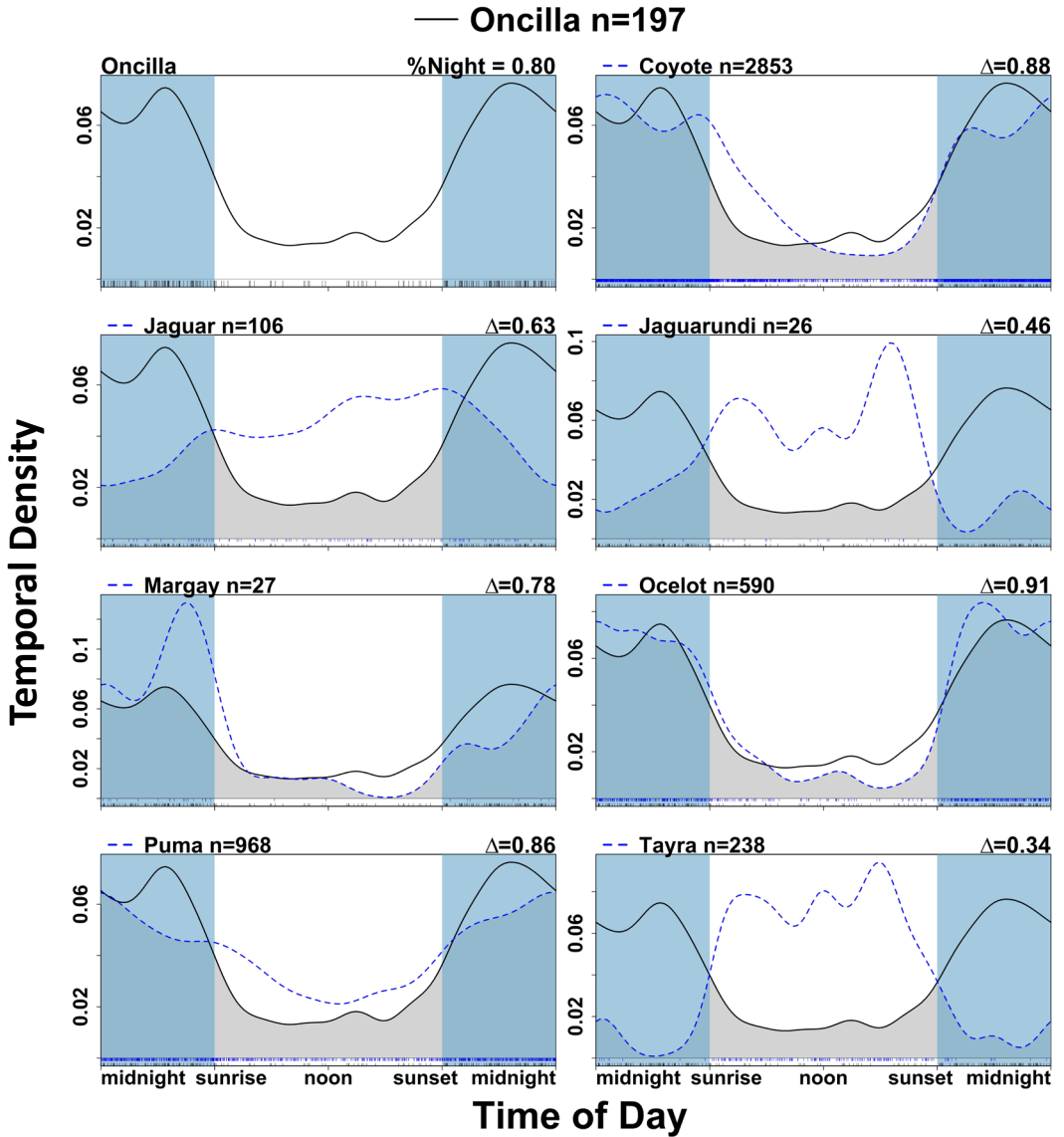
Supplementary Data SD8-12. Comparison of activity overlap plots between tayra (*Eira barbara*) and prey species based on all survey sites 2010-2019. The overlap between tayra and prey species are shown, with common name, number of independent records (*n*), and the coefficient of overlapping (Δ) indicated on the top of the frame.



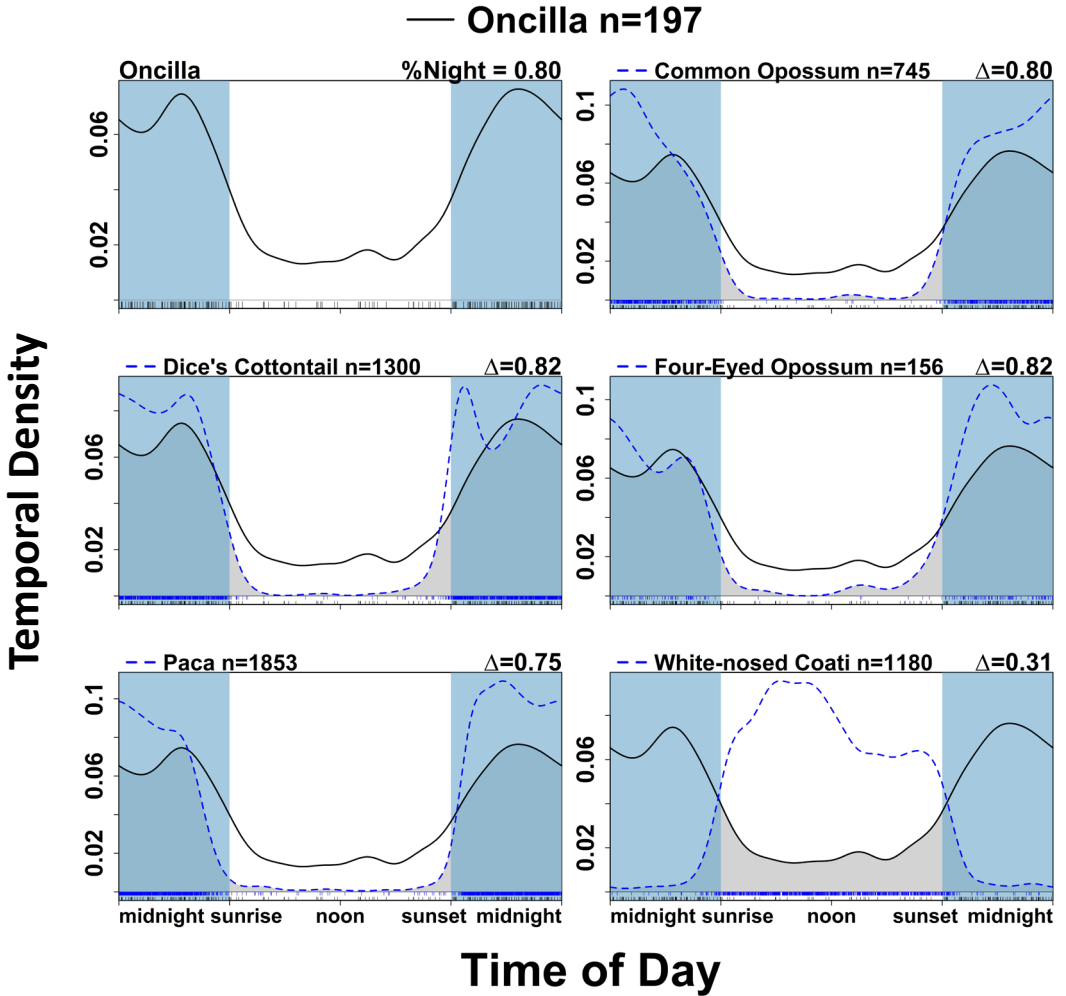
Supplementary Data SD8-13. Comparison of activity overlap plots between margay (*Leopardus wiedii*) and intraguild competitors based on all survey sites 2010-2019. The top left frame shows margay activity pattern and percent time active at night (%Night). All other frames show the overlap between margay and the competitor species, with common name, number of independent records (n), and the coefficient of overlapping (Δ) indicated on the top of the frame.



Supplementary Data SD8-14. Comparison of activity overlap plots between margay (*Leopardus wiedii*) and prey species based on all survey sites 2010-2019. The top left frame shows margay activity pattern and percent time active at night (%Night). All other frames show the overlap between margay and prey species, with common name, number of independent records (n), and the coefficient of overlapping (Δ) indicated on the top of the frame.



Supplementary Data SD8-15. Comparison of activity overlap plots between oncilla (*Leopardus tigrinus oncilla*) and intraguild competitors based on all survey sites 2010-2019. The top left frame shows oncilla activity pattern and percent time active at night (%Night). All other frames show the overlap between oncilla and the competitor species, with common name, number of independent records (n), and the coefficient of overlapping (Δ) indicated on the top of the frame.



Supplementary Data SD8-16. Comparison of activity overlap plots between oncilla (*Leopardus tigrinus oncilla*) and prey species based on all survey sites 2010-2019. The top left frame shows oncilla activity pattern and percent time active at night (%Night). All other frames show the overlap between oncilla and prey species, with common name, number of independent records (n), and the coefficient of overlapping (Δ) indicated on the top of the frame.