

Scavenger receptor MARCO contributes to cellular internalization of exosomes by dynamin-dependent endocytosis and macropinocytosis

Sanae Kanno^{a*}, Seishiro Hirano^b, Tsubasa Sakamoto^a, Akiko Furuyama^b, Hiroshi Takase^c, Hideaki Kato^a, Mamiko Fukuta^a, Yasuhiro Aoki^a

^a Department of Forensic Medicine, Nagoya City University Graduate School of Medical Sciences, 1 Kawasumi, Mizuho-cho, Mizuho-ku, Nagoya 467-8601, Japan

^b Center for Health and Environmental Risk Research, National Institute for Environmental Studies, 16-2 Onogawa, Tsukuba, Ibaraki 305-8506, Japan

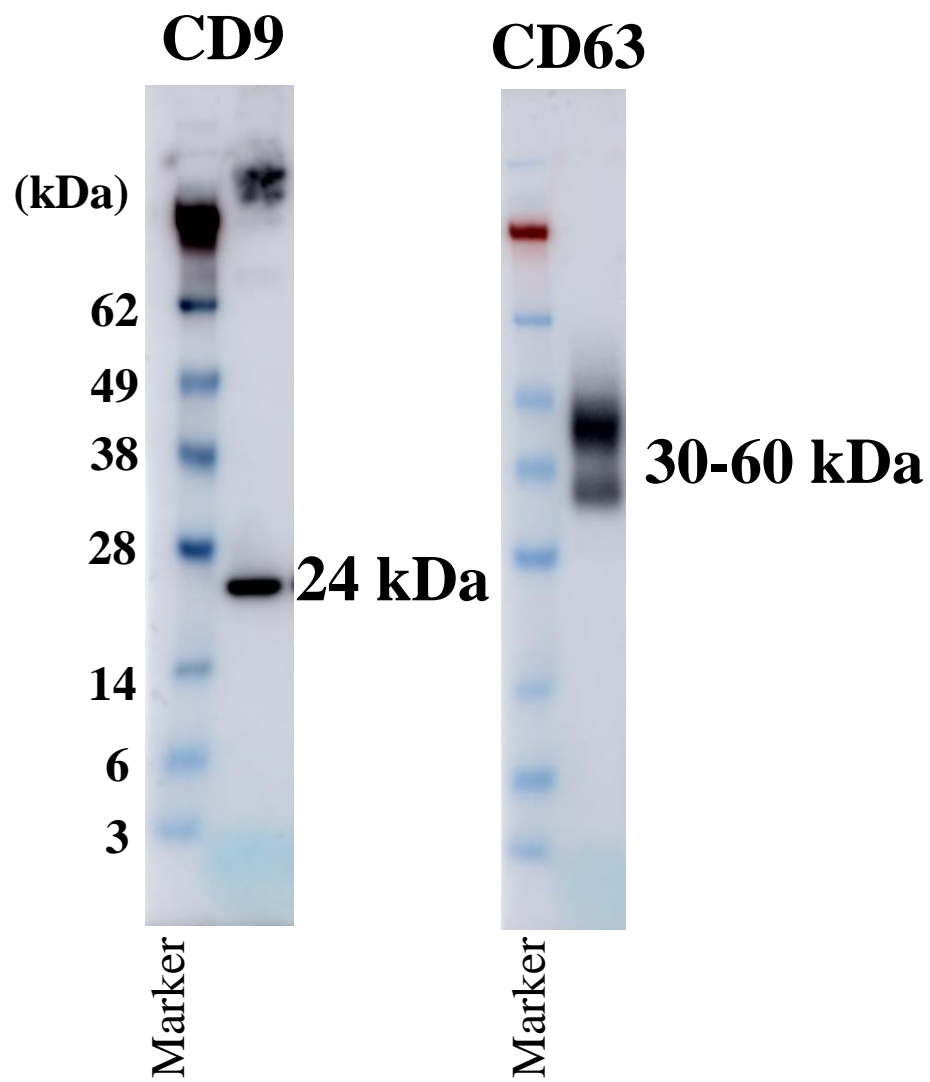
^c Core Laboratory, Nagoya City University Graduate School of Medical Sciences, 1 Kawasumi, Mizuho-cho, Mizuho-ku, Nagoya 467-8601, Japan

*Correspondence should be addressed to: Sanae Kanno, Ph.D.

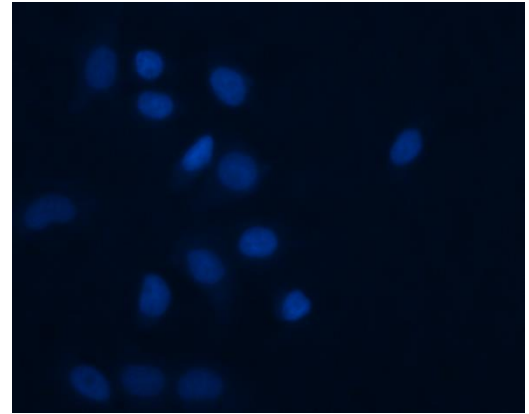
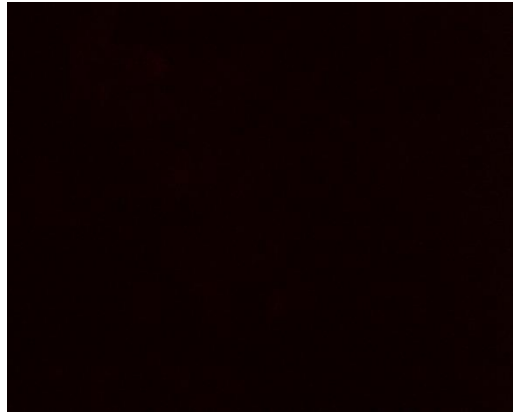
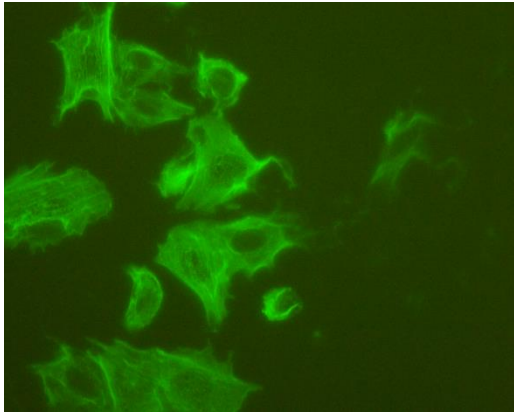
Department of Forensic Medicine, Graduate School of Medical Sciences, Nagoya City University, 1 Kawasumi, Mizuho-cho, Mizuho-ku, Nagoya 467-8601, Japan

Tel: +81-52-853-8180

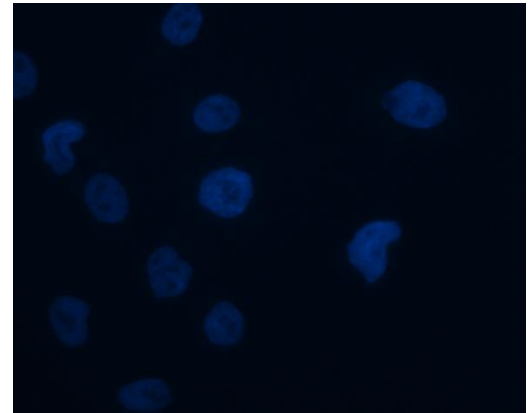
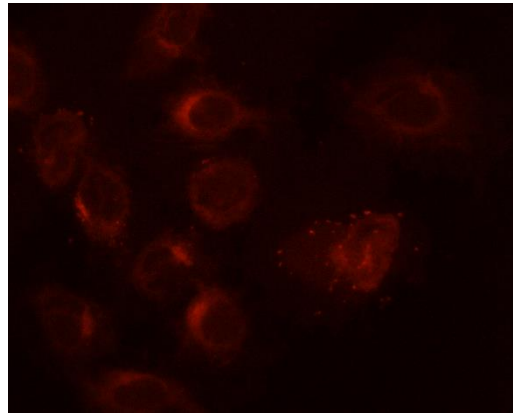
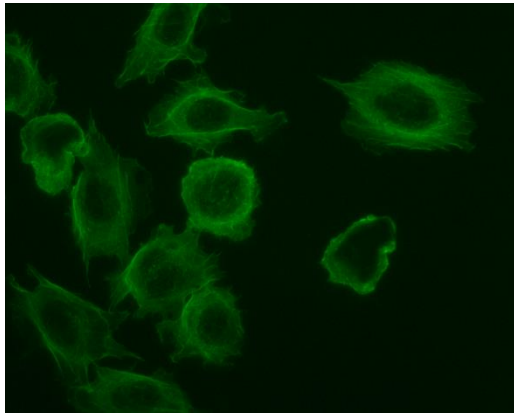
E-mail: sanae@med.nagoya-cu.ac.jp



CHO-CT



CHO-MARCO

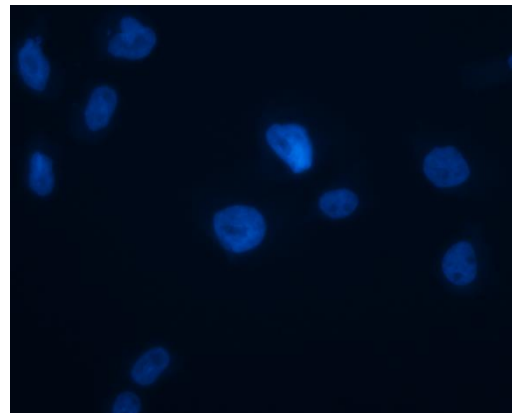
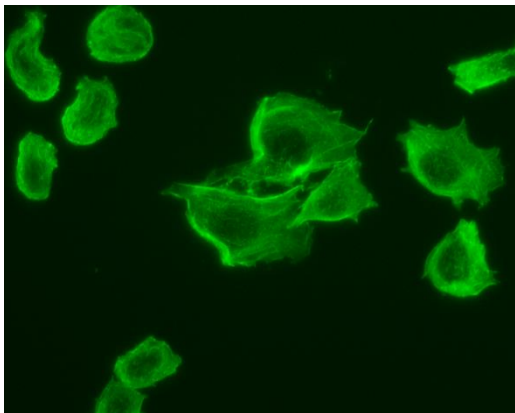


Phalloidin

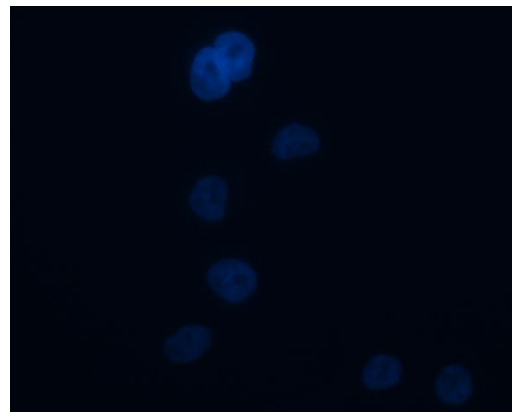
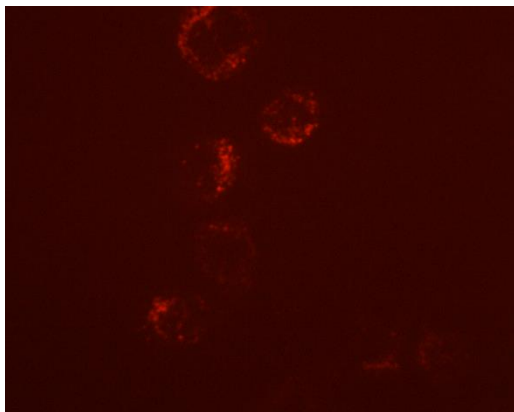
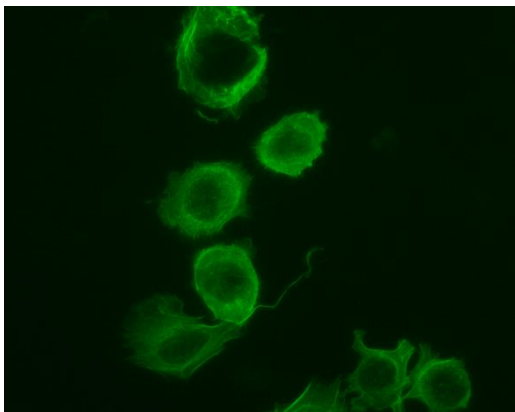
Exosome

DAPI

CHO-CT



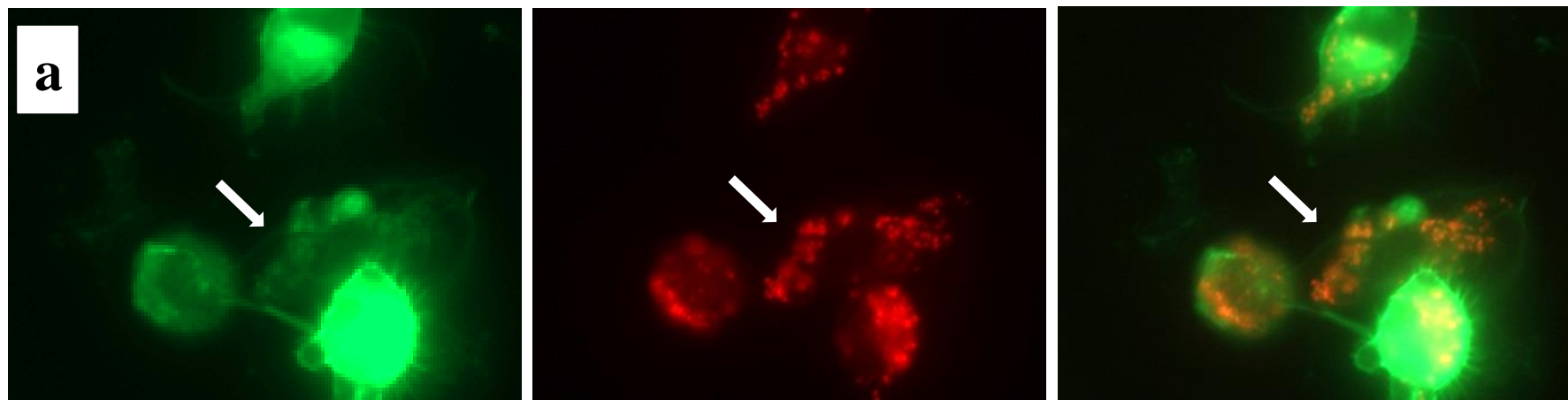
CHO-MARCO



Phalloidin

Fluorescent beads

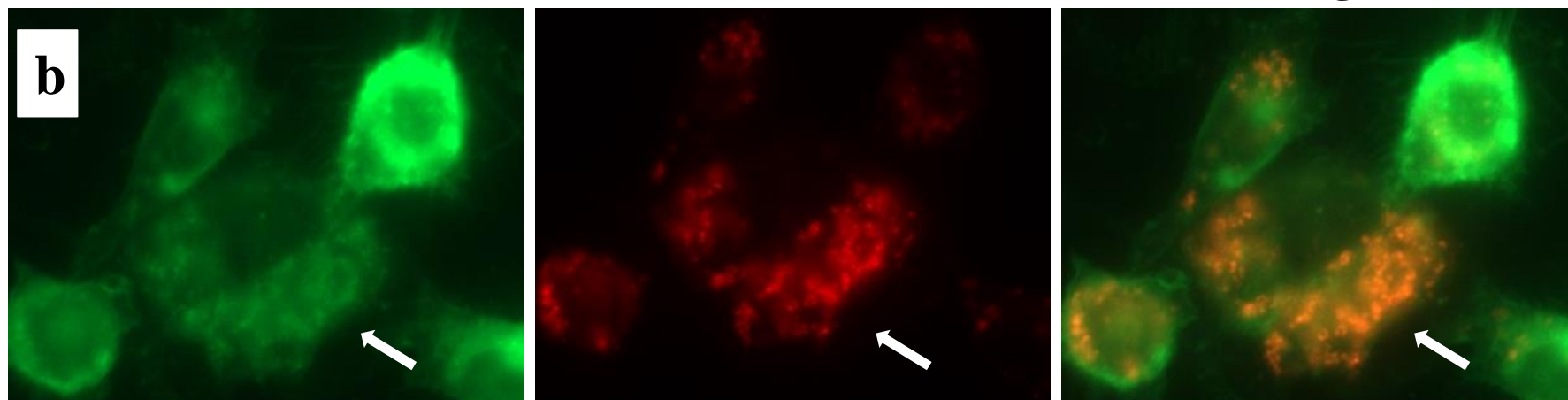
DAPI



GFP-MARCO

Exosomes

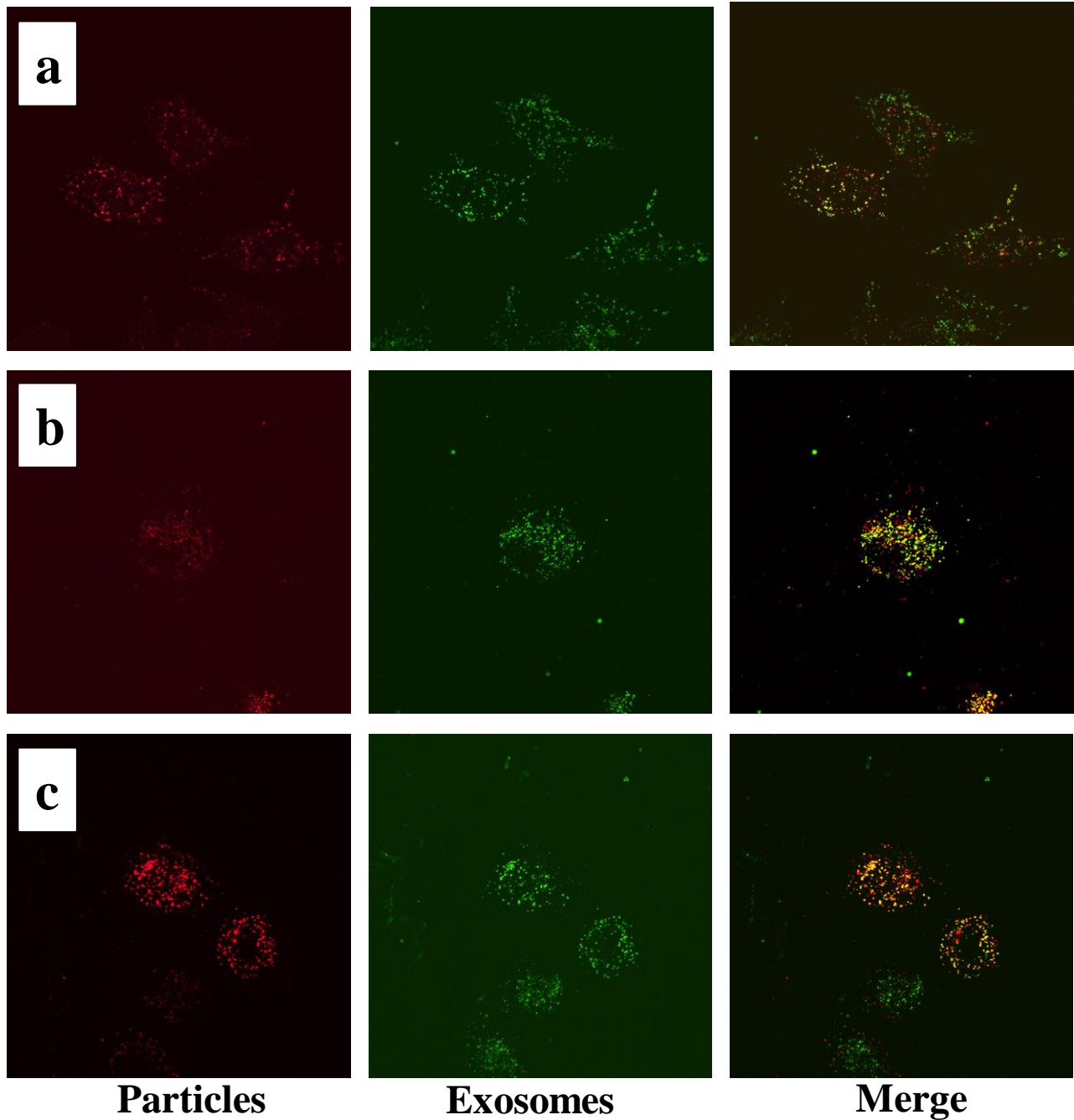
Merge



GFP-MARCO

20 nm-particles

Merge



Particles

Exosomes

Merge

Supplemental Fig. 4