

AJAE appendix for *Animal sourced foods and child stunting*

Authors: Derek Headey, International Food Policy Research Institute (IFPRI); Kalle Hirvonen, International Food Policy Research Institute (IFPRI); John Hoddinott, Cornell University

Date: May 22nd, 2018

Note: The material contained herein is supplementary to the article named in the title and published in the American Journal of Agricultural Economics (AJAE).

Table of contents:

Table S1. Observations by region and country

Figure S1. An LPOLY of stunting by child age for five major regions

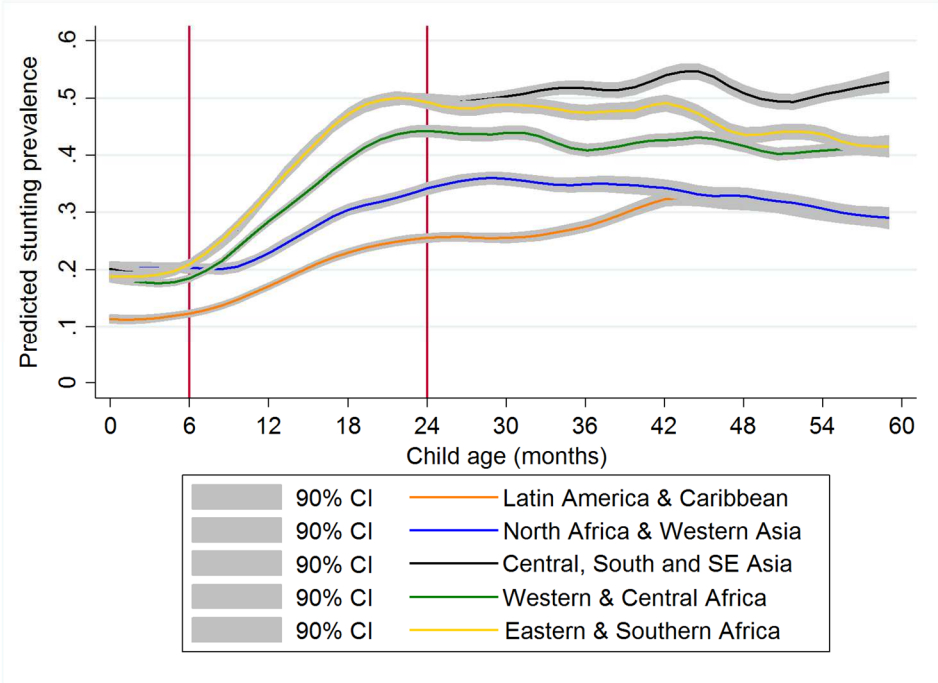
Table S2. Full regression results of Table 5

Table S3. ASFs are negatively associated with stunting when controlling for wealth terciles

Table S1. Observations by region and country

<u>Latin America & Caribbean</u>			<u>Western & Central Africa</u>		
Country	Freq.	Percent	Country	Freq.	Percent
Bolivia	2,397	8.16	Benin	3,017	8.05
Colombia	4,522	15.39	Burkina Faso	2,054	5.48
Republic	1,017	3.46	Cameroon	1,753	4.68
Guyana	499	1.7	Congo (Brazzaville)	1,438	3.84
Haiti	2,139	7.28	Congo Democratic		
Honduras	6,007	20.44	Republic	2,468	6.59
Peru	12,806	43.58	Cote d'Ivoire	1,014	2.71
Total	29,387	100	Gabon	1,128	3.01
			Ghana	791	2.11
			Guinea	1,003	2.68
			Liberia	2,445	6.52
			Mali	1,315	3.51
			Niger	1,387	3.7
			Nigeria	14,022	37.42
			Sao Tome and Principe	492	1.31
			Senegal	1,157	3.09
			Sierra Leone	1,990	5.31
			Total	37,474	100
<u>Middle East & North Africa</u>			<u>Eastern & Southern Africa</u>		
Country	Freq.	Percent	Country	Freq.	Percent
Azerbaijan	581	4.02	Burundi	1,052	4.31
Egypt	7,858	54.4	Comoros	736	3.02
Jordan	1,882	13.03	Ethiopia	2,698	11.06
Yemen	4,124	28.55	Lesotho	534	2.19
Total	14,445	100	Madagascar	1,500	6.15
			Malawi	1,479	6.06
			Mozambique	3,134	12.84
			Namibia	1,926	7.89
			Rwanda	1,137	4.66
			Swaziland	718	2.94
			Uganda	1,481	6.07
			Zambia	5,206	21.33
			Zimbabwe	2,804	11.49
			Total	24,405	100
<u>South, Central and South-East Asia</u>					
Country	Freq.	Percent			
Bangladesh	2,256	9.13			
Cambodia	1,136	4.6			
India	12,629	51.09			
Kyrgyz Republic	1,336	5.4			
Maldives	735	2.97			
Nepal	2,208	8.93			
Pakistan	882	3.57			
Tajikistan	1,471	5.95			
Timor-Leste	2,068	8.37			
Total	24,721	100			

Figure S1. An LPOLY of stunting by child age for five major regions



Notes: These are local polynomial plots of stunting against child age, with 90% confidence intervals, for 296,370 children aged 0-59 months.

Table S2. Full results for Table 5

	(1) 6-23 months	(2) 6-11 months	(3) 12-17 months	(4) 18-23 months
Any ASF	-0.023*** (0.003)	-0.016*** (0.005)	-0.011** (0.006)	-0.040*** (0.006)
Grains/roots/tubers	-0.015*** (0.004)	-0.023*** (0.006)	-0.001 (0.008)	-0.013 (0.009)
Legumes/nuts	-0.006** (0.003)	-0.007 (0.005)	-0.006 (0.005)	-0.003 (0.006)
Any fruit	-0.019*** (0.003)	-0.015*** (0.005)	-0.014*** (0.005)	-0.018*** (0.005)
Any vegetables	0.003 (0.003)	-0.006 (0.005)	-0.001 (0.005)	0.004 (0.005)
Fortified infant cereal	0.002 (0.004)	0.009 (0.006)	-0.000 (0.007)	-0.011 (0.009)
Currently breastfed	0.021*** (0.003)	-0.028*** (0.007)	0.004 (0.006)	0.036*** (0.005)
Infant formula	-0.000 (0.004)	0.011* (0.006)	-0.017** (0.008)	-0.022** (0.009)
No solid foods	-0.010* (0.006)	0.005 (0.007)	0.001 (0.011)	-0.015 (0.013)
Diarrhea	0.009*** (0.003)	0.001 (0.005)	0.011** (0.005)	0.018*** (0.006)
Medical facility birth	-0.048*** (0.003)	-0.040*** (0.005)	-0.050*** (0.006)	-0.057*** (0.006)
Teenage mother	0.006** (0.003)	0.005 (0.005)	-0.000 (0.005)	0.018*** (0.006)
Women's height (cm)	-0.010*** (0.000)	-0.008*** (0.000)	-0.010*** (0.000)	-0.013*** (0.000)
Improved latrine	-0.069*** (0.005)	-0.052*** (0.007)	-0.076*** (0.008)	-0.083*** (0.009)
Unimproved latrine	-0.027*** (0.004)	-0.025*** (0.006)	-0.035*** (0.007)	-0.023*** (0.007)
Improved water	-0.002 (0.003)	-0.003 (0.005)	0.000 (0.006)	-0.000 (0.006)
Woman 9+ yrs education	-0.045*** (0.003)	-0.033*** (0.005)	-0.044*** (0.006)	-0.058*** (0.007)
Partner 9+ yrs education	-0.029*** (0.003)	-0.016*** (0.005)	-0.023*** (0.006)	-0.046*** (0.006)
Partner absent	-0.011** (0.005)	-0.004 (0.008)	-0.017* (0.009)	-0.017 (0.011)
Boy	0.063*** (0.002)	0.053*** (0.004)	0.075*** (0.004)	0.061*** (0.005)
Rural	0.018*** (0.004)	0.018*** (0.005)	0.013** (0.006)	0.025*** (0.007)
Survey dummies?	Yes	Yes	Yes	Yes
Sub-national fixed effects?	Yes	Yes	Yes	Yes
R-squared	0.149	0.104	0.141	0.167
Observations	130,315	45,316	45,026	39,973

Notes: See Table 5 in the main text. Wealth variable constructed using household responses to assets and aggregated into an index using a principal components analysis.

Table S3. ASFs are negatively associated with stunting when controlling for wealth terciles

	(1) 6-23 months	(2) 6-11 months	(3) 12-17 months	(4) 18-23 months
Any ASF	-0.022*** (0.003)	-0.015*** (0.005)	-0.009* (0.006)	-0.038*** (0.006)
Grains/roots/tubers	-0.015*** (0.004)	-0.023*** (0.006)	-0.001 (0.008)	-0.012 (0.009)
Legumes/nuts	-0.006** (0.003)	-0.007 (0.005)	-0.006 (0.005)	-0.002 (0.006)
Any fruit	-0.018*** (0.003)	-0.014*** (0.005)	-0.013*** (0.005)	-0.017*** (0.005)
Any vegetables	0.003 (0.003)	-0.005 (0.005)	-0.001 (0.005)	0.005 (0.005)
Wealth, lower tercile	reference	reference	reference	reference
Wealth, middle tercile	-0.024*** (0.004)	-0.019*** (0.006)	-0.022*** (0.007)	-0.027*** (0.007)
Wealth, upper tercile	-0.061*** (0.005)	-0.046*** (0.008)	-0.060*** (0.009)	-0.074*** (0.010)
Coefficient on ASF significantly smaller than other food coefficients?	Yes (except fruit)	No	No	Yes
Observations	130,315	45,316	45,026	39,973
R-squared	0.149	0.104	0.141	0.167

Note: See Table 5 in the main text. Wealth variable constructed using household responses to assets and aggregated into an index using a principal components analysis.