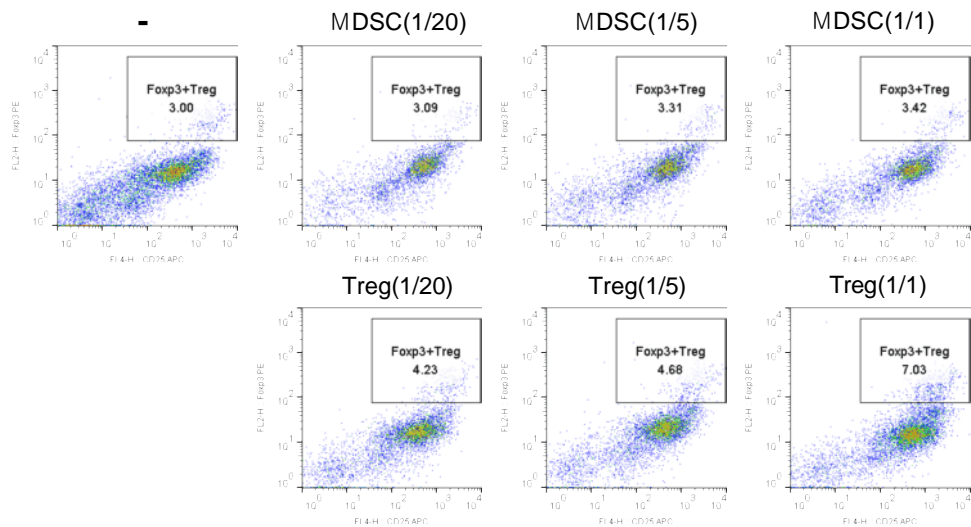
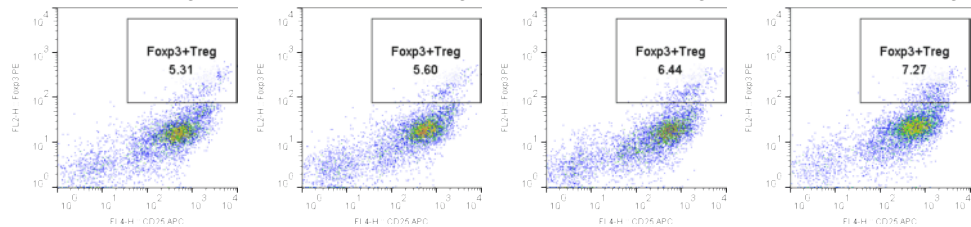
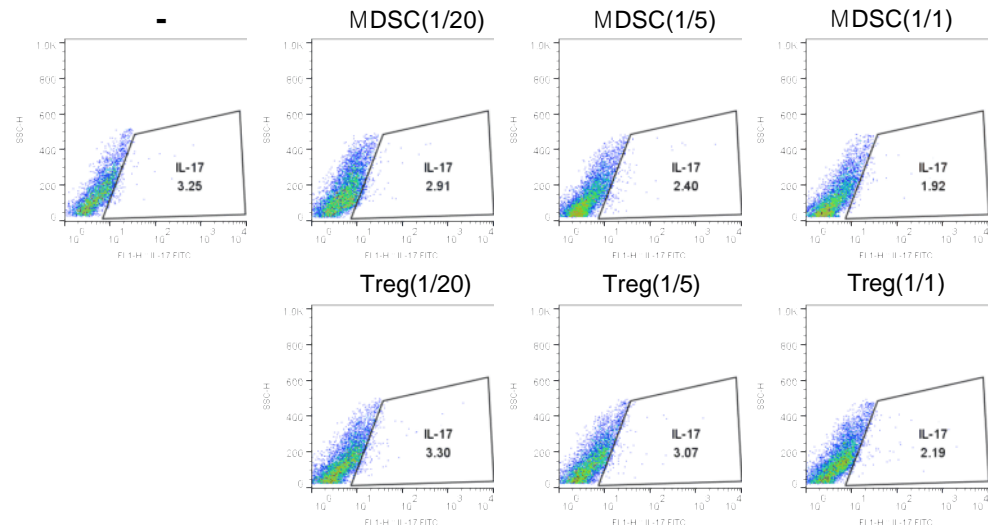


a α CD3+ α CD28

MDSC(1/20)+Treg(1/20) MDSC(1/20)+Treg(1/5) MDSC(1/5)+Treg(1/20) MDSC(1/5)+Treg(1/5)

**b** α CD3+ α CD28

MDSC(1/20)+Treg(1/20) MDSC(1/20)+Treg(1/5) MDSC(1/5)+Treg(1/20) MDSC(1/5)+Treg(1/5)

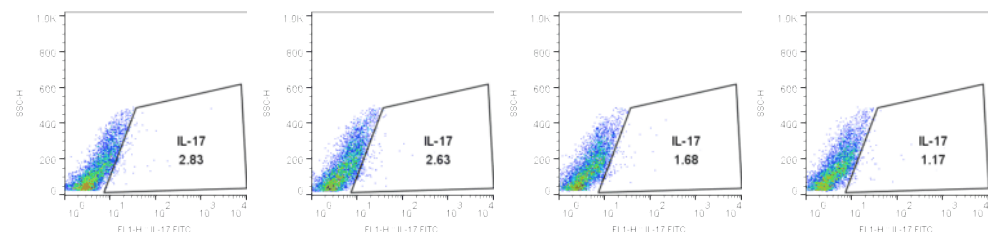


Figure S1. in vitro does test of combined cell-therapy with MDSC and Treg on Treg/Th17 regulation

CD4+T cell(1×10^6) isolated from normal C57BL/6 mice were cocultured with MDSC or Treg alone or combined MDSC and Treg cells for 3 days in the presence of anti-mouse CD3 and CD28 antibody and analyzed by flow cytometry. A plot from one representative experiment displays the proportions of IL-17+, CD25+Foxp3+ cells among CD4+ T cells. Numbers in the plots indicate percentages of gated cells.